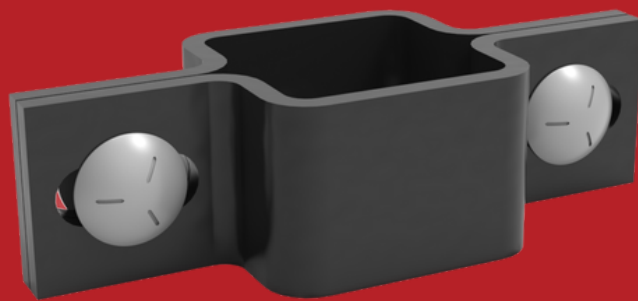


INTRODUCING THE FORDLOGAN
COLONEL CLAMP

Simplified Connection. Faster Installation.

WHAT IT IS

- Two c-shaped clamps
- Two ¼" x 1¼" carriage bolts
- Two ¼" flanged hex nuts



No more weaving bolts through wire mesh and frames!

WHAT IT DOES

Quickly secures two FordLogan Wire Mesh panels together from top to bottom.

HOW TO INSTALL

- 1 After two wire mesh panels are secured in base shoe, place one clamp on the outside of the panel and the other on the inside of the panel.



- 2 Insert the carriage bolts through the Colonel Clamp holes and fasten each bolt with the ¼" flanged hex nuts on the secured side of the wire cage.



WHAT IS ITS SIGNIFICANCE

A simple solution to save your installers time and to save you money!

FORDLOGAN

