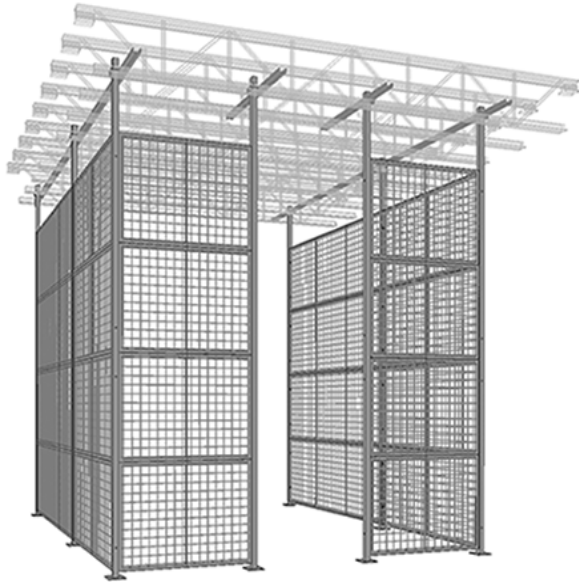




ORIGINAL (STRUCTURAL ANGLE) WIRE MESH PARTITION



POSTS - TOP FIX

Description

This partition system features floor-to-ceiling posts up to 48' high. Standard post spacing is 2' to 10' center-to-center. Custom post spacing is also available. Ideal for maximizing storage or workspace as the partition utilizes the full height of your facility. Panels are made of 2" x 2" x 10 GA welded wire mesh framed in 1 1/4" x 1 1/4" x 12GA structural angle with one or two welded \varnothing 1/2" \varnothing reinforcement rods.

PRODUCT INFORMATION

This partition system features floor-to-ceiling posts up to 48' high. Standard post spacing is 2' to 10' center-to-center. Custom post spacing is also available. Ideal for maximizing storage or workspace as the partition utilizes the full height of your facility.

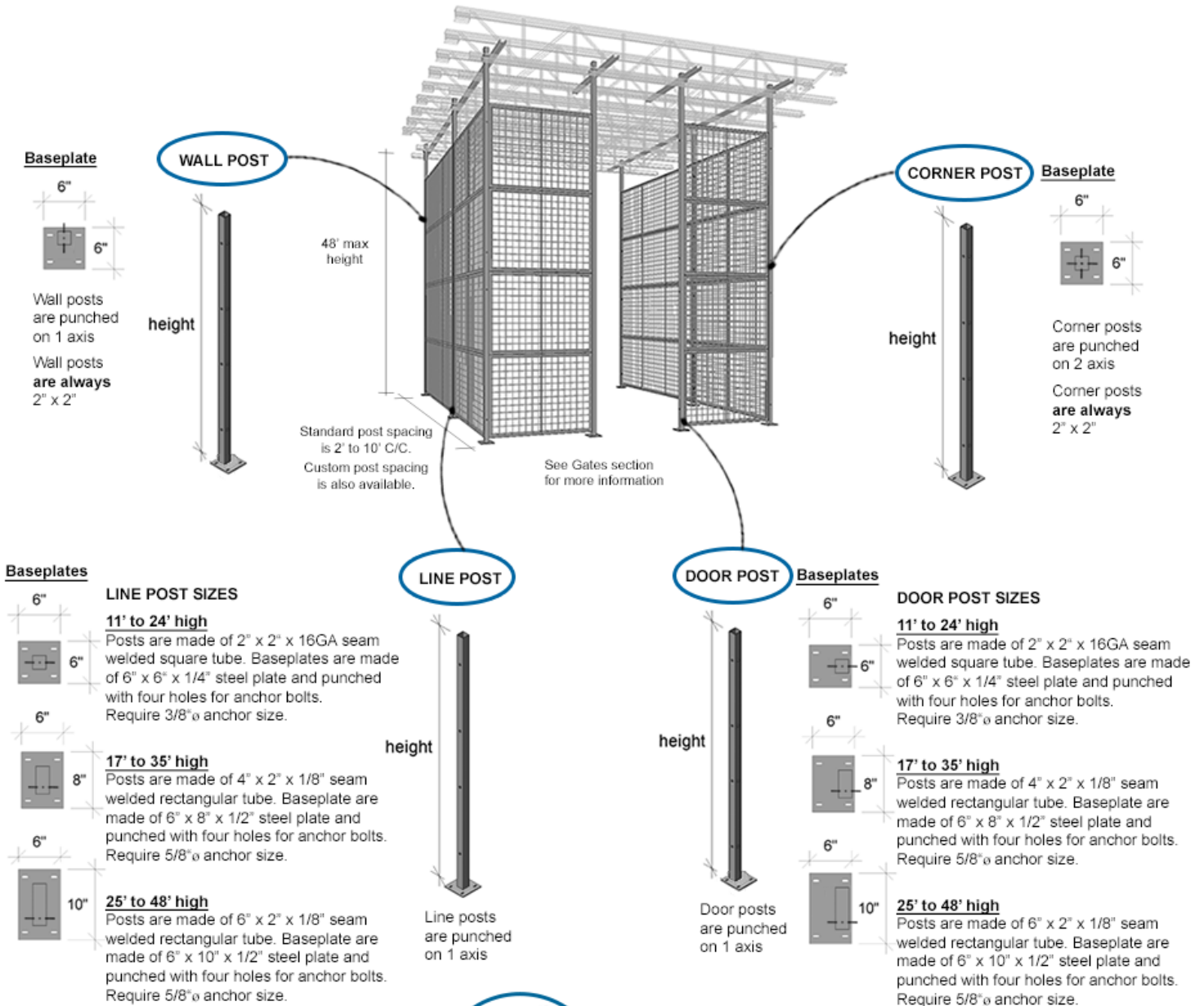
Specifications

Post Height	2" x 2" Posts = 3' to 24' high, with Base Plate = 6" x 6" x 1/4"
	2" x 4" Posts = 25' to 35' high, with Base Plate = 8" x 6" x 1/2"
	2" x 6" Posts = 36' to 48' high, with Base Plate = 10" x 6" x 1/2"
Material	Hollow Structural Tubing
Finish	Powder-coated



Cogan Grey

POST DETAILS



Anchors are sold separately as an accessory.

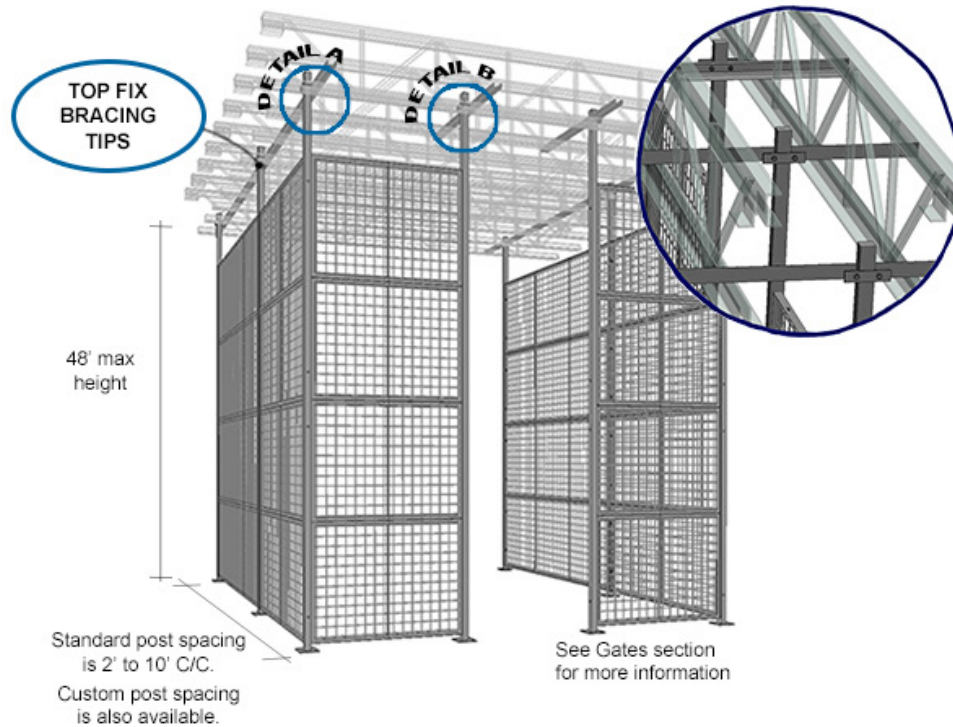


IMPORTANT:

Please note that all posts over 24' high are spliced.
See installation manual for complete details.

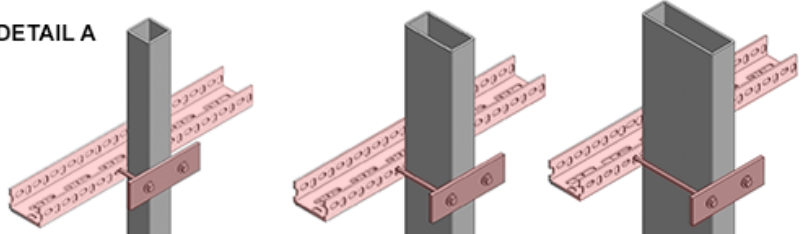
Anchors are sold separately as an accessory.

TOP FIX BRACING TIPS



SUGGESTED INSTALLATION - PARTS IN RED ARE NOT PROVIDED BY COGAN

DETAIL A

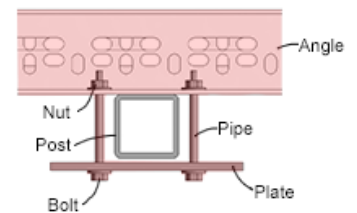


HSS: 2 x 2
PLATE: 2" x 6" x 1/4"
BOLT: Carriage bolt 1/4"Ø
- 3" long or Treated rod 5/16"Ø - 3" long
PIPE: 1/2" STD (0.84"Ø OD)
- 2 1/8" long.

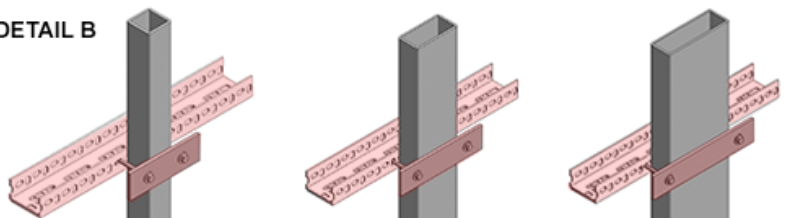
HSS: 2 x 4
PLATE: 2" x 6" x 1/4"
BOLT: Carriage bolt 5/16"Ø
- 5" long or Treated rod 5/16"Ø - 5" long.
PIPE: 1/2" STD (0.84"Ø OD)
- 4 1/8" long.

HSS: 2 x 6
PLATE: 2" x 6" x 1/4"
BOLT: Treated rod 5/16"Ø
- 7" long.
PIPE: 1/2" STD (0.84"Ø OD)
- 6 1/8" long.

PLAN VIEW



DETAIL B



HSS: 2 x 2
PLATE: 2" x 6" x 1/4"
BOLT: Carriage bolt 1/4"Ø
- 3" long.
PIPE: 1/2" STD (0.84"Ø OD)
- 2 1/8" long.

HSS: 2 x 4
PLATE: 2" x 8" x 1/4"
BOLT: Carriage bolt 1/4"Ø
- 3" long.
PIPE: 1/2" STD (0.84"Ø OD)
- 2 1/8" long.

HSS: 2 x 6
PLATE: 2" x 10" x 1/4"
BOLT: Carriage bolt 1/4"Ø
- 3" long.
PIPE: 1/2" STD (0.84"Ø OD)
- 2 1/8" long.