



AFTERMARKET SOLUTIONS CATALOGUE



BLUE GIANT[®]
AFTERMARKET SOLUTIONS

Table of Contents

Terms and Conditions	4
Loading Dock Aftermarket Products	
Manual Light Communication Packages	5
Automatic Light Communication Packages	5
Dock Lights	6
Fans	8
Replacement Traffic Lights	9
Stop and Go Lights	8
Dock Guide Lights and Reflective Guides	10
Dock Bumpers	11
Door Track Guards	10
Dock Barriers and Gates	12
Folding Security Gates	13
Trailer Stands and Trailer Jacks	14
Wheel Chocks and Chock Safety Kits	15
Metal Canopies	16
Energy-Saving Solutions	
Rear Weather Seal / Sets	17
Side Weather Seal / Sets	17
Leveler Seal Wedges	18
Bottom Door Draft Seals	18
Stuffer Pads	18
Energy Seal Plus	18
Rubber Seal	19
Roller Curtain Assemblies	19
VL Vertical Storing Dock Draft Pad	19
Dock Leveler Controls	
Single Push Button Control (SP1)	20
Advanced Single Push Button Control – SP2	21
Advanced Single Push Button Control – SP2 Auto-Park	21
Blue Genius™ Gold Series I	22
Blue Genius™ Gold Series II	22
Blue Genius™ Gold Series III	23
Blue Genius™ Control Board Cover Tool	23
Upgrade Opportunities	
Universal Hydraulic Conversion Kits – Single Push-Button	24
Universal Mechanical Conversion Kits	25
Safety Toe Guards	25
Replacement Hydraulic FHE Power Pack	25
Dangerous Goods	25
Power Down Lip Assist Kit For Hydraulic Dock Levelers	26
Easy-Pull Assembly	27
Replacement Hold-Down Only - Cable Type	27
Replacement Hold-Down Only – Caliper Brake Type	28

Table of Contents

Upgrade Opportunities (continued)

Replacement Lip, Spools, and Pin (kit)	28
Lip Assist Assembly Retrofit Kit for Mechanical Dock Levelers	30
LDLR Lip Deployment Retrofit Kit for Mechanical Dock Levelers	31
MTS-M Retrofit Kit for Blue Giant Mantis / ADM Mechanical Dock Leveler	32

Dock Seals, Shelters, and Repair Accessories

Dock Seals, Dock Shelters, Rain Shroud	33
Door Seal Repair Kit	33
Inflatable Shelter Repair Kit	33

Warehouse Solutions

PVC Strip Curtains and Rolls	34
Bug Screen Doors	35
Industrial Air Curtains	35
Guard Rail Systems	36

Service Tech Accessories

Spring Socket Tool	37
Spring Removal Tool	37
Portable Maintenance Safety Stand	37

Manual Pallet Jacks

FPT-55 Manual Pallet Jack	38
EPT-55 Manual Pallet Jack	38
EPT-55-SS Stainless Steel Manual Pallet Jack (special order)	39

Paint Colors

Standard Blue	40
Battleship Grey	40
Black Gloss	40
Safety Yellow	40
Electric Pallet Trucks	40
Manual Pallet Trucks	40

Terms and Conditions

Ordering:

Parts orders will be accepted by mail, fax or e-mail.

To protect both the dealer and the factory from miscommunications that may result from shipping the incorrect part, verbal purchase orders are not accepted. All orders will require an accepted purchase order.

Order Acknowledgments:

All orders and accepted quotations will be followed up with an order acknowledgment confirming quantity, part numbers, part description, ship to address, purchase order number, expected lead times and other information that may pertain to the order.

The dealer is responsible for reviewing the order acknowledgement issued by the factory and notifying of any discrepancies against the dealer's purchase order. The factory cannot be held 100% liable for any oversights and costs associated with discrepancies after the product is shipped.

Minimum Parts Order Value:

Parts orders are subject to a minimum order value. The minimum value for a parts order (before freight and taxes) is \$25 NET. Orders that are received less than this value are subject to an administration fee that will be submitted to the factory to avoid unnecessary charges applied in order to equal the sum of \$25 and will be entered as a separate line item identified as "min-ord".

The dealer is encouraged to consolidate orders prior to submitting to the factory to avoid unnecessary charges.

Ship Complete:

Unless identified by the dealer at time of order, the standard practice is to ship orders once complete. Orders will be held for shipment until complete to minimize customer freight charges, should an item be on back order.

Parts Warranty Policy:

The following guidelines and documentation have been assembled to assist our distribution network in administering parts orders, warranty claims and other related policies as it applies to aftermarket sales. The warranty policies are a statement of the factory's intent to rectify component or parts failures resulting from defective materials or substandard workmanship at the time of manufacture. No other responsibility is implied or assumed. Furthermore, the factory assumes no responsibility or liability for consequential damages of any kind that may result from the sale of any component or parts: The factory will deem whether or not a defective component or part is required to be returned with the warranty claim. A step by step warranty process can be viewed online and the warranty claim form can be downloaded from our website.

Warranty Period:

All replacement components and/or parts are warranted for a period of 90 days from date of shipment.

Parts Returned (RGA)

A minimum 25% restocking fee will be applied if the RGA is initiated due to dealer error.

Blue Giant will not accept returns of installed parts, electrical

components, bearings, seals, batteries or chargers. Special quoted parts are non-returnable.

Return freight prepaid by the dealer.

Freight:

All prices are FOB factory. Please ensure that detailed shipping instructions appear on all orders. Collect shipments must clearly identify the carrier of choice and account number to be billed. Returned and/or refused shipments resulting in back-charges to the factory will be billed back to the dealer at cost plus an additional \$25 NET administration fee.

Orders being shipped via couriers, other than Blue Giant Preferred Carriers (see below), must allow up to an additional 24 hours for shipping as non-preferred carriers may not respond to the original pick-up request in a timely manner.

The dealer may also opt for prepay and add terms whereby the factory arranges shipment through preferred carriers and/or couriers. Due to volume discounts, we pass the savings along to the dealers. Freight charges will be added and appear on your parts invoices.

For dealer orders marked pick up, the Parts Department will notify the dealer when the order is ready for pick up. If the order is not picked up within two days from the first notification, the factory will ship out the order via a preferred carrier or courier, terms prepay and add. The freight charges will be added to your parts invoice.

Freight charges and/or claims, as a result of damage to goods in transit are the responsibility of the dealer. Always mark noticeable damages and deficiencies on the proof of delivery slip before accepting the shipment. The factory cannot assist if the dealer does not act first.

Preferred Carriers

FOR SHIPMENTS WITHIN USA:

UPS (up to 80 lb per box) / LTL Freight Transport (over 80 lb skidded)

FOR SHIPMENTS WITHIN CANADA:

Purolator (up to 80 lb per box) / Conway (over 80 lb skidded)

FOR SHIPMENTS WITHIN MEXICO:

Freight forwarder must be specified by dealer

FOR ALL OTHER DESTINATIONS:

Freight forwarder must be specified by dealer

Safety and Lighting Systems

Manual Light Communication Package

Designed for all shipping and receiving areas. Available in 115VAC or 230VAC 50-60 Hz input / 24VDC output

The two-way communication system improves loading dock safety and protects dock equipment and building walls. The sealed, low-profile fixture is impact-resistant, weatherproof and temperature tolerant. Durable materials plus long life LEDs equal service-free units and reduced shipping and energy costs.

KIT COMES WITH: LED traffic light (black), exterior driver warning sign and two (2) position selector switch.

PRODUCT DETAILS:

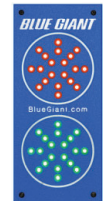
- Easily installed
- CSA approved
- Uses 30% less energy
- Shock and vibration proof
- Comes with 10' (3048 mm) – 3c/20awg communication cable
- Provides high quality light with no glare
- LEDs are good for 100,000 hours or 10 years of continuous use
- 1-year limited warranty (parts only)



Description	Part ID
Manual LED Traffic Lights / Controller(24 VAC / DC)/110V	70-0010-24M-110ES/F
Manual LED Traffic Lights / Controller(24 VAC / DC)/230V	70-0010-24M-230ES/F

OPTIONAL:

Manual Controller with Blue Traffic Light (instead of the standard black shown above)



Description	Part ID
Optional Low Profile Light 24V/110V	70-0010-24MB-110ES/F
Optional Low Profile Light 24V/230V	70-0010-24MB-230ES/F

Automatic Light Communication Package

Designed for all shipping and receiving areas. Improves loading dock safety and protects dock equipment and building walls.

KIT COMES WITH: LED traffic light (black), exterior driver warning sign and three position selector switch for Red / Auto / Green.

PRODUCT DETAILS:

- Easily installed
- CSA approved
- Uses 30% less energy
- Shock and vibration proof
- Provides high quality light with no glare
- LEDs are good for 100,000 hours or 10 years of continuous use



For Overhead Doors

Description	Part ID
Door Interlock	70-0004-1-110ES/F
	70-0004-1-230ES/F

For Dock Leveler

Description	Part ID
Dock Interlock	70-0004-2-110ES/F
	70-0004-2-230ES/F

For ML10 Vehicle Restraint

Description	Part ID
Restraint Interlock	For versions sold before March 2013:
	70-0004-3-110ES/F
	70-0004-3-230ES/F
	For versions sold after March 2013:
	70-0004-4-110ES/F
	70-0004-4-230ES/F

Dock Lights

Loading Dock Light (LED bulb not included)

A safe way for employees to control traffic communication. Contributes to a safer work environment by minimizing risk of worker injury.

PRODUCT DETAILS:

- Double-strut dock light (NOTE: does not come with bulb)
- CSA approved
- Incandescent / Polycarbonate head



Description	Part ID
40" Reach - DL40-P	LDL-150
60" Reach - DL60-P	DL-60-P

OPTIONAL REPLACEMENT BULB

Description	Part ID
90W Incandescent Bulb	026-725

LED Loading Dock Light (LED bulb included)

Blue Giant loading dock lights are equipped with an LED bulb, which burns brighter than incandescent or halogen bulbs while using 80% less energy. Lumen intensity is comparable to a 150 watt PAR 38 bulb. Improves efficiency and is ideal for use in refrigerated warehouses. The double strut design provides maximum strength and superior reliability.

PRODUCT DETAILS:

- Lamp type / Head: LED / Polycarbonate
- Arm length: 40" (1016 mm), 60" (1524 mm)
- CSA approved
- Comes with 9 high-output 3 watt LED bulbs and cage guard
- Additional arm lengths and styles available



Description	Part ID
DL40-PLED - 40" Reach	839-242
DL60-PLED - 60" Reach	DL60-PLED
DSDL40-PLED - 40" Adjustable Arm	DSDL40-PLED

OPTIONAL REPLACEMENT BULB

Description	Part ID
Replacement Bulb, LED Par 38	026-725-1

HD Series LED Heavy Duty Dock Light (LED bulb included)

Blue Giant's Heavy Duty LED (HDLED) cast aluminum lamp heads with shatterproof polycarbonate lens are virtually indestructible. These units are designed for all applications including wet and damp locations such as wash down areas.

PRODUCT DETAILS:

- Uses up to 94% less energy than an incandescent bulb
- Up to 60,000 hours life expectancy
- Ideal for food service industry or refrigerated warehouse applications
- NEMA 4 rated (for wet locations)
- 5 year extended warranty



Description	Part ID
Heavy Duty LED 40" Reach	DL40-HDLED
Heavy Duty LED 60" Reach	DL60-HDLED

Gooseneck Industrial Light (LED bulb included)

The Gooseneck Industrial Light is a low profile and easy to position light. Rotates 180 degrees for multidirectional illumination. The stainless steel arm extends 27" (686 mm). The impact and heat resistant polycarbonate light head is cool to the touch and heat resistant, increasing bulb life.

PRODUCT DETAILS:

- Robust light fixture with flexible stainless steel arm that will not sag
- No internal cooling fan required; reducing energy consumption
- Impact and heat resistant polycarbonate light head remains cool to the touch
- DLGN-L1 model features built-in LEDs to the dock light housing that are more durable and secure than screw in type lamps



Description	Part ID
Gooseneck LED - 27" Arm	DLGN-120-PLED
Gooseneck LED Module - 27" Arm	DLGN-L1
Gooseneck Incandescent - 27" Arm	DLGN-120

LED Versa Light (LED bulb included)

Blue Giant's Versa Light illuminates entire length of trailer. The fan cooling design provides longer LED life while reducing glare.

PRODUCT DETAILS:

- Built in cooling fan
- Shock resistant
- 120V, 5A, 60 Hz
- 85,000 hour LED life
- Circuit breaker switch

Description	Part ID
LED Versa Light	DLGN-VL450-LED



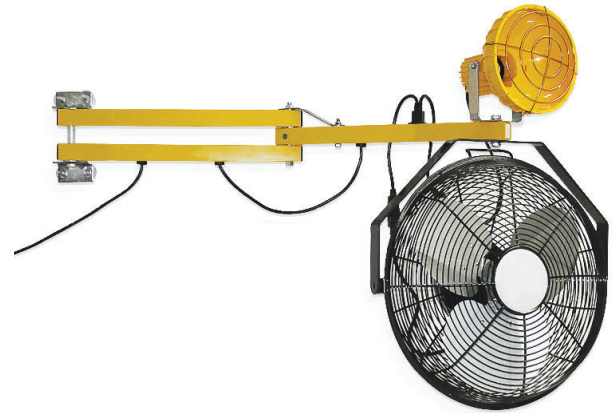
Fans

Dock Light Fan

A high capacity 3 speed fan that provides air circulation and cooling throughout the loading dock area.

PRODUCT DETAILS:

- 18" fan rated for 3000 CFM
- Arm mounting allows for adjustable air flow
- High output fan



Description	Part ID
40" Reach DL40P w/ fan	FAN DL40-P
40" Reach DL40P LED w/ fan	FANDL40-PLED

AeroTec Fan

Blue Giant dock fan is a high velocity fan that cools and circulates air in the trailer.

PRODUCT DETAILS:

- High velocity blower 6100 FT/MN
- 1500 RPM fan speed
- Adjustable swing aim



Description	Part ID
1/2 HP wall mounted dock fan /120V	BG-AT750

Turbo Fan

The Turbo Fan is an efficient way to keep employees cool. Ideal for cooling trailers or warehousing.

PRODUCT DETAILS:

- 2800 CFM high output
- 15" fan blade length
- Air distance up to 100 FT



Description	Part ID
1/2 HP dock fan 110V	BG-TURBO
1/2 HP dock fan 110V w/ LED light	BG-TURBO-LED
1/2 HP dock fan mounting arm only	BG-TURBO-ARM

Replacement LED Exterior Traffic Light - Black

PRODUCT DETAILS:

- Ultra bright high efficiency LED lights
- Designed with water resistant housing
- Lower profile unit

Description	Part ID
LED Traffic Light - Black (12V-24V)	032-806
LED Traffic Light - Yellow (12V-24V)	032-807
LED Traffic Light - Black (115V)	032-808
LED Traffic Light - Yellow (115V)	032-809

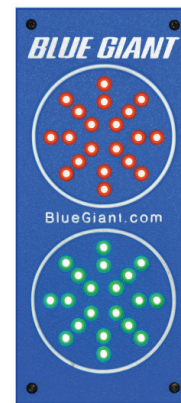


Replacement LED Traffic Light

PRODUCT DETAILS:

- Low-profile design eliminates impact damage
- Uses 30% less energy than most models
- Good for 100,000 hours or 10 years of continuous use
- Made of ultra-high molecular weight plastic

Description	Part ID
LED Traffic Light (115 VAC) SLIM LED	032-461-1
LED Traffic Light (24 VAC / DC) SLIM LED	032-461



Replacement LED Traffic Light, Yellow or Black

PRODUCT DETAILS:

- Energy-efficient (consume 5-10% the energy of an incandescent bulb) and long-lasting
- Yellow polypropylene housing will not rust, pit or corrode
- Shallow body depth with integral lens visors for extended visibility

Description	Part ID
LED Traffic Light (115V) SG10-115RG-LED - Yellow	032-398
LED Traffic Light (115V) SG10B-115RG-LED - Black	032-398-1
LED Traffic Light (24V) SG10-24RG-LED - Yellow	032-398-2
LED Traffic Light (24V) SG10B-24RG-LED - Black	787-059-1



Dock Guide Lights

Blue Giant's LED Loading Dock Guide Light Set provides drivers with a visual target to align a truck trailer with the dock door. The LED guide light is especially useful in dimly-lit environments like interior and enclosed dock bays. The bright LED lights improve visibility of the dock opening at any time of day, and may also be installed indoors to mark door openings for forklift operators and other warehouse personnel.

PRODUCT DETAILS:

- Long-life LEDs reduce replacement costs and down time.
- High impact polycarbonate housing resists shocks and vibrations.
- Uses 50 bright LEDs per light fixture.
- 120 VAC units are UL and cUL listed.



Description	Part ID
120 VAC Guide Light Set	DGLED-120/A
12-24 AC/DC Guide Light Set	DGLED-12/A

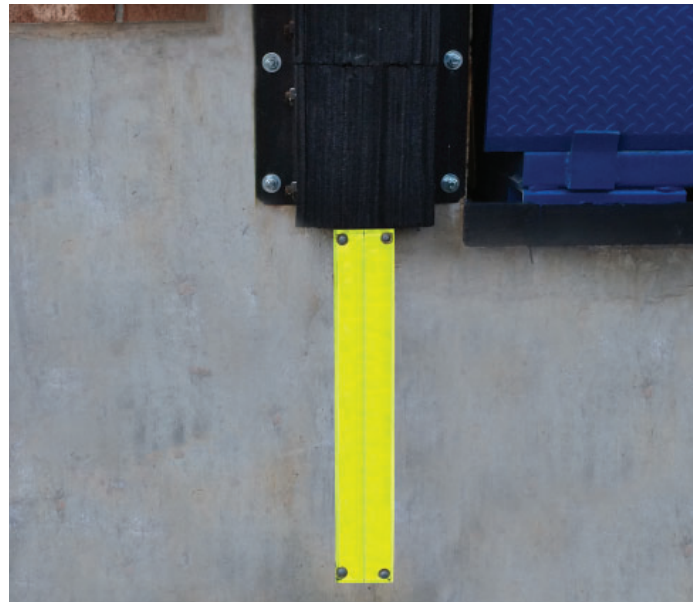
Reflective Guides

Guides trailers safely and accurately to the center of the dock.

PRODUCT DETAILS:

- Clearly identifies the dock location for incoming traffic
- Improves dock visibility in poor weather conditions
- Light is 4-5 times more vivid than standard bead reflectors

Description	Part ID (set)
Reflective Guides – 24" 4" W x 24" L (101 x 610 mm)	70-0001-24



SENTINEL SERIES Loading Dock Bumpers

The Most Important Component of Your Dock

Protect your building walls and the trailers that back into your loading bay with the innovative Blue Giant Sentinel Series Bumpers, available in steel-faced, laminated or molded. Each model is available in different shapes, sizes, and configurations to suit your application requirements.

Model	Standard Size	Descrip	Wt.
BG410-12	4.5" Proj x 10" High x 12" Wide	Laminated - Angle/Angle	27
BG410-14	4.5" Proj x 10" High x 14" Wide	Laminated - Angle/Angle	31
BGV420-11	4.5" Proj x 20" High x 11" Wide	Vertical Laminated - Angle/Angle	30
BGV620-11	6" Proj x 20" High x 11" Wide	Vertical Laminated - Angle/Angle	50
BGV420-11SF	4" Proj x 20" High x 11" Wide	Vertical Steel Faced - Angle/Angle	60
BGV620-11SF	6" Proj x 20" High x 11" Wide	Vertical Steel Faced - Angle/Angle	75
BG-M410-13	4" Proj x 13" High x 10" Wide	Molded - DB-13 - 2 Hole	24
BG-M412-13	4" Proj x 12" High x 13" Wide	Molded - R - 4 Hole	22



See our Bumper Selection Guide and Price List to view our entire selection of over 200 SKUs, all backed by an industry-leading warranty.

Door Track Guards

Damage to door tracks can increase door maintenance costs and cause downtime. Door Track Guards can help minimize these problems.

PRODUCT DETAILS:

- Minimize track damage by absorbing blow after blow to provide solid door track protection.
- Decrease maintenance costs and downtime
- Highly Visibility safety yellow finish increases dock visibility in poor weather conditions
- Easy to install and quickly mounts to ground and wall for extra protection
- Custom sizes and styles are available upon request



Track Guards with Base and Wall Plates

Description	Height	Part ID (pair)
36" High Door Track Guards (Pair)	36" (914 mm)	70-0005-36-6
48" High Door Track Guards (Pair)	48" (1219 mm)	70-0005-48-6

Track Guard with Wall Plate Only (Z Style)

Description	Height	Part ID (pair)
36" High "Z" Guards (Pair)	36" (914 mm)	70-0005-36NB
48" High "Z" Guards (Pair)	48" (1219 mm)	70-0005-48NB

Dock Defender Barriers

Protect Employees and Goods from Loading Dock Accidents

The Blue Giant Dock Defender is a 42" tall barrier that has been tested to stop 13,500lb @ 6.5mph. It's powder coated, solid steel construction is virtually maintenance free. It features a locking latch mechanism and includes all of the fasteners required for installation. The dock barrier is held together by heavy duty plate steel hinges that contain 1" pivot pins with oilite bronze self-oiling bushings.

Available in Single and Double Barrier Configurations (Optional Bottom Guard for Single Barriers - Shown on Right).

PRODUCT DETAILS:

- Tested to stop 13,500lb @ 6.5mph
- High Visibility Safety Yellow @ 42" in height
- Zero Maintenance Required
- Effortless closing/opening
- Locking barrier gate for security
- Can be interlocked with loading dock control panels for added safety and efficiency



Single Barrier with Bottom Guard

Description	Part ID	Weight	Bottom Guard
BG Dock Defender Barrier - Fits Openings 72" Wide - Single Barrier	BGDB-10-72	660 lbs	Add
BG Dock Defender Barrier - Fits Openings 96" Wide - Single Barrier	BGDB-10-96	660 lbs	Add
BG Dock Defender Barrier - Fits Openings 108" Wide - Single Barrier	BGDB-10-108	660 lbs	Add
BG Dock Defender Barrier - Fits Openings 120" Wide - Single Barrier	BGDB-10-120	660 lbs	Add
BG Dock Defender Barrier - Fits Openings 72" Wide - Double Barrier	BGDB-20-72	660 lbs	N/A
BG Dock Defender Barrier - Fits Openings 96" Wide - Double Barrier	BGDB-20-96	660 lbs	N/A
BG Dock Defender Barrier - Fits Openings 108" Wide - Double Barrier	BGDB-20-108	660 lbs	N/A
BG Dock Defender Barrier - Fits Openings 120" Wide - Double Barrier	BGDB-20-120	660 lbs	N/A

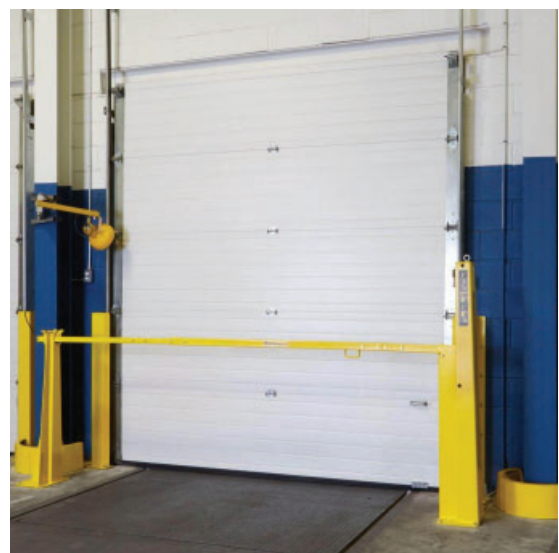
Blue Giant Dock Gate

Blue Giant Dock Gates act as a visual barrier on the loading dock, deterring against falls, accidents, and unwanted passage. They are more durable and safer than simple, basic dock chains.

PRODUCT DETAILS:

- One size fits most: one gate can cover 8', 9', and 10' wide openings.
- Heavy duty steel construction with bright safety yellow finish is highly visible and durable.
- Easy installation and easy access – quick release arm allows the arm to go from locked position to open, and vice versa in a snap.
- Simple Tagout/Lockout system can be used when the dock or door is out of service.

42" high design meets OSHA Standard 1910.23(5), which states: A standard railing shall consist of top rail, intermediate rail, and posts, and shall have a vertical height of 42 inches nominal from upper surface of top rail to floor, platform, runway, or ramp level.



Description	Part ID	Weight
Blue Giant Loading Dock Gate - Fits Openings from 96" to 120" Wide	BG-DG-01	180 lbs

Folding Security Gates

Manage your environment by protecting sensitive and secure areas from theft, and trespassing. Folding security gates also allow fresh air to enter the building, creating a more comfortable work environment.

Double Gates are used on larger openings like overhead and loading dock doors. They are two-piece gates that will swing and pivot 180 degrees, allowing forklifts and other traffic to move freely in and out without any interference from the gates.

PRODUCT DETAILS:

- Gates are painted enamel black and made from standard type channel 3/4" (14 gauge), riveted back-to-back with 1-1/2" x 1-1/2" x 1/8" side rails for extra strength.
- Gates simply lock together at the middle with a standard padlock.
- All Gates are shipped complete with two mounting brackets, two washers, two casters, and a drop-pin.
- For gates that will be installed inside a dock door, extended brackets are available to clear overhead door tracks.
- All Gates drop an inch per foot upon expansion..



In Use Width x In Use Height	Part ID	Price 1 to 9	Price 10+	Weight
Up to 96" Wide x 72" High (2438 x 1828 mm)	BG-96-72D	Consult Factory	Consult Factory	70 lbs
Up to 96" Wide x 78" High (2438 x 1981 mm)	BG-96-78D	Consult Factory	Consult Factory	76 lbs
Up to 96" Wide x 84" High (2438 x 2133 mm))	BG-96-84D	Consult Factory	Consult Factory	82 lbs
Up to 120" Wide x 72" High (3048 x 1828 mm)	BG-120-72D	Consult Factory	Consult Factory	76 lbs
Up to 120" Wide x 78" High (3048 x 1981 mm)	BG-120-78D	Consult Factory	Consult Factory	85 lbs
Up to 120" Wide x 84" High (3048 x 2133 mm)	BG-120-84D	Consult Factory	Consult Factory	90 lbs
Up to 144" Wide x 72" High (3657 x 1828 mm)	BG-144-72D	Consult Factory	Consult Factory	86 lbs
Up to 144" Wide x 78" High (3657 x 1981 mm)	BG-144-78D	Consult Factory	Consult Factory	90 lbs
Up to 144" Wide x 84" High (3657 x 2133 mm)	BG-144-84D	Consult Factory	Consult Factory	96 lbs
Up to 168" Wide x 72" High (4267 x 1828 mm)	BG-168-72D	Consult Factory	Consult Factory	110 lbs
Up to 168" Wide x 78" High (4267 x 1981 mm)	BG-168-78D	Consult Factory	Consult Factory	144 lbs
6 in Projection Brackets to Clear Door Tracks	BG-6IN-G	Consult Factory	Consult Factory	

Need a Size Not Listed Here? No Problem! Additional Single, Double, Personnel, and Custom Sizes are Available.



Trailer Stands - Help your customers become OSHA compliant

Helps reduce the risks of costly trailer damage during loading and unloading. Supports semi-trailers to prevent upending when the trailer is not connected to a tractor. Also levels trailers parked on sloped surfaces and prevents landing gear from sinking into soft ground. These trailer stands are portable, allowing them to be easily moved and repositioned.

OSHA regulation: 1910.178(k)(3) Fixed jacks may be necessary to support a semitrailer and prevent upending during loading or unloading when the trailer is not coupled to a tractor

AUTO-STAND PLUS - For High Traffic and Busy Docks (One Recommended per Trailer)

PRODUCT DETAILS

- Up to 100,000 lbs (45,359 kgs) static load capacity
- Range: 37" (940 mm) to 48" (1219 mm)
- Heavy gauge steel construction with Safety Yellow Finish
- Large base (17" x 18-1/2")
- Gas activated, self-leveling system
- Ergonomic locking-biased security lever requires no bending
- 16" diameter solid rubber tires and ergonomic handles allow for easy handling on any surface



Auto-Stand Plus

AUTO-STAND - For Mid to Low Traffic Docks (One Recommended per Trailer)

PRODUCT DETAILS

- Up to 100,000 lbs (45,359 kgs) static load capacity
- Range: 42-1/2" (1080 mm) to 52-1/2" (1334 mm)
- Heavy gauge steel construction with Safety Yellow Finish
- Large base (17" x 18-1/2")
- Gas activated, self-leveling system with key style locking pin
- 10" diameter solid rubber tires and ergonomic handles for easy handling



Auto-Stand

RATCHET-STYLE -TRAILER STAND (Two Recommended per Trailer)

PRODUCT DETAILS

- Up to 100,000 lbs (45,359 kgs) static load capacity
- Range: 39-1/2" (1003 mm) to 51" (1295 mm)
- 8" diameter support pad (203 mm)
- 8" diameter wheels (203 mm)
- Can be used as a jack



Ratchet-Style

Description	Part ID	Recommended Per Trailer
Auto-Stand Plus	70-0002-2	1
Auto Stand	70-0002-1	1
Ratchet Style Trailer Stand	70-0002	2

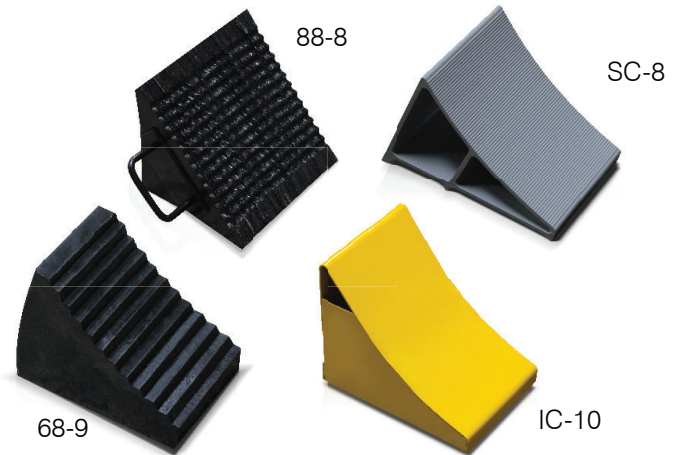
Wheel Chocks

When it comes to heavy equipment in the shipping and receiving area, safety is always a concern. When operating a powered industrial truck or forklift to load or unload trucks, disaster can occur if the truck shifts or moves. When properly placed, Blue Giant laminated wheel chocks are designed to secure and lock the truck wheels to prevent them from shifting or moving with the weight of the truck during loading / unloading.

PRODUCT DETAILS:

- Durable in all weather conditions
- Meets all OSHA requirements

Description	Part ID
Laminated Wheel Chock 88-8	090-496
Molded Wheel Chock 68-9	090-490
Aluminum Wheel Chock SC-8	090-490-ALUM
Ice Chock IC-10	701-B22



Accessories

Description	Part ID
Wheel Chock Bracket (A)	720-5000
Caution Sign English (B)	038-231E
Caution Sign French (B)	038-231F
15' Galvanized Chain (D)	091-023



Chock Safety Kits

KIT INCLUDES:

Molded / laminated chock, chain, bracket, and caution sign.

Description	Kit Part ID
Molded Kit 68-9	701-B99
Laminated Kit 88-8	701-B99-1
Ice Chock Kit IC-10	701-B22-2



Overhead Door Accessories

Metal Canopies

Reduce the risk of physical injury and legal / insurance issues. Blue Giant's metal canopies are designed to solve common problems at loading docks. Eliminate problems associated with wet, slippery dock levelers and steps, as well as ice build-up.

Loading Dock Canopies

PRODUCT DETAILS:

- 18 gauge galvanized steel
- Comes with 3" x 3" (76 x 76 mm) rain gutter
- Three support gussets
- Optional snow load support and custom sizes available (2 per canopy)
- Custom sizes are available

Description	Part ID
120" (3048 mm) x 6" (152 mm) Rear Height x 18" (457 mm) Projection	70-001808
120" (3048 mm) x 8" (203 mm) Rear Height x 24" (610 mm) Projection	70-001809
120" (3048 mm) x 12" (304 mm) Rear Height x 36" (914 mm) Projection	70-001810
Snow Load Support (2 Required)	061-0295



Man Door Canopies

PRODUCT DETAILS:

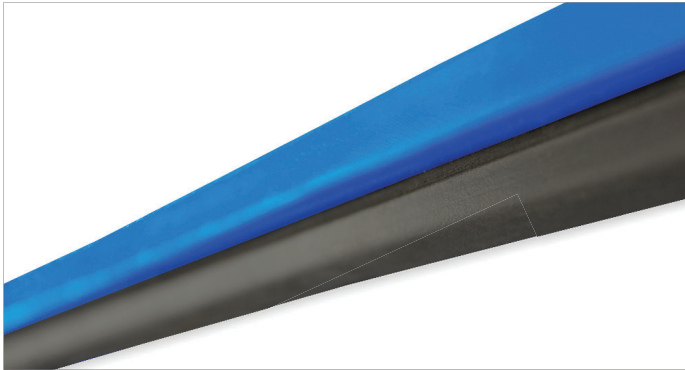
- 18 gauge galvanized steel
- Comes with 3" x 3" (76 x 76 mm) rain gutter
- Three support gussets
- Optional snow load support and custom sizes available (2 per canopy)

Description	Part ID
48" (1219 mm) x 12" (305 mm) Rear Height x 36" (914 mm) Projection	70-001811
48" (1219 mm) x 12" (305 mm) Rear Height x 48" (1219 mm) Projection	70-001814
Snow Load Support (2 Required)	061-0295



Rear Weather Seal / Sets

Energy Loss Savings: Reduces heating and cooling costs by maintaining internal temperature control.



RUBBER TYPE: 5-1/2" x 3/16" (138 x 5 mm) thick

SET INCLUDES: One aluminum retainer, one rubber weather seal, and screws (quantity is based on set).

Deck Size (Wide)	Description	Kit Part ID
5' (1524 mm)	Rear Rubber Weather Seal, 52" (1321 mm)	1001781-3
6' (1829 mm)	Rear Rubber Weather Seal, 64" (1626 mm)	1001781
6' 6" (1981 mm)	Rear Rubber Weather Seal, 70" (1778 mm)	1001781-1
7' (2134 mm)	Rear Rubber Weather Seal, 75" (1905 mm)	1001781-2

BRUSH TYPE: 6" (152 mm) wide

SET INCLUDES: One aluminum retainer, one brush weather seal, and screws (quantity is based on set).

Deck Size (Wide)	Description	Kit Part ID
5' (1524 mm)	Rear Brush Weather Seal, 52" (1321 mm)	206-5020
6' (1829 mm)	Rear Brush Weather Seal, 64" (1626 mm)	206-5020-1
6' 6" (1981 mm)	Rear Brush Weather Seal, 70" (1778 mm)	206-5020-2
7' (2134 mm)	Rear Brush Weather Seal, 75" (1905 mm)	206-5020-3



Side Weather Seal / Sets

An average gap size of 1" (25 mm) exists between the dock leveler and pit wall (on both sides). This opening is equal to having a 12" x 12" (305 x 305 mm) window of air infiltration into your building per dock position. We highly recommend using rubber or brush weather seals to prevent loss of conditioned air and keep unconditioned air out of the building.

SET INCLUDES:

Two aluminum retainers, two weather seals (brush or rubber) and screws (quantity is based on set). For 10' (3048 mm) or 12' (3658 mm) docks, order 6' (1829 mm) long seals for ease in shipping and handling.

Rubber

Description	Kit Part ID
6' (58") Long (1473 mm)	206-5017
8' (81") Long (2057 mm)	206-5017-1



Brush

Description	Kit Part ID
6' (58") Long (1473 mm)	206-5245
8' (81") Long (2057 mm)	206-5245-1

Brush (Zebra Stripe)

Description	Kit Part ID
6' (58") Long (1473 mm)	206-5083
8' (81") Long (2057 mm)	206-5083-1

Leveler Seal Wedges

Energy Loss Savings: Seals the gap between the pit wall and the dock leveler.

Description	Part ID
16oz Hypalon with Closed Cell Foam Wedges	997-WEDGES



Bottom Door Draft Seals

Energy Loss Savings: Seals the gap under existing overdoor caused by dock leveler or uneven floor.

Description	Part ID
16oz Hypalon 2" x 2" x 98"	1000098
16oz Hypalon 2" x 2" x 110"	1000110
16oz Hypalon 2" x 2" x 122"	1000122
16oz Hypalon 2" x 2" x 146"	1000146



Stuffer Pads

Eliminate gaps at the loading dock area. Reduce energy costs by sealing the space on each side of the dock leveler.

Description	Part ID
Stuffer Pad 12" x 18" x 12"	089-0012



Energy Seal Plus

Blue Giant Vinyl Foam Weather Seals keep the pit area clean and prevent conditioned air from escaping. Secure foam padding closes off gaps between the dock leveler and the pit walls, limiting heat and energy transfer at all stages of the loading and unloading process.

PRODUCT DETAILS:

- Made of triangular open cell foam covered in reinforced vinyl
- Secondary seal assembly ensures protection when the dock leveler is in use
- Rear hinge assembly flexes when the dock leveler rises and lowers, preserving the seal

Description	Part ID
6' (1.8m) long	720-ESP-6
8' (2.4m) long	720-ESP-8
10' (3m) long	720-ESP-10



Rubber Seal (chain cup draft plug)

A simple solution. Stops air infiltration on any dock leveler with a pull chain.

Description	Part ID
Draft Plug	200-02986



Roller Curtain Assembly

Protect your hydraulic dock leveler with a roller curtain. The roller curtain assembly is designed to keep pests and debris out, maintaining a clean pit. Autumn leaves, snow and rain are also deflected, while reducing heating and cooling costs. With fewer hours spent cleaning the pit, this dock accessory will save your facility time and money.

PRODUCT DETAILS:

- 22oz yellow vinyl
- Includes mounting brackets and grommets on bottom edge
- 12" (305 mm) O.C. or retaining tabs as shown
- Reduces heating, cooling and maintenance costs
- Helps prevent drafts
- For use with hydraulic levelers only



Description	Legacy Part ID	Next Gen Part ID
Fits Up to 72" Wide Hydraulic Levelers	839-080-1	KIT-DOCK-HYD-RCURTAIN-72
Fits Up to 78" Wide Hydraulic Levelers	839-080-2	KIT-DOCK-HYD-RCURTAIN-78
Fits Up to 84" Wide Hydraulic Levelers	839-080	KIT-DOCK-HYD-RCURTAIN-84

VL Vertical Storing Dock Draft Pad

Blue Giant Draft Pads for vertical storing dock levelers seal the gap between the deployed unit and the pit floor, minimizing energy loss and supporting a clean pit.

PRODUCT DETAILS:

- Made from 22oz blue vinyl
- Secure attachment apparatus
- Custom sizes available



Description	Part ID
VL Vertical Storing Dock Draft Pad - 6 Ft	1005251
VL Vertical Storing Dock Draft Pad - 6 Ft 6 in	1005251-1
VL Vertical Storing Dock Draft Pad - 7 Ft	1005251-2

Next Gen Vertical Storing Dock Leveler Draft Pad

PRODUCT DETAILS:

- Made from 22oz black vinyl
- Secure attachment apparatus
- Custom sizes available



Description	Part ID
Next Gen Vertical Dock - 72"	KIT-V-DOCK-DRAFT-PAD-72W
Next Gen Vertical Dock - 78"	KIT-V-DOCK-DRAFT-PAD-78W
Next Gen Vertical Dock - 83"	KIT-V-DOCK-DRAFT-PAD-83W

Dock Leveler Controls

Single Push Button Control (SP1)

The Single Push Button Control (SP1) operates a standalone, pit-style hydraulic dock leveler via a constant-pressure "I" (UP) button.

PRODUCT DETAILS:

- UL / CSA / CE approved
- Overall dimensions: 6 1/2" x 3 1/4" x 5 1/8" (165 x 83 x 130 mm)
- NEMA4X / IP65 rated, plastic enclosure is resistant to both corrosion and wet conditions

Without Overload Protection

Description	Part ID
1 H.P. 460/3/60	027-005-L
1 H.P. 115/1/50-60	027-006-L
1 H.P. 208/230/240/1/50-60	027-007-L
1 H.P. 208-230/3/60	027-008-L
1 H.P. 575/3/60	027-009-L
1 HP. 380-415/3/50	027-168-L

With Overload Protection

Description	Part ID
1 H.P. 460/3/60	027-005-LO
1 H.P. 115/1/50-60	027-006-LO
1 H.P. 208/230/240/1/50-60	027-007-LO
1 H.P. 208-230/3/60	027-008-LO
1 H.P. 575/3/60	027-009-LO
1 HP. 380-415/3/50	027-168-LO

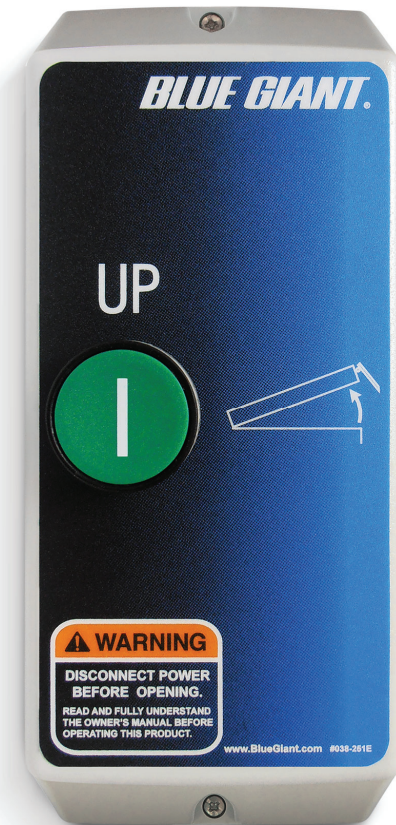
With Terminal Block Provision

Description	Part ID
1 H.P. 460/3/60	027-005-T
1 H.P. 115/1/50-60	027-006-T
1 H.P. 208/230/240/1/50-60	027-007-T
1 H.P. 208-230/3/60	027-008-T
1 H.P. 575/3/60	027-009-T
1 HP. 380-415/3/50	027-168-T

CSA and UI Specification on Motor Overload Protection

The standard powerpack is equipped with a 1 HP motor which requires appropriate overcurrent protection (fuses). These motors are rated for intermittent duty because they are in operation only when the control push button is depressed. It does not have and will not require an overload protection as in compliance with the Canadian Safety Authority (CSA), Ontario Electrical Safety (ESA), and Underwriters Laboratories (UL) codes amongst others. Please review the excerpt from the CSA and UL code book in regards to overload protection for motors.

- CSA Excerpt: 28-308 Overload protection not required
- UL Excerpt: 430.33 Intermittent and Similar Duties



Advanced Single Push Button Control – SP2

The Single Push Button Control (SP2) operates a standalone airbag or pit-style hydraulic dock leveler.

PRODUCT DETAILS:

- UL / CSA approved
- Overhead door sensor, prevents use of the dock leveler when the overhead door is closed
- Can be connected with mechanical limit switch or photoeye sensor
- Overall dimensions: 5 15/16" L x 6 15/32" W x 4" D (151 x 164 x 102 mm)
- NEMA4X / IP65 rated, plastic enclosure is resistant to both corrosion and wet conditions

Description	Part ID
110-130V, 1PH, 50-60Hz w. 24 VDC Transformer (std.)	SP2S1115-ES/F
208-240V, 3PH, 50-60Hz w. 24 VDC Transformer (std.)	SP2S1230-ES/F
380-480V, 3PH, 50-60Hz w. 24 VDC Transformer (std.)	SP2S3460-ES/F
575-600V, 3PH, 50-60Hz w. 24 VDC Transformer (std.)	SP2S3575-ES/F



Advanced Single Push Button Control – SP2 Auto-Park

The Single Push Button Control (SP2) with Auto-Park feature operates a pit-style hydraulic dock leveler.

PRODUCT DETAILS:

- UL / CSA approved
- Overhead door sensor, prevents use of the dock leveler when the overhead door is closed, can be connected with mechanical limit switch or photoeye sensor
- Auto-park feature is controlled via a selector switch, can be connected with mechanical limit switch or 24VDC proximity sensor
- Overall dimensions: 5 15/16" L x 6 15/32" W x 4" D (151 x 164 x 102 mm)
- NEMA4X / IP65 rated, plastic enclosure is resistant to both corrosion and wet conditions

Description	Part ID
110-130V, 1PH, 50-60Hz w. 24 VDC Transformer (std.)	SP2A1115-ES/F
208-240V, 3PH, 50-60Hz w. 24 VDC Transformer (std.)	SP2A1230-ES/F
208-240V, 3PH, 50-60Hz w. 24 VDC Transformer (std.)	SP2A3230-ES/F
380-480V, 3PH, 50-60Hz w. 24 VDC Transformer (std.)	SP2A3460-ES/F
575-600V, 3PH, 50-60Hz w. 24 VDC Transformer (std.)	SP2A3575-ES/F



NEMA Rating Chart

Enclosure Type	Typical Mounting Location	Short Designation	Protects Against
NEMA 12	Indoor	Watertight / Drip-tight / Dust-resistant	Dust, dirt, dripping non-corrosive liquids
NEMA 4	Indoor / Outdoor	Watertight / Rain-resistant	Splashes, circulating dust, ice
NEMA 4X	Indoor / Outdoor	Watertight / Rain-resistant	Splashes, windblown dust, ice, corrosion

Blue Genius™ Gold Series I (720-BGGF0)

The Blue Genius™ Gold Series I operates a standalone air-powered or hydraulic dock leveler.

NOTE: When ordering a complete unit or a replacement touchscreen, model number and serial number are required.

PRODUCT DETAILS:

- UL / CSA approved
- NEMA4X / IP65 polycarbonate enclosure- resistant to both corrosion and wet conditions
- Onboard diagnostics and self-testing
- Blue Genius™ memory and service interval indicator
- Programmable ports; two inputs and one output for interlocking purposes
- Printed circuit board technology



Description	Part ID	Price
110-130V, 1PH, 50-60Hz w. 24 VDC Transformer (std.)	Consult Factory	Consult Factory
208-240V, 1PH, 50-60Hz w. 24 VDC Transformer (std.)	Consult Factory	Consult Factory
208-240V, 3PH, 50-60Hz w. 24 VDC Transformer (std.)	Consult Factory	Consult Factory
380-480V, 3PH, 50-60Hz w. 24 VDC Transformer (std.)	Consult Factory	Consult Factory
575-600V, 3PH, 50-60Hz w. 24 VDC Transformer (std.)	Consult Factory	Consult Factory

Blue Genius™ Gold Series II (720-BGG2-INC)

The Blue Genius™ Gold Series II operates a standalone hydraulic or electric vehicle restraint.

NOTE: When ordering a complete unit or a replacement touchscreen, model number and serial number are required.

PRODUCT DETAILS:

- UL / CSA approved
- NEMA4X / IP65 polycarbonate enclosure, resistant to both corrosion and wet conditions
- Onboard diagnostics and self-testing
- Blue Genius™ memory and service interval indicator
- Programmable ports; two inputs and one output for interlocking purposes
- Printed circuit board technology
- Red / Green / Yellow led interior lights communication system



Description	Part ID	Price
110-130V, 1PH, 50-60Hz w. 24 VDC Transformer (std.)	Consult Factory	Consult Factory
208-240V, 1PH, 50-60Hz w. 24 VDC Transformer (std.)	Consult Factory	Consult Factory
208-240V, 3PH, 50-60Hz w. 24 VDC Transformer (std.)	Consult Factory	Consult Factory
380-480V, 3PH, 50-60Hz w. 24 VDC Transformer (std.)	Consult Factory	Consult Factory
575-600V, 3PH, 50-60Hz w. 24 VDC Transformer (std.)	Consult Factory	Consult Factory

Blue Genius™ Gold Series III (720-BGGCP)

The Blue Genius™ Gold Series III operates a combo dock position.

NOTE: When ordering a complete unit or a replacement touchscreen, model number and serial number are required.

PRODUCT DETAILS:

- UL / CSA approved
- NEMA4X / IP65 polycarbonate enclosure-resistant to both corrosion and wet conditions
- Onboard diagnostics and self-testing
- Blue Genius™ memory and service interval indicator
- Programmable ports; two inputs and one output for interlocking purposes
- Printed circuit board technology
- Red / green / yellow led interior lights communication system



Description	Part ID	Price
110-130V, 1PH, 50-60Hz w. 24 VDC Transformer (std.)	Consult Factory	Consult Factory
208-240V, 1PH, 50-60Hz w. 24 VDC Transformer (std.)	Consult Factory	Consult Factory
208-240V, 3PH, 50-60Hz w. 24 VDC Transformer (std.)	Consult Factory	Consult Factory
380-480V, 3PH, 50-60Hz w. 24 VDC Transformer (std.)	Consult Factory	Consult Factory
575-600V, 3PH, 50-60Hz w. 24 VDC Transformer (std.)	Consult Factory	Consult Factory

Blue Genius™ Control Board Cover Tool

Designed for easy use by service technicians during repair and maintenance procedures.

Description	Part ID
Control Board Cover Tool	70-007156



Upgrade Opportunities

Universal Hydraulic Conversion Kits – Single Push-Button

Advantages of the Blue Giant Conversion Kit:

RELIABILITY: The normal locking and unlocking of all mechanical Hold down systems on mechanical dock levelers create wear on components that eventually cause down time for repairs.

LOWER LIFETIME OPERATING COST: Maintenance requirements and total lifetime operating costs are significantly lower for hydraulic dock levelers compared to mechanical dock levelers.

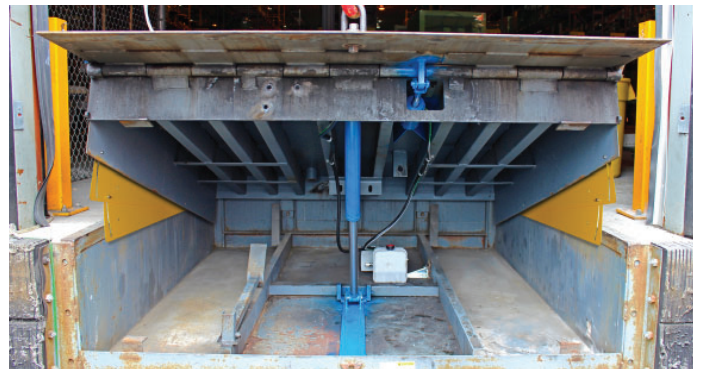
SAFETY: Wall-mounted pushbutton operation of hydraulic units enables easier operator control and reduces the risk of muscle strain and other worker injuries which could result from deploying a mechanical dock leveler.

LOW NOISE LEVEL: Smooth, quiet operation at the touch of a button contributes to a more pleasant work environment.

KIT INCLUDES:

Power pack, motor starter, hydraulic cylinders mounting plates, hoses and fittings and installation manual.

NOTE: This kit is only to be used on 6' (1829 mm) long and 8' (2438 mm) long dock leveler models. For larger sizes (10' and 12' / 3048 mm x 3658 mm) please consult the factory for pricing and part numbers, as the lift cylinder and hydraulic hose will be longer.



Toe Guards recommended with hydraulic upgrade.

SINGLE PHASE

Description	Part ID
115/1/60 (single-acting lip cylinder)	709-0002C
115/1/60 (double-acting lip cylinder)	709-0002-52C
208/1/60 (single-acting lip cylinder)	709-0002-1C
208/1/60 (double-acting lip cylinder)	709-0002-36C
230/1/60 (single-acting lip cylinder)	709-0002-2C
230/1/60 (double-acting lip cylinder)	709-0002-37C

THREE PHASE

Description	Part ID
208/3/60 (single-acting lip cylinder)	709-0002-3C
208/3/60 (double-acting lip cylinder)	709-0002-38C
230/3/60 (single-acting lip cylinder)	709-0002-4C
230/3/60 (double-acting lip cylinder)	709-0002-39C
460/3/60 (single-acting lip cylinder)	709-0002-5C
460/3/60 (single-acting lip cylinder)	709-0002-4C
460/3/60 (double-acting lip cylinder)	709-0002-40C
575/3/60 (single-acting lip cylinder)	709-0002-6C
575/3/60 (double-acting lip cylinder)	709-0002-41C

Universal Mechanical Conversion Kits

Universal Ratchet Hold-Down Kit Featuring Easy-Pull:

- Cadmium-plated ratchet bar and pawl teeth designed for consistent and reliable operation.
- Compatible with all mechanical dock levelers with capacities up to 50,000 lb (22,727 kg).
- Includes complete parts assemblies: hardware and instruction manual
- Easy-Pull is designed to make mechanical dock levelers up to 16% easier to operate than competitive ratchet hold-down kits

Description	Part ID
Mechanical Hold-Down - Ratchet Type Kit	70-003517-KIT

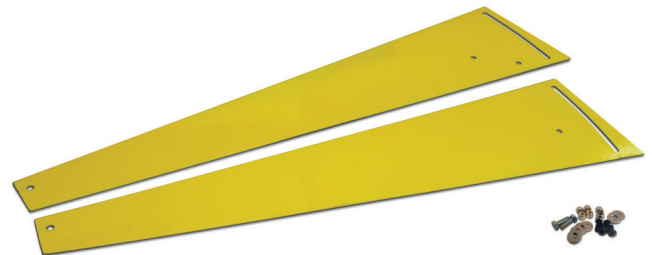


Safety Toe Guards

Full range toe guards are required under OSHA for all mechanical to hydraulic dock conversions. Kit includes: Two-piece (per side) of 12 gauge double-slotted and pivoted steel panels painted safety yellow. Comes with mounting hardware.

NOTE: Each sold separately.

Description	Kit Part ID
For 6' (1829 mm) or 8' (2438 mm) Long Models	202-5024-99
For 10' (3048 mm) Long Models	202-5024-1-99



Replacement Hydraulic FHE Power Pack

Description	Kit Part ID
1 H.P. 115/208/230/1/60	033-403-1K
1 H.P. 208/460/3/60	033-404-1K
1 H.P. 575/3/60	033-405-1K



Dangerous Goods

To avoid unnecessary freight surcharges and documentation that could make shipping certain parts and components across the border prohibitive, the following items are excluded from shipping through the factory parts department and may require the dealer to source locally. Hydraulic fluid: found in cylinders, powerpack reservoirs, etc. (acceptable alternatives that can be sourced locally include Dextron II and N32 hydraulic fluid).

Power Down Lip Assist Kit For Hydraulic Dock Levelers

NOTE: Powerpack not included.

To be used only with self-contained dock levelers not exceeding 8' (2438 mm). For longer models, consult factory for pricing and part number, as a longer hydraulic hose will be necessary.

Item No.	Qty	Part ID	Description
1	1	211-7002	Cylinder Assembly (double-acting)
2	1	034-551	Fitting
3	1	100-5000-7	Hose, 12" long (305 mm) 6# High Pressure
4	1	100-5000-25	Hose, 72" long (1829 mm) 6# High Pressure
5	1	033-677	Plug, Lip Check
6	1	118-905	Spacer Block
7	1	118-904	Switch Activator (power down lips)
8	1	012-204	Washer

Description	Kit Part ID
Kit	783-205

Easy-Pull Assembly

Easy-Pull Features:

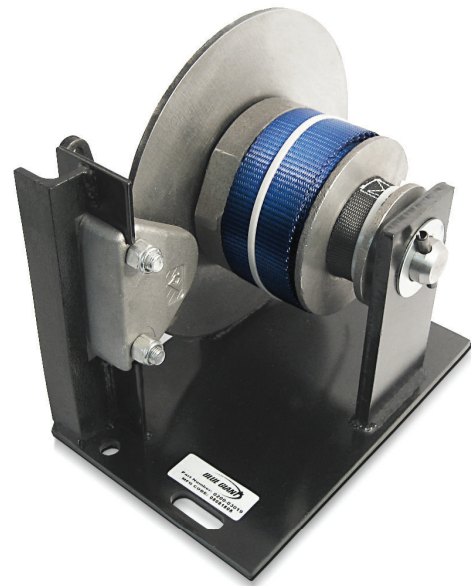
- Can be added to any competitive ratchet hold-down system to increase productivity.
- Designed to make mechanical dock levelers up to 16% easier to operate

Description	Part ID
Easy-Pull Assembly	1001386



Replacement Hold-Down Only – Caliper Brake Type For ADM/Mantis Units

Description	Part ID
Caliper Brake Type Replacement Hold-Down (comes with straps)	200-03019-1

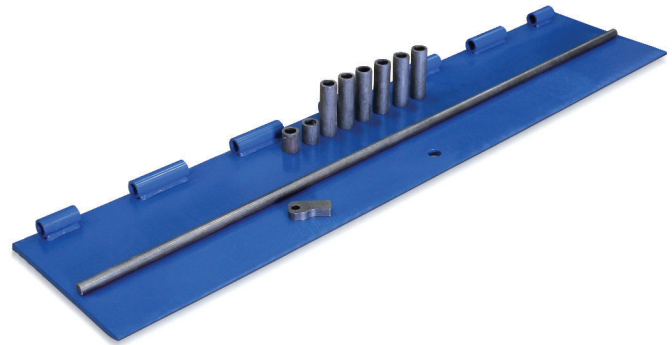


Replacement Lip, Spools, and Pin (kit)

Blue Giant offers a complete selection of replacement lips that can be retrofitted to virtually all dock leveler types.

Since spool sizes vary between manufacturers, Blue Giant offers a replacement kit that includes the lip plate with welded lip spools, deck spools, and the lip pin. This eliminates the potential problems involved in trying to interlink the new lip with deck spools from a different manufacturer.

Lip bracket will be shipped loose unless the dealer instructs otherwise. Installation of the lip actuator may be easier if the lip bracket is installed at the site. Special consideration must be given to the existing deck spools' dimensions and layout if a new lip is purchased without the replacement deck spools and lip pin.



PRODUCT DETAILS:

- Standard paint finishes are "Blue Giant" blue RAL # 5019. Other colors available include battleship grey and black
- Kit includes: Replacement lip, deck spools, headboard gussets (if applicable), and lip pin

SET INCLUDES:

- Quantity x 2 - Lag Plate Assembly
- Quantity x 2 - Lip Stop Assembly
- Quantity x 8 - Anchor Wedge

Length x Width	Capacity	Description	Kit Part ID
16" x 72" (406 x 1829 mm)	25,000 lb (11,363 kg)	1/2" (13 mm) Thick Check Plate	LSP-1672-25
	30,000 lb (13,636 kg)		LSP-1672-30
	35,000 lb (15,909 kg)		LSP-1672-35
	40,000 lb (18,181 kg)	5/8" (16 mm) Thick Check Plate	LSP-1672-40
	45,000 lb (20,454 kg)		LSP-1672-45
	50,000 lb (22,727 kg)		LSP-1672-50

Length x Width	Capacity	Description	Kit Part ID
16" x 78" (406 x 1981 mm)	25,000 lb (11,363 kg)	1/2" (13 mm) Thick Check Plate	LSP-1678-25
	30,000 lb (13,636 kg)		LSP-1678-30
	35,000 lb (15,909 kg)		LSP-1678-35
	40,000 lb (18,181 kg)	5/8" (16 mm) Thick Check Plate	LSP-1678-40
	45,000 lb (20,454 kg)		LSP-1678-45
	50,000 lb (22,727 kg)		LSP-1678-50

Length x Width	Capacity	Description	Kit Part ID
16" x 83" (406 x 2108 mm)	25,000 lb (11,363 kg)	1/2" (13 mm) Thick Check Plate	LSP-1683-25
	30,000 lb (13,636 kg)		LSP-1683-30
	35,000 lb (15,909 kg)		LSP-1683-35
	40,000 lb (18,181 kg)	5/8" (16 mm) Thick Check Plate	LSP-1683-40
	45,000 lb (20,454 kg)		LSP-1683-45
	50,000 lb (22,727 kg)		LSP-1683-50

Length x Width	Capacity	Description	Kit Part ID
18" x 72" (457 x 1829 mm)	25,000 lb (11,363 kg)	1/2" (13 mm) Thick Check Plate	LSP-1872-25
	30,000 lb (13,636 kg)	5/8" (16 mm) Thick Check Plate	LSP-1872-30
	35,000 lb (15,909 kg)		LSP-1872-35
	40,000 lb (18,181 kg)		LSP-1872-40
	45,000 lb (20,454 kg)		LSP-1872-45
	50,000 lb (22,727 kg)		LSP-1872-50

Length x Width	Capacity	Description	Kit Part ID
18" x 78" (457 x 1981 mm)	25,000 lb (11,363 kg)	1/2" (13 mm) Thick Check Plate	LSP-1878-25
	30,000 lb (13,636 kg)	5/8" (16 mm) Thick Check Plate	LSP-1878-30
	35,000 lb (15,909 kg)		LSP-1878-35
	40,000 lb (18,181 kg)		LSP-1878-40
	45,000 lb (20,454 kg)		LSP-1878-45
	50,000 lb (22,727 kg)		LSP-1878-50

Length x Width	Capacity	Description	Kit Part ID
18" x 83" (457 x 2108 mm)	25,000 lb (11,363 kg)	1/2" (13 mm) Thick Check Plate	LSP-1883-25
	30,000 lb (13,636 kg)	5/8" (16 mm) Thick Check Plate	LSP-1883-30
	35,000 lb (15,909 kg)		LSP-1883-35
	40,000 lb (18,181 kg)		LSP-1883-40
	45,000 lb (20,454 kg)		LSP-1883-40
	50,000 lb (22,727 kg)		LSP-1883-50

Length x Width	Capacity	Description	Kit Part ID
20" x 72" (508 x 1829 mm)	25,000 lb (11,363 kg)	1/2" (13 mm) Thick Check Plate	LSP-2072-25
	30,000 lb (13,636 kg)	5/8" (16 mm) Thick Check Plate	LSP-2072-30
	35,000 lb (15,909 kg)		LSP-2072-35
	40,000 lb (18,181 kg)		LSP-2072-40
	45,000 lb (20,454 kg)		LSP-2072-45
	50,000 lb (22,727 kg)		LSP-2072-50

Description	Part ID
Lip Keepers (longer lip) Set	825-652

NOTE:

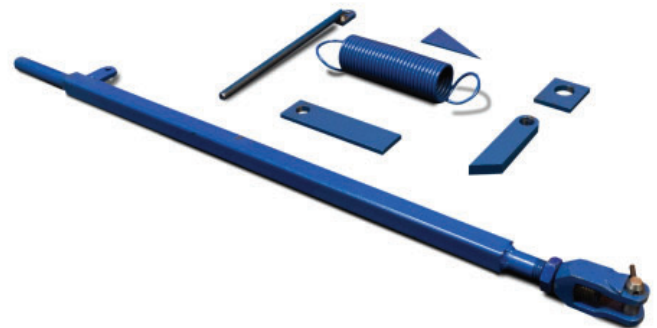
20" (508 mm) lip upgrade requires new lip keepers. One set required per dock leveler.

Length x Width	Capacity	Description	Kit Part ID
20" x 78" (508 x 1981 mm)	25,000 lb (11,363 kg)	1/2" (13 mm) Thick Check Plate	LSP-2078-25
	30,000 lb (13,636 kg)		LSP-2078-30
	35,000 lb (15,909 kg)		LSP-2078-35
	40,000 lb (18,181 kg)	5/8" (16 mm) Thick Check Plate	LSP-2078-40
	45,000 lb (20,454 kg)		LSP-2078-45
	50,000 lb (22,727 kg)		LSP-2078-50

Length x Width	Capacity	Description	Kit Part ID
20" x 83" (508 x 2108 mm)	25,000 lb (11,363 kg)	1/2" (13 mm) Thick Check Plate	LSP-2083-25
	30,000 lb (13,636 kg)		LSP-2083-30
	35,000 lb (15,909 kg)		LSP-2083-35
	40,000 lb (18,181 kg)	5/8" (16 mm) Thick Check Plate	LSP-2083-40
	45,000 lb (20,454 kg)		LSP-2083-45
	50,000 lb (22,727 kg)		LSP-2083-50

Lip Assist Assembly Retrofit Kit for Mechanical Dock Levelers

To be only used with **ONLY** 20" (508 mm) mechanical lip assembly upgrades.



KIT INCLUDES:

Qty	Part ID	Description
1	203-0023	Bracket, Lip
1	203-5041	Actuator Assembly
1	107-196	Pin, Clevis
1	013-010	Spring Pin
1	203-5043	Spring Rod Assembly
1	012-213	Washer
1	011-509	Nut
1	017-077	Lip Assist Spring

Description	Kit Part ID
Lip Assist Assembly Retrofit Kit	203-5040

LDLR Lip Deployment Retrofit Kit for Mechanical Dock Levelers

PROBLEM:

Over time, mechanical docks can develop lip deployment problems, such as failure to fully extend or weakening of the deployment force.

SOLUTION:

Blue Giant offers a 'Lip Deployment Retrofit Kit' to fix this problem.

ACTION:

Replacement of the old multi-link plate or shock absorber with newly designed 'lip latch assembly', followed by the installation of a 'lip assist spring'.



MTS-M Retrofit Kit for Blue Giant Mantis / ADM Mechanical Dock Leveler

PROBLEM:

Over time, mechanical docks can develop lip deployment problems, such as failure to fully extend or weakening of the deployment force.

SOLUTION:

Blue Giant offers a 'Lip Deployment Retrofit Kit' to fix this problem. Replacement of the old multi-link plate or shock absorber with newly designed 'lip latch assembly', followed by the installation of a 'lip assist spring'.

Lip Length	Capacity	Model	Kit Part ID
16" and 18" (406 mm and 457 mm)	25,000 and 30,000 lb (11,340 and 13,608 kg)	MTS6-6-25 and MTS6-6-30	200-03400
20" (508 mm)			200-03400-2
16" (406 mm)		MTS6-8-25 and MTS6-8-30	200-03400
18" and 20" (457 mm and 508 mm)			200-03400-2
16" (406 mm)		MTS6-10-25 and MTS6-10-30	200-03400-2
16" and 18" (406 mm and 457 mm)	35,000 and 40,000 lb (15, 876 and 18,144 kg)	MTS6-6-35 and MTS6-6-40	200-03400-2
20" (508 mm)			200-03400-1
16" and 18" (406 mm and 457 mm)		MTS6-8-35 and MTS6-8-40	200-03400-2
20" (508 mm)			200-03400-1
16" (406 mm)	25,000 and 30,000 lb (11,340 and 13,608 kg)	MTS66-6-25 and MTS66-6-30	200-03400
18" (457 mm)			200-03400-2
20" (508 mm)		200-03400-1	
16" (406 mm)		MTS66-8-25 and MTS66-8-30	200-03400
16" and 18" (406 mm and 457 mm)	35,000 and 40,000 lb (15, 876 and 18,144 kg)	MTS66-8-35 and MTS66-8-30	200-03400-2
16" (406 mm)		MTS66-6-35 and MTS66-6-40	200-03400-2
18" and 20" (457 mm and 508 mm)		200-03400-1	
16" (406 mm)		MTS66-8-35 and MTS66-8-40	200-03400-2
18" and 20" (457 mm and 508 mm)			200-03400-1
16" (406 mm)			200-03400-2
18" and 20" (457 mm and 508 mm)			200-03400-1
16", 18", 20" (406, 457, 508 mm)	25,000 and 30,000 lb (11,340 and 13,608 kg)	MTS7-6-25 and MTS7-6-30	200-03400-2
16" and 18" (406 mm and 457 mm)		MTS7-8-25 and MTS7-8-30	200-03400-2
20" (508 mm)			200-03400-1
16", 18", 20" (406, 457, 508 mm)	35,000 and 40,000 lb 15, 876 and 18,144 kg)	MTS7-6-35 and MTS7-6-40	200-03400-1
16" (406 mm)		MTS7-8-35 and MTS7-8-40	200-03400-2
18" and 20" (457 mm and 508 mm)			200-03400-1
16" (406 mm)		MTS7-10-25 and MTS7-10-40	200-03400-2

Dock Seals and Shelters

Blue Giant Dock Seals and Shelters improve energy conservation, help preserve internal temperatures and protect products from outside contaminants.

Blue Giant offers the industry's widest array of dock seals, dock shelters, and rain shrouds. Dock applications, site criteria and facility operations vary and may require one feature more than the others. Many configurations are available from basic types of compression dock seals, standard dock shelters, inflatable seals to hybrid dock seal / shelter / inflatable designs.



Dock Seal Model	Style	Type	Recommended Door Size	Price
BGDSF / BG100	Fixed Head Pad	Compression Seal	Up to 9' Wide x 9' High	Consult Factory
BGDSC / BG200	Head Curtain	Compression Seal	Up to 9' Wide x 10' High	Consult Factory
BGDSFA / BG300	Adjustable Head Pad	Compression Seal	Up to 8' Wide x 10' High	Consult Factory
BGDSA / BG700	Full Access Soft Sided	Compression Seal	Up to 10' Wide x 10' High	Consult Factory

Dock Shelter Model	Style	Type	Recommended Door Size	Price
BGDSHS/ BG400	Stationary Rigid	Full Access Shelter	Up to 12' Wide x 12' High	Consult Factory
BGD SHR/ BG500	Retractable	Full Access Shelter	Up to 10' Wide x 10' High	Consult Factory
BGD SHF / BG600	Foam Frame Soft Sided	Full Access Shelter	Up to 10' Wide x 10' 6" High	Consult Factory
BGD SFS / BG700	Full Access Soft Sided	Full Access Shelter	Up to 10' Wide x 12' High	Consult Factory
HingeMaster J-Hook	Full Access Soft Sided	Full Access Shelter	Up to 10' Wide x 12' High	Consult Factory

Inflatable Model	Style	Type	Recommended Door Size	Price
BGD SAI / BG350	Adjustable Inflatable	Inflatable Shelter	Up to 8' Wide x 10' High	Consult Factory
BGD SHI / BG450	Stationary Inflatable	Inflatable Shelter	Up to 10' Wide x 12' High	Consult Factory
BGD SHA / BG550	Inflatable Air Frame	Inflatable Shelter	Up to 10' Wide x 10' High	Consult Factory

Rain Shroud Model	Style	Recommended Door Size	Price
BGRS	Rain Shroud	Up to 12' Wide	Consult Factory

Door Seal Repair Kit

KIT INCLUDES: Vinyl patches, thread, needle, and glue. Available in 22oz., 40oz., or 50oz. vinyl.

Description	Kit Part ID
Door Seal Repair Kit	080-900

Dock Seals Components

- Replacement Side & Head Pads
- Replacement Curtains
- Recovers
- Hardware Kits

Rain Shrouds

- Replacement Pad/Frame
- Trim Angle
- Side Support Brackets
- Fiberglass Sheeting

Dock Shelter Components

- Replacement Side & Head Curtains
- Replacement Head & Side Frames
- Bottom Draft Pads
- J-Hooks (HingeMaster)
- Fiberglass Sheeting
- Trim Angle
- Steel Guards (Stationary)/- I-Beams (Retractable)
- Hardware Kits

Inflatable Shelter Repair Kit

KIT INCLUDES: 6 pieces of 12" x 12" (305 x 305 mm) patches, thread, needle, and glue. Available in Black or Blue material, 14oz. vinyl

Description	Kit Part ID
Inflatable Shelter Repair Kit	080-901

Inflatable Components

- Replacement Header & Side Air bags
- Replacement Storage Curtains
- Replacement Side & Head Frames
- Bottom Draft Pads (Stationary)
- Torsion Springs
- Side Support Brackets (Adjustable, Air Frame)
- Fiberglass Sheeting
- Steel Guards (Stationary)

Warehouse Solutions

PVC Strip Curtains and Doors

Make your facility safer, quieter, and more energy efficient by protecting your entryways with Blue Giant PVC strip curtains!

As a leading provider of loading dock and material handling solutions, Blue Giant strives to provide customers with the most complete and innovative range of Aftermarket items on the market. In keeping with this aim, we are pleased to inform you that PVC strip curtains have now been added to our Aftermarket offerings.

Benefits of using PVC Strip Curtains:

- Can be installed in minutes
- Conserve conditioned air, even in high-activity areas
- Reduce heating and refrigeration costs
- Reduce noise levels
- Easy to clean and maintain

Why use PVC Strip Curtains:

- Energy savings and temperature control
- Safety and visibility
- Noise, dust and pollution control
- Economical and practical
- Noise, dust and pollution control
- Prevention of birds, insects and rodents

Applications:

- **Cold chain:** food processing and manufacturing, storage, logistics and distribution
- **Food service:** walk-in coolers and freezers, refrigerated display units and service entrances
- **Refrigeration:** walk-in coolers and freezers, refrigerated warehouses and refrigerated display units
- **Supermarket / retail:** walk-in coolers and freezers, refrigerated display units and rear loading doors and service entrance
- **Warehouse / industrial:** loading dock doors, interior doors and service entrance
- **Welding applications:** designed to filter the ultra-violet radiation coming from the welding process



Description	Part ID	Price
8" Wide x .080" Thick x 300' Standard Clear Roll	BG-PVC-8-080	Consult Factory
8" Wide x .080" Thick x 300' Low Temp Clear Roll	BG-PVC-8-080-LT	Consult Factory
8" Wide x .072" Thick x 150' Standard Ribbed Roll	BG-PVC-8-072-SR	Consult Factory
8" Wide x .072" Thick x 150' Low Temp Ribbed Roll	BG-PVC-8-072-LTR	Consult Factory
12" Wide x .120" Thick x 200' Standard Clear Roll	BG-PVC-12-0120	Consult Factory
12" Wide x .120" Thick x 200' Low Temp Clear Roll	BG-PVC-12-0120LT	Consult Factory
12" Wide x .108" Thick x 150' Standard Ribbed Roll	BG-PVC-12-0108-SR	Consult Factory
12" Wide x .108" Thick x 150' Low Temp Ribbed Roll	BG-PVC-12-0108LTR	Consult Factory

Bug Screen Doors

Improve ventilation and airflow by 35%

Bug screen doors create a comfortable work environment while cutting down on energy bills. Typical applications include loading bays, distribution centers, and warehouses. Blue Giant bug screen doors can help food processing and pharmaceutical locations to meet FDA and AIB requirements by eliminating access points for unwanted critters.

Product Details:

- Modular design: panels are interchangeable, enabling quick and easy repairs
- Extruded aluminum wind bars: up to 50% stronger than other stiffeners to combat high winds and negative pressure
- Breakaway bars: prevent the door from breaking if hit
- Extruded aluminum guide tracks: reduce friction and prevent aluminum dust

Mounting Styles:

- **In-Jamb:** Requires approximately 8.5" (216mm) headroom and 4.5" (114mm) of space on each side of the jamb
- **Face of Wall:** Use when no existing door is present – can be mounted inside or outside
- **Inside Stand-Off:** Mounts in front of an existing roll-up or sectional



Activation Description	Kit Part ID	Max Size (W x H)	Price
Spring-Loaded Pull Down	BSD-100	12' (3658mm) x 12' (3658mm)	Consult Factory
Chain Hoist Pull Down	BSD-200	14' (4627mm) x 14' (4627mm)	Consult Factory
In-Tube Motorized (8 to 10 Cycles/Hr; 12" per Second)	BSD-300	14' (4627mm) x 14' (4627mm)	Consult Factory
External Jackshaft (10-15 Cycles/Hr; Up to 12" per Second)	BSD-400	14' (4627mm) x 14' (4627mm)	Consult Factory
External Jackshaft (Continuous Duty; Up to 12" per Second)	BSD-500	14' (4627mm) x 14' (4627mm)	Consult Factory
Jackshaft with VFD (Up to 30" per Second)	BSD-600	14' (4627mm) x 14' (4627mm)	Consult Factory

Industrial Air Curtains

An innovative approach to climate control

Blue Giant Air Curtains provide superior environmental separation by keeping out cold winds in winter and hot breezes in summer without compromising visibility levels, ensuring that pedestrian and vehicle traffic remain safe all year round.

Walls of forced air prevent pests and airborne pollutants from infiltrating work environments, maintaining high cleanliness levels that certain applications require. Post-installation energy savings typically cover the purchase price of an air curtain within a year

Product Details:

- Aerodynamic compression chamber creates a concentrated air stream that covers the entire doorway with a solid air shield, preventing outside air infiltration while allowing people and equipment to pass freely
- Re-circulates stratified heat inside the building, reducing heating costs
- Constructed with 100% stainless steel components
- Quiet, adjustable and easy to install
- Mounting styles include flush wall mounting, standoff wall brackets with uni-strut extensions to clear door tracks, threaded rod suspension, and vertical mounting,
- If your doorway is wider than the desired model allows, two units can be mounted side by side to create a protective wall of air
- Not recommended for freezer applications



Description	Price
Industrial Air Curtain	Consult Factory

Blue Giant Guardrail Systems

Protect People and Product

Blue Giant's durable steel guardrail system is used to protect people, product, and other valuable equipment. The bolt-down guardrail systems quickly anchor into concrete.

Use our line of standard component posts and rails to design and configure a system to protect your assets.

Product Details:

- Posts are available in 15" (381mm), 30" (762mm), and 44" heights (1118mm)
- Single, double, and triple rail components are available in 48", 72", 96" and 120" widths
- Safety yellow finish stands out and reduces the chance of accidents
- Floor anchors, fasteners, and removable black caps are included



Post Components	Part ID	Includes	Price	Weight
15" High	BG60-7500-A	(1) 15" High Guardrail Post, (1) 4" x 4" Black Plastic Post Cap, (6) Post Plugs for Washdown (7/8"), (4) Anchors: 1/2" x 4-1/2" Wedge Anchors	Consult Factory	28 lbs
30" High	BG60-7502-A	(1) 30" High Guardrail Post, (1) 4" x 4" Black Plastic Post Cap, (12) Post Plugs for Washdown (7/8"), (4) Anchors: 1/2" x 4-1/2" Wedge Anchors	Consult Factory	43 lbs
44" High	BG60-7504-A	(1) 44" High Guardrail Post, (1) 4" x 4" Black Plastic Post Cap, (18) Post Plugs for Washdown (7/8"), (4) Anchors: 1/2" x 4-1/2" Wedge Anchors	Consult Factory	58 lbs

Rail Components	Part ID	Includes	Price	Weight
48" Wide	BG60-7506-A	(1) 48" Wide x 9" High Guardrail Rail, (2) Guardrail Mounting Angles, (8) NBW Assemblies: A325 Structural 1/2" x 1-1/4"	Consult Factory	37 lbs
72" Wide	BG60-7508-A	(1) 72" Wide x 9" High Guardrail Rail, (2) Guardrail Mounting Angles, (8) NBW Assemblies: A325 Structural 1/2" x 1-1/4"	Consult Factory	56 lbs
96" Wide	BG60-7510-A	(1) 96" Wide x 9" High Guardrail Rail, (2) Guardrail Mounting Angles, (8) NBW Assemblies: A325 Structural 1/2" x 1-1/4"	Consult Factory	74 lbs
120" Wide	BG60-7512-A	(1) 120" Wide x 9" High Guardrail Rail, (2) Guardrail Mounting Angles, (8) NBW Assemblies: A325 Structural 1/2" x 1-1/4"	Consult Factory	92 lbs

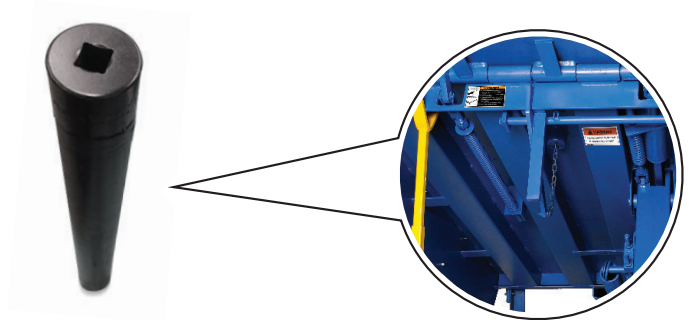
Service Technician Accessories

Tools designed for use by service technicians out in the field.

Spring Socket Tool

When it comes to removing or adjusting dock springs, safety is always a concern. The spring socket tool is designed to keep employees safe when removing or adjusting springs on a mechanical dock leveler.

Speed up your main spring adjustments quickly and efficiently with our new 15" long x 1-1/8" deep (381 x 29 mm) socket used for adjusting or removing main springs on all A & U series mechanical dock levelers. This tool is designed to fit a 1/2" (51 mm) drive socket wrench. With its long depth, it allows for continuous adjustments without the need to remove the socket.

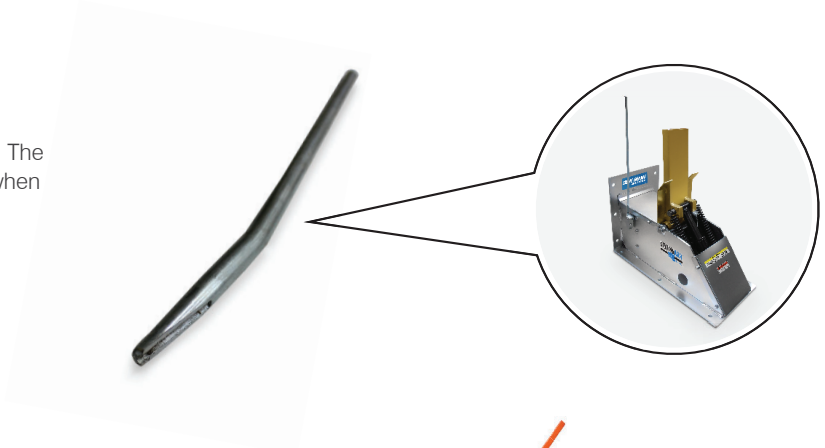


Description	Part ID
Socket, Spring Tool	223-5024

Spring Removal Tool

When it comes to removing springs, safety is always a concern. The TL85 spring removal tool is designed to keep employees safe when removing or adjusting springs on a TL85 vehicle restraint.

Description	Part ID
Spring Removal Tool for TL85	51-009053



Portable Maintenance Safety Stand

Reduces the risk of employee injury and insurance / legal issues.

PRODUCT DETAILS:

- Designed for easy use by service technicians during repair and maintenance procedures
- Can be used with dock levelers and scissor lifts

Description	Part ID
Safety Stand	796-711
Safety Stand / Lift Products	769-710-1



Manual Pallet Jacks

Tools designed for use by service technicians out in the field.

FPT-55 Manual Pallet Jack

NOTE: Only available in USA

A perfect choice for customers seeking an inexpensive yet reliable medium-duty hand pallet truck. 5,500 lb (2,495 kg) capacity.

PRODUCT DETAILS:

OPERATION:

- 180 degree operational arc
- Thirteen full strokes to reach maximum elevated height of 7.8" (198 mm)
- Control handle has three position (raise / neutral / lower) fingertip controls
- Spring loaded handle returns to upright position automatically

FORKS / CHASSIS:

- Fork size 27" x 48" (686 x 1219 mm) standard, 20.5" x 48" (521 x 1219 mm) optional
- Tapered forks with ramped tips allow for easy pallet entry and exit
- Rugged heavy duty frame
- Adjustable push rods allow for individual adjustment capability
- Frame is powder coat paint
- Hangers are constructed of cast iron for greater strength and longevity
- Easy maintenance
- Approximate shipping weight – 180 lb (82 kg)

HYDRAULICS:

- Quality pump design complete with a special lowering valve allowing controlled rate of descent, and an overload by-pass valve

EPT-55 Manual Pallet Jack

An excellent heavy-duty hand pallet truck for customers who want performance and value. 5,500 lb (2,495 kg) capacity.

PRODUCT DETAILS:

OPERATION / HANDLE:

- Ten full strokes to reach maximum elevated height of 7.8"
- 200 degree operational arc
- Control handle has three position (raise / neutral / lower) fingertip controls
- Foam cushioning is standard
- Spring loaded handle returns to upright position automatically
- Ergonomically designed and free of pinch points

FORKS / CHASSIS:

- Fork size 27" x 48" (686 x 1219 mm) standard, 20.5" x 48" (521 x 1219 mm) optional
- Rugged heavy duty frame
- Tapered forks and entry and exit rollers allow for smooth pallet handling
- Frame is powder coat paint
- Adjustable push rods allow for individual adjustment capability
- Helper rollers for easy exit and entry of pallets
- Hangers are constructed of cast iron for greater strength and longevity
- Easy maintenance - grease fittings and bushings at all pivot points



Description	Part ID
Manual Pallet Jack 5500 lb (2,495 kg)	FPT55/27X48

WARRANTY:

- One year structural and one year hydraulic pump warranty



Description	Part ID
Manual Pallet Jack 5500 lb (2,495 kg)	EPT55/27X48

HYDRAULICS:

- Galvanized hydraulic pump includes an overload relief valve and braking can be actuated by both hand and foot controlled release

WARRANTY:

- Two year structural and two year hydraulic pump warranty

EPT-55-SS Stainless Steel Manual Pallet Jack (special order)

The EPT-55-S features 100% stainless steel pump, handle, frame and components construction, and polyurethane wheels and rollers offering maximum corrosion resistance in chemical, wet or cold applications.

PRODUCT DETAILS:

OPERATION / HANDLE:

- 200 degree pivot action, single bearings and "ball-thrust" steering
- Control handle has three position (raise / neutral / lower) fingertip controls
- Spring loaded handle returns to upright position automatically
- Foam cushioning is standard
- Ten full strokes to reach maximum elevated height of 7.8" (198.12 mm)
- Ergonomically designed and free of pinch points

FORKS / CHASSIS:

- Tapered forks and entry and exit rollers allow for smooth pallet handling
- Adjustable push rods allow for individual adjustment capability
- Fork size 27" x 48" (686 x 1219 mm) standard, 20.5" x 48" (521 x 1219 mm) optional
- Easy maintenance - grease fittings and bushings at all pivot points
- Rugged heavy duty frame
- Stainless steel hangers are constructed of steel for greater strength
- Helper rollers for easy exit and entry of pallets

HYDRAULICS:

- Complete with a special lowering valve allowing controlled rate of decent and an overload by-pass valve

WARRANTY:

- Two year structural and one year hydraulic pump warranty



Description	Part ID
Stainless Steel Manual Pallet Jack	EPT55/27X48-SS

Paint Colors



Standard Blue

Description	Part ID
Standard Blue	039-196



Battleship Grey

Description	Part ID
Battleship Grey	039-197



Black Gloss

Description	Part ID
Black Gloss	039-130



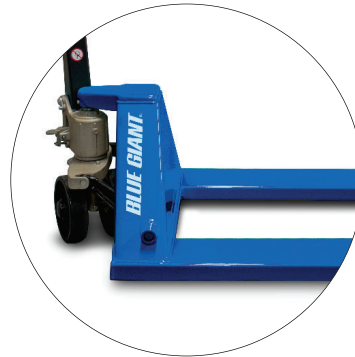
Safety Yellow

Description	Part ID
Safety Yellow	039-198



Electric Pallet Trucks

Description	Part ID
Electric Pallet Trucks	039-011



Manual Pallet Trucks

Description	Part ID
Manual Pallet Trucks	039-012

Notes



Notes

Notes

