

BLUE GIANT Interlock Chock™



AN INTEGRATED SAFETY COMMUNICATION SOLUTION

Blue Giant Interlock Chock™ is an intelligent wheel chock system that provides communication between loading dock personnel and trailer operators. Designed with a unique signalling system, the chock handle contains high visibility LED lights and an integrated alarm, communicating to the operator that the Interlock Chock is engaged and secure.

Seamless integration alerts interior personnel that the trailer is chocked correctly and safe for loading and unloading. Avoid trailer creep, premature departures, and accommodate a variety of vehicles with or without an ICC bar. Blue Giant Interlock Chock™ creates a safer environment, protecting people, facilities, and equipment.



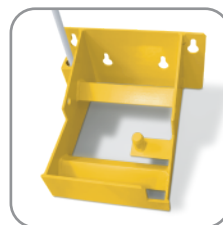
Includes: Interlock Chock assembly, dock lip sensor, door sensors (2), Blue Genius touch control, exterior traffic light and sign.



- **Robust aluminum chock** is high strength and securely contours trailer wheel in all weather conditions.



- **Stainless steel sawtooth plate** firmly grips driveway, preventing movement of chock under wheel engagement. Non-skid plate can be rotated for product longevity.



- **Submersible** chock assembly works in all weather conditions, IP67.

- **Ultrasonic sensor** detects chock placement and communicates to the control panel.

- **Fibreglass cable pole** keeps cable off traffic path, preventing damage and allows clearance for easy snow removal.

- **Durable steel cradle** designed with an open concept and installed above grade; will not trap snow and debris.

- **Proximity sensor** detects home position when chock is in cradle.

- **PowderCoat™** safety yellow is an effective rust proof solution that prolongs the equipment's life.

BLUE GIANT[®] INTERLOCKING SOLUTION

Blue Genius™ touch control stations provide the highest level in loading dock safety, productivity, and communication. A single control station interlocks an entire loading dock system, providing a safe and simplified operation from one central location.

- The sequence of equipment operation is properly interlocked to optimize safety and productivity. Operating sequences can be customized to suit application needs.
- NEMA4X / IP65 rated polycarbonate enclosure is washdown and corrosion resistant, making it compatible with facilities that must adhere to FDA's high cleaning standards, such as pharmaceutical and chemical handling locations.
- An interior and exterior LED lights communication system continually displays safety conditions to dock personnel and truck drivers, reducing the risk of accident or injury.
- A STOP button allows the operator to halt or limit equipment motion in the event of a potential emergency.
- Built-in audible alarm alerts operators to certain potentially unsafe conditions.
- Audible touch buttons and numeric keypad are flat-surface in design, and will not break off or wear down with extended use. All buttons provide instant sound feedback to user input.
- The large LCD screen displays clear and accurate instructions for the operation and troubleshooting of all connected dock equipment. Multi-language support available.
- The microprocessor based design makes operational upgrades quick and easy. All function expansions are done via software: no need to replace the panel.
- Printed circuit board technology provides trouble-free wiring, eliminating performance issues associated with the deterioration of mechanical switches and wires.

