

# BLUFF



## PRODUCT GUIDE



**INTEGRATED WAREHOUSE SOLUTIONS®** represents the coming together of quality known brands within the material handling industry to serve the needs of our customers and prospects on an international basis. As a solutions provider, our goal is to create, manufacture and market products that exceed your expectation. Our products focus on making the work environment both safer and more efficient. As you evaluate your material handling needs, we will strive to earn your business with quality workmanship and the dedication of our associates.

**BLUFF® MANUFACTURING** is the innovative leader in the fabrication and design of high-quality dock and warehouse equipment. For over 80 years, Bluff Manufacturing has been the top national provider of steel and aluminum dock boards and plates, edge of dock levelers, portable yard ramps, mezzanines, carts and warehouse safety equipment.

**NORDOCK®** manufactures and distributes a full line of loading dock equipment, including pit-style, vertical storing and telescoping lip dock levelers, vehicle restraints, dock lifts and in-plant lifts, truck levelers, dock seals and shelters, and a comprehensive line of accessories. In addition, NORDOCK® has the unique capability to design and manufacture specialty engineered products for loading dock, safety, and lift applications.

**WESCO® INDUSTRIAL PRODUCTS** is a full line manufacturer and distributor of a wide range of standard and custom products. Material handling professionals have relied on the quality and durability of WESCO's products for over 70 years. WESCO's primary lines include drum handling, hand trucks and carts, lift equipment as well as a variety of associated dock and material handling products.

Our local representatives are ready to take your call.



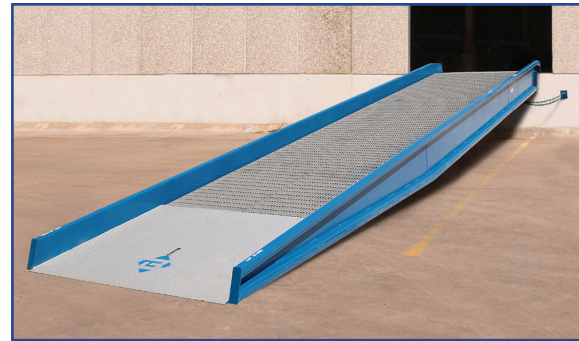
- YARD RAMPS**
  - Portable Yard Ramp, Stationary Yard Ramp, Options ..... 4
- PORTABLE DOCK / PLATFORM**
  - Portable Dock/Platform, Options ..... 5
- SPECIALTY RAMPS**
  - Mini Ramp, Container Ramp, Walk Ramp, Crossover Ramp ..... 6
- BRIDGE THE GAP**
  - Crossover Bridge, Rail Board ..... 7
- DOCK BOARD SELECTION GUIDE**
  - Selection Guide, Portability Options ..... 8
- STEEL DOCK BOARDS**
  - Models T, TFL, C, TNB, SC and Speedy Board ..... 9
- ALUMINUM DOCK BOARDS & PLATES**
  - Models AC and BC, Model ATD ..... 10
- SPECIALTY DOCK PLATES**
  - Spring Loaded Dock Plate, Gas Cylinder Plate ..... 11
- DOCK LEVELERS**
  - Edge of Dock Leveler and Lo-Dock Leveler ..... 12
- WHEEL RISERS & TRUCK RISERS**
  - Aluminum and Steel Wheel Risers, Steel Truck Risers ..... 13
- GUARD RAILS**
  - Tuff Guard®, Modular Protective Barrier ..... 14
- RACK PROTECTION**
  - Rack Guard, Post Protector, Guide Rail ..... 15
- DOCK DOOR SAFETY**
  - Door Guard, Goal Post, Bollard, Barrier Gate ..... 16
- WAREHOUSE SAFETY**
  - Pipe Guard, Corner Guard, Building Column Guard, Machine Guard ..... 17
- MEZZANINES & GATES**
  - Mezzanine, Slide Gate, Pivot Gate, Swing Gate ..... 18
- OTHER STEEL STRUCTURES**
  - Stairway and Landing, Ladder, Conveyor Crossover ..... 19
- CANTILEVER RACKS** ..... 20
- CARTS, STORAGE & HANDLING**
  - Packing Box Rack, Order Picker Cart, Custom Carts ..... 21
- OTHER STORAGE & HANDLING**
  - Keg and Wine Flow Rack Inserts, Slab Handling, Sheet Rock Dolly ..... 22
- CUSTOM PRODUCTS** ..... 23
- WAREHOUSE MAP** ..... 24

# YARD RAMPS



## PORTABLE YARD RAMP Model SYS

- Ground-to-truck application
- All-welded steel construction with steel grating
- Standard capacities from 16,000 to 30,000 pounds
- 36' design includes 6' level-off
- Widths from 70" to 96"
- Higher capacities and custom designs available
- Beveled approach provides a smooth transition
- Includes full undercarriage with solid 18" rubber tires
- Safety chains included to secure Yard Ramp to trailer
- Option of tow bar or ramp clamp when ordering
- Double-action hydraulic pump allows for smooth and quick raise of the front lip to the proper trailer height
- Options include: handrails, edge of dock or pit leveler, platform connection, ladder or stairs, hinged lip, fixed or adjustable legs, pneumatic wheels, caster jack legs
- Manufactured in 7 working days and shipped from TX
- Standard models stocked in GA and MD for quick shipment



## STATIONARY YARD RAMP Model SYSNU

- Ground-to-dock ramp
- All-welded steel construction with steel grating
- Standard capacities from 16,000 to 30,000 pounds
- Fixed model is standard
- 30' all-incline design
- Widths from 70" to 130"
- Higher capacities and custom designs available
- Beveled approach provides a smooth transition
- Safety chains and chain brackets included to secure Yard Ramp to a dock or Steel Platform
- Options include: handrails, recessed curbs, dock extension, platform connection, undercarriage for portability
- Manufactured in 7 working days and shipped from TX



# PORTABLE DOCK / PLATFORM



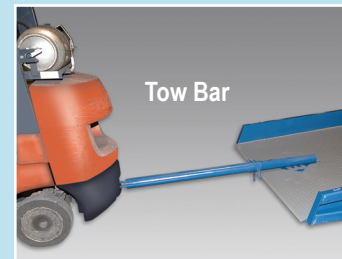
## PORTABLE DOCK / PLATFORM Model SP

**Bluff Steel Platforms** are an efficient way to create a loading dock when there's not one available on site for shipment deliveries at a warehouse or railway facility. These can be used as a free-standing setup, or can be used in conjunction with a yard ramp to increase loading capabilities. Steel Platforms come in either a fixed height or with adjustable legs depending your application requirements.



- All-welded steel construction
- Diamond tread travel surface
- Standard capacities from 16,000 to 30,000 pounds
- Higher capacities and custom designs available
- Options include: handrails, edge of dock or pit levelers, hinged lip, fixed or adjustable legs, yard ramp connection, ladder or stairs
- Manufactured in 10 working days and shipped from TX

## OPTIONS



## OPTIONS



# SPECIALTY RAMPS



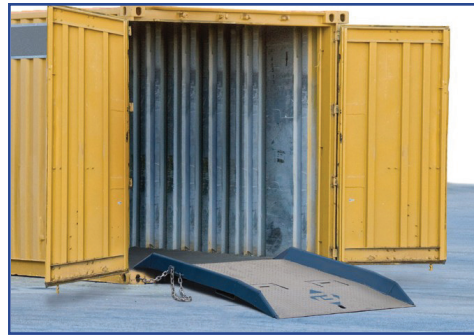
## MINI RAMP Model MR

- Great for ground-to-dock loading with low dock height
- All-welded steel construction with steel grating
- Standard capacities from 16,000 to 30,000 pounds
- 6" tall curbs on each side serve as runoff protection
- Standard widths of 70" or 84"
- 15' long ramp services dock heights from 17" to 30"
- 18' long ramp services dock heights from 20" to 32"
- Higher capacities and custom designs available
- Safety chains included to secure Mini Ramp to dock
- Add MRSJ screw jack kit for portability. Kit includes two screw jacks with rigid steel casters mounted at the ramp's balance point
- Handrails optional
- Manufactured in 7 working days and shipped from TX



## CROSSOVER RAMP Model COR

- Safely traverse over pipes, hoses or cables
- All-welded steel construction
- Standard capacities from 5,000 to 30,000 pounds
- Curbs optional for runoff protection
- Higher capacities and custom designs available
- Can be modified for fracking site applications
- Worksheet required



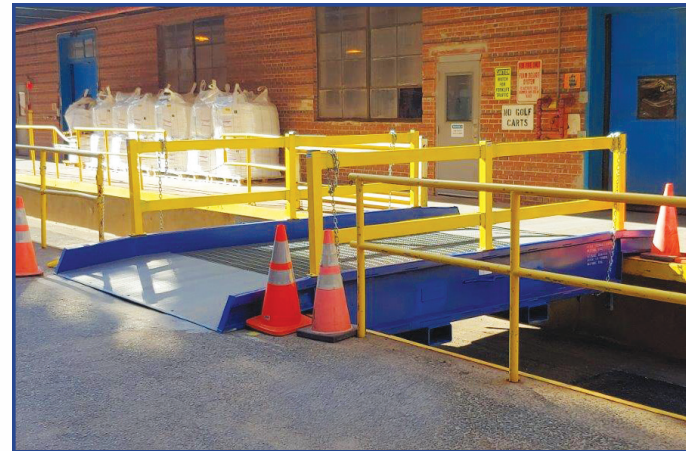
## CONTAINER RAMP Model CR

- Allows smooth transition from ground to bed of shipping container
- All-welded steel construction
- Standard capacities from 15,000 to 30,000 pounds
- Full width stiffener bumps up against the container for stability
- Locking chains included to lock ramp into place
- 4" tall curbs on each side serve as runoff protection
- Widths starting at 60"
- Higher capacities and custom designs available
- Manufactured in 5-7 working days and shipped from TX
- Standard models stocked in CA for quick shipment



## WALK RAMP Model WR

- Lightweight aluminum construction
- Hook or Apron options
- Lengths from 3' to 16'
- Widths of 29" or 39"
- Capacities from 500 – 3,000 lbs
- Not intended for use with powered equipment or pallet jacks
- Ships in 5-7 working days from factory in MI



## CROSSOVER BRIDGE Model COB

- Bridge the gap between ditches, waterways, uneven topography or multiple levels in a warehouse
- All-welded steel construction with steel grating
- Standard capacities from 16,000 to 30,000 pounds
- Portability options on some models
- 8" tall curbs for runoff protection

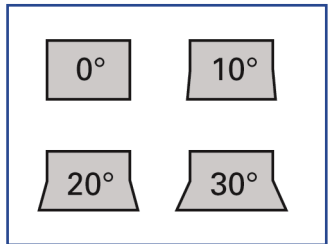


## RAIL BOARD Model R

- For use with transitioning between a dock and rail car for safe loading
- All-welded steel construction
- Standard capacities from 15,000 to 90,000 pounds
- Heavy duty locking rings for secure positioning
- Recessed lifting loops are standard
- Worksheet required
- Options: 10, 20 or 30 degree flared dock side width, and lifting chains instead of loops
- Manufactured in 10-12 working days and shipped from TX



Locking Ring Design



Flare Options



Understructure

# BRIDGE THE GAP



- Option for handrails – for gap depths of more than 48", handrails are recommended
- Higher capacities and custom designs available
- Drawbridge design capability
- Worksheet required for proper design
- Manufactured in 7-10 working days and shipped from TX

# DOCK BOARD SELECTION GUIDE

## SELECTION GUIDE

When making dock board and/or dock plate selections, consider the extremes rather than the averages.

### CAPACITY

#### Plates

- Weight of equipment and heaviest load

#### Boards

- Capacity rated for single-shift operation at a 3 mile per hour maximum rate of travel
- Stackers and other narrow aisle loaders should not be used on a dock board
- Paper roll clamp and multi-shift loading add 5,000 pounds to the board capacity

### Length

To determine the proper length of a dock board/ plate, three items are required:

- Dock height (D)
- Height of highest truck and lowest truck (T)
- Gradeability of loading equipment used.

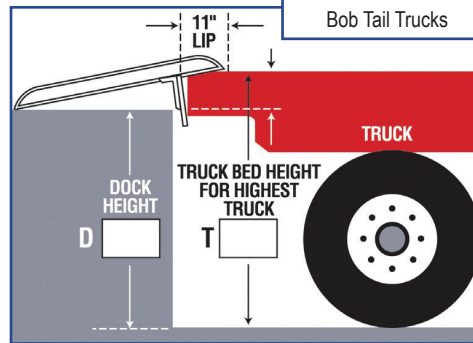
### Width

Bluff recommends a minimum product width of 12" to 18" wider than the overall width of the vehicle or pallet used.

CAPACITY SELECTION GUIDE		
4-WHEEL FORKLIFT LIFTING CAPACITY	3-WHEEL FORKLIFT LIFTING CAPACITY	BOARD CAPACITY REQUIRED
2,000 - 3,000 lbs	2,000 lbs	10,000 lbs
3,000 - 4,000 lbs	2,500 lbs	13,000 lbs
5,000 lbs	3,000 3,500 lbs	15,000 lbs
5,000 - 6,000 lbs	4,000 - 5,000 lbs	20,000 lbs

### MAXIMUM TRAILER HEIGHT SERVED

Truck Type	Serve Height
Freight Line Trailers	46" - 56"
Flatbed Trailers	50" - 60"+
Bob Tail Trucks	46" - 48"
Containers	56" - 62"
Bob Tail Trucks	50" - 60"



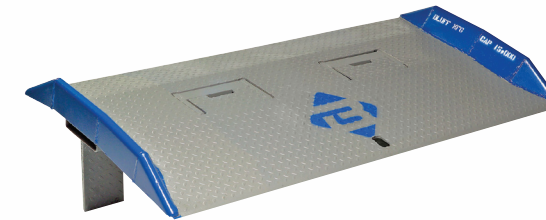
# STEEL DOCK BOARDS

Rated for forklift use, **Bluff Steel Dock Boards** provide an easy transition from dock to truck while aiding in safely loading and unloading freight shipments. All steel dock boards are manufactured and tested in compliance with ANSI Standard MH30.2 and are OSHA 1910.26 compliant. Manufactured in 5-7 working days and shipped from TX. Standard models stocked in CA, WA, PA, MD, GA and NC for quick shipment.



**MODEL T**  
Pin Style

- Capacities from 15,000 to 40,000 lbs
- Two four-hole pin pockets placed on each edge
- Above and below dock loading
- Fold-down lifting loops
- Widths from 60" - 84"
- Lengths from 48" - 120"



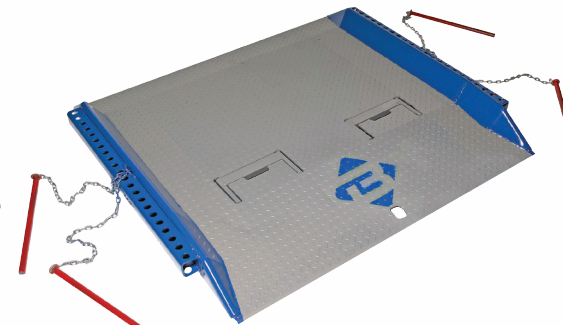
**MODEL TFL**  
Fixed Legs

- Capacities from 15,000 to 40,000 lbs
- Fixed (locking) leg design
- Above dock loading only
- Fold-down lifting loops
- Widths from 60" - 84"
- Lengths from 48" - 120"



**SPEEDY BOARD™**  
Scoop Style

- Capacities from 10,000 to 40,000 lbs
- Fork cutouts on leading edge - no need to leave forklift
- Fixed (locking) leg design
- Above dock loading only
- Widths from 60" - 84"
- Lengths from 48" - 120"



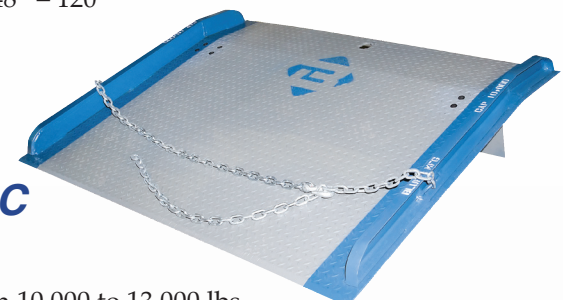
**MODEL C**  
Full Length  
Pin Pockets

- Capacities from 15,000 to 40,000 lbs
- Full length pin pockets on each side for a dual-pin locking system
- For difficult trailer-to-dock positions
- Above and below dock loading
- Widths from 60" - 84"
- Lengths from 48" - 120"



**MODEL TNB**  
No Dockside Bend

- Capacities from 15,000 to 40,000 lbs
- Single-bend design
- Fixed (locking) leg design
- Lifting chains
- Above dock loading only
- Widths from 60" - 84"
- Lengths from 48" - 120"



**MODEL SC**  
Light Duty

- Capacities from 10,000 to 13,000 lbs
- Light duty steel option
- Fixed (locking) leg design
- Lifting chains
- Above dock loading only
- Widths from 60" - 84"
- Lengths from 36" - 96"

## PORTABILITY OPTIONS



**EZ-Roll Attachment**

One person positioning without the use of a forklift. Telescoping handle stores away while board is in use. Only available for aluminum models.



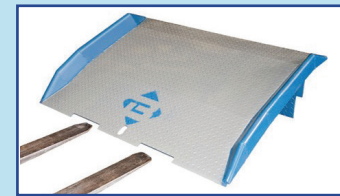
**Lifting Chains**

For use with aluminum or steel boards.



**Lifting Loops**

For use with steel board models T and TFL.



**Speedy Board® Cutouts**

Allows the forklift driver the ability to move, place, and retrieve the board without exiting the forklift. For aluminum and steel dock boards only. Suited for forklifts with tapered, tilt-able tines.

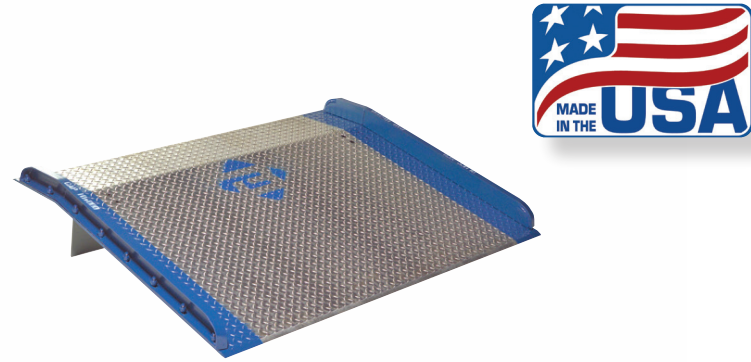


# ALUMINUM DOCK BOARDS & PLATES

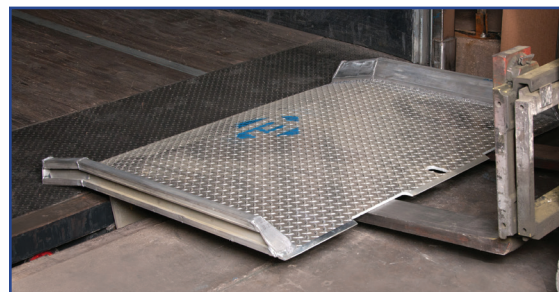


## MODELS AC and BC

- Ideal for low to medium volume dock loading applications
- Designed for use with forklifts or pallet jacks
- Aluminum with bolted steel curbs

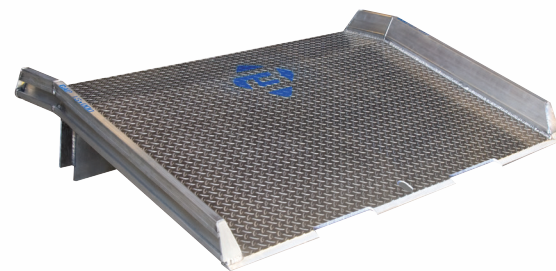


- Available in 10,000 lb or 15,000 lb capacity
- Widths from 54"-84" and lengths from 36"-96"
- Options include: EZ Roll Handles, Lifting Chains, Speedy Board Cutouts
- Manufactured in 1 working day and shipped from TX
- Standard models stocked in CA, WA, PA, MD, GA and NC for quick shipment



## MODEL ATD

- Good in environments where sparking or corrosion are concerns
- All welded aluminum construction

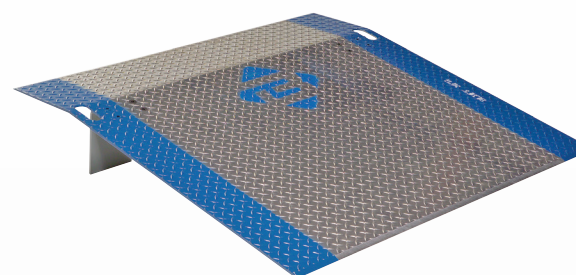


- Available in 10,000 lb or 15,000 lb capacity
- Speedy Board cutouts for lifting
- Widths from 54"-96" and lengths from 36"-96"
- Options include: lifting chains or EZ Roll Handles
- Manufactured in 5 working days and shipped from TX



## DOCK PLATES

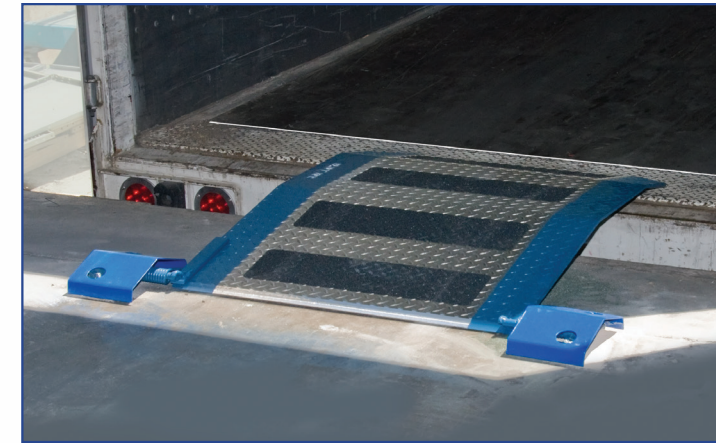
- For use in low to medium loading applications
- Not rated for forklift use – only for use with hand trucks, dollies or pallet jacks
- Aluminum with bolt-on steel legs



- Hand holes are standard for portability
- Widths from 36" to 72" and lengths from 24" to 84"
- Options include: EZ Roll Handles or loop handles
- Manufactured in 1 working day and shipped from TX
- Standard models stocked in CA, WA, PA, MD, GA and NC for quick shipment

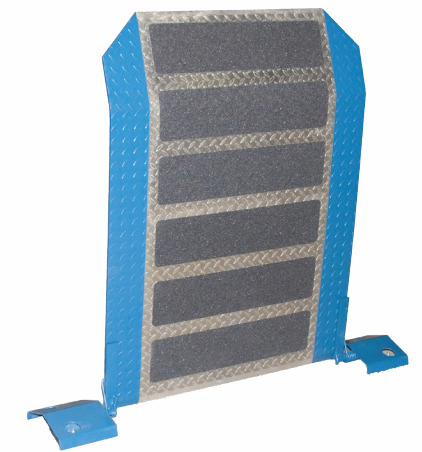


# SPECIALTY DOCK PLATES



## SPRING LOADED DOCK PLATE Model SL

Bluff's Spring Loaded Dock Plate (SL Plate) is an ideal solution for loading applications involving hand trucks and dollies, and is typically used by customers in the bakery, beverage and snack distribution industries. Not for use with powered equipment. Each SL Plate is site-specific and requires a completed worksheet to design.

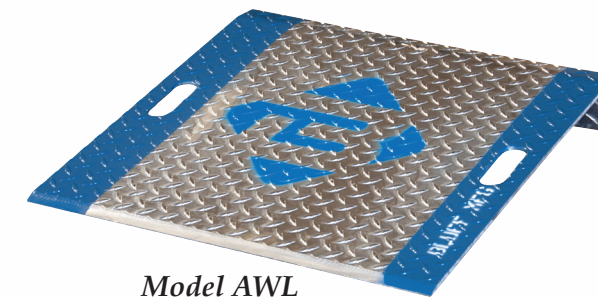


- Aluminum construction
- Actuated by hand or foot
- Stores vertically
- Widths from 30" to 72"
- Lengths from 36" to 72"
- Options include: kick plate covers, traction tape
- Worksheet required
- Manufactured in 5 working days and shipped from TX

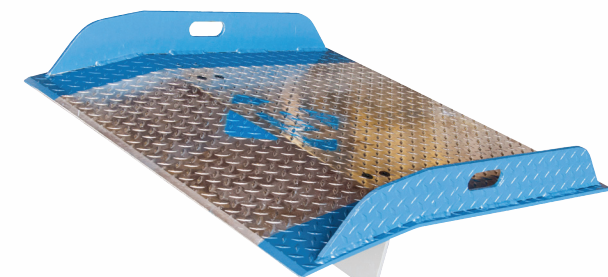


## ALUMINUM GAS CYLINDER PLATE Models AWL and AWC

Bluff's AWL and AWC Aluminum Plates are specially designed for the safe transport and distribution of industrial, medical and specialty gases. They are used as ramps for gas cylinders, while preventing damage to the cylinder and minimizing the risk of personnel injury. These are made of 3/8" aluminum diamond plate, and are light enough to be easily maneuvered by hand.



Model AWL



Model AWC

- All aluminum construction
- Hand holes for easy lifting
- AWL model has welded full-length leg
- AWC model has runoff curbs
- Widths from 30"-48"
- Lengths from 24"-60"
- Etched data tag optional
- Manufactured in 2 working days and shipped from TX

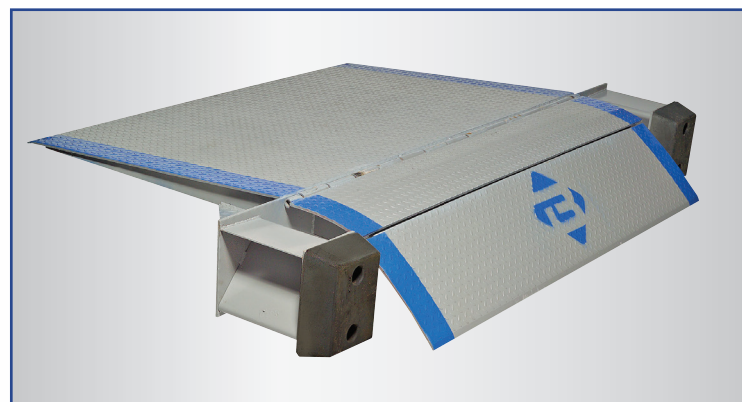


## DOCK LEVELERS



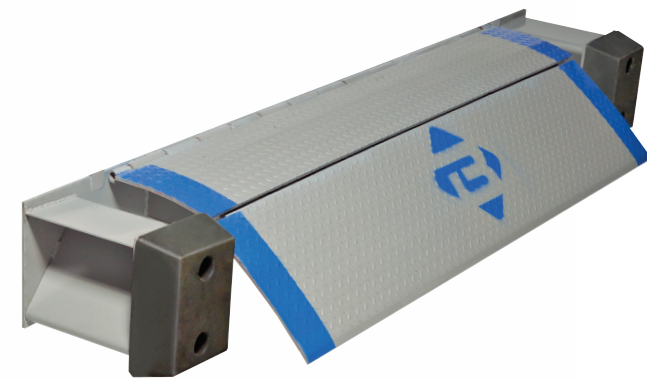
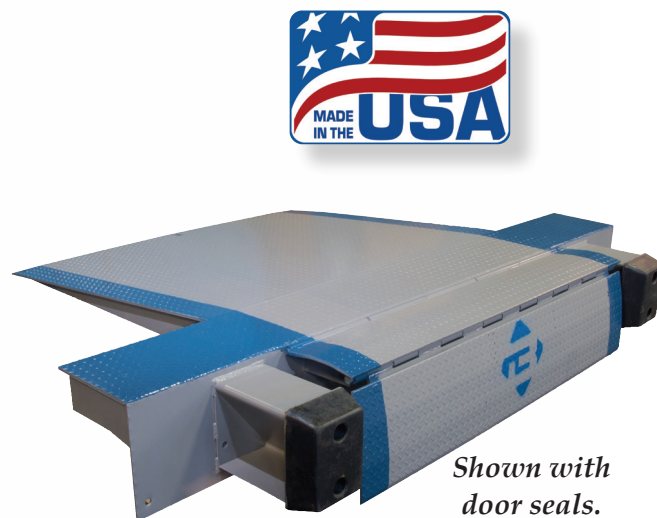
### EDGE OF DOCK LEVELER Model EP

- Correct the height difference between a dock and trailer
- Working range of 5" above and 5" below dock
- Capacities from 20,000 to 30,000 lbs
- Available widths of 66", 72" and 78"
- Self-Storing handle
- Bumper and bumper blocks included
- Conforms to ANSI MH30.1 Standards
- Optional add-ons include: anchor kit, approach plate, longer lip for refrigerated trucks, steel faced bumpers and hydraulic package
- Manufactured in 7 working days and shipped from TX
- Standard models stocked in CA, WA, PA, MD, GA and NC for quick shipment



### LO-DOCK LEVELER Models LD and DS

- Used to raise up a dock height anywhere from 3" to 20"
- Capacities from 20,000 to 30,000 lbs
- Available widths of 66", 72" and 78"
- Self-Storing handle
- Easily installed onto any concrete dock – no welding required
- Bumper and bumper blocks included
- Optional add-ons include: door seals, runoff curbs, anchor kit, longer lip for refrigerated trucks, steel faced bumpers and hydraulic package
- Worksheet required for Lo-Dock Levelers needing door seals
- Conforms to ANSI MH30.1 Standards
- Manufactured in 7 working days and shipped from TX

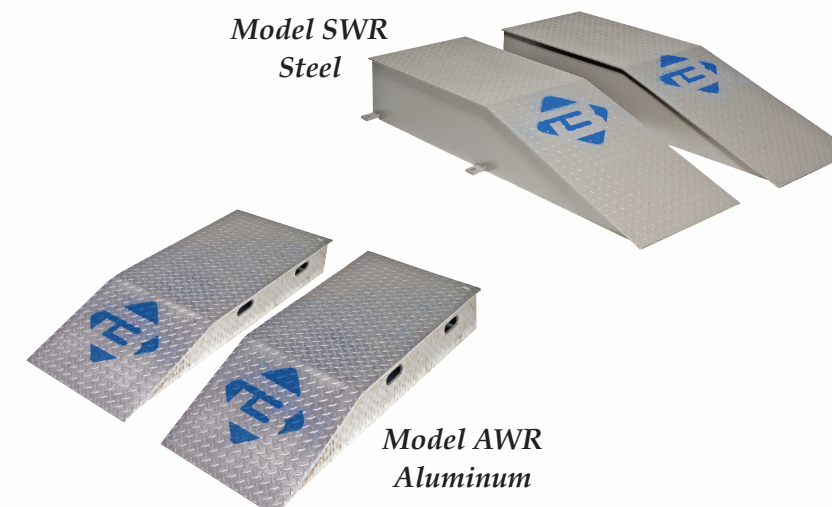


## WHEEL RISERS & TRUCK RISERS



### WHEEL RISERS Models SWR and AWR

- Eliminate unsafe below-dock loading conditions
- Raises up back wheels of truck
- Steel Risers are 40,000 lbs capacity per pair
- Aluminum Risers are 30,000 lbs capacity per pair
- Anchor tabs standard for steel models
- Hand holes standard for aluminum models
- Heights from 3" to 12"

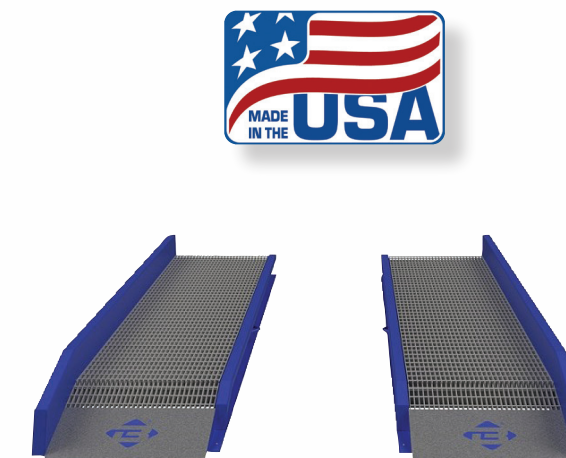


- Sizes to accommodate single or tandem axles, as well as single or dual tires
- Options include: fork pockets/notches, lifting bar, runoff curbs
- Worksheet required
- Manufactured in 6 working days and shipped from TX



### TRUCK RISERS Model TR

- Raise up entire truck to meet dock height
- Steel construction with steel grating
- 40,000 lbs capacity per axle
- Heights from 6" to 24"
- Available as one piece ramp or a set of risers



- 8" runoff curbs are standard
- Holes for anchoring
- Lengths to accommodate any type of truck
- Worksheet required
- Manufactured in 7-10 working days and shipped from TX

# GUARD RAILS



## TUFF GUARD® SAFETY RAILING Model TG

- Rated to withstand forklift impact of up to 10,000 lbs at 6 mph
- 4" x 4" x 3/16" structural steel square tubing posts in heights of 18", 30" or 42"
- Formed 10 gauge steel rails in lengths from 1' to 12'
- All installation hardware included

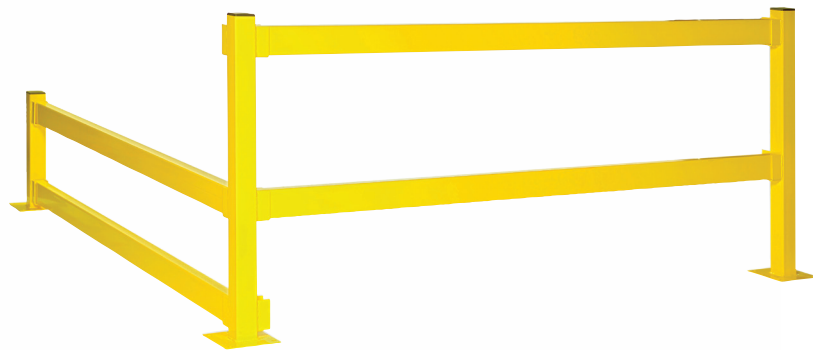


- Optional: lift-out attachments for rails, 45 Degree Angle attachment for posts
- Safety Yellow powder coat finish is standard, with other colors available upon request: orange, blue, black and grey
- Manufactured in 5-15 working days and shipped from TX



## MODULAR PROTECTIVE BARRIERS Model MPB

- For pedestrian use: create in-plant walkways or safety barriers
- Lift-out rail design allows easy access to areas as needed
- 20" or 42" high posts (single or double high railing)
- 2" x 4" x 11 gauge steel tubing rails



- 3" x 3" x 11 gauge steel tubing columns
- Installation hardware not included
- Floor rail option available
- Safety Yellow powder coat finish is standard, with other colors available upon request: orange, blue, black and grey
- Manufactured in 5-15 working days and shipped from TX

# RACK PROTECTION



## RACK GUARD Model RG

- End of Rack protection
- Heavy duty 3/8" thick steel
- 4"x6" angle size
- Wrap-around design protects both the rack ends and columns
- Bolted to floor for extra stability
- Anchor kit sold separately
- Options: left end, right end or double end columns, and extension pieces
- Safety Yellow powder coat finish is standard, with other colors available upon request: orange, blue, black and grey
- Manufactured in 5-15 working days and shipped from TX
- Standard models stocked in PA and NC for quick shipment



## GUIDE RAIL Model GR

- Standard rails are 3/8" thick steel in a 3"x4" angle size
- Great for narrow aisle applications
- Comes in up to 20' length
- Custom angle sizes, lengths and designs available
- Hole size and spacing specified by customer per project requirements
- Anchors not provided
- Optional: mitered end
- Lengths up to 12' are powder coated. Safety yellow is standard with other colors available



## POST PROTECTORS Model PO

- Rack post protection
- Standard height options: 12", 18" and 24"
- Available steel thickness options: 1/4", 3/8" and 1/2"
- Standard opening fits around rack post up to 4" wide
- Baseplates have four 9/16" mounting holes – anchors not included



- Safety Yellow powder coat finish is standard, with other colors available upon request: orange, blue, black and grey
- Optional: oversized opening for wider rack posts
- Manufactured in 5-15 working days and shipped from TX
- Standard models stocked in PA, MD, GA and NC for quick shipment

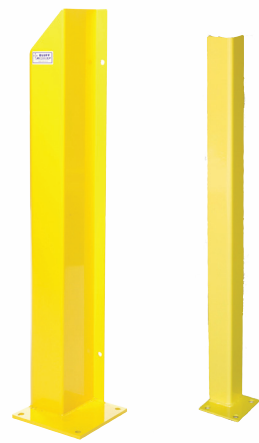


# DOCK DOOR SAFETY



## DOOR GUARDS Model DG

- Protect overhead door tracks from damage
- Chamfered edge reduces risk of hand injury when lowering door
- Wrap-around track design allows for free door operation
- Standard model projects 6" from wall
- Anchors to both wall and floor
- Columns are 3/16" thick steel
- Baseplate is 1/2" thick steel with 5/8" holes
- Hardware not included
- Safety Yellow powder coat finish is standard, with other colors available upon request: orange, blue, black and grey
- Options: no baseplate, bigger projection, 3"x3" angle design (DG48-3)
- Manufactured in 5-15 working days and shipped from TX
- Standard models stocked in CA, PA and NC for quick shipment



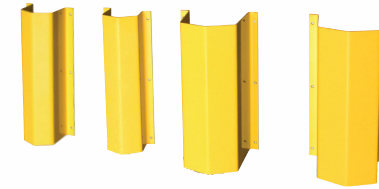
## BOLLARD Model SRB

- Easy installation – no concrete work required
- 6" I.D. schedule 40 pipe
- 42" height
- Black plastic removable cap
- 1/2" x 8" x 8" baseplate with 3/4" mount holes
- Anchors included
- Options: welded steel cap, 4" diameter pipe, no baseplate, galvanized
- Safety Yellow powder coat finish is standard, with other colors available upon request: orange, blue, black and grey
- Manufactured in 5-15 working days and shipped from TX.
- Standard models stocked in CA, PA, GA and NC for quick shipment



## PIPE GUARD Model PG

- Protect exposed pipes, conduits, ducts and downspouts from damage
- 36" tall, wall-mounted models are standard
- 3/16" thick steel
- Designed for pipe diameters from 2" to 12"
- Hardware not included
- Options: floor, column or corner mounted, flat front
- Worksheet available for unique applications
- Safety Yellow powder coat finish is standard, with other colors available upon request: orange, blue, black and grey
- Manufactured in 5-15 working days and shipped from TX



# WAREHOUSE SAFETY



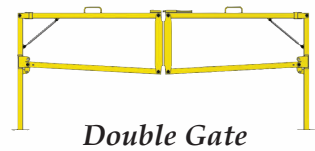
## BUILDING COLUMN GUARDS Model BCG

- Protect building columns from damage
- Standard models are 42" tall, floor-mounted
- 3/16" or 1/4" thick steel
- Designed for column sizes from 4" to 24"
- Rated to withstand forklift impact of up to 10,000 lbs at 6 mph
- Shipped in two pieces – fasteners included for assembly
- Floor anchors not included
- Safety Yellow powder coat finish is standard, with other colors available upon request: orange, blue, black and grey
- Manufactured in 5-15 working days and shipped from TX



## GOAL POST Model DGPP

- Protects overhead doorways from damage
- Available in 4" or 6" square tubing options
- Standard models protect up to 12' x 12' doors
- Fasteners included for assembly
- Offset baseplates provide more service area
- Anchoring hardware not included
- Safety Yellow powder coat finish is standard, with other colors available upon request: orange, blue, black and grey
- Options: core drilled posts, custom sizes
- Manufactured in 5-15 working days and shipped from TX



Double Gate



Single Gate

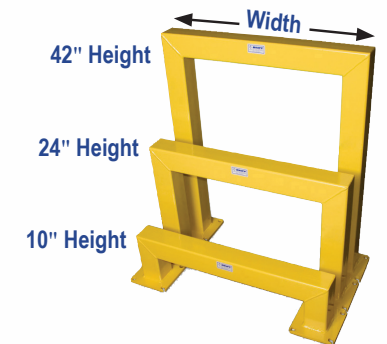
## BARRIER GATES Models PBG

- Protective barrier for loading docks
- Pedestrian gate meets load criteria specified by OSHA which requires that it support a 200 lb concentrated load in any direction or a distributed load of 50 lbs per foot
- Anchors not included
- 42" height
- Designed for 8' to 12' door widths
- Options: single or double gate for 8' model
- Safety Yellow powder coat finish is standard, with other colors available upon request: orange, blue, black and grey
- Manufactured in 5-15 working days and shipped from TX



## CORNER GUARD Model CG

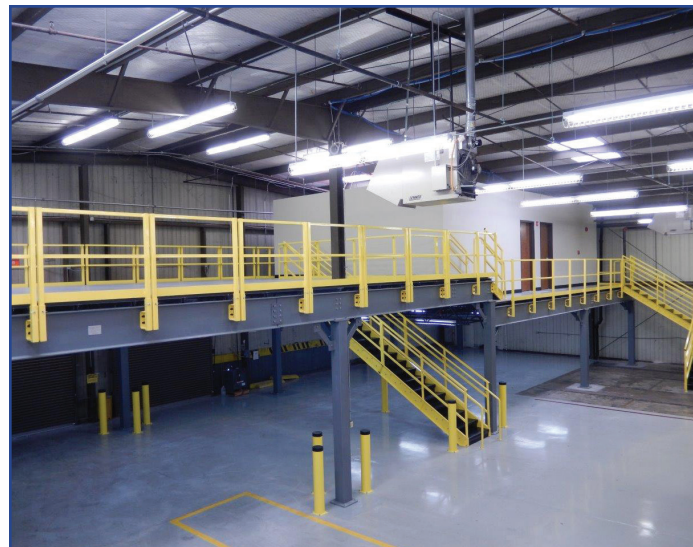
- Protect wall or rack corners from damage
- Standard heights are 12", 18" and 24"
- Steel thickness options are 1/4", 3/8" and 1/2"
- 5"x5" angle size
- Anchors not included
- Options: larger angle size, custom heights
- Safety Yellow powder coat finish is standard, with other colors available upon request: orange, blue, black and grey
- Manufactured in 5-15 working days and shipped from TX



## MACHINE GUARD Model MG

- Protect warehouse machinery from damage
- Standard heights of 10", 24" and 42"
- Standard widths of 36" or 48"
- Rated to withstand forklift impact of up to 10,000 lbs at 6 mph
- 4" square tubing models come with 1/2" x 8" x 8" baseplates
- 5" square tubing models come with 1/2" x 10" x 10" baseplates
- Anchors not included
- Options: custom sizes
- Safety Yellow powder coat finish is standard, with other colors available upon request: orange, blue, black and grey
- Manufactured in 5-15 working days and shipped from TX

# MEZZANINES & GATES



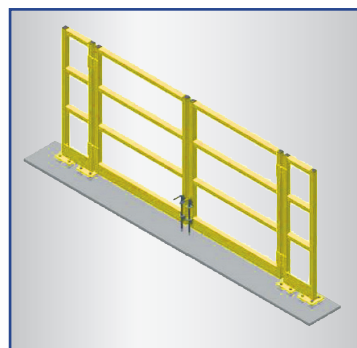
- Non-welded bolt connections and flexibility of design for future modifications, relocation and/or expansion and potential reconfiguration at a later date
- Equipment and machinery mounting options available; multi-tiered integration of existing structures
- Maximization of vertical clearance for exceptional under-mezzanine space utilization
- High quality design and standardization of components to keep installation costs down
- Built to last and backed with a 30-year structural warranty
- Optional: gates, drop plates, stairways and landings, ships and caged ladders, conveyor support and vertical conveyor crossovers

## MEZZANINE

Bluff's Mezzanines are an economical solution for freeing up floor space while providing expanded storage capacity. Easily create in-plant offices, observation platforms, personnel break rooms, extra storage areas, conveyor support structures or catwalks.

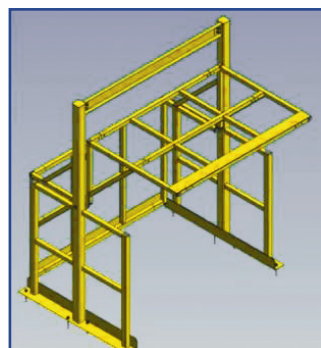
## MEZZANINE GATES

Add a gate to any mezzanine to increase safety and accessibility.



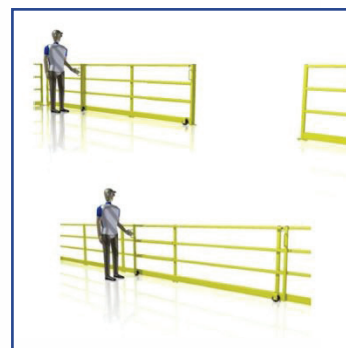
### Slide Gate

- Standard widths from 5' to 8'
- Designed to fit new or existing railing
- Durable powder coat finish
- Adheres to industry standards



### Pivot Gate

- Standard widths from 5' to 10'
- When mezzanine side is open, warehouse side is closed (and vice versa)
- Durable powder coat finish
- Adheres to industry standards

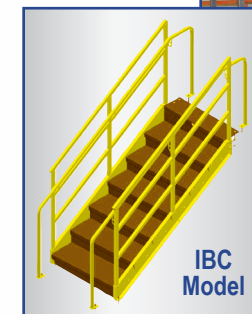


### Swing Gate

- Standard widths from 3' to 10'
- Designed to fit new or existing railing
- Single or double panel swing
- Self-closing hinges included
- Durable powder coat finish
- Adheres to industry standards



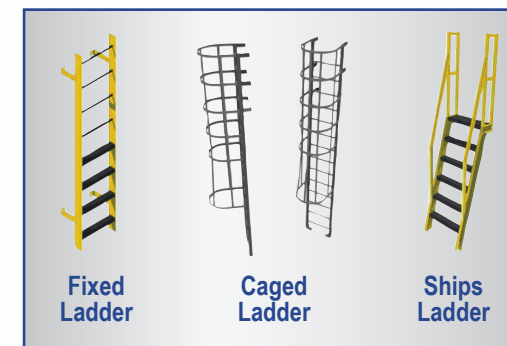
OSHA Model



IBC Model

## STAIRWAYS, LANDINGS & LADDERS

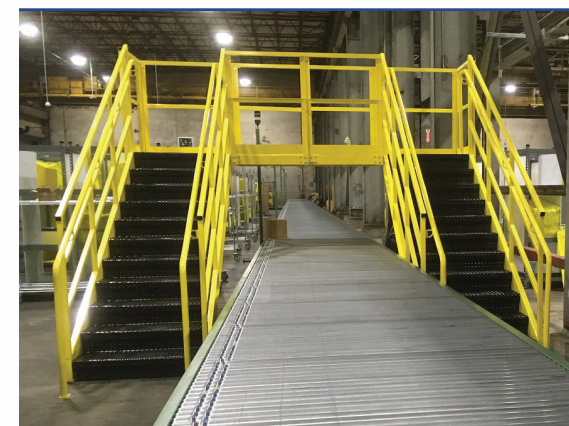
Bluff's Stairways, Landings & Ladders are designed and manufactured to meet specific application requirements, and are engineered with value and code compliancy in mind. Stairways can be integrated with landings, mezzanines, work platforms, conveyor crossovers or towers - IBC and OSHA models available. Fixed, Caged and Ships Ladders can also be added on for a safe, quick access point.



Fixed Ladder

Caged Ladder

Ships Ladder



## CONVEYOR CROSSOVERS

Bluff Conveyor Crossovers are designed to allow personnel to safely cross over active conveyors at designated and approved locations, significantly reducing the potential for worker injury and dramatically enhancing the efficiency of work flow.



# CANTILEVER RACKS



## CANTILEVER RACKS

Bluff Manufacturing's Cantilever Racks maximize space both vertically and horizontally to provide you with an economical, efficient storage and retrieval system. In addition, our all-structural steel fabrication ensures a long life for your storage investment.

- Minimize footprint of storage space while maximizing vertical and horizontal space density usage
- Capitalize on the higher lifting capacity and operational capability of current lifting equipment

- Avoid the expense of product loss/ damage through bypassing the pile-up method of on-the-floor storage and stacking
- Reduce handling time and enhance efficiency of inventory control/management through improved accessibility to storage space
- Economy of saving increases significantly as load length, height and bulkiness increases
- Simple installation, low maintenance and rugged operation increase the life of your cantilever racks

# CARTS, STORAGE & HANDLING



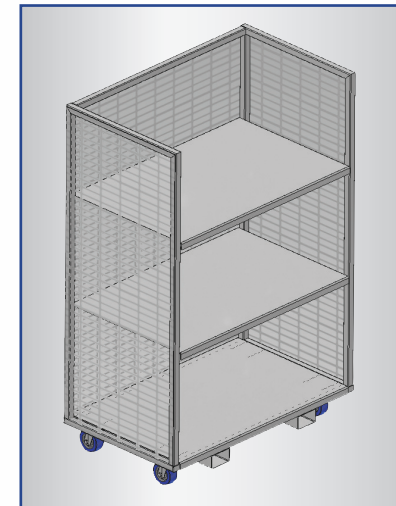
## PACKING BOX RACK

- Efficient design to meet box storage needs
- Custom compartments in a wide range of sizes
- Helps prevent damage to cartons
- Made to promote ergonomic pick-and-pull of boxes and cartons
- Durable power coat finish



## ORDER PICKER CART

- Designed to attach to existing order picker
- Worksheet required for base design
- 1,000 lb load capacity
- Made of 5/16" steel diamond plate ; sides expanded steel; welded steel tow hook
- 54" wide x 60" long x 42" high
- 688 lbs
- Standard safety yellow color – custom colors available
- Comes with hand holes, pallet clamps, bolted wood



Order Picking Cart

## CUSTOM CARTS

- Bluff's Custom Cart offering brings a sense of ease and efficiency to order fulfillment processes. They can also be designed to aid with transferring goods – i.e. furniture, packages, etc. – to displaying products, implementing FIFO or creating a portable workstation.
- Optimizes order picking and increases product flow
  - Customizable shelving and compartments



Furniture Cart



A-Frame Cart

- Varying capacities available based on application requirements
- Castor wheels included – custom options available
- Cart base can be customized to accommodate any type of portability requirement
- Worksheet required

# OTHER STORAGE & HANDLING



## KEG FLOW Model KEGFLOW

- Installs into existing pallet racks to provide faster and easier handling of craft kegs
- Available in all-welded or variable width designs
- Welded model fits up to 120" deep pallet racks
- Variable Width model fit up to 60" pallet racks
- Powder coated safety orange – other colors available
- Worksheet required



AFRAMESTD



AFRAMETRUCK

## SLAB HANDLING EQUIPMENT

- Designed for storage and portability of granite slabs, either in a warehouse or on a delivery vehicle
- Model AFRAMESTD works for display & storage of slabs
- Model AFRAMETRUCK allows for vehicle transportation of slabs
- Options: single-sided wall display rack, fully-enclosed showroom display rack, slab handling fork extensions (worksheet required)



## WINE FLOW Model WINEBOTTLE



- Designed to fit into existing 42" deep pallet racks
- Gravity-fed solution for storing and picking individual bottles
- 3 sizes available – Narrow, Mid and Wide
- Works with up to 4-1/8" diameter bottles (larger than Magnum)
- Fully welded construction
- Powder coated safety orange – other colors available
- Worksheet Required



## SHEET ROCK DOLLY Model SRD

- Easily transport sheet rock, drywall, paneling, plywood, etc
- Load capacity 2,000 lbs
- Angled deck prevents slippage and provides optimal transportation of materials
- Indented back and open frame design for turns around tight corners
- Rounded corners to prevent product or wall damage
- Top grade steel construction
- Weighs 100 lbs when fully assembled
- Comes standard with 8" heavy duty mold-on rubber casters (2 fixed, 2 swivel)
- Optional – without casters
- Powder coated blue, with other standard colors available
- Manufactured in 7 working days and shipped from TX

# CUSTOM PRODUCTS



Wheel Guides

Slab Display Rack



Prisoner Bench

Rail Bridge

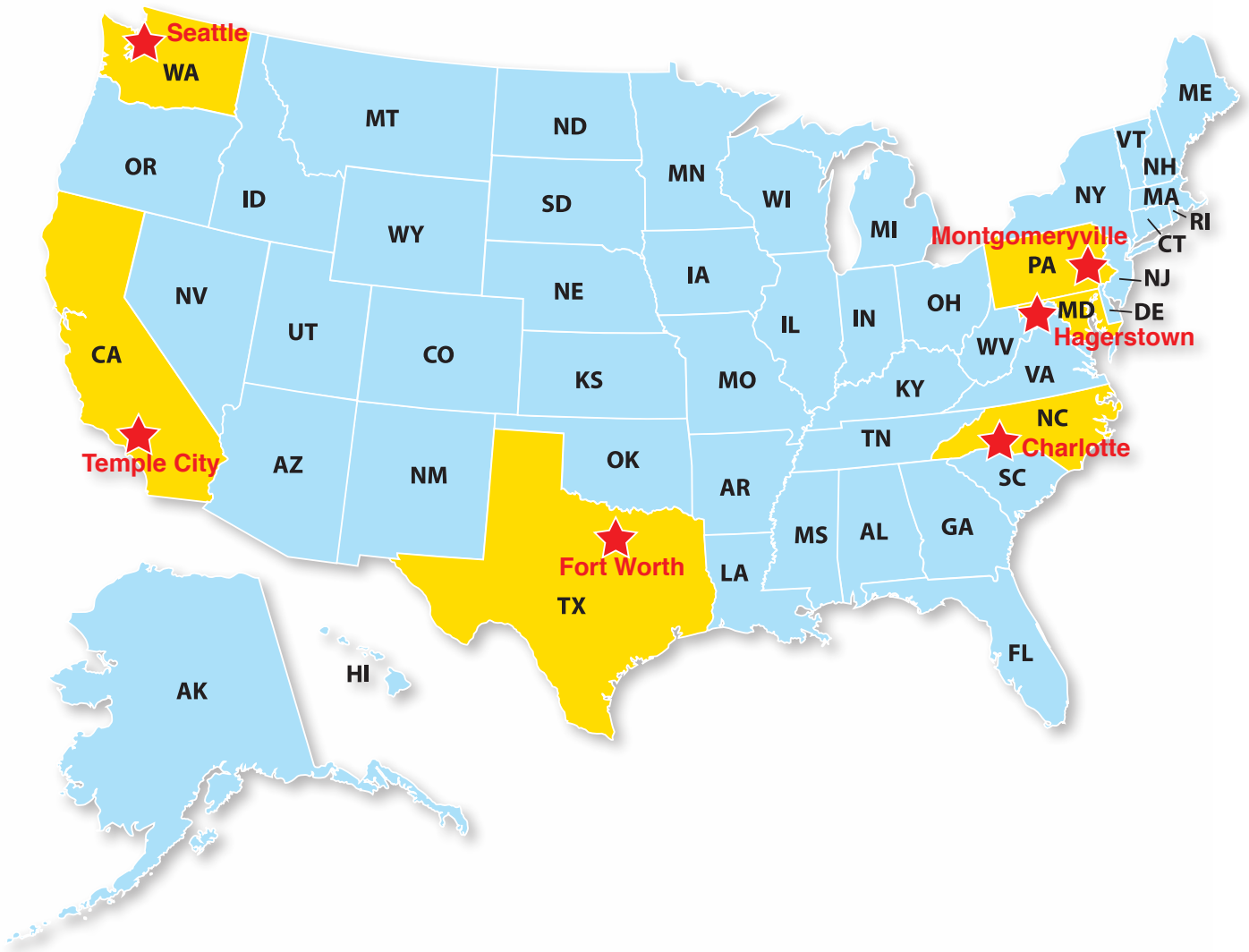
Security Gate



Pipe Rack

Outside Crossover

# FAST NATIONWIDE DELIVERY



**Bluff Manufacturing** is committed to delivering high quality products based on a speedy timeline, and backed by unmatched customer service. We know time is money!

- 6 distribution facilities across the U.S. for next day pick up or shipping
- Aluminum Dock Boards and Plates manufactured and shipped within 1 day from Texas
- 99.5% on time shipping history
- Custom products engineered within 48 hours
- Sales Support and Customer Service team available for 10 hours a day, Monday through Friday

**w.w.Cannon, Inc.**

Design. Layout. Build. Install.

1-800-442-3061  
www.wwcannon.com