

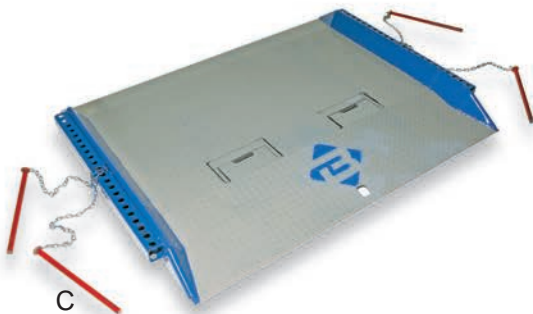
## Steel Dock Boards



SC



T



C



R

Speedy Board® option available on all dock boards and dock plates



Steel products are best suited for heavy-duty loading applications.

### STEEL DOCK BOARD Model SC

- Steel plate with welded steel curbs
- Lifting chains included
- Capacity 10,000 and 13,000 pounds

### STEEL DOCK BOARD Model T

- All-welded steel construction
- Capacities from 15,000 to 40,000 pounds
- Two four-hole pin pockets placed on each edge for flexible positioning
- Fold-down lifting loops
- Double-bend design

### RED PIN STEEL DOCK BOARD Model C

- For difficult trailer-to-dock positioning
- Dual-pin locking system
- All-welded steel construction
- Capacities from 15,000 to 40,000 pounds

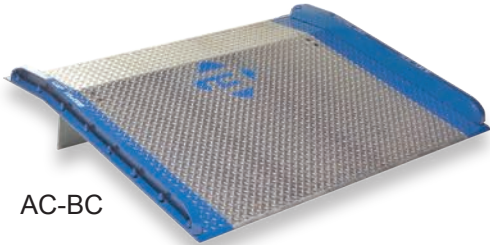
### RAIL BOARD Model R

- All-welded steel construction
- Capacities from 15,000 to 90,000 pounds
- Rectangular or flared design available
- Box understructure for strength and safety
- Heavy-duty locking rings for safe, secure positioning
- Fold-down lifting loops

*Manufactured and Tested in Compliance with ANSI Standard MH30.2*



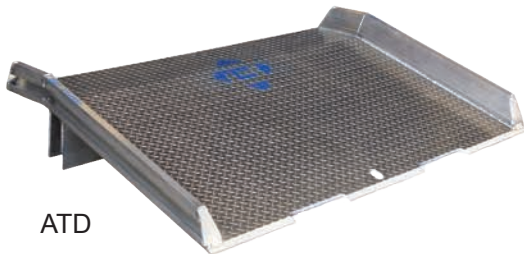
## Aluminum Dock Boards and Dock Plates



AC-BC



EZ Roll Option



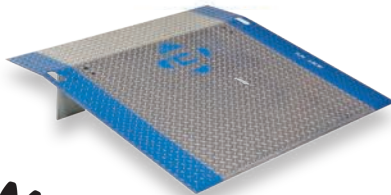
ATD



Optional Kick Plate  
& Non-Skid Surface

SL

Pat. No. D633,684



A-B

Aluminum products are ideal for low to medium volume dock loading applications

### ALUMINUM DOCK BOARD Model AC-BC

- Capacities from 10,000 to 15,000 pounds
- Full-length structural steel bolt-on curbs
- Available options include lifting chains, Speedy Board® cut-outs and EZ Roll attachment

### ALUMINUM WELDED TRUCK DOCK BOARD Model ATD

- All welded aluminum construction
- Capacities of 10,000 and 15,000 pounds
- Tread plate thickness of 3/8" or 1/2" aluminum
- Lengths ranging from 36" to 72"
- Locking legs in lengths from 8" to 13"
- Customization options include locks, lift chains, Speedy Board cut-outs (shown), lip lengths and bend angles.

### ALUMINUM SPRING LOADED DOCK PLATE Model SL

- Recommended for non-powered loading applications
- Vertically stored
- Top-of-dock mounted unit with dual spring assist
- Capacities are size specific. Wide range of sizes available

### ALUMINUM DOCK PLATE Model A-B

- Recommended for non-powered loading applications
- Available in two capacity ranges
- Low-cost solution to light activity applications
- Bolt-on steel legs for securing position between the dock and the trailer. Available options include Speedy Board cut-outs and EZ Roll attachment.

Manufactured and Tested in Compliance with ANSI Standard MH30.2

**www.Cannon, llc.**

Design. Layout. Build. Install.

1-800-442-3061  
www.wwcannon.com

(800) 433-2212 • Fax (817) 293-7570  
9201 South Freeway • Fort Worth, TX 76140  
[www.bluffmanufacturing.com](http://www.bluffmanufacturing.com)