

HIGH SPEED DOORS



DynamicRoll



CB 125



TECHNICAL DATA



AIR PERMEABILITY



HIGH SAFETIES



SELF-REPAIRING*



OIL FREE



HIGH SPEED
Up to 2,5 m/s



GRAVITY TECHNOLOGY

MAXIMUM DIMENSIONS	W 4000 mm x H 4000 mm
SPEED	Max opening speed Up to 2,5 m/s
	Closing speed 0,8 m/s
CYCLES TEST	1.000.000
AIR PERMEABILITY	Standard Class 2 Optional Class 5 with <i>patented magnetic system</i>
STRUCTURE	Not self-supporting
FRAME / MOTOR COVER HOOD	Standard Galvanized Steel
	Optional • Powder coated Steel • Stainless Steel 441/316
CURTAIN	Standard PVC curtain 900 gr/m ²
	Optional • Insulated • Translucent 35/40% • FDA (white) • Antistatic
SLIDING SYSTEM <i>lubrication-free</i>	Patented sliding system with high density Polyzene self-lubricant equipped of sliding zipper directly on curtain
CONTROL PANEL	Standard Powder coated steel box IP54 (300 x 500 x 150 mm)
	Optional • Stainless Steel • PVC box IP65 (300 x 400 x 150 mm)
	Inverter system 50/60 Hz with absolute encoder
	Power supply 1-ph, 230V max 16A
	Power supply 3-ph, 400V max 10A
	Power supply 3-ph, 230V max 16A
	Start/Stop Button
	2 free contacts (door open/ closed/ alert)
	Automatic/ Manual Interlocking between 2 doors
IP rating for motor and control panel IP54*	
WIRING	Plug and Play system IP65
SAFETIES	Standard • Photocells set IP65 • Anti-jam sensor reverse • WiFi safety edge IP65
	Optional Multi ray light curtain barrier H2500 IP67
EMERGENCY OPENING	Standard Mechanical key
	Optional UPS battery
ADVISING OPERATIVE TEMPERATURE	Operating till - 10°C * with heating kit added - Not apt to be installed in negative/positive temperature

DynamicRoll® CB 125 is a self-repairing* roll up door designed to separate over-pressured sterile environments, thanks to its sealing, the **CB 125** ensures controlled pressure leakage allowing the ventilation systems and air purification to operate correctly.

Thanks to its special compact frame and the sliding system, this door has a low permeability to be suited for controlled environments.

The specifically designed zip guide system allows the curtain to exit the guides in the event of impact and reinsert in one cycle. DynamicRoll® name assure the safety of staff, thanks to its curtain without rigid horizontal elements.



EN13241 CERTIFICATION

STANDARD	RIF.	TEST ACC.	RESULTS
WATER PERMEABILITY	EN 12425	EN 12489	Class 1
WIND LOAD	EN 12424	EN 12444	Class 3
AIR PERMEABILITY	EN 12426	EN 12427	Class 2
			Class 5 with patented magnetic system
SAFE OPENINGS	EN 12453	EN 12445	✓
MECHANICAL RESISTANCE	EN 12604	EN 12605	✓
UNINTENDED MOVEMENTS	EN 12604	EN 12605	✓
THERMAL TRANSMITTANCE	EN 12428	EN 12428	6,02 W/m ² K
PERFORMANCE (CYCLES)	EN 12604	EN 12605	1.000.000

Values can change depending on door dimensions

*System on demand due to possible change air permeability values

TECHNICAL DATA



We have got the certificate **ISO 5** thanks to the special sealing system, getting the awards of Single product Particle Emission e Single product Hygienic Design.

Classe	numero massimo di particelle/ft ³					ISO corrispondente
	≥0.1 μm	≥0.2 μm	≥0.3 μm	≥0.5 μm	≥5 μm	
1	35	7	3	1		ISO 3
10	350	75	30	10		ISO 4
100		750	300	100		ISO 5
1,000				1,000	7	ISO 6
10,000				10,000	70	ISO 7
100,000				100,000	700	ISO 8



Single product
Hygienic Design

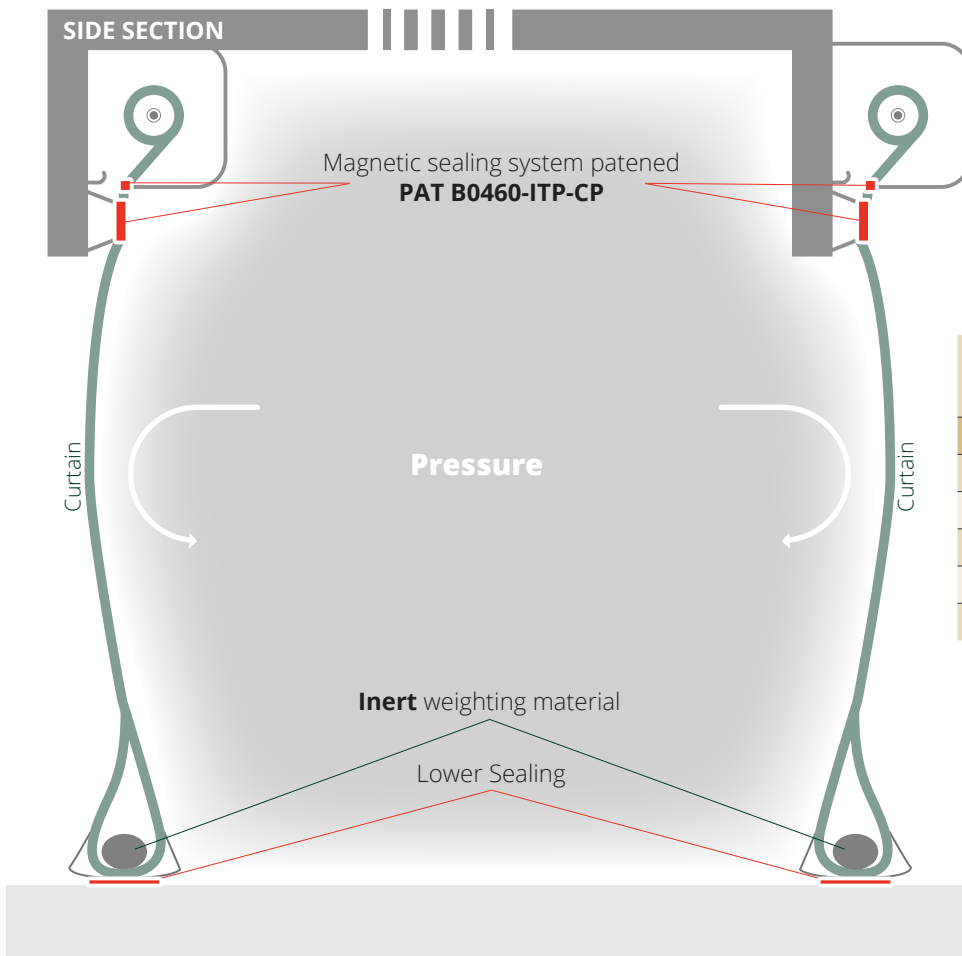
Suitability
up to GMP Class C

Single product
Particle Emission

Test parameter(s)	Air Cleanliness Class
n = 1 v = 1.2 m/s d = 0.5 mm l = 30 μm t = 20 s	5
Overall result	

The **DynamicRoll® CB 125** is provided in class 2 in the standard version, but it can reach up to air permeability class 5 according to EN 12426.

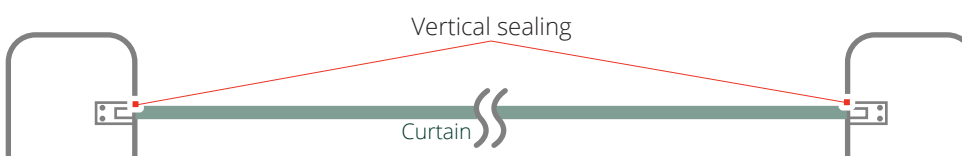
SEALING SYSTEMS



TEST DATA WITH PRESSURE
Door size 3500 (L) x 3000 (H) UNI EN 12427:2002

Pa	m ³ /h	-Pa	m ³ /h
10	4,82	-10	9,80
20	6,30	-20	10,68
30	13,35	-30	14,48
40	11,64	-40	19,12
50	12,67	-50	19,91

VIEW FROM ABOVE Magnetic sealing system patented **International PAT B0510-EPP-CP**



UNI EN 12426:2001

CLASSIFICATION: The air permeability of an evidence shall be declared according to the given classes in Table 1.
An evidence belongs to a specific class, if the test results measured respecting the EN 12427 do not exceed the value specified for that class in Table 1.

TABLE 1 - Air permeability classes

Class	Air permeability Δp at a pressure of 50 Pa [m^3/m^2h]	Specification
0	-	No benefits determined
1	24	-
2	12	-
3	6	-
4	3	-
5	1,5	-
6	-	Exceptional; agreement between manufacturer and buyer for infiltration and pressure

NOTES Where conditions greater than 50 Pa are applied, the situation must be considered exceptional and greater than class 5 and should be the subject of contractual approval between manufacturer and purchaser.

UNI EN 12427:2002

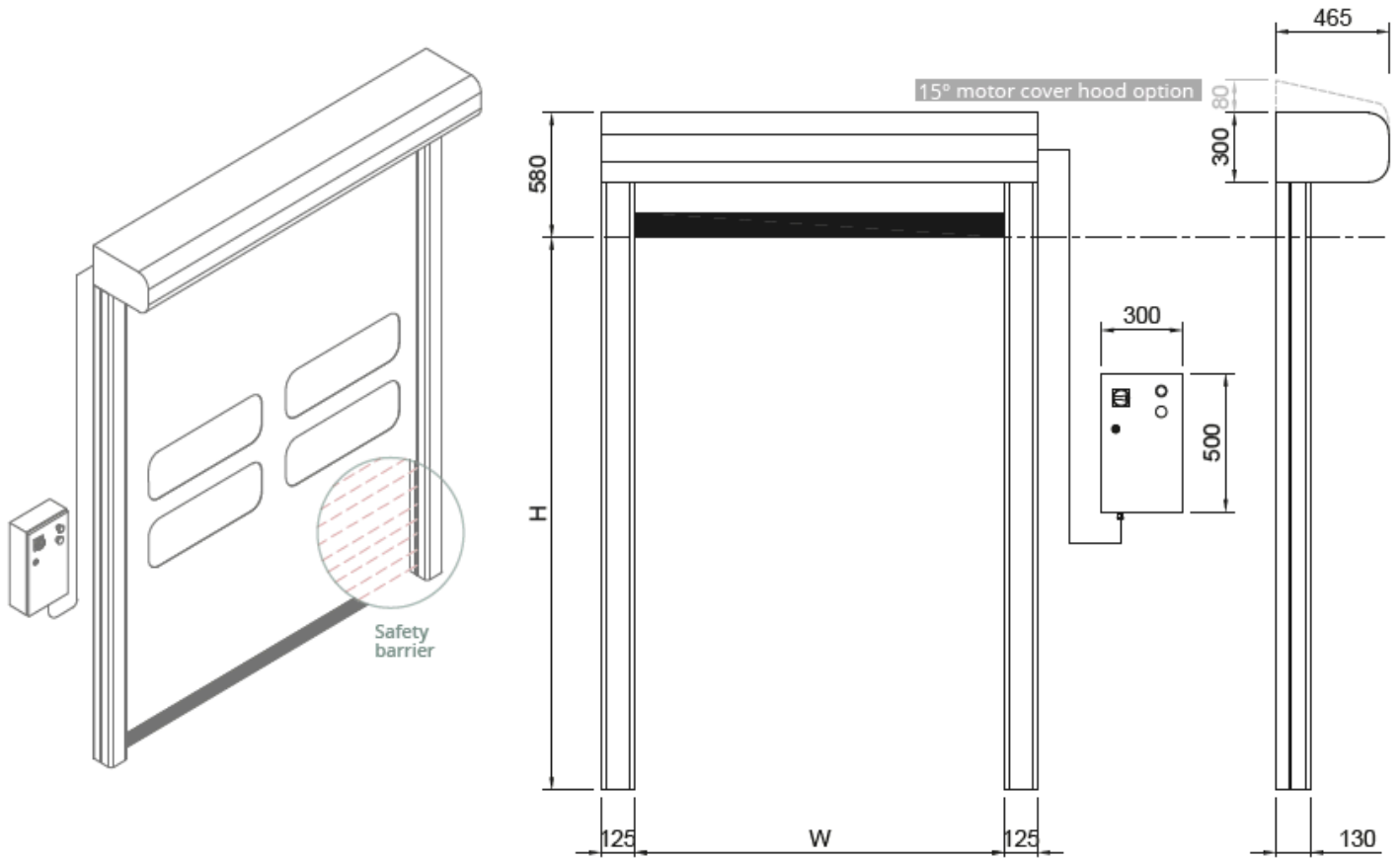
TEST PREPARATION

- The evidence shall be installed in accordance with the manufacturer's published or referenced installation instructions.
- The evidence shall consist of components that conform in detail to the manufacturing quality level. Wherever possible the evidence should be set up from scratch. Doors and components in stock shall be considered as newly manufactured if they comply fully with current manufacturing specifications.
- The evidence must be clean and with the surfaces dry.
- Any ventilation, drainage or discharge holes shall be taped shut or left open according to the purpose of the test and this purpose and condition shall be noted and recorded.
- In most instances, air can pass through both fixed and opening gaps.
- For minimum evidence dimensions see Table 1

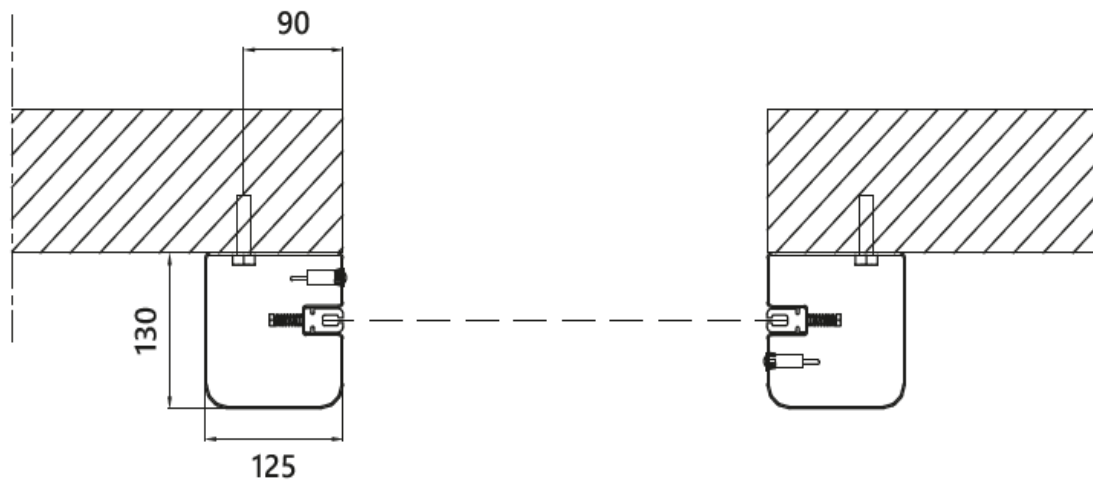
PROSPECTUS

	Minimal evidence dimensions
Commercial and garage doors	Width: 2 000 mm Height: 2 000 mm
Industrial doors	Width: 3 500 mm Height: 3 000 mm

DOOR SPACE REQUIREMENTS



FIXING DETAILS

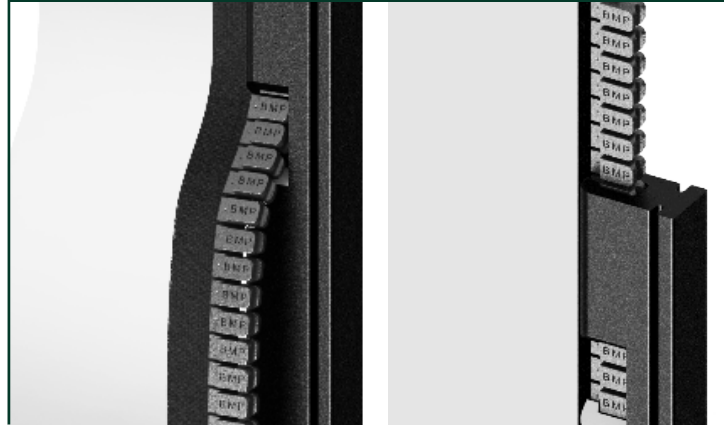


ADVANTAGES

- Self-repairing*
- Rapid
- Sealing
- Noiseless
- No rigid elements inside the curtain for 100% safety
- Plug & Play (easy to install)
- Low maintenance
- Energy savings

*System on demand cause it could change air permeability values

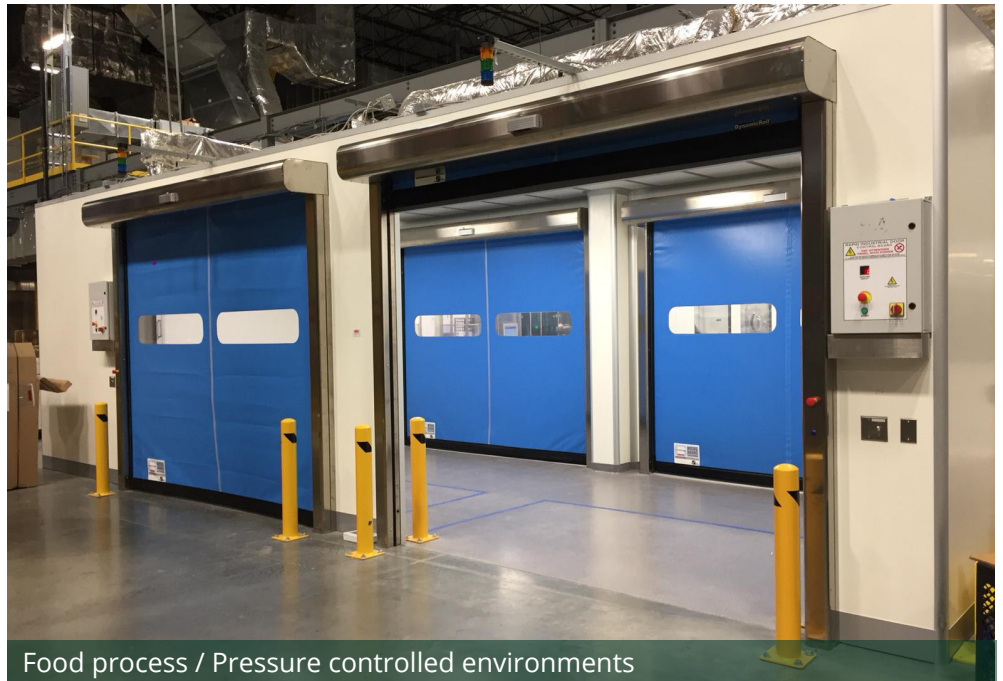
SLIDING SYSTEM / SELF-REPAIRING



APPLICATIONS



Clean Rooms / Pharmaceutical



Food process / Pressure controlled environments



Clean Rooms



Pressure controlled environments

PVC CHARACTERISTICS

STANDARD PVC

Composition and tests

EXTERNAL SIDE			
Material	Finishing	Color	Thick
PVC	Opaque	18 standard	0,7 mm
FABRIC			
Material	N. tarps	Title	EN 2286-2
PES	1	1100Dtex 12x12	900 g/m ²
INTERNAL SIDE			
Material	Finishing	Color	Thick
PVC	Rough	18 standard	0,2 mm
COLD RESISTANCE ISO 4675/90 -50°C ±5			
HYDROLYSIS TEST 75°C 95% humidity none variation			
GAS OIL TEST - none variation			
MARINE WATER TEST - none variation			
OZONE TEST ISO 3011 none crack			
T. STORAGE (°C) -30 +65			
FLAME TEST ISO 3795 < 100 mm/min			
PERFORATION RINA 3.A1.2.7 (N) > 100			
EXERCISE 7 days -70°C ISO 6065 none variation			

Characteristics

THICK ISO 2286/3 (mm) 0,9±0,1
WEIGHT ISO 2286/2 (kg/m ²) 0,90±0,1
LOAD BREAK ISO 1421 6000 N/50mm
WARP EXTENSION ISO 1421 4300 N/50mm
TEXTURE EXTENSION ISO 1421 4000 N/50mm
WARP BREAK dIN 53363 (N) > 600
TEXTURE BREAK dIN 53363 (N) > 530
ADHESION dIN EN ISO 2411 130 N/50mm
EEC CONFORMITY - Yes
SPECIFIC USE industry, refrigerators, car washes, supermarkets, warehouses
ASSOCIATION -

Colors



Translucent Insulated available Antistatic available

FDA CERTIFICATED PVC

Food Drug Administration

TECHNICAL DATA

Composition and tests

TOP FACE COATING			
Material	Finish	Color	Thickness
PUR	Opaque	White	0,6 mm
FABRIC			
Material	N. tarps	Title	EN 2286-2
PET	1	2200 Dtex 12x12	1500 g/m ²
UNDERSIDE COATING			
Material	Finish	Color	Thickness
PUR	Plain	White	0,6 mm
COLD RESISTANCE ISO 4675/90 -30°C ±5			
TROPICAL TEST 75°C 95% humidity none variation			
DIESEL FUEL TEST - none variation			
SEA WATER TEST - none variation			
OZONE TEST ISO 3011 none crack			
T. STORAGE (°C) -30 +65			
ABRASION ISO 5470/80, 5N C517 400 cycles (mg) 1			
PUNCTURE RINA 3.A1.2.7 (N) > 125			
EXERCISE 7 days -70°C ISO 6065 none variation			

Characteristics

THICKNESS ISO 2286/3 (mm) 1,20±0,1
WEIGHT ISO 2286/2 (kg/m ²) 1,30±0,1
TENSILE STRENGTH WARP ISO 1421 6000 N / 50mm
ELONGATION YARN ISO 1421 [%] > 14
ELONGATION WEFT ISO 1421 [%] > 20
TEAR RESISTANCE WARP dIN 53363 (N) > 250
TEAR RESISTANCE WEFT dIN 53363 (N) > 220
PEELING TEST dIN EN ISO 2411 130 N/50mm
FDA COMPLIANCE CEE Yes
SPECIFIC USE cleanrooms, clinical, hospital
ASSOCIATION DynamicRoll

Disclaimer

The information contained in this document describes the features of the BMP EUROPE product as tested in a laboratory, other indications excepted, environment at a temperature of +23 degrees °C at 50% relative humidity. It does not necessarily reflect the conditions of industrial use and it does not guarantee the product to be suitable for certain applications. The client remains liable for the proper selection and correct use of the BMP EUROPE product. BMP EUROPE cannot be held responsible should damages arise from the use of its products. Necessary alterations to this data can be made without prior notice.

CRISTAL CHARACTERISTICS

PVC SUPERCLEAR

! SUITABLE ONLY FOR POSITIVE TEMPERATURE ENVIRONMENTS

WINDOWS - CRISTAL

TECHNICAL DATA

Article	SUPERCLEAR 0.75 mm FR
---------	-----------------------

Technical specifications	Standards	Unit	Values
Thickness	-	mm.	0.75
PVC total weight	-	g/m ²	940
Light transmission	JIS K - 7361	%	87.5
Tensile strength <i>Lengthwise MD</i>	JIS K - 6732	N	26.6
Tensile strength <i>Crosswise TD</i>	JIS K - 6732	N	24.2
Tear strength <i>Lengthwise MD</i>	JIS K - 6732	N	55.6
Tear strength <i>Crosswise TD</i>	JIS K - 6732	N	57,4
Elongation <i>Lengthwise MD</i>	JIS K - 6732	%	406
Elongation <i>Crosswise TD</i>	JIS K - 6732	%	414
Cold crack resistance	JIS K - 6772	°C	-40

OPTIONAL ACCESSORIES

RADAR



OPENING POINT
RADAR TOF/SPOT
for internal use only



INFRARED RADAR
with cross-movement
adjustment



INFRARED RADAR
motion and presence
(pedestrian/forklift) radar

TRAFFIC LIGHTS



GREEN FIXED STANDARD
traffic light



RED FIXED STANDARD
traffic light



LED TRAFFIC LIGHT
with countdown



LED TRAFFIC LIGHT
BARRIERS
(connection card included)

BUTTONS



OPENING GREEN
BUTTON
with box



OPENING BLACK
BUTTON
with box



FREEZE STOP
BUTTON
with box



NO TOUCH
BUTTON



TRAFFIC LIGHT
BUTTON
DUAL-FUNCTION
opening and
intermittent door
opening/closing
signaling



WIND GAUGE



KEY SELECTOR



REMOTE CONTROL



BOLLARD B-PROTECT



PULL CORD SWITCH



MAGNETIC LOOP DETECTOR

w.w.Cannon, Inc.

Design. Layout. Build. Install.

1-800-442-3061
www.wwcannon.com