

DURULITE CR1400: Corrosion-Resistant Door

ONE DOOR - TWO GREAT BENEFITS

Corrosion Resistant

The Durulite CR1400 is impervious to acids, petroleum products, animal fats and cleaning solvents, making it virtually maintenance-free.



Hollow Metal Door

Durulite CR1400

The door panel is constructed using rotational molding technology, creating a one-piece outer skin of high density polyethylene with color molded-in that will never need painting.

Commercially Resilient

The Durulite CR1400 door system features industry-best manufacturing lead times. This door takes a punch like no other door system.



The interior core is ultra-high density urethane foam. This combination results in a panel that will absorb impact and perform well in the most difficult conditions.

AVAILABLE OPTIONS:

- Glazing options include clear polycarbonate or tempered glass.
- Glazing is set in a low-profile stainless steel lite kit.
- Lite kits are factory installed and available in a variety of sizes.
- Frame options include stainless steel or hollow metal.



FEATURES:

Durulite CR1400 door panels are **not** designed for exterior applications.

DOOR PANEL

Constructed with a 1/8" thick outer skin of rotationally molded polyethylene with an ultra high density, NON-CFC urethane foamed-in-place core. The panel can retain its properties from -40°F to 150°F continuous service and 170°F intermittent service with temperature differences of up to 40°F.

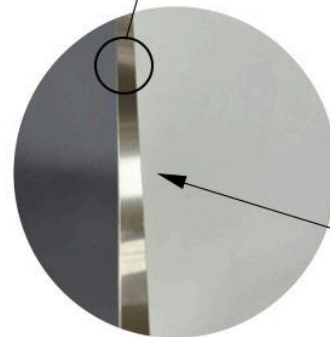
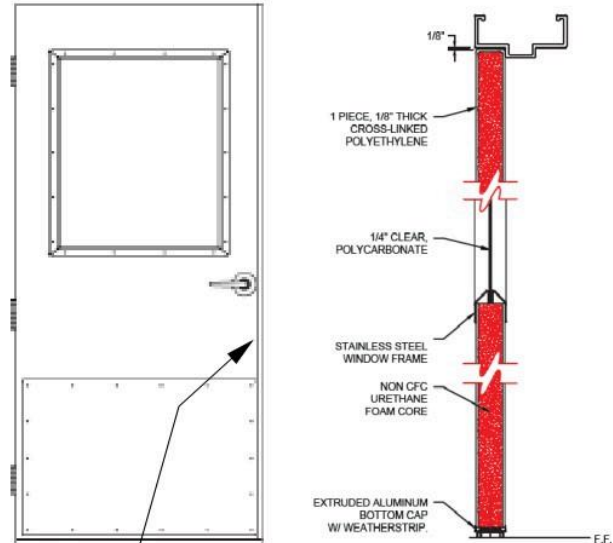
The overall thickness of the panel is 1.75", yet weighs only 3.66 pounds per square foot, making it lightweight and easy to open. The sanitary surface never needs painting and cleans easily with soap and water. Available in 14 standard colors.

INSULATION

The CR1400 has excellent insulation qualities with an EcoMate foamed-in-place NON-CFC urethane core. EcoMate insulation is designed to be environmentally friendly; it was awarded VOC (Volatile Organic Compound or SMOG) Exempt Status by the EPA.

GASKETING

All doors come standard with a replaceable bottom sweep. Doors are prepped according to hardware schedule and templates provided. Certain hardware, like concealed vertical rods, are not compatible with the CR1400 due to unique manufacturing methods. Please contact factory for verify compatibility with other types of concealed hardware.



A stainless steel cap on the leading edge offers additional strength and protection.

COLOR OPTIONS Actual color samples should always be requested if color accuracy or matching is key to your decision.

