

# Safety and Efficiency In Harmony.

Standard, bolt-together access solution.  
Faster and easier than custom fabrication.

 **ERECTA STEP**<sup>®</sup>  
A SixAxis Company



**5 Main Components**  
Unlimited Configurations



# Simple 5 Component System In Multiple Sizes.

## Modular Work Platform And Cross Over Stairs

ErectaStep quickly configures to gain safe access for maintenance and crossover applications for pipes, dike walls and other obstructions. Three platforms together provide up to 9' of linear clearance, without a tower support required. All pre-engineered and OSHA compliant. No fabrication required.



PRECISION MANUFACTURED STAIR & PLATFORM SYSTEMS

**ERECTASTEP**

## 5 COMPONENTS UNLIMITED CONFIGURATIONS



**Bolts Together**

No welding or fabrication required to construct any configuration.



PLATFORMS



HANDRAILS



TOWERS



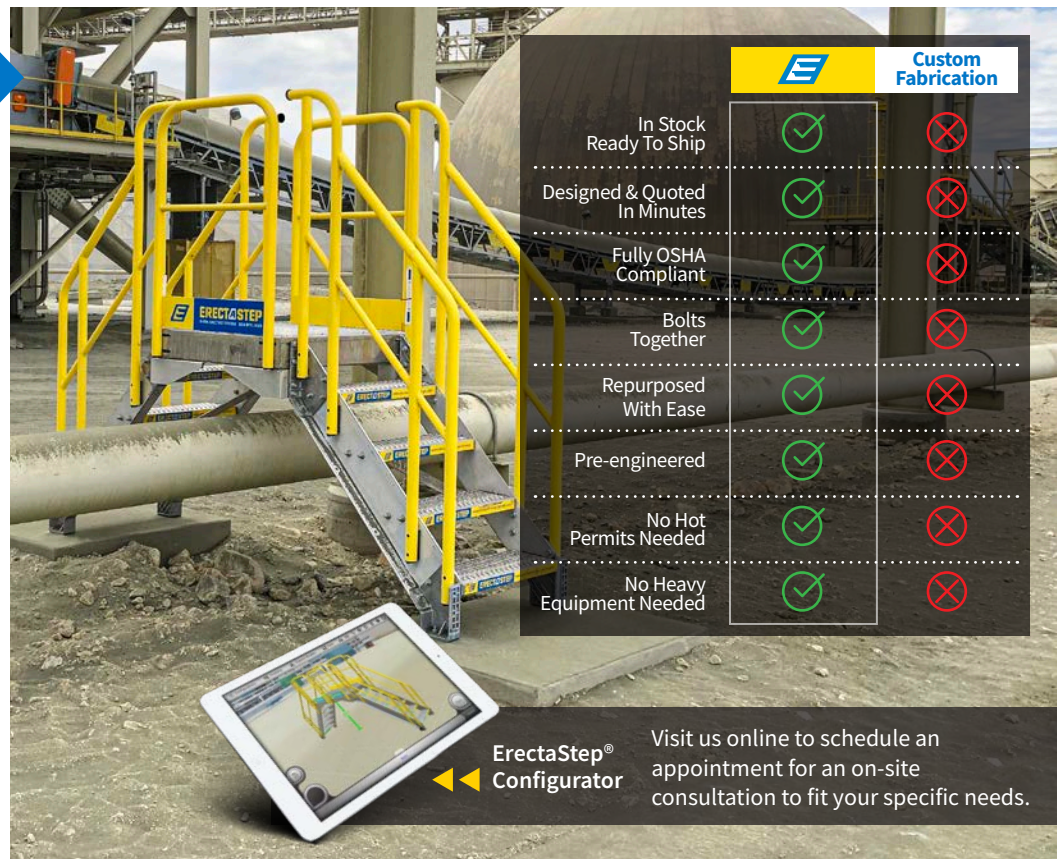
STAIRS



LADDERS

## Faster And Easier Than Custom Fabrication

- ✓ Pre-Engineered And OSHA Compliant
- ✓ Simply Bolts Together
- ✓ No Fabrication Required
- ✓ In-Stock And Ready To Ship
- ✓ Corrosion Resistant, Low Maintenance
- ✓ Easily Repurposed



	ErectaStep	Custom Fabrication
In Stock Ready To Ship	✓	✗
Designed & Quoted In Minutes	✓	✗
Fully OSHA Compliant	✓	✗
Bolts Together	✓	✗
Repurposed With Ease	✓	✗
Pre-engineered	✓	✗
No Hot Permits Needed	✓	✗
No Heavy Equipment Needed	✓	✗

◀◀ **ErectaStep® Configurator**

Visit us online to schedule an appointment for an on-site consultation to fit your specific needs.

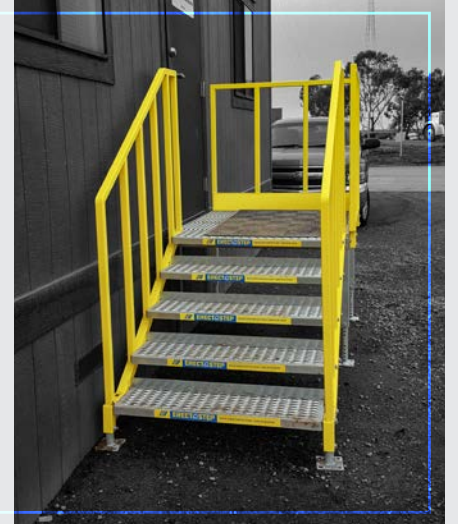
OSHA & IBC Compliant  
Portable Metal Stairs

# Portable Stair Units

- Choose from OSHA or IBC compliant models
- Rugged, powder coated galvanized steel and aluminum construction
- Available in 7 sizes from 28" - 63"
- Adjustable leg height for varied grades



**ERECTA STEP**



Designed For Work,  
Built For Safety

# Mobile Work Platforms & Stairs

- Access when and where you need it
- User friendly – easy to roll and steer
- In-stock and ready-to-ship
- Easily customized
- Extremely versatile



**RollA Step**

**4 MODELS**  
To fit any access need.



**TR** SERIES

Tilt & Roll Platform

**C** SERIES

Cantilever Work Platform

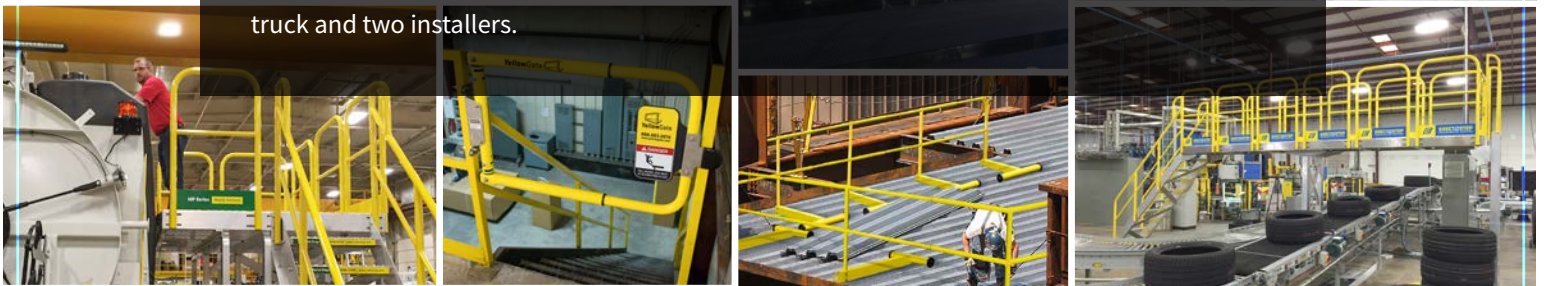
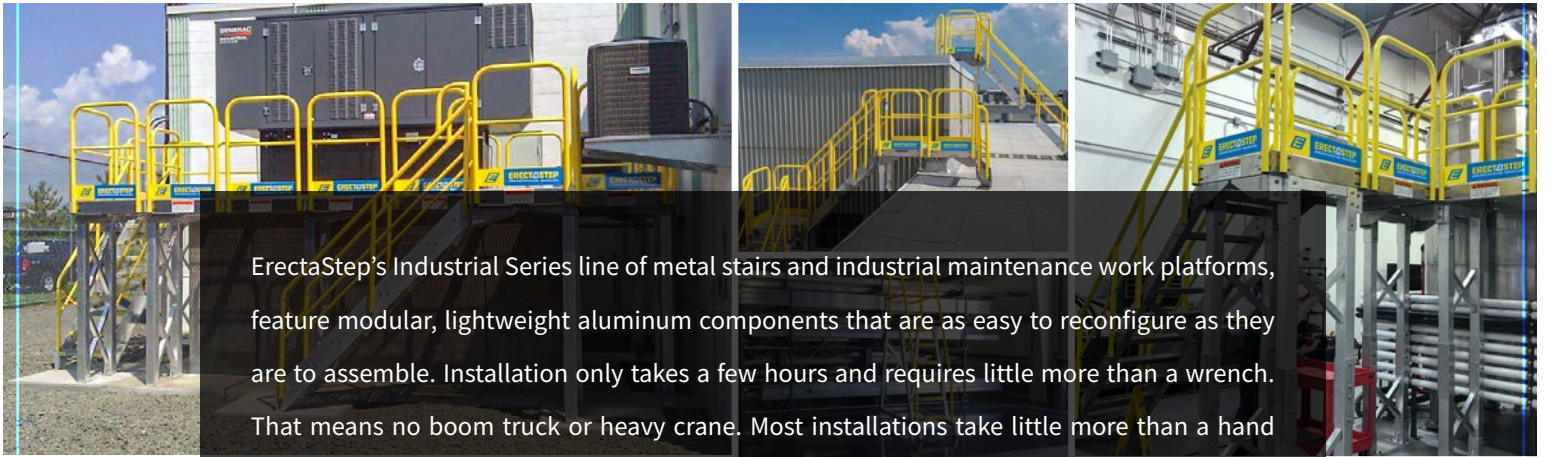
**G** SERIES

Self-Leveling Stairs

**MP** SERIES

Mobile Work Platform





# We're On The Road!

Discover the endless possibilities ErectaStep has to offer with a hands on look at a complete ErectaStep configuration as well as a RollaStep TR-series and a YellowGate, the Universal Safety Gate. With over 20 trucks roaming across the U.S., we're sure to be in your neck of the woods soon. Just give us a call and we're there. Contact us to schedule an on-site demo for you and your team.



ErectaStep's Fun Tabletop Version



Here are a few images of our demo trucks out in the wild, offering hands-on experience with some of our products



YellowGate® Fall Protection

# The Most Adjustable Swing Gate Available

- Universal mount for easy installation – no additional parts to order
- Helps meet OSHA regulations
- Durable - built to last indoors and out
- In-stock and ready-to-ship



## YellowGate



EASILY ADJUSTS FROM 16" [406mm] WIDE TO 36" [914mm]

Minimum width of YellowGate® unit:  
16" in perpendicular configuration,  
19.5" in parallel configuration.



Perpendicular Mounting Option




Parallel Mounting Option



**Malbec Tensioner**  
No spring to fail.



**UNIVERSAL MOUNT** 

Order a pallet of **10** today

**YellowGate RS**

**Portable, Fast & Easy Safety Railing System**  
42" in height, field adjustable and mobile

**YellowGate XL**

**Barrier and Dock Gate**  
Adjustable from 6 to 12' and 42" in height