



Set and Prevent™ RailGuard 200™ Base

Meets OSHA Requirements
1929.29(b) and 1926.502(b)

OSHA COMPLIANT

Garlock Safety Systems Set and Prevent RailGuard 200 base is the perfect long term fully OSHA compliant fall prevention rooftop solution.

- Meets or exceeds all federal and state OSHA regulations.
- Third party OSHA certifications.
- Foolproof, can only be installed in OSHA compliant orientations.

LOWER COST

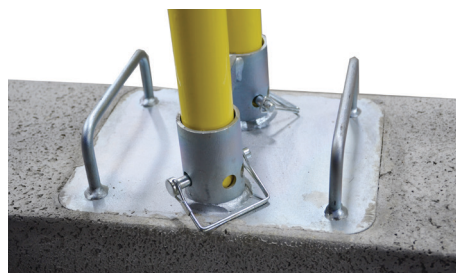
Efficient high volume production processes and natural materials provide low per unit costs that results in significant savings.

- OSHA compliant at a fraction of the price.
- 27% savings over our traditional base at the time of product introduction.
- Inexpensive rubber pad optional.

BEST VALUE

Take a moment to compare features and compare the price, it will quickly become evident that Garlock Safety Systems Set and Prevent base provides best in class value.

- Lowest acquisition cost and lowest total cost of ownership.
- Long term durability and installation flexibility.
- From Garlock Safety the trusted advisor and industry leader.



Why Choose Garlock Safety Systems™?

- Rigorously Tested to Exceed OSHA & ANSI Standards
- Full Passive Fall Prevention Portfolio
- In-House Engineering
- Custom Engineered Products Available

Features



Heavy duty steel insert with integrated handles and galvanized plating for long lasting durability.



Dual port design with connecting bar allows base transporter to be used for easy placement and positioning.



Made in the USA, OSHA compliant, feature rich plus lowest cost means the best value for long term Set and Prevent fall prevention.

Specifications

Set and Prevent Base Specifications

Material	Mechanically vibrated concrete with high aggregate content
Compressive breaking strength	8,500 PSI (typical cinder blocks 1,900 PSI and roofing pavers 5,000 PSI)
Rebar	3/8" galvanized steel with complete interior coverage
Life cycle testing	Passed independent third party testing, ASTM C666-15, "Standard Test Method for Resistance of Concrete to Rapid Freezing and thawing". Test results are available upon request.
Weight	103 lbs.
Insert	Galvanized steel with rebar
Color	Natural stone and galvanized
Rail Ports	2 ea.
Length	29.5 in.
Width	9.5 in.
Height	4.5 in.
Country of Origin	USA
Warranty	20 years against defects in materials and workmanship
Part Number	411-002-000

Set and Prevent Pad Specifications

Weight	6 lbs.
Color	Black
Material	Recycled rubber
Length	32 in.
Width	12 in.
Height	0.88 in.
Country of Origin	China
Part Number	156324

GARLOCK
SAFETY SYSTEMS

©2021 Garlock Safety Systems. All rights reserved.



161839 REV A
11/2021

Leading Edge Fall Prevention Clamp Solutions

For Roofing and Construction

Meets OSHA Requirements
1926.502(b)



The TurboRail stanchion is adjustable in height and accepts loop-end rails that take little space when stored. The button lock system makes set up and teardown fast and easy.



The Combo Clamp has an integrated standalone screw down bracket. It accepts all three stanchion types and the preformed rail adapter.

Loop-end rails or 2X4 lumber can be used with the combo stanchion to create an OSHA compliant fall prevention solution



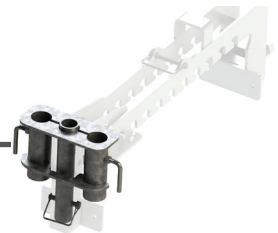
The adjustable height 2X4 lumber stanchion uses dimensional lumber to form the top rails and mid-rail. Clamp spacing is 24" less than the length of lumber used.



Combo Clamp

The combo clamp is our most versatile Perimeter Clamp for vertical clamping applications such as a parapet walls. The clamp accepts a wide range of stanchions. Heavy duty construction and tough zinc plating provides years of safe and reliable fall prevention.

The two-port preformed rail adapter allows the Combo Clamp to accept standard preformed rails.



Why Choose Garlock?

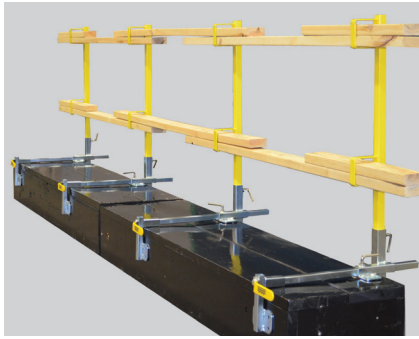
- Rigorously Tested to Exceed OSHA & ANSI Standards
- In-House Engineering
- 100+ Years of Industry Experience
- Full Passive Fall Protection Portfolio
- Custom Engineered Products Available



SlabGrabber™

Garlock’s SlabGrabber is known throughout the industry as being the safest and toughest slab clamp on the market. Using a pry bar or impact driver, it puts a death grip on the edge of the slab for the utmost in compliance, safety, and security.

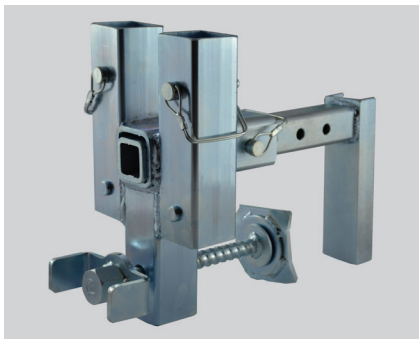
Its heavy-duty steel construction and concealed and protected thread system withstands years of abuse in the toughest construction job sites. User-provided 2” X 4” lumber is used to construct the OSHA-compliant rails and its integrated toeboard adapter keeps those at a ground level safe from fall objects.



Perimeter Clamp System

Garlock Safety Systems perimeter clamp delivers OSHA-compliant fall prevention with two different attachment methods to suit the application. And both unique mounting methods give workers 100% unobstructed access to the roof.

When configured as a clamp, it can tightly grip parapet walls between 8” and 24”. The adjustable stanchion ensures the top rail and mid-rail are at the correct height regardless of the parapet wall height. If no suitable parapet wall exists, the clamp can be converted in seconds to a screw-down attachment system.



Trench Box Clamp System

OSHA compliant leading edge fall protection system for use with trench boxes or trench shields. Trench boxes provide safety for workers down in the trench. What about workers working near the fall edge of the trench? For above-ground fall prevention rely on Garlock Safety System’s heavy-duty trench box clamp and RailGuard 200™ railing.

One person can quickly install the Trench Box Clamp to trench boxes ranging from 1” to 9” thick. The heavy-duty tensioner screw can be tightened by hand or for maximum productivity use a speed wrench. Use tools to reach the required torque of 90-foot pounds.

Part Number

P/N	Description
407482	Combo Clamp only, 6.5” to 24.5” clamping range, zinc plated
407495	TurboRail stanchion for loop-end TurboRails, safety yellow
407314S	2X4 lumber stanchion, safety yellow
407499	Combo stanchion for either loop-end rails or 2X4 lumber, safety yellow
408428	RailGuard 200 pre-formed rail adapter, two rail ports per adapter, zinc plated
407309S	10’ Loop-end TurboRail for use as a top rail or mid-rail, safety yellow
409076S	8’ Loop-end TurboRail for use as a top rail or mid-rail, safety yellow
407311S	5’ Loop-end TurboRail for use as a top rail or mid-rail, safety yellow
407326Z	Adjustable TurboRail, 5’ to 8’ adjustment range, zinc plated
301355	SlabGrabber clamp for 2X4 lumber, sold individually, safety yellow
301282	Perimeter Clamp kit, includes 4 clamps and 4 stanchion for 2X4 lumber, safety yellow stanchion
425-001-601	Trench Box Clamp, sold individually, zinc plated

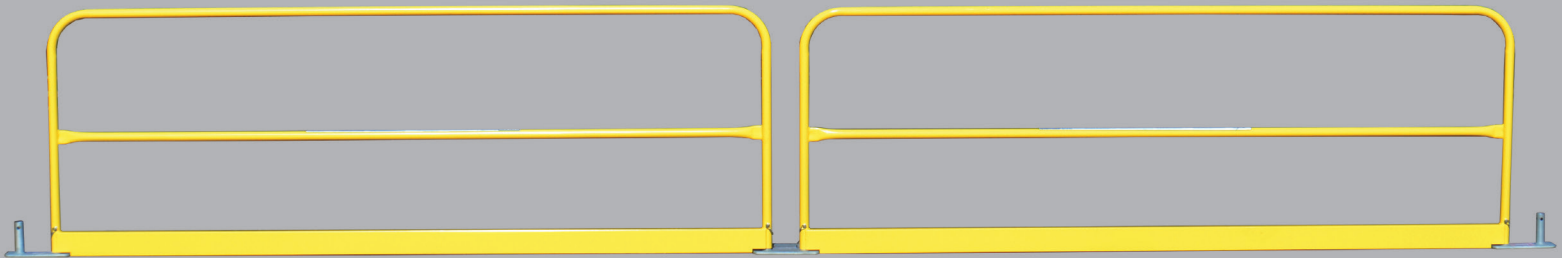


RailGuard GC™

General Construction Safety Railings

Meets OSHA Requirements

1910.29(b) and 1926.502(b)



Designed specifically for the general construction industry for rugged durability and ease of installation. An OSHA compliant passive fall protection solution for the construction of high-rises, elevator shafts, and other fall hazards existing during construction.

Rugged Durability:

16 gauge, 1 5/8" diameter welded Rail sections in 10', 8' and 5' lengths. Powder coated high visibility yellow for long life. Field proven design for more than 30 years with thousands of customers.

Easy Installation:

Only one anchor per base. Simply install the anchor, bolt down the base, place the rail over the post on the base and pin in place.

Integrated Toe-board:

Assure OSHA compliance every time and reduce repetitive job site cost by eliminating 2 x 4 toe-boards. Each RailGuard GC™ rail section includes a welded steel toe-board so there is NO chance someone forgets to install it.



Dual Base

Why Choose Garlock Safety Systems™?

- Rigorously Tested to Exceed OSHA & ANSI Standards
- Full Passive Fall Prevention Portfolio
- In-House Engineering
- Custom Engineered Products Available

Specifications

Baseplates:

Dual mount baseplate
L=11" W = 4.5" H= 5.63"
Weight = 6.5lbs.

Rail Sections:

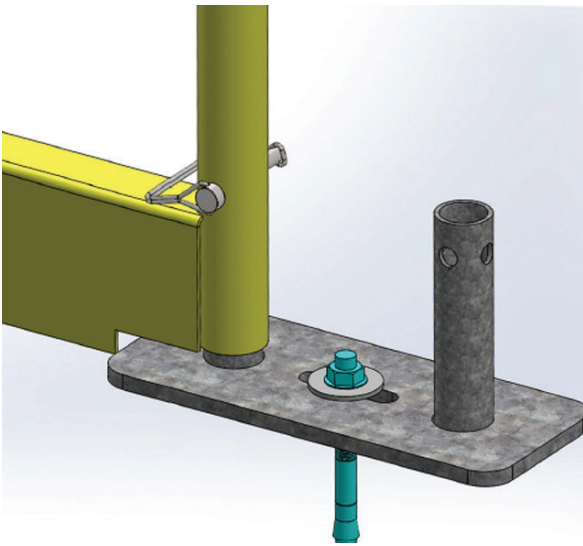
Top Rail Height = 42" tall
Mid-Rail Height = 20" tall

Three standard lengths: 10', 8', 5'
Standard rail section 16 ga. welded steel

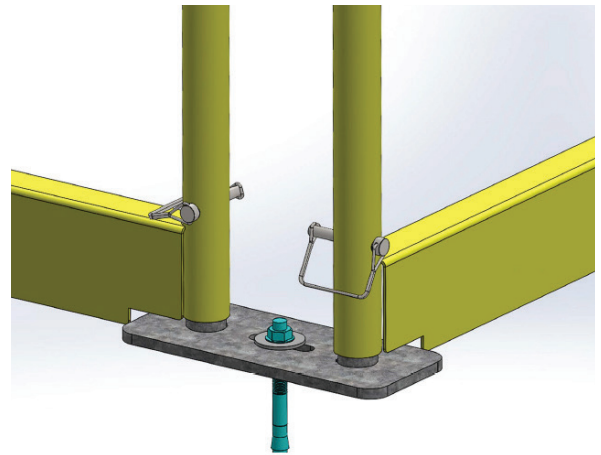
Toe-Board: welded steel Integrated

RailGuard 200™ has been deemed OSHA compliant by an independent certified safety engineering firm. Test results available upon request.

RailGuard GC™ Mounting Examples



End Using Dual Base



Corner Using Dual Base



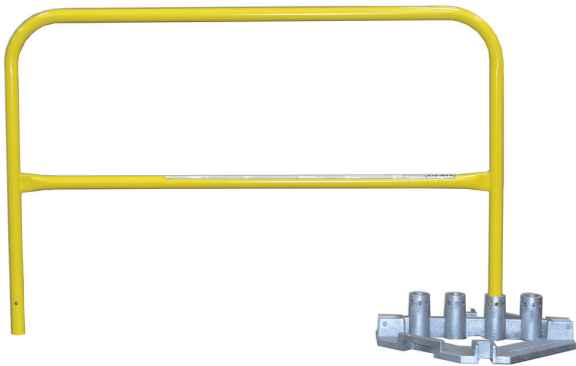


RailGuard 200™

Non-Penetrating Safety Guardrail System
Meets OSHA Requirements
1910.29(b) and 1926.502(b)

Features:

- Non-penetrating design maintains the roofs watertight integrity and its warranty
- Safety assured, OSHA compliant with third party verification upon request
- Available in a wide range of colors
- Adjustable rails available
- Metal base features integrated toe-board adapters for 2X4 lumber for construction professionals
- Only two 5' outriggers required for non-closed loop systems saves money



RailGuard 200 System: (1) Rail, (1) galvanized base, and (1) pin

The Originator

For more than 35 years, RailGuard 200 has been protecting workers at-height. RailGuard exceeds OSHA requirements for temporary and permanent guardrail applications.

Non-Penetrating

Maintain rooftop integrity with the weighted base design. Simply place the base in the desired location, drop in the rail section and pin it. No tools or drilling required.

Customizable

RailGuard 200 rails are available in a wide variety of lengths in safety yellow, galvanized or custom colors. Adjustable rails are the perfect way to end every run because its length can be adjusted on-site for a perfect fit. Add a self-closing or swing gate to complete your system.

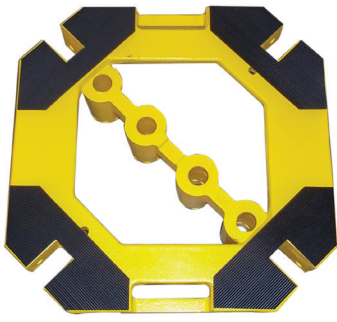
Not Just for Rooftops

RailGuard 200 systems can also be used for loading docks/pits, mezzanines, or machine guarding. A variety of permanent base mounting styles are available. Let your Garlock Representative help you build a solution for your passive fall protection needs.

Why Choose Garlock?

- Rigorously Tested to Exceed OSHA & ANSI Standards
- In-House Engineering
- 100+ Years of Industry Experience
- Full Passive Fall Prevention Portfolio
- Custom Engineered Products Available

Features



Base with pads for delicate roofs



Base transporter for metal or Set and Prevent base



Tool free system uses pin with locking bail



Integrated toe board adapter for 2 X 4 lumber



Adjustable rails minimizes precise measuring



Set and Prevent base and optional pad, best value

Specifications

Metal Base (these are not SAP specs)

Weight	90 lbs.
Material	Cast iron
Finish	Galvanized, powder coated yellow or custom colors
H X W X D	6.3" X 21.5" X 21.5"
Rail ports	Four
Rail mounting options	Powder coated plate or galvanized
Toe-board ports	Four
Auxiliary mounting bolt holes	Two
Lifting handles	Two

Due to continuous improvement, specifications are subject to change without notice.

Rail

Material	16 gauge Steel
Top rail height	42"
Mid-rail height	21"
Outer diameter	1.62"

RailGuard Components (Stocked Items)

411-002-000	Set and Prevent™ Base, OSHA compliant - lowest cost - best value
156324	Set and Prevent™ custom fit rubber pad, integrated water drainage, black
155160	Base, without pads, safety yellow
407723	Base, with adhesive pads, safety yellow
155159	Base, without pads, galvanized
407724	Base, with adhesive pads, galvanized

402335S	10.0 ft. Rail - safety yellow
404977S	8.0 ft. Rail - safety yellow
402337S	5.0 ft. Rail - safety yellow
404654G	10.0 ft. Rail - galvanized
406930G	8.0 ft. Rail - galvanized
404656G	5.0 ft. Rail - galvanized
155278	Pin with bail, zinc plated

Permanent Mount Railings

Meets OSHA Requirements

1926.502(b)(3) and (b)(4), 1910.29(b)(3) and (b)(4)

Permanent guardrail system solutions can be used in many locations, both inside and outside your facility. Permanent guardrail systems can be used for loading docks, stairways, mezzanines or machinery hazard areas. With one of our many base options, we can customize a solution to meet your needs. Available in a variety of colors to match your facility or order them in standard safety yellow.

Features

- 16 gauge construction welded rail sections that secure to floor or wall areas for permanent applications.
- Standard lengths from 2 to 12 feet. *Custom lengths also available.*
- Safety yellow standard powder coat. Many color options available.
- Multiple base mounting option.



Why Choose Garlock Safety Systems™?

- Rigorously Tested to Exceed OSHA & ANSI Standards
- Full Passive Fall Prevention Portfolio
- In-House Engineering
- Custom Engineered Products Available

Features



Single Post Floor Mount



Double Post Floor Mount



Box Floor Mount



Zip Base



Wrap Over Box Mount



Wrap Over Double Post



Flush Mount Single Post



Flush Mount Double Post

Specifications

	Weight (lbs)	Floor Space (in)		Wall Space (in)	
		Width	Length	Width	Height
Single Post Floor Mount	5	5.5	7.5	NA	NA
Double Post Mount	6	5.5	7.5	NA	NA
Box Floor Mount	9	6.5	7.5	NA	NA
Zip Base	2.3	3.25	5.5	NA	NA
Wrap Over Single Post	8	8	6	8	8.75
Wrap Over Double Post	10	9	6	9	8.75
Flush Mount Single Post	8	NA	NA	8	8.75
Flush Double Post	10	NA	NA	10	8.75
Wrap Over Box Mount	10	9	6	9	8.75

- Railing Lengths: 5', 7.5', 10'
- Railing Diameter: 1-5/8"
- Weight: 23-28 lbs

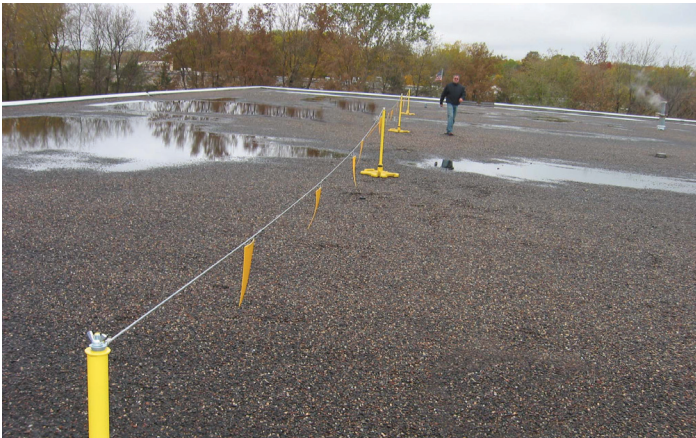


Visual Warning Lines

Everlast™ • Sentinel Cone and Base™

Meets OSHA Requirements

1926.502(f) (2)



Everlast

A permanent warning system with heavy-duty RailGuard™ base plates and plastic-coated cable. Everlast visual warning lines utilize plastic-coated cable with standard high-density plastic pennants. The heavy-duty powder-coated stanchions and RailGuard bases withstand years of use. The standard system includes (3) stanchions, (3) Bases, and 100 ft. of cable with plastic flags.

- Permanent warning line system used for visual warning of at-risk areas
- Uses RailGuard bases, steel cable, and plastic pennants
- Metal pennants optional



EverLast™ 200 uses the economical Set and Prevent™ base



EverLast™ 300 Uses our traditional metal base



Sentinel Cone and Base

The Sentinel Cone and Base warning line system is a economical and easy to deploy system for roofing and construction projects on roofs or at ground level. Third party OSHA certification is achieved with its 30 pound recycled rubber skid resistant base, 47" overall cone height and 39" flag tie off height.



Vinyl flags



Heavy-duty recycled rubber base



Orange cone

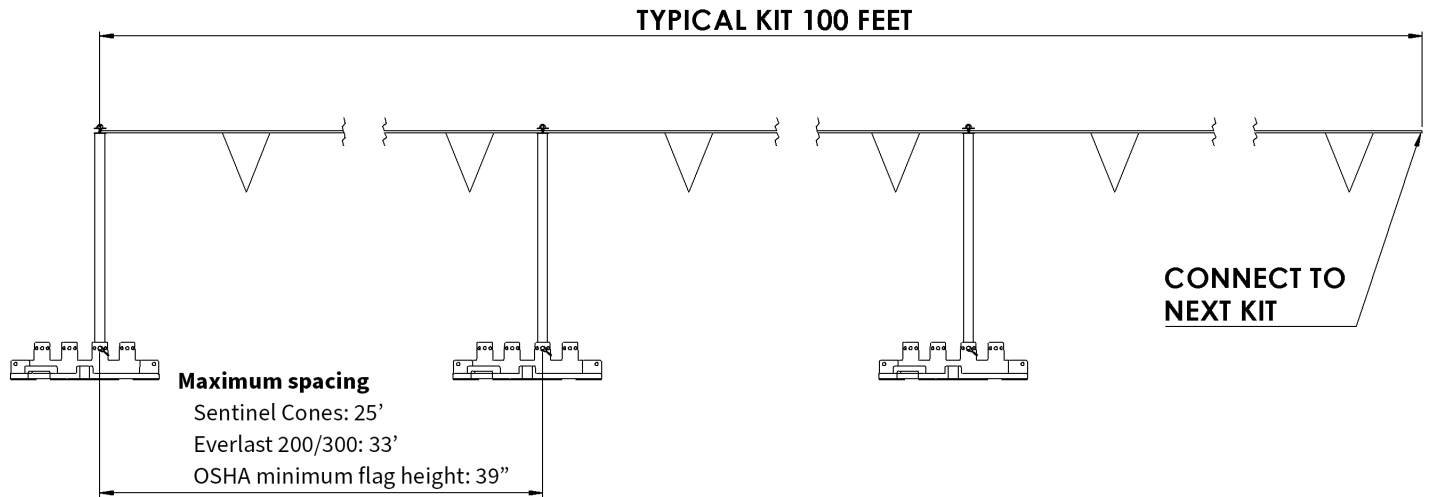
Why Choose Garlock Safety Systems™?

- Rigorously Tested to Exceed OSHA & ANSI Standards
- In-House Engineering
- Full Passive Fall Prevention Portfolio
- Custom Engineered Products Available

Application Consideration

Warning line kits are sold to accommodate the most popular application, connecting multiple warning lines together. Kits do not include the final stanchion to use all 100 feet of the warning line. The last segment of warning line is to be connected to the stanchion of the next warning line kit.

To create a single 100' segment of warning line or to end a run, purchase one additional base and stanchion separately.



Specifications

P/N	Family	Bases	Base Weight	Pads	Stanchions	Flag Pennants	Pins Included	OSHA Compliant
300975	Everlast 300	3 each safety yellow	90 lbs.	Attached to base	3 each yellow	1 each, 100', plastic	Yes	Yes
301548	Everlast 300	3 each galvanized	90 lbs.	Attached to base	3 each zinc	1 each, 100', plastic	Yes	Yes
436-001-001	Everlast 200	3 each Set & Prevent	103 lbs.	Set & Prevent pad included	3 each yellow	1 each, 100', plastic	Yes	Yes
436-002-601	Everlast 200	3 each Set & Prevent	103 lbs.	Set & Prevent pad included	3 each zinc	1 each, 100', plastic	Yes	Yes
156281	Sentinel cone	Purchase separately	N/A	N/A	Purchase separately	Purchase separately	N/A	Yes
156282	Sentinel base	Purchase separately	30 Lbs.	N/A	Purchase separately	Purchase separately	N/A	Yes
153810	Sentinel flagged line	Purchase separately	N/A	N/A	Purchase separately	Vinyl pennants	N/A	Yes



Cobra Cart™

Mobile fall arrest systems

Meets OSHA Requirements

1910.29(b) and 1926.502(b) 926.502(15) and (16)



Features:

- OSHA compliant with third party verification
- Capability for three workers tied off in fall arrest and two in restraint at the same time
- Compatible with a wide range of roof and decking materials, when on 4,000 PSI concrete two can be in restraint and one in arrest
- Integrated handle with brake and towing eye makes it easy to move by one person

Cobra Cart Standard



Cobra Cart Deluxe



OSHA Compliant

Garlock Safety Systems Cobra Cart is third party certified to OSHA standards to ensure maximum safety in elevated work environments. With the capability to accommodate up to three workers tied off in fall arrest and two workers in restraint simultaneously, the Cobra Cart provides unparalleled versatility.

5-Person Mobile Anchor Point

When there is a need for a team of workers to be tied off simultaneously for leading edge teamwork, the Cobra Cart is the solution of choice. The Cobra Cart can support up to five workers at the same time, three in fall arrest and two in fall restraint.

Cobra Cart Deluxe

This versatile cart comes equipped with a spacious toolbox, providing ample storage space for essential tools and equipment. The inclusion of the rear brakes ensures extra stability and control and the SRL tray protects your fall arrest equipment. Further more, the Deluxe Cart offers material handling provisions, allowing for easy transportation of materials and supplies to the worksite.

Why Choose Garlock?

- Rigorously Tested to Exceed OSHA & ANSI Standards
- In-House Engineering
- 100+ Years of Industry Experience
- Full Passive Fall Prevention Portfolio
- Custom Engineered Products Available

Features



Integrated handle/brake



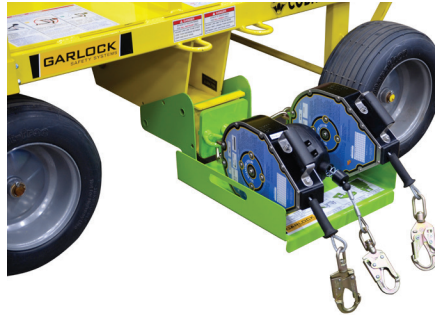
Engagement claw



Cobra Cart fall arrest attachment points



Parking brakes (included with Cobra Cart Deluxe, optional on the standard version)



Self retracting lifeline tray (included with Cobra Cart Deluxe, optional on the standard version)



Wide flat free tires exert less pressure on the roof

Specifications

Cobra Cart Standard

Cobra Cart Deluxe

	Cobra Cart Standard	Cobra Cart Deluxe
Fall Arrest Rating	3 people*	3 people*
Fall Restraint Rating	2 people	2 people
Tool Box	Optional Poly 7.5 ft ³	Standard Steel 8.5 ft ³
Parking Brakes	Optional	Standard
Material Rack	Not Available	Standard
Deck Space - Front	22" x 40"	22" x 40"
Deck Space - Rear	26" x 40"	None
Length (with handle)	102"	102"
Width	59"	59"
Height	36"	52"
Weight	1100 lbs	1100 lbs
Tires	Flat Free 18 x 8.50	Flat Free 18 x 8.50

*On 4000PSI concrete slab rated for 1 person only
Due to continuous improvement, specifications are subject to change without notice.

Cobra Cart Components

301528	Cobra Cart Deluxe	409445	Plastic tool box for Cobra Cart Standard	301088	Parking brake kit for Cobra Cart Standard
301463	Cobra Cart Standard	460-010-003	SLR tray for Cobra Cart Standard		

LifePoint™ Deluxe

Two-person Fall Arrest and Restraint Mobile Anchor

Meets OSHA Requirements

1926.502(15) and (16)



Features:

- Non-Penetrating to preserve rooftop water integrity
- Tie-off points for (1) fall-arrest and (1) fall-restraint
- Swiftly reposition with patented pivoting frame. Effortless transport and stable work setup by lifting and lowering the weight box.
- Galvanized and powder-coated corrosion-resistant components with minimal moving parts ensure years of high-performance reliability.

Non-penetrating versatility:

Our innovative design eliminates the need for claws or projectiles that could compromise the roof surface. The weight box structure not only guarantees OSHA compliance but also streamlines maintenance, minimizing components and inspection requirements.

2 Anchorage capability:

LifePoint Deluxe – an advanced fall prevention tie-off point solution meticulously crafted for two individuals in scenarios demanding non-penetrating versatility. It is engineered to provide fall protection anchor points for diverse scenarios – from (1) person fall restraint to (1) person fall arrest or (2) person fall restraint.

Built to last:

Invest with confidence in LifePoint Deluxe, constructed with galvanized and powder-coated corrosion-resistant components. Few moving parts ensure longevity, making it a reliable and enduring solution. Rest easy knowing that LifePoint Deluxe not only meets but exceeds OSHA requirements 1926.502(15) and (16).

Mobility redefined:

Single person can effortlessly reposition it within minutes, thanks to the patented pivoting frame design. Transitioning from transport to work position is seamless, allowing you to adapt to changing work environments effortlessly.



Why Choose Garlock?

- Rigorously Tested to Exceed OSHA & ANSI Standards
- In-House Engineering
- 100+ Years of Industry Experience
- Full Passive Fall Prevention Portfolio
- Custom Engineered Products Available

Features



Move the LifePoint Deluxe handle into its travel position to re-position it.



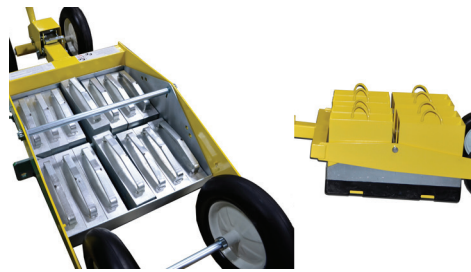
Press the red handle release and lower weights into working position.



Connect lanyard to either fall-restraint or fall-arrest.



Flat-free rubber tires.



Cast weights or cans available.



Optional Lifepoint protective cover.

Specifications

Empty weight	230 lbs.
Loaded weight	930 lbs.
Dimensions with handle retracted	70"= (L), 28"= (W), 20"= (H)
Dimensions with handle extended	190"= (L), 28"= (W), 42"= (H)
Tires	Flat free solid
Approved surface use	Poured Concrete EDPM (adhered & loose laid) TPO (adhered & loose laid) BUR (swept)

Due to continuous improvement, specifications are subject to change without notice.





FitRite™ Safety Rail

Modular Safety Guardrail System

Meets OSHA Requirements
1910.29(b) and 1926.502(b)

Features:

- OSHA compliant and third-party verified when installed per the manufacture's specifications
- A modular system consisting of straight galvanized pipe and a wide variety of fittings that can be used to fit any project
- Choose from three different predrilled stanchions, straight, inclined, or curved
- Hot dipped galvanized finish for long-lasting value
- Easy to cut and assemble using the included set screws



Customizable:

Custom perimeter safety rail just got easier with RailGuard™ FitRite railing systems. FitRite is a modular system that allows Complete customization for rooftops, mezzanines, loading docks or any other difficult to solve fall prevention situations.

Assembled on-site to fit your application:

1. Choose from three different styles of architecturally pleasing stanchion kits: Straight, curved or inclined.
2. Select the base style: Non-penetrating metal or Set and Prevent, standing seam, or permanent mount.
3. Order sections of 10' or 21' rails.

Multiple fitting types are available to construct unique fall prevention solutions for both inside plant and rooftop applications.

Beyond perimeter protection:

FitRite can be utilized throughout your facility for everything from separating people from hazards, machine guarding, mezzanines, loading docks, ladder, or stairway protection. A variety of self-closing and swing gate options are available to complete your system.

Rugged construction:

FitRite is designed for rugged outdoor or indoor use with standard galvanized finish. Pipe used for rails and stanchions can be custom colored, fittings are always galvanized.

Why Choose Garlock?

- Rigorously Tested to Exceed OSHA & ANSI Standards
- In-House Engineering
- 100+ Years of Industry Experience
- Full Passive Fall Prevention Portfolio
- Custom Engineered Products Available

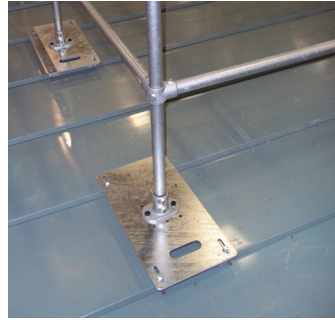
Options



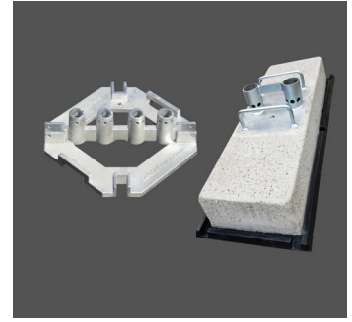
Straight, inclined or curved stanchion kits for use with bases or deck plates



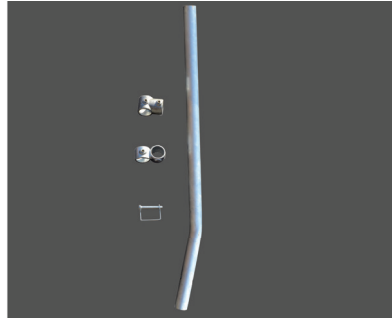
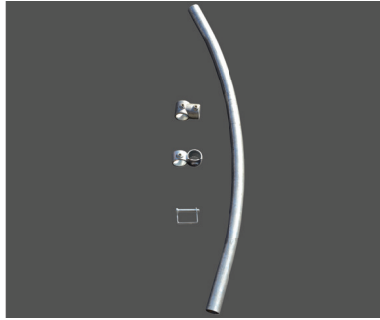
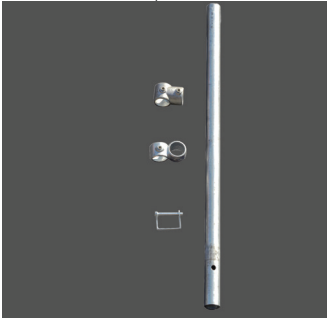
Multiple fitting choices



FitRite system on standing seam metal roof



Non-penetrating weighted bases



Mid stanchion kits include stanchion, pin, mid-rail crossover fitting and tee fitting at the top. End stanchion kits include stanchion, pin, mid-rail crossover fitting and 90-degree elbow fitting at the top. Kits available for metal bases or for use with standing seam deck plates.



Permanent mount bases (Multiple choices)

Specifications

Stanchion kits	Top rail 42" high, mid rail 21" high
Stanchion kit finish	Galvanized or custom color over galvanized stanchions, fittings galvanized
Pipe type	1.25" schedule 40 pipe
Pipe length	21' long or 10.5' nominal lengths for lower shipping costs
Pipe finish	Galvanized or custom color over galvanized

Due to continuous improvement, specifications are subject to change without notice.

FitRite Pipe Options

429829	21 ft. rail pipe, galvanized
427302	10 ft. (10.5 ft. nominal) rail pipe, save freight cost vs. 21 ft. pipe, galvanized
429829S	21 ft. rail pipe, safety yellow
427302G+yellow	10 ft. (10.5 ft. nominal) rail pipe, save freight cost vs. 21 ft. pipe, safety yellow



Perimeter Clamp System

Meets OSHA Requirements

1926.502(b)



OSHA compliant leading edge fall protection system that can be used on both flat edge surfaces and parapet walls.

Improved Productivity:

Perimeter systems save labor and improve efficiency over visual warning lines because, after setup, you can safely work all the way to the edge of the roof or deck structure without being tied off. Studies prove that workers are 50% more productive when not being restrained.

Quick Setup:

The perimeter clamp is easily set up by one person with no tools required. The ergonomically designed tensioning handle allows fast and secure tightening of the clamp on any parapet from 8" to 24" wide. The perimeter clamp accommodates both flat edge and parapet wall construction.

Rugged Construction:

The perimeter clamp is zinc plated and the stanchion is powder coated to resist the elements and provide long life. All components are made in the USA, built to work and tested to meet the latest OSHA requirements.

Stronger Design:

Everything about the perimeter clamp is stronger. From the larger pads that provide more surface contact to the 1.25" tubing versus competitive 1" tubing. The large tensioning handle allows better clamping force and is rubber coated to last.



Why Choose Garlock Safety Systems™?

- Rigorously Tested to Exceed OSHA & ANSI Standards
- Full Passive Fall Prevention Portfolio
- In-House Engineering
- Custom Engineered Products Available

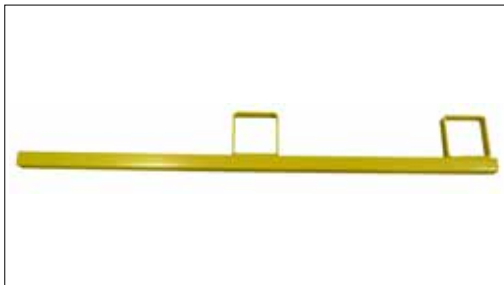


Typically the Perimeter clamp is clamped onto the vertical edge of a parapet wall. The stanchion is height adjustable to ensure the OSHA compliancy. Job site provided 2X4 lumber is used for the safety railing.



The perimeter clamp can be disassembled and mounted using four or eight 5/16" lag bolts driven into to a wood cap rather than the screw clamp method. This ensures no clamp protrusion into the roof top work zone which may inhibit certain types or work.

Features



42" stanchion



Tool Free Perimeter Clamp

Specifications

Stanchions	42"
Spacing	Recommended 6 ft. max. 8ft.
System Includes	1 clamp, 1 stanchion
Perimeter Clamp	Adjustable from 8" - 24"
Weight (lbs.)	14

Garlock Safety Systems does not provide the 2X4 wood used for rail and therefore cannot attest to suitability or set thereof for this application.



HatchProtector™

Roof Hatch Safety System

Meet OSHA Requirements

1926.501(b)(4)



Features:

- Easy to carry through the hatch and quick installation
- Rugged design and non-penetrating maintains roof integrity
- Equipped with color matched EasyFit™ self-closing gate
- Choice of safety yellow or galvanized rails
- Multiple sizes and adjustability fits virtually all hatches
- Fit-Rite™ HatchProtector versions available for unique applications



OSHA 1910.28 Sub-Part (D) requires all rooftop entry and exit points or hatches be protected on all sides and be equipped with a self closing gate. The HatchProtector does just that and has a non-penetrating design to maintain the watertight integrity of the roof.

It is quick and easy to install using simple hand tools with no drilling. Its modular design reduces shipping costs and makes it easy to bring up through the hatch.

Multiple sizes are available to fit the most popular hatches on the market. For unique applications, use a modular Fit-Rite standard or large version that can be configured in a number of ways to meet your needs.

Why Choose Garlock?

- Rigorously Tested to Exceed OSHA & ANSI Standards
- In-House Engineering
- 100+ Years of Industry Experience
- Full Passive Fall Protection Portfolio
- Custom Engineered Products Available

Features



Optional deluxe grab bar provides increased safety and sense of security.



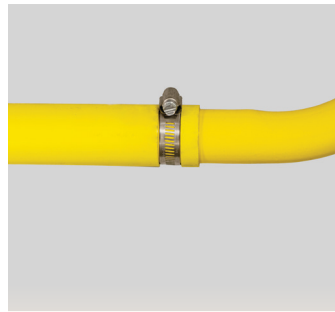
Self-closing gate prevents accidental entry.



Unique compression fit design. No drilling!



Wide slots provide a wide adjustment range.



Adjustable rails for hatches of different lengths.



Rugged spring loaded hinges allow the gate to open to the left or right.



Yellow foot pads protect delicate roofs.

Specifications

Available in yellow or galvanized

Top Rail Height	42"
Mid Rail Height	21"
Horizontal Rails	Galvanized or Safety Yellow
Vertical Stanchions	Galvanized Finish
EasyFit Gate	Galvanized Slide, Plate Galvanized or Safety Yellow

Part Number	Finish	Hatch Curb Dimensions
452-010-001	Yellow	30" to 36" in width, 36" to 54" in length
452-010-600	Galvanized	30" to 36" in width, 36" to 54" in length
452-011-001	Yellow	30" to 36" in width 96" to 114" in length
452-011-600	Galvanized	30" to 36" in width, 96" to 114" in length
452-012-001	Yellow	32" to 48" in width, 42" to 60" in length
452-012-600	Galvanized	32" to 48" in width, 42" to 60" in length
301480	Galvanized	Fit-Rite™ standard Hatch Protector, For Unique Applications
301481	Galvanized	Fit-Rite™ large Hatch Protector, For Unique Applications



LadderGuard™

Fall Prevention for Fixed Ladders

Meets OSHA Requirements

1910.29(b) and 1926.502(b)

Features:

- An OSHA compliant fall prevention solution for fixed ladders
- Modular components makes it easy to bring through a hatch
- Non-penetrating design maintains the watertight integrity of the roof
- Adjustable ladder connectors closes off the gap between the fixed ladders and LadderGuard rails
- Accommodates both round and square fixed ladder handrails



OSHA Compliant

Garlock Safety Systems LadderGuard keeps people away from the fall edge by creating an OSHA approved barriers to the left and right of the leading edge. It prevents people from taking a sharp turn at the top of the ladder and coming with 6' of the fall edge. Garlock's LadderGuard is third party certified to be OSHA compliant.

Modular Design

Its modular design breaks down into manageable pieces to reduce carrying weight and allows it to be brought up to the roof through standard sized hatches. The adjustable ladder connectors provide a wide range of application flexibility.

Putting Safety at the Top

For the utmost in safety, select from either the yellow or galvanized version with a color matched EasyFit™ self-closing gate. As soon as someone walks down the protective corridor they will step onto the roof and the gate will automatically close behind them protecting the worker and keeping them safe.

Why Choose Garlock?

- Rigorously Tested to Exceed OSHA & ANSI Standards
- In-House Engineering
- 100+ Years of Industry Experience
- Full Passive Fall Prevention Portfolio
- Custom Engineered Products Available

Features



Non-penetrating weighted base maintains a watertight roof.



Ladder connectors close off the gap between the fixed ladder and the LadderGuard.



Models equipped with EasyFit gate provided an extra level of safety.



5' rails with ladder connectors ensure workers are at least 6' onto the roof before they exit.



Auxiliary ports for connecting warning lines or guardrail system.



Accommodates square or round fixed ladder components.

Specifications

Top rail height	42"
Midrail height	21
Rails	16-gauge steel, 5' long, yellow or galvanized
Base	3/8" thick, six ports, galvanized
Ladder connectors	Steel, adjustable between 24" and 34"
EasyFit gate	Powder coated plate or galvanized

Due to continuous improvement, specifications are subject to change without notice.

LadderGuard Kits

449-001-001	6' system complete, without gate, safety yellow
449-001-600	6' system complete, without gate, galvanized
449-002-001	6' system complete, with EasyFit gate, safety yellow
449-002-600	6' system complete, with EasyFit gate, galvanized
449-003-600	6' system complete, modular Fit-Rite components, galvanized
449-004-600	6' system complete, modular Fit-Rite components, with gate, galvanized



Maintenance Hole Fall Prevention System

Meets OSHA Requirements

1926.502(b)(11) 1926.502(b)(13)



Features:

- OSHA compliant Maintenance Hole fall prevention systems keeps workers at ground level safe
- Designed for round holes from 22" up to 49" and square holes measuring 22" to 40"
- 42" safety yellow rails with red and white reflective sections for high visibility
- Choose between the 5' swing gate version for construction or the self-closing gate version for general industry
- Can be securely anchored to the surface (optional, user provided)



OSHA Compliant

Whether you refer to them as access covers, sewer covers, man-hole covers, hatch covers, or utility access points, once uncovered OSHA calls these hazards by just one name. They are all classified as holes under OSHA 1926.501(b)(4). The Garlock Safety Systems Maintenance Hole fall prevention system provides a fully OSHA-compliant system to protect workers from this danger. It is third-party approved to assure you have a true and fully OSHA-compliant fall prevention solution in place. Two versions are available. P/N 427-001-001 has a 5' swing gate that meets and exceeds the construction OSHA standard and P/N 427-002-001 has an EasyFit self-closing gate for general industry standards.

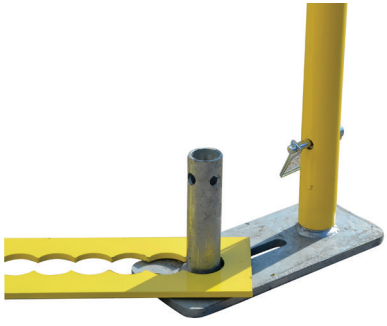
Maximum Productivity

Virtually anyone can set up the system ensuring compliance in as little as 15 minutes. Set the four bases on the ground, place the adjustable retaining legs over the base posts, slip in the rails and pin in place. It couldn't be easier to set up and take down for short term or long term work.

Why Choose Garlock?

- Rigorously Tested to Exceed OSHA & ANSI Standards
- In-House Engineering
- 100+ Years of Industry Experience
- Full Passive Fall Prevention Portfolio
- Custom Engineered Products Available

Features



Simple base accepts rail which is pinned into place.



L-shaped legs lock the system into place ensuring OSHA compliance.



Legs are adjustable to fit a wide range of hole sizes.



Red and white safety tape for high visibility.



Most popular version features a 58" swing gate

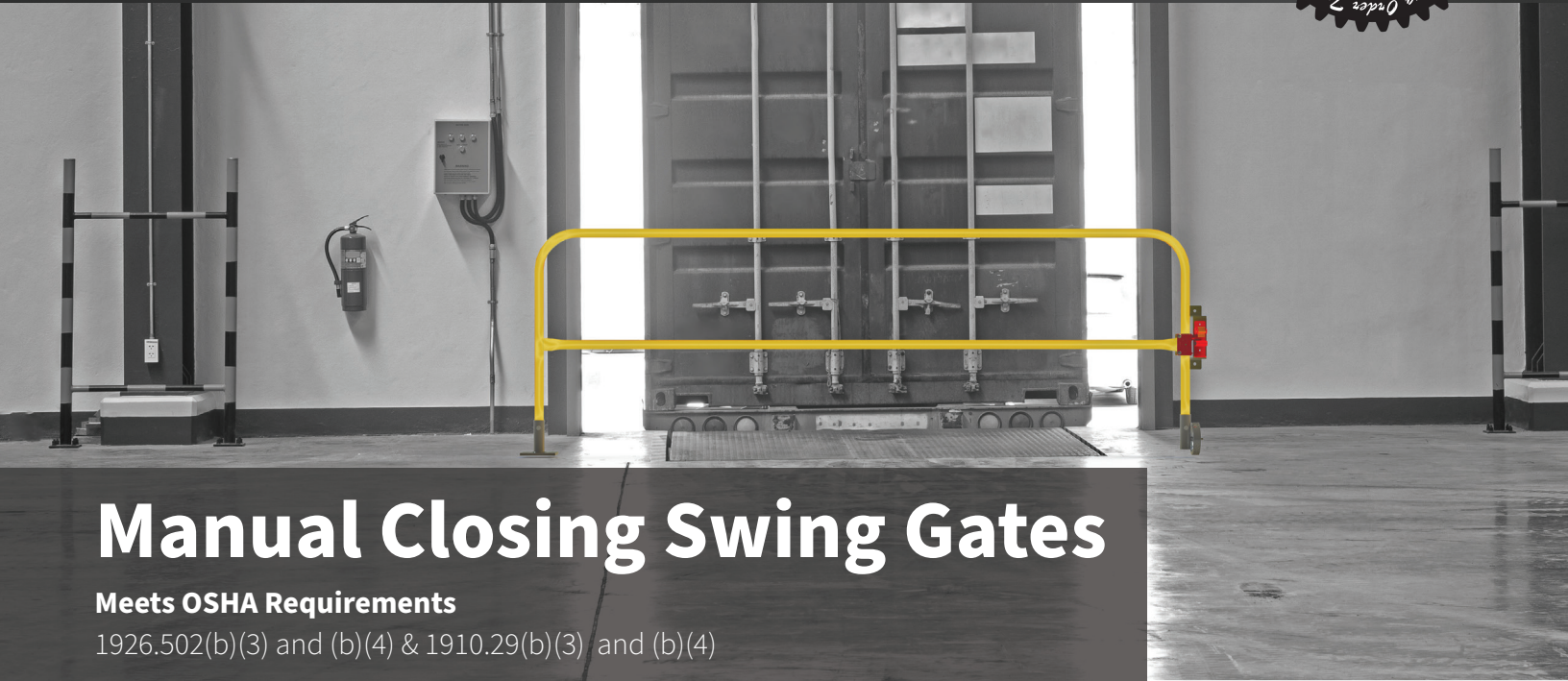


Four leg design for round or square holes.

Specifications

	P/N 427-001-001	P/N 427-002-001
Circle Hole Sizes	22" up to 49"	22" up to 49"
Square Hole Sizes	22" up to 40"	22" up to 40"
Top Rail Height	42"	42"
Mid Rail Height	20"	20"
Door Opening Width	58"	29.6"
Rail Finish	Safety yellow powder coat with reflective tape	Safety yellow powder coat with reflective tape
Anchoring	Non-penetrating freestanding design, base anchoring optional (user provided)	Non-penetrating freestanding design, base anchoring optional (user provided)
Approximate Shipping Weight	150 lbs.	150 lbs.

Due to continuous improvement, specifications are subject to change without notice.



Manual Closing Swing Gates

Meets OSHA Requirements

1926.502(b)(3) and (b)(4) & 1910.29(b)(3) and (b)(4)

Protect loading docks, stairways, and elevated loading points with a workplace swing gate system. Two styles are available, Freestanding and Floor Mounted and they are available in sizes ranging from 4 to 12 feet long. Both versions feature an easy to use and OSHA compliant latching mechanism that assures workers are properly protected from fall hazards.

Freestanding Swing Gate

The Freestanding version can be installed anywhere using Garlock Safety System's Railguard 200™ Bases in a matter of minutes without tools. Other permanent mounting options are also available. Available in 1' increments up to 12', safety yellow only.



Freestanding Swing Gate;
Bases Sold Separately

Floor Mounted Swing Gate

The Floor Mounted Swing Gate is a simple and versatile solution. This solution includes a latching mechanism that can be mounted to a wall and a Floor Mounted hinge post that once anchored to the floor provides a simple and compliant solution. The kit is designed to accept any length RailGuard 200 rail (sold separately) so that you can choose the size that fits your application.



Floor Mounted Swing Gate;
Railing sold separately

Why Choose Garlock Safety Systems™?

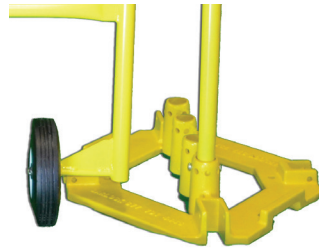
- Rigorously Tested to Exceed OSHA & ANSI Standards
- In-House Engineering
- Full Passive Fall Prevention Portfolio
- Custom Engineered Products Available

Features

Freestanding Swing Gate



Freestanding Latch Assembly

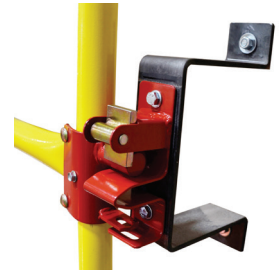


Wheel has clearance to work with RailGuard 200™ base

Floor Mounted Swing Gate



Integrated Wheel



Wall Mounted Latch

Specifications

	Freestanding Swing Gate	Floor Mounted Swing Gate
Closing Method	Manual	
Sizes Available	4' - 12' in 1' increments	Purchase Railguard 200 Size that fits your application
Rail Height	42"	
Finish	Safety Yellow Only	Safety Yellow or Galvanized RailGuard 200 Sold Separately
Items Included:		
Hinge Post	X	
Post and Latch	X	
Floor Mounted Hinge		X
Wall Mounted Latch		X
Rail	X	Sold Separately

ScreenGuard™

Skylight Protection System

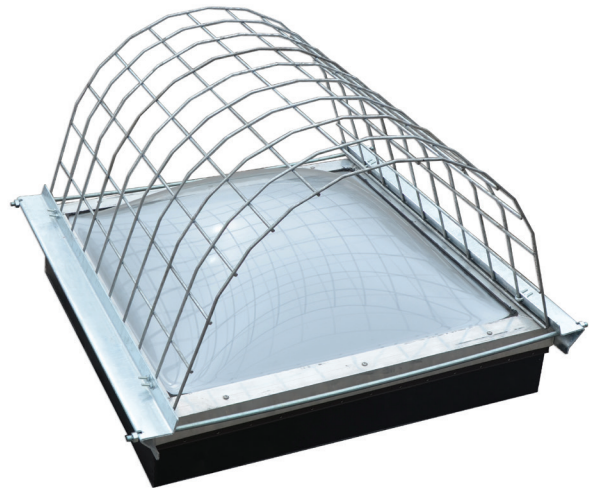
Meets OSHA Requirements

1926.501(b) (4) CAL OSHA 3212(b) and (e)

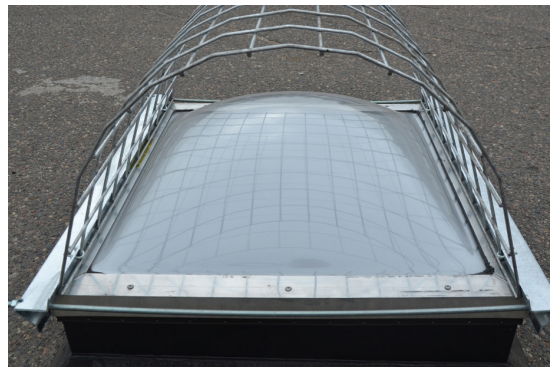
Easy Mounting, OSHA compliant solution to limit your liability and protect your employees. New simplified compression fit design means no mechanical fasteners penetrate either the roof or the skylight maintaining water integrity of the roof. Galvanized for resistance to the elements.

Features and Benefits:

- Affordable protection.
- Withstands up to 450 pounds of dynamic force.
- Standard and custom sizes available.
- Compression fit to the skylight frame to maintain watertight integrity. Does not contact the roof.
- Galvanized to resist corrosion.



Rugged Compression Fit Design



Ample Skylight Dome Clearance

Why Choose Garlock Safety Systems™?

- Rigorously Tested to Exceed OSHA & ANSI Standards
- In-House Engineering
- 100+ Years of Industry Experience
- Full Passive Fall Prevention Portfolio
- Custom Engineered Products Available

Specifications

Maximum skylight frame width: 48"

Load Ratings

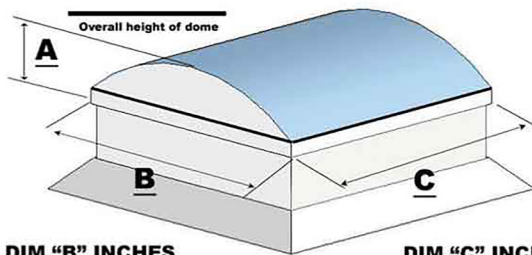
- 2' x 2'500 lbs.
- 2' x 3'500 lbs.
- 3' x 3'500 lbs.

- 3' x 4'500 lbs.
- 4' x 4'500 lbs.
- 4' x 5'500 lbs.
- 4' x 6'500 lbs.
- 4' x 7'500 lbs.
- 4' x 8'440 lbs.

Standard Sizes	A	B	C
2424	7	24	24
2828	8	28	28
2852	8	28	52
3636	10	36	36
3652	10	36	52
3676	10	36	76
4242	12	42	42
4280	12	42	80
5252	14	52	52
5276	14	52	76
5296	14	52	96

Skylight Protection Configurator

DIM "A" INCHES



DIM "B" INCHES

DIM "C" INCHES



Self-Closing Gates

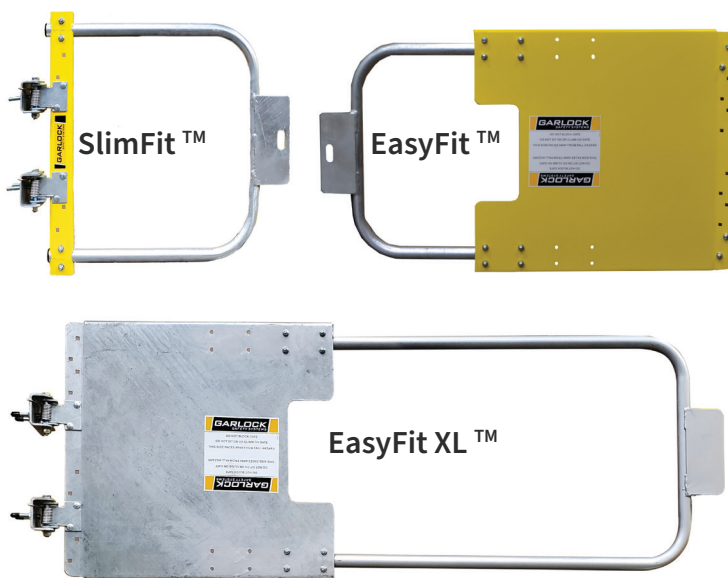
SlimFit™, EasyFit™, EasyFit XL™

Meets OSHA Requirements

1910.29(b) and 1926.502(b)

Features:

- OSHA compliant family of self-closing gates for indoor or outdoor use
- Universal mounting to 1" – 2" square or round hinge posts or can be wall-mounted
- Vertical hinge adjustment capability for greater application flexibility
- Galvanized slide and hinges for long life
- Slot in large slide plate makes it easy add a lock for added security and control



OSHA Compliant:

Self-closing gates are an important component of OSHA compliance for access egress points such as crossovers, ladders, platforms in-plant or rooftop. Choose from three different versions to meet your application needs. They are ideal for fall prevention, access control, and pedestrian traffic management.

Choosing the Right Gate Width:

If it looks like the gate is between 17" and 28" the SlimFit will work just fine and is more economical. If the opening seems more like it's between 17" and 48" the EasyFit is an easy choice. If the opening is large, say 48" to 60" then go with the EasyFit XL.

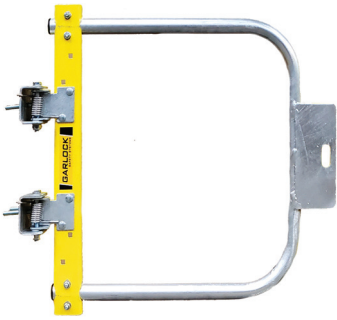
Features and Flexibility:

All our self-closing gates can open to the left or right and feature a galvanized slide for long life indoors or out. The SlimFit has a yellow slide plate and often requires the slide to be cut for the optimal fit. EasyFit gates can come with either a galvanized or is powder-coated safety yellow. All have the ability to change the vertical hinge positions which is helpful if there happen to be obstructions on the mounting post such as when mounting it to RailGuard 200 railings.

Why Choose Garlock?

- Rigorously Tested to Exceed OSHA & ANSI Standards
- In-House Engineering
- 100+ Years of Industry Experience
- Full Passive Fall Prevention Portfolio
- Custom Engineered Products Available

Features



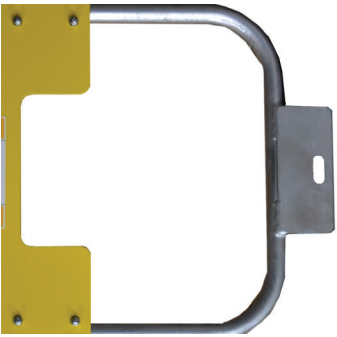
Fits openings between 14" and 30"



Fits openings from 17" to 48"



Fits openings from 17" to 60"



Slotted for lock-out clasp



Vertically adjustable hinges for installation flexibility



SlimFit gate for narrow openings

Specifications

Closing method	Spring loaded
SlimFit	Fits openings between 14" and 30"
EasyFit	Fits openings from 17" to 48"
EasyFit XL	Fits openings from 17" to 60"
Pipe finish	Slide and hinges galvanized, slide plate galvanized, safety yellow or custom colors

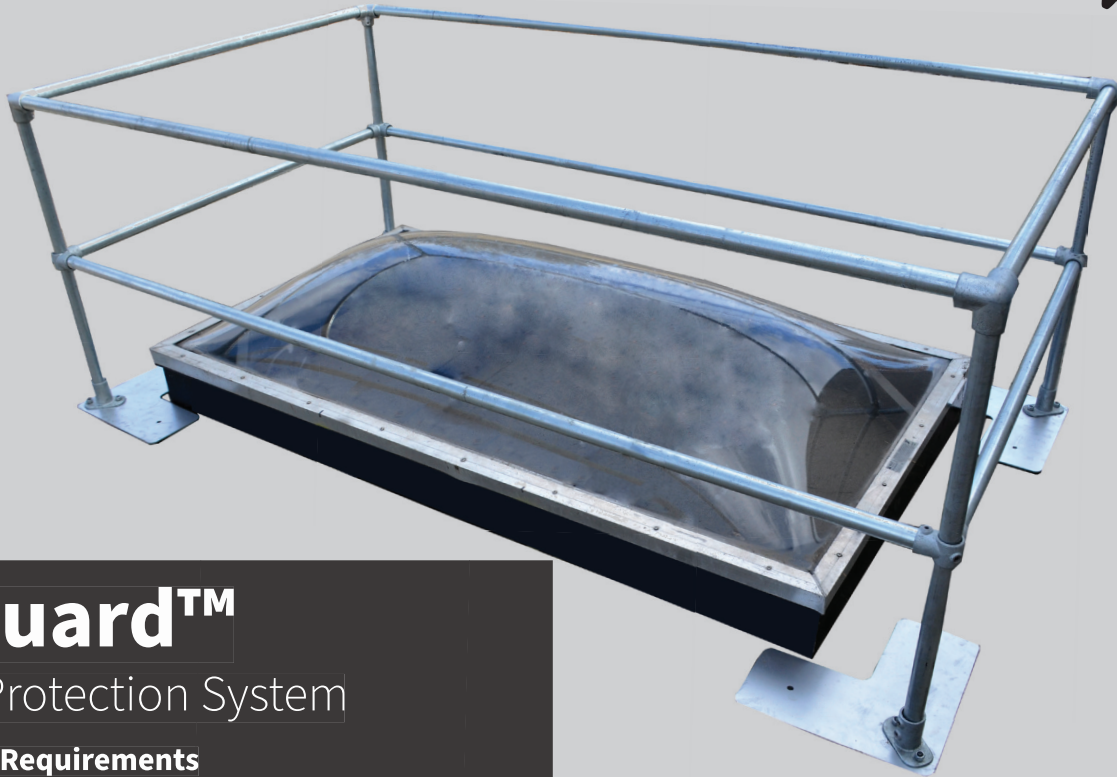
Hinges feature vertical height adjustability for application versatility.

SlimFit requires tubes to be cut for a perfect fit.

Due to continuous improvement, specifications are subject to change without notice.

FitRite Pipe Options

412-001-001	SlimFit 14"-30" adjustable self-closing spring loaded gate, safety yellow
301534	EasyFit 17"-48" adjustable self-closing spring loaded gate, safety yellow
301525	EasyFit 17"-48" adjustable self-closing spring loaded gate, galvanized
301555	EasyFit XL 17"-60" adjustable self-closing spring loaded gate, safety yellow
301556	EasyFit XL 17"-60" adjustable self-closing spring loaded gate, galvanized



SkyGuard™

Skylight Protection System

Meets OSHA Requirements

1926.501(b) (4) CAL OSHA 3209(b)

Garlock Safety System's SkyGuard is your flexible and modular solution for protecting skylights, smoke hatches, and other openings. Fully OSHA compliant, because with Garlock Safety, we Leave No Doubt when it comes to worker safety.

- OSHA compliant with third-party certification
- Modular design for out of box fit or simple on-site tube cutting for custom sizes
- Galvanized bases, stanchions and fittings for lasting durability
- Standard rails finishes are galvanized or safety yellow, custom rails colors available
- Bases come standard with rubber pads to protect delicate roofing materials
- Freestanding non-penetrating design prevents leaks and maintains roof warranty
- Fits skylights from as small as 3' up to 9' in either direction

Why Choose Garlock Safety Systems™?

- Rigorously Tested to Exceed OSHA & ANSI Standards
- In-House Engineering
- Full Passive Fall Prevention Portfolio
- Custom Engineered Products Available

Features



1/4" thick heavy duty steel base with galvanized finish ensure OSHA compliancy and long lasting durability.



Modular design for easy on site customization if require



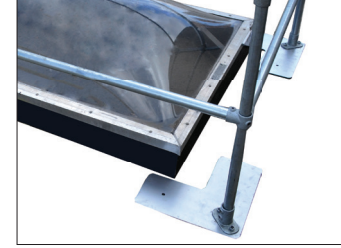
Precut galvanized stanchions guarantees OSHA compliant height.



Galvanized, safety yellow or customer colored rails to match building aesthetics.



Factory installed rubber pads protects all types of roofs without damage.



Freestanding design with no drilling or anchoring eliminates roof leaks and maintains full roof warranty.

Specifications

OSHA compliant top rail height	42"
OSHA compliant mid rail height	21"
Railing	1.66" in diameter, .14" wall thickness, steel
Galvanized base	18" x 18" wide by .25" thick
Base and fittings	Galvanized
Rails and stanchions	Galvanized, safety yellow or custom colors
443-005-001 Safety yellow rails	Fits 96" x 110" skylights out of the box Can be cut down to fit skylights from 36" x 100"
443-004-600 Galvanized rails	Fits 96" x 110" skylights out of the box Can be cut down to fit skylights from 36" x 100"
443-003-001 Safety yellow rails	Fits 48" x 60" skylights out of the box Can be cut down to fit skylights from 36" x 60"
443-002-600 Galvanized rails	Fits 48" x 60" skylights out of the box Can be cut down to fit skylights from 36" x 60"

Due to continuous improvement, specifications are subject to change without notice.



SlabGrabber™

Perimeter Clamp

Meets OSHA Requirements

1926.502(b)

The clamp system complies with OSHA standards and provides a fast, safe guardrail solution for new construction slab or deck applications.

Improved Productivity:

Perimeter systems save labor and improve efficiency over visual warning lines after setup, you can safely work all the way to the edge of the deck structure without being tied off. Studies prove that workers are 50% more productive when not being restrained.

Fast Setup:

Quickly install the SlabGrabber on any slab or deck from 2" to 24" in depth with the simple tensioning handle. The easy tensioning adjuster can be adjusted by hand or use a speed wrench for maximum productivity.

Heavy Duty Design:

The robust tube design is durable and built for daily use and long life. With no exposed adjusting rods or threads, the SlabGrabber is better protected from the elements. All components are powder coated for long life.

Rugged Construction:

Every component of the SlabGrabber is engineered for the rugged construction market. From the reinforced upper and lower clamp brackets to the oversized 2x4 pockets (fits up to 2X6), SlabGrabber is ready to work. The integrated toe-board brackets provide required debris protection.

Why Choose Garlock Safety Systems™?

- Rigorously Tested to Exceed OSHA & ANSI Standards
- Full Passive Fall Prevention Portfolio
- In-House Engineering
- Custom Engineered Products Available

Features



Tighten clamp manually or use a speed wrench.



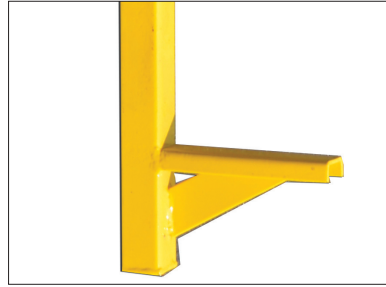
Large pocket for 2 x 4's.



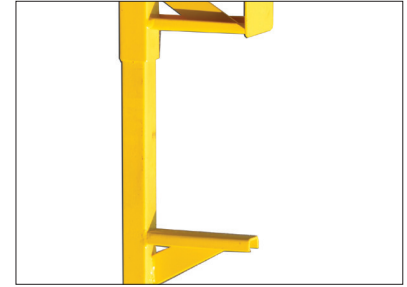
Integrated toe-board bracket.



Clamps slabs from 2" to 24"



HD reinforced mounts.



No exposed adjuster rods.

Specifications

Overall Dimensions	4" x 8.5" x 54"
Spacing	Recommended 6ft. max. 8ft.
System Includes	1 stanchion and integrated clamp
Clamping Range	Adjustable from 2" - 24"
Weight (lbs.)	4

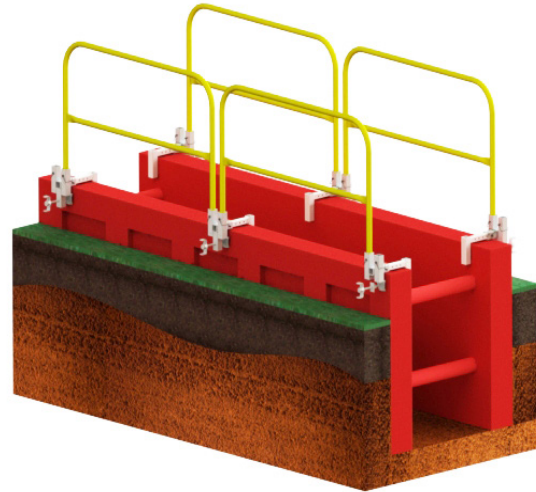
Garlock Safety Systems does not provide the 2X4 wood used for rail and therefore cannot attest to suitability or set thereof for this application.

w.w.Cannon, Inc.
Design. Layout. Build. Install.
1-800-442-3061
www.wwcannon.com

GARLOCK
SAFETY SYSTEMS

Trench Box Clamp System

Meets OSHA Requirements
1926.502(b)

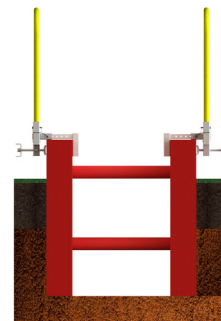


OSHA compliant leading edge fall protection system for use with trench boxes or trench shields.

- Meets OSHA requirements
- Heavy duty construction and zinc plated
- Wide adjustment range from 1" to 9" thick trench walls
- Quick installation
- Uses a wide range of RailGuard 200™ rails in safety yellow or galvanized finish

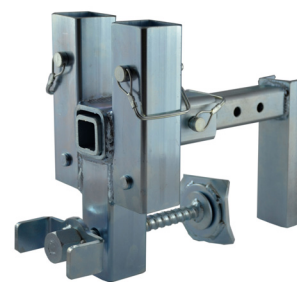
Total Trench Box Safety

Trench boxes provide safety for workers in the trench. What about workers working near the fall edge of the trench? For above ground fall prevention rely on Garlock Safety System's heavy duty trench box clamp and RailGuard 200 railing.



Fast Setup

One person can quickly install the Trench Box Clamp to trench boxes ranging from 1" to 9" thick. The heavy duty tensioner screw can be tightened by hand or for maximum productivity use a speed wrench. Use tools to reach the required torque of 90 foot pounds. Install the railing and workers are now protected and can safely work near the trench edge.



Why Choose Garlock Safety Systems™?

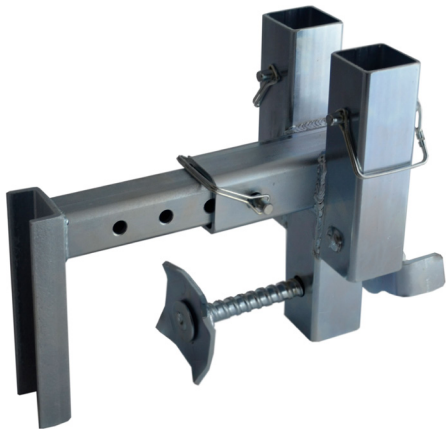
- Rigorously Tested to Exceed OSHA & ANSI Standards
- In-House Engineering
- Full Passive Fall Prevention Portfolio
- Custom Engineered Products Available

Features

- OSHA compliant trench box fall protection keeps above ground workers safe
- Zinc plated for lasting durability
- Wide clamping range fits most trench boxes
- Choose between RailGuard 200 or RailGuard 200 Fit-Rite™ solutions
- Wide range of railing sizes and colors

Specifications

Clamping Range	1" to 9"
Rail Height	42" above the trench box
Finish	Zinc Plated
Weight	14 lbs.
Required Final Torque	90 Foot Pounds



GARLOCK
SAFETY SYSTEMS

©2019 Garlock Safety Systems. All rights reserved.



161837 Rev A