



FitRite™ Safety Rail

Modular Safety Guardrail System

Meets OSHA Requirements
1910.29(b) and 1926.502(b)

Features:

- OSHA compliant and third-party verified when installed per the manufacture's specifications
- A modular system consisting of straight galvanized pipe and a wide variety of fittings that can be used to fit any project
- Choose from three different predrilled stanchions, straight, inclined, or curved
- Hot dipped galvanized finish for long-lasting value
- Easy to cut and assemble using the included set screws



Customizable:

Custom perimeter safety rail just got easier with RailGuard™ FitRite railing systems. FitRite is a modular system that allows Complete customization for rooftops, mezzanines, loading docks or any other difficult to solve fall prevention situations.

Assembled on-site to fit your application:

1. Choose from three different styles of architecturally pleasing stanchion kits: Straight, curved or inclined.
2. Select the base style: Non-penetrating metal or Set and Prevent, standing seam, or permanent mount.
3. Order sections of 10' or 21' rails.

Multiple fitting types are available to construct unique fall prevention solutions for both inside plant and rooftop applications.

Beyond perimeter protection:

FitRite can be utilized throughout your facility for everything from separating people from hazards, machine guarding, mezzanines, loading docks, ladder, or stairway protection. A variety of self-closing and swing gate options are available to complete your system.

Rugged construction:

FitRite is designed for rugged outdoor or indoor use with standard galvanized finish. Pipe used for rails and stanchions can be custom colored, fittings are always galvanized.

Why Choose Garlock?

- Rigorously Tested to Exceed OSHA & ANSI Standards
- In-House Engineering
- 100+ Years of Industry Experience
- Full Passive Fall Prevention Portfolio
- Custom Engineered Products Available

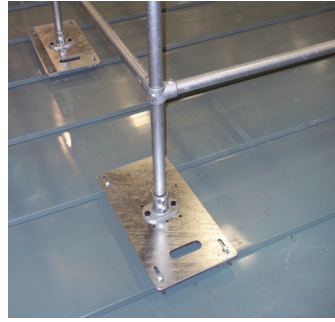
Options



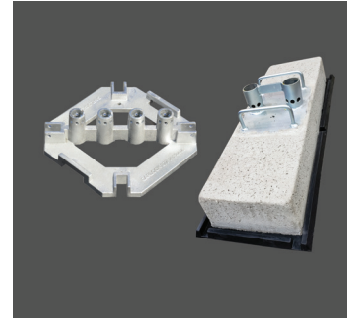
Straight, inclined or curved stanchion kits for use with bases or deck plates



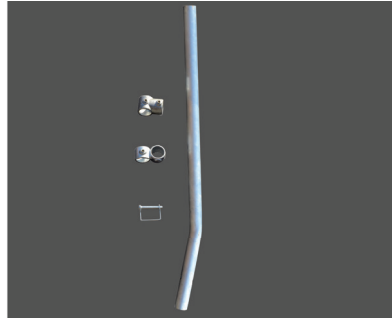
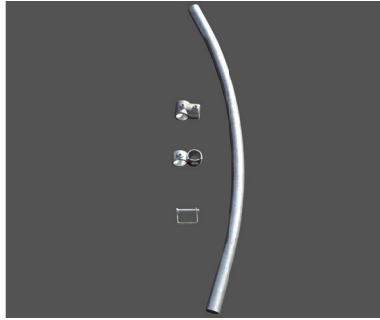
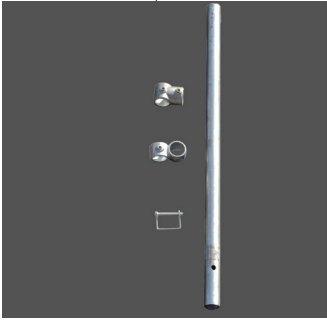
Multiple fitting choices



FitRite system on standing seam metal roof



Non-penetrating weighted bases



Mid stanchion kits include stanchion, pin, mid-rail crossover fitting and tee fitting at the top. End stanchion kits include stanchion, pin, mid-rail crossover fitting and 90-degree elbow fitting at the top. Kits available for metal bases or for use with standing seam deck plates.



Permanent mount bases (Multiple choices)

Specifications

Stanchion kits	Top rail 42" high, mid rail 21" high
Stanchion kit finish	Galvanized or custom color over galvanized stanchions, fittings galvanized
Pipe type	1.25" schedule 40 pipe
Pipe length	21' long or 10.5' nominal lengths for lower shipping costs
Pipe finish	Galvanized or custom color over galvanized

Due to continuous improvement, specifications are subject to change without notice.

FitRite Pipe Options

429829	21 ft. rail pipe, galvanized
427302	10 ft. (10.5 ft. nominal) rail pipe, save freight cost vs. 21 ft. pipe, galvanized
429829S	21 ft. rail pipe, safety yellow
427302G+yellow	10 ft. (10.5 ft. nominal) rail pipe, save freight cost vs. 21 ft. pipe, safety yellow



©2023 Garlock Safety System, All rights reserved.

