

Maintenance Hole Fall Prevention System

Meets OSHA Requirements

1926.502(b)(11) 1926.502(b)(13)



Features:

- OSHA compliant Maintenance Hole fall prevention systems keeps workers at ground level safe
- Designed for round holes from 22" up to 49" and square holes measuring 22" to 40"
- 42" safety yellow rails with red and white reflective sections for high visibility
- Choose between the 5' swing gate version for construction or the self-closing gate version for general industry
- Can be securely anchored to the surface (optional, user provided)



OSHA Compliant

Whether you refer to them as access covers, sewer covers, man-hole covers, hatch covers, or utility access points, once uncovered OSHA calls these hazards by just one name. They are all classified as holes under OSHA 1926.501(b)(4). The Garlock Safety Systems Maintenance Hole fall prevention system provides a fully OSHA-compliant system to protect workers from this danger. It is third-party approved to assure you have a true and fully OSHA-compliant fall prevention solution in place. Two versions are available. P/N 427-001-001 has a 5' swing gate that meets and exceeds the construction OSHA standard and P/N 427-002-001 has an EasyFit self-closing gate for general industry standards.

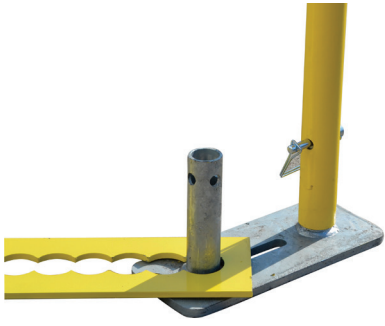
Maximum Productivity

Virtually anyone can set up the system ensuring compliance in as little as 15 minutes. Set the four bases on the ground, place the adjustable retaining legs over the base posts, slip in the rails and pin in place. It couldn't be easier to set up and take down for short term or long term work.

Why Choose Garlock?

- Rigorously Tested to Exceed OSHA & ANSI Standards
- In-House Engineering
- 100+ Years of Industry Experience
- Full Passive Fall Prevention Portfolio
- Custom Engineered Products Available

Features



Simple base accepts rail which is pinned into place.



L-shaped legs lock the system into place ensuring OSHA compliance.



Legs are adjustable to fit a wide range of hole sizes.



Red and white safety tape for high visibility.



Most popular version features a 58" swing gate



Four leg design for round or square holes.

Specifications

	P/N 427-001-001	P/N 427-002-001
Circle Hole Sizes	22" up to 49"	22" up to 49"
Square Hole Sizes	22" up to 40"	22" up to 40"
Top Rail Height	42"	42"
Mid Rail Height	20"	20"
Door Opening Width	58"	29.6"
Rail Finish	Safety yellow powder coat with reflective tape	Safety yellow powder coat with reflective tape
Anchoring	Non-penetrating freestanding design, base anchoring optional (user provided)	Non-penetrating freestanding design, base anchoring optional (user provided)
Approximate Shipping Weight	150 lbs.	150 lbs.

Due to continuous improvement, specifications are subject to change without notice.