

Set and Prevent™ RailGuard 200™ Base

Meets OSHA Requirements

1929.29(b) and 1926.502(b)

OSHA COMPLIANT

Garlock Safety Systems Set and Prevent RailGuard 200 base is the perfect long term fully OSHA compliant fall prevention rooftop solution.

- Meets or exceeds all federal and state OSHA regulations.
- Third party OSHA certifications.
- Foolproof, can only be installed in OSHA compliant orientations.

LOWER COST

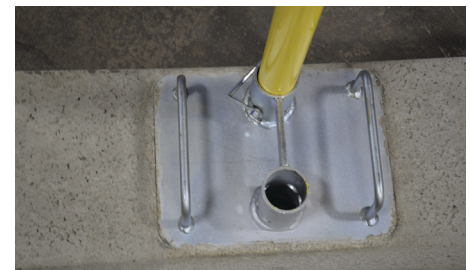
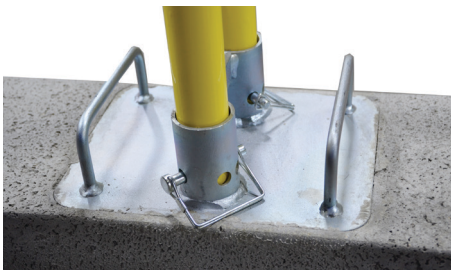
Efficient high volume production processes and natural materials provide low per unit costs that results in significant savings.

- OSHA compliant at a fraction of the price.
- 27% savings over our traditional base at the time of product introduction.
- Inexpensive rubber pad optional.

BEST VALUE

Take a moment to compare features and compare the price, it will quickly become evident that Garlock Safety Systems Set and Prevent base provides best in class value.

- Lowest acquisition cost and lowest total cost of ownership.
- Long term durability and installation flexibility.
- From Garlock Safety the trusted advisor and industry leader.



Why Choose Garlock Safety Systems™?

- Rigorously Tested to Exceed OSHA & ANSI Standards
- Full Passive Fall Prevention Portfolio
- In-House Engineering
- Custom Engineered Products Available

Features



Heavy duty steel insert with integrated handles and galvanized plating for long lasting durability.



Dual port design with connecting bar allows base transporter to be used for easy placement and positioning.



Made in the USA, OSHA compliant, feature rich plus lowest cost means the best value for long term Set and Prevent fall prevention.

Specifications

Set and Prevent Base Specifications

Material	Mechanically vibrated concrete with high aggregate content
Compressive breaking strength	8,500 PSI (typical cinder blocks 1,900 PSI and roofing pavers 5,000 PSI)
Rebar	3/8" galvanized steel with complete interior coverage
Life cycle testing	Passed independent third party testing, ASTM C666-15, "Standard Test Method for Resistance of Concrete to Rapid Freezing and thawing". Test results are available upon request.
Weight	103 lbs.
Insert	Galvanized steel with rebar
Color	Natural stone and galvanized
Rail Ports	2 ea.
Length	29.5 in.
Width	9.5 in.
Height	4.5 in.
Country of Origin	USA
Warranty	20 years against defects in materials and workmanship
Part Number	411-002-000

Set and Prevent Pad Specifications

Weight	6 lbs.
Color	Black
Material	Recycled rubber
Length	32 in.
Width	12 in.
Height	0.88 in.
Country of Origin	China
Part Number	156324

GARLOCK
SAFETY SYSTEMS

©2021 Garlock Safety Systems. All rights reserved.



161839 REV A
11/2021