



## SpeedGuard™ II

Flatbed truck fall prevention

Meets OSHA Requirements

1910.29(b) & 1926.502(b)

### Features:

- Contains everything needed to provide fall protection for 48' or 53' flatbed trucks
- Includes ladder for truck access and safety gate
- Tool-free installation, rail holders drop into the truck stake pockets, rails drop into rail holders
- Available with a rough all-terrain transport cart that stores all components or without a cart for custom onsite storage
- Installs in under 10 minutes with two workers
- Meets OSHA requirements 1910.29(b) & 1926.502(b)



### OSHA Compliant

OSHA 1910.28(b)(1)(i) states that the employer must ensure that each employee on a walking-working surface with an unprotected side or edge that is 4 feet (1.2 m) or more above a lower level is protected from falling by Guardrail systems, safety nets or personal fall protection systems, such as personal fall arrest, travel restraint, or positioning systems. Flatbed trucks are more than 4' in height so workers need to be protected when they are on them.

### Simple and quick protection:

Installation couldn't be easier. Zinc-plated rail holders drop into the stake pockets on the truck and the rails drop into the rail holders, all tool free. SpeedGuard II can be set up by two people in under 10 minutes with minimal operational interference.

### Versatility

Both kits contain everything needed to protect 48' or 53' flatbeds. Each kit comes with a ladder for safely getting on top of the flatbed and a ladder safety gate. Choose between the kit with an all-terrain transport/storage cart on the one without for a custom onsite storage solution.

### Why Choose Garlock?

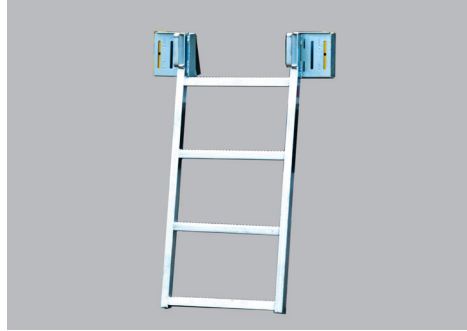
- Rigorously Tested to Exceed OSHA & ANSI Standards
- In-House Engineering
- 100+ Years of Industry Experience
- Full Passive Fall Prevention Portfolio
- Custom Engineered Products Available



# Features



Kit with transport and storage cart.



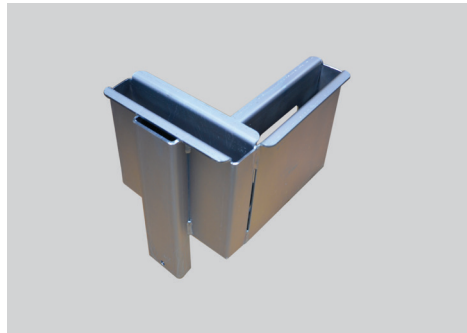
Included ladder for safe ingress and egress.



Safety gate protects ladder opening.



Tool free rail holders drop into stake pockets.



Corner rail holders close off the rear of the flatbed.



Full protection can be set up in 10 minutes with two workers.

# Specifications

	P/N 301516	P/N 301535
Rail height	42"	42"
Rails	1.62" diameter, 16 gauge	1.62" diameter, 16 gauge
Rail finish	Powdered coated safety yellow	Powdered coated safety yellow
Rail holder material	Steel, 7 gauge	Steel, 7 gauge
Rail holder finish	Zinc plated	Zinc plated
Application	48' and 53' flatbeds with stake pockets	48' and 53' flatbeds with stake pockets
Storage	Transport/storage cart	None, customer provided

Due to continuous improvement, specifications are subject to change without notice.