

# Leading Edge Fall Prevention Clamp Solutions

For Roofing and Construction

Meets OSHA Requirements  
1926.502(b)



The TurboRail stanchion is adjustable in height and accepts loop-end rails that take little space when stored. The button lock system makes set up and teardown fast and easy.



The Combo Clamp has an integrated standalone screw down bracket. It accepts all three stanchion types and the preformed rail adapter.

Loop-end rails or 2X4 lumber can be used with the combo stanchion to create an OSHA compliant fall prevention solution



The adjustable height 2X4 lumber stanchion uses dimensional lumber to form the top rails and mid-rail. Clamp spacing is 24" less than the length of lumber used.



**Combo Clamp**

The combo clamp is our most versatile Perimeter Clamp for vertical clamping applications such as a parapet walls. The clamp accepts a wide range of stanchions. Heavy duty construction and tough zinc plating provides years of safe and reliable fall prevention.

The two-port preformed rail adapter allows the Combo Clamp to accept standard preformed rails.



## Why Choose Garlock?

- Rigorously Tested to Exceed OSHA & ANSI Standards
- In-House Engineering
- 100+ Years of Industry Experience
- Full Passive Fall Protection Portfolio
- Custom Engineered Products Available



### SlabGrabber™

Garlock’s SlabGrabber is known throughout the industry as being the safest and toughest slab clamp on the market. Using a pry bar or impact driver, it puts a death grip on the edge of the slab for the utmost in compliance, safety, and security.

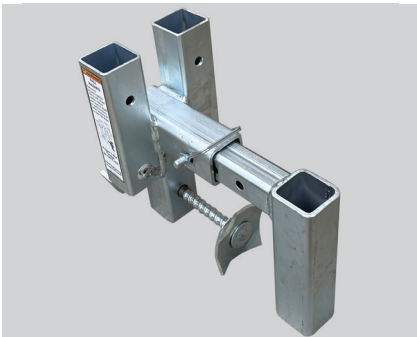
Its heavy-duty steel construction and concealed and protected thread system withstands years of abuse in the toughest construction job sites. User-provided 2” X 4” lumber is used to construct the OSHA-compliant rails and its integrated toeboard adapter keeps those at a ground level safe from fall objects.



### Perimeter Clamp System

Garlock Safety Systems perimeter clamp delivers OSHA-compliant fall prevention with two different attachment methods to suit the application. And both unique mounting methods give workers 100% unobstructed access to the roof.

When configured as a clamp, it can tightly grip parapet walls between 8” and 24”. The adjustable stanchion ensures the top rail and mid-rail are at the correct height regardless of the parapet wall height. If no suitable parapet wall exists, the clamp can be converted in seconds to a screw-down attachment system.



### Trench Box Clamp System

OSHA compliant leading edge fall protection system for use with trench boxes or trench shields. Trench boxes provide safety for workers down in the trench. What about workers working near the fall edge of the trench? For above-ground fall prevention rely on Garlock Safety System’s heavy-duty trench box clamp and RailGuard 200™ railing.

One person can quickly install the Trench Box Clamp to trench boxes ranging from 1” to 9” thick. The heavy-duty tensioner screw can be tightened by hand or for maximum productivity use a speed wrench. Use tools to reach the required torque of 90-foot pounds.

## Part Number

P/N	Description
407482	Combo Clamp only, 6.5” to 24.5” clamping range, zinc plated
407495	TurboRail stanchion for loop-end TurboRails, safety yellow
407499	2X4 lumber stanchion, safety yellow
408428	RailGuard 200 pre-formed rail adapter, two rail ports per adapter, zinc plated
407309S	10’ Loop-end TurboRail for use as a top rail or mid-rail, safety yellow
409076S	8’ Loop-end TurboRail for use as a top rail or mid-rail, safety yellow
407311S	5’ Loop-end TurboRail for use as a top rail or mid-rail, safety yellow
407326Z	Adjustable TurboRail, 5’ to 8’ adjustment range, zinc plated
301355	SlabGrabber clamp for 2X4 lumber, sold individually, safety yellow
301282	Perimeter Clamp kit, includes 4 clamps and 4 stanchion for 2X4 lumber, safety yellow stanchion
425-001-601	Trench Box Clamp, sold individually, zinc plated