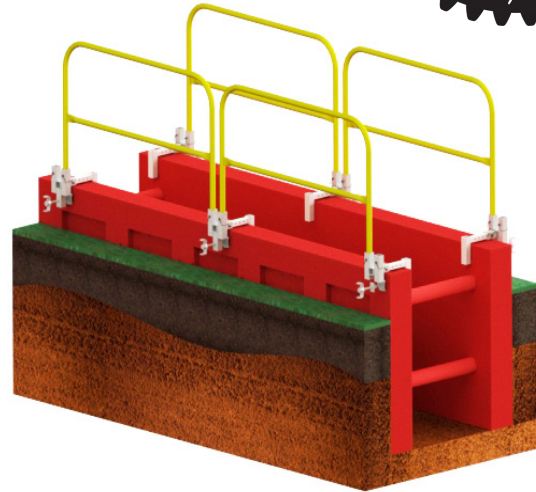


# Trench Box Clamp System

Meets OSHA Requirements  
1926.502(b)



OSHA compliant leading edge fall protection system for use with trench boxes or trench shields.

- Meets OSHA requirements
- Heavy duty construction and zinc plated
- Wide adjustment range from 1" to 9" thick trench walls
- Quick installation
- Uses a wide range of RailGuard 200™ rails in safety yellow or galvanized finish

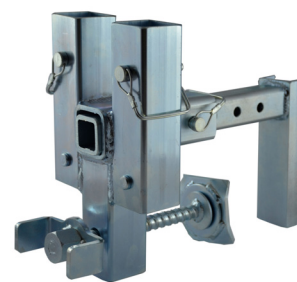
## Total Trench Box Safety

Trench boxes provide safety for workers in the trench. What about workers working near the fall edge of the trench? For above ground fall prevention rely on Garlock Safety System's heavy duty trench box clamp and RailGuard 200 railing.



## Fast Setup

One person can quickly install the Trench Box Clamp to trench boxes ranging from 1" to 9" thick. The heavy duty tensioner screw can be tightened by hand or for maximum productivity use a speed wrench. Use tools to reach the required torque of 90 foot pounds. Install the railing and workers are now protected and can safely work near the trench edge.



## Why Choose Garlock Safety Systems™?

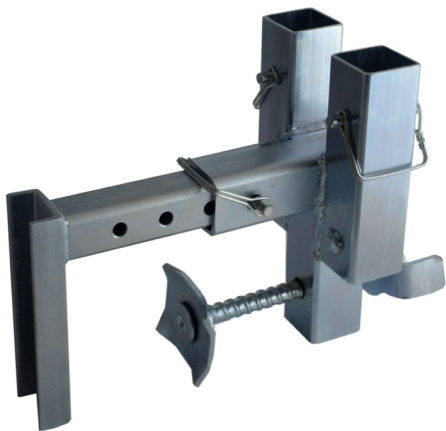
- Rigorously Tested to Exceed OSHA & ANSI Standards
- Full Passive Fall Prevention Portfolio
- In-House Engineering
- Custom Engineered Products Available

## Features

- OSHA compliant trench box fall protection keeps above ground workers safe
- Zinc plated for lasting durability
- Wide clamping range fits most trench boxes
- Choose between RailGuard 200 or RailGuard 200 Fit-Rite™ solutions
- Wide range of railing sizes and colors

## Specifications

|                       |                          |
|-----------------------|--------------------------|
| Clamping Range        | 1" to 9"                 |
| Rail Height           | 42" above the trench box |
| Finish                | Zinc Plated              |
| Weight                | 14 lbs.                  |
| Required Final Torque | 90 Foot Pounds           |



**GARLOCK**  
SAFETY SYSTEMS

©2019 Garlock Safety Systems. All rights reserved.

**www.Cannon, llc.**

Design. Layout. Build. Install.

1-800-442-3061  
www.wvcannon.com

161837 Rev A