

*"Bringing Order To Chaos"*

**w.w.Cannon, llc.**

Design. Layout. Build. Install.

1-800-442-3061

www.wwcannon.com

*"Bringing Order To Chaos"*



# Electric Chain **HOISTS**

**GS Series**

**GORBEL**  
A C L A S S A B O V E

# WHY BUY GORBEL?

Gorbel's Crane Technology and Ergonomic Lifting products are the handling equipment you need to get the job done right. Since 1977, Gorbel has specialized in overhead material handling solutions, providing the highest quality and the highest performance. Our company was built on a commitment to speed, responsiveness, and reliability, which is reflected in our near perfect on-time delivery, our focus on customer service, and the best warranty in the industry.

Our overhead handling product line has grown to include a number of products that improve safety and productivity in today's industrial environment. We offer bridge cranes and monorails in capacities to 20 ton, jib cranes in capacities to 5 ton in a variety of mounting styles, plus mobile gantries, and Intelligent Lifting Devices.

Now with the introduction of our Gorbel Electric Chain Hoists, from 1/8 ton to 5 ton capacity, we've made it even easier to find the right lifting solutions for your unique applications. A Gorbel Electric Chain Hoist is the perfect complement to your Gorbel Work Station Crane, Jib Crane, Gantry Crane, or Cleveland Tramrail System. Rely on the name that has meant superior performance at every level to provide you with a complete lifting, reliable lifting system, exactly when you need it.

By adding chain hoists to the offering, Gorbel offers the most convenient delivery and installation in the industry. From quick connect plugs to suspension plates designed for exact fit to trolleys, product selection is a snap. Plus, with 5-day quick ship offered on many capacities of work station cranes and jibs, adding a hoist for immediate delivery with the crane means everything arrives on-site at once to reduce the possibility of installation delay or downtime.





## Rugged Design and Quality Components Stand Up to Tough Environments

### Pendant Handle

Ergonomic control pendant requires low operator force and is equipped complete with E-stop.



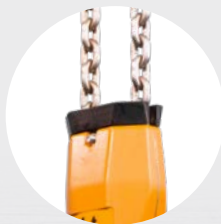
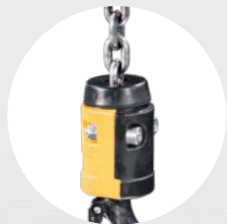
### Limit Switch

Modular upper and lower limit switches designed for durable operation.



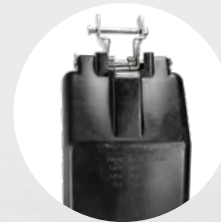
### Single and Double Fall

Our hoists are available in single and double fall configurations to meet a wide range of headroom, lifting speed, and capacity requirements.



### Chain Container

A canvas chain bag comes standard with all Gorbel hoists. Prefer a more conventional style? Select the optional plastic bucket, a sturdy but lightweight option that doesn't dent or rust like metal chain containers.



## Low Headroom Applications? Choose a Suspension Plate with your Gorbel Hoist

Our single and double hole suspension plates are the perfect option when headroom is an issue. Our suspension plates are designed for easy installation on the hoist and easy attachment to the trolley.



When ordering a hoist with a work station crane, the hoist comes fully equipped with a single hole suspension for quick attachment to the trolley. For jibs, the double hole suspension matches perfectly with the Gorbel trolley to provide a secure fit for the hoist. If you plan on moving your hoist among various locations regularly, a rigid upper hook is readily available.



# Choose from a Variety of Configurations, Capacities, and Speeds to Easily Match the Hoist to Your Exact Needs.

## Single Speed

Part Number	Base Model	Capacity (ton)	Number of Falls	Lift Speed (ft/m)	Voltage	Motor HP	Full Load Amps	Body Size	Headroom (in.)
GECH-1/8-S-	94520	1/8	1	16	460	0.40	1.10	Small	12.94
GECH-1/8-S-	94820	1/8	1	16	230	0.40	2.16	Small	12.94
GECH-1/4-S-	94522	1/4	1	16	460	0.87	1.10	Small	12.94
GECH-1/4-S-	94822	1/4	1	16	230	0.87	2.16	Small	12.94
GECH-1/4-S-	94521	1/4	1	32	115	0.48	6.50	Small	16.13
GECH-1/4-S-	94520	1/4	2	8	460	0.40	1.10	Small	16.25
GECH-1/4-S-	94820	1/4	2	8	230	0.40	2.16	Small	16.25
GECH-1/2-S-	94504	1/2	1	16	460	0.60	1.10	Small	12.94
GECH-1/2-S-	94804	1/2	1	16	230	0.60	2.20	Small	12.94
GECH-1/2-S-	94512	1/2	1	24	115	1.50	11.70	Med	16.25
GECH-1/2-S-	94522	1/2	2	8	460	0.87	1.10	Small	16.25
GECH-1/2-S-	94822	1/2	2	8	230	0.87	2.16	Small	16.25
GECH-1/2-S-	94521	1/2	2	16	115	0.48	6.50	Small	16.25
GECH-1-S-	94506	1	1	16	460	1.22	1.90	Med	16.25
GECH-1-S-	94806	1	1	16	230	1.22	1.90	Med	16.25
GECH-1-S-	94504	1	2	8	460	0.60	1.10	Small	17.88
GECH-1-S-	94804	1	2	8	230	0.60	2.20	Small	17.88
GECH-1-S-	94512	1	2	12	115	1.50	11.70	Med	18.13
GECH-2-S-	94506	2	2	8	460	1.22	1.90	Med	18.13
GECH-2-S-	94806	2	2	8	230	1.22	1.90	Med	18.13

## Dual Speed

Part Number	Base Model	Capacity (ton)	Number of Falls	Lift Speed (ft/m)	Voltage	Motor HP	Full Load Amps	Body Size	Headroom (in.)
GECH-1/8-D-	94572	1/8	1	32,8	460	0.52	1.28	Small	12.94
GECH-1/8-D-	94872	1/8	1	32,8	230	0.52	2.68	Small	12.94
GECH-1/4-D-	94573	1/4	1	32,8	460	0.64	1.68	Small	12.94
GECH-1/4-D-	94873	1/4	1	32,8	230	0.64	2.35	Small	12.94
GECH-1/4-D-	94572	1/4	2	16,4	460	0.52	1.28	Small	16.25
GECH-1/4-D-	94872	1/4	2	16,4	230	0.52	2.68	Small	12.94
GECH-1/2-D-	94552	1/2	1	32,8	460	1.50	2.00	Med	16.25
GECH-1/2-D-	94852	1/2	1	32,8	230	1.50	4.20	Med	16.25
GECH-1/2-D-	94573	1/2	2	16,4	460	0.64	1.68	Small	16.25
GECH-1/2-D-	94873	1/2	2	16,4	230	0.64	2.35	Small	16.25
GECH-1-D-	94556	1	1	24,6	460	1.77	3.70	Med	16.25
GECH-1-D-	94557	1	1	32,8	460	2.94	5.40	Large	21.56
GECH-1-D-	94856	1	1	24,6	230	1.77	5.20	Med	16.25
GECH-1-D-	94861	1	1	32,8	230	2.94	9.30	Large	21.56
GECH-1-D-	94552	1	2	16,4	460	1.50	2.00	Med	18.13
GECH-1-D-	94852	1	2	16,4	230	1.50	4.20	Med	18.13
GECH-1 1/2-D-	94574	1 1/2	1	25,6	460	4.89	7.15	Large	21.56
GECH-1 1/2-D-	94874	1 1/2	1	25,6	230	4.89	15.00	Large	21.56
GECH-2-D-	94564	2	1	32,8	460	4.89	7.10	Large	26.69
GECH-2-D-	94864	2	1	32,8	230	4.89	7.1	Large	26.69
GECH-2-D-	94556	2	2	12,3	460	1.77	3.70	Med	18.13
GECH-2-D-	94557	2	2	16,4	460	2.94	5.40	Large	24.44
GECH-2-D-	94856	2	2	12,3	230	1.77	5.20	Med	18.13
GECH-2-D-	94861	2	2	16,4	230	2.94	9.30	Large	25.81
GECH-2 1/2-D-	94565	2 1/2	1	40,10	460	7.07	16.0	Large	26.69
GECH-2 1/2-D-	94865	2 1/2	1	40,10	460	7.07	27.8	Large	26.69
GECH-3-D-	94574	3	2	12,3	460	4.89	7.15	Large	25.81
GECH-3-D-	94874	3	2	12,3	230	4.89	15.00	Large	25.81
GECH-4-D-	94564	4	2	16,4	460	4.89	7.10	Large	31.75
GECH-4-D-	94864	4	2	16,4	230	4.89	7.1	Large	31.75
GECH-5-D-	94565	5	2	20,5	460	7.07	16.00	Large	31.75
GECH-5-D-	94865	5	2	20,5	230	7.07	27.80	Large	31.75

## How to Configure Your Hoist

GECH - 1/8 - D - 32/8 - RH - 460 - 10 - 1 - C

[1] [2] [3] [4] [5] [6] [7] [8]

- [1] Capacity in Tons (1/8, 1/4, 1/2, 1, 1 1/2, 2, 2 1/2, 3, 4, 5)
- [2] Speed ([S]ingle, [D]ual)
- [3] Actual Speed (Published)
- [4] Suspension ([RH] Rigid Hook, [SSP] Single Hole Suspension Plate, [DSP] Double Hole Suspension Plate)
- [5] Voltage (115, 230, 460, 575)
- [6] Lift (10, 15, 20)
- [7] Number of Falls (1,2)
- [8] Chain container ([C]anvas, [P]lastic)

Headroom dimensions based on single hole suspension plate.

115V - single phase models, all others three phase.

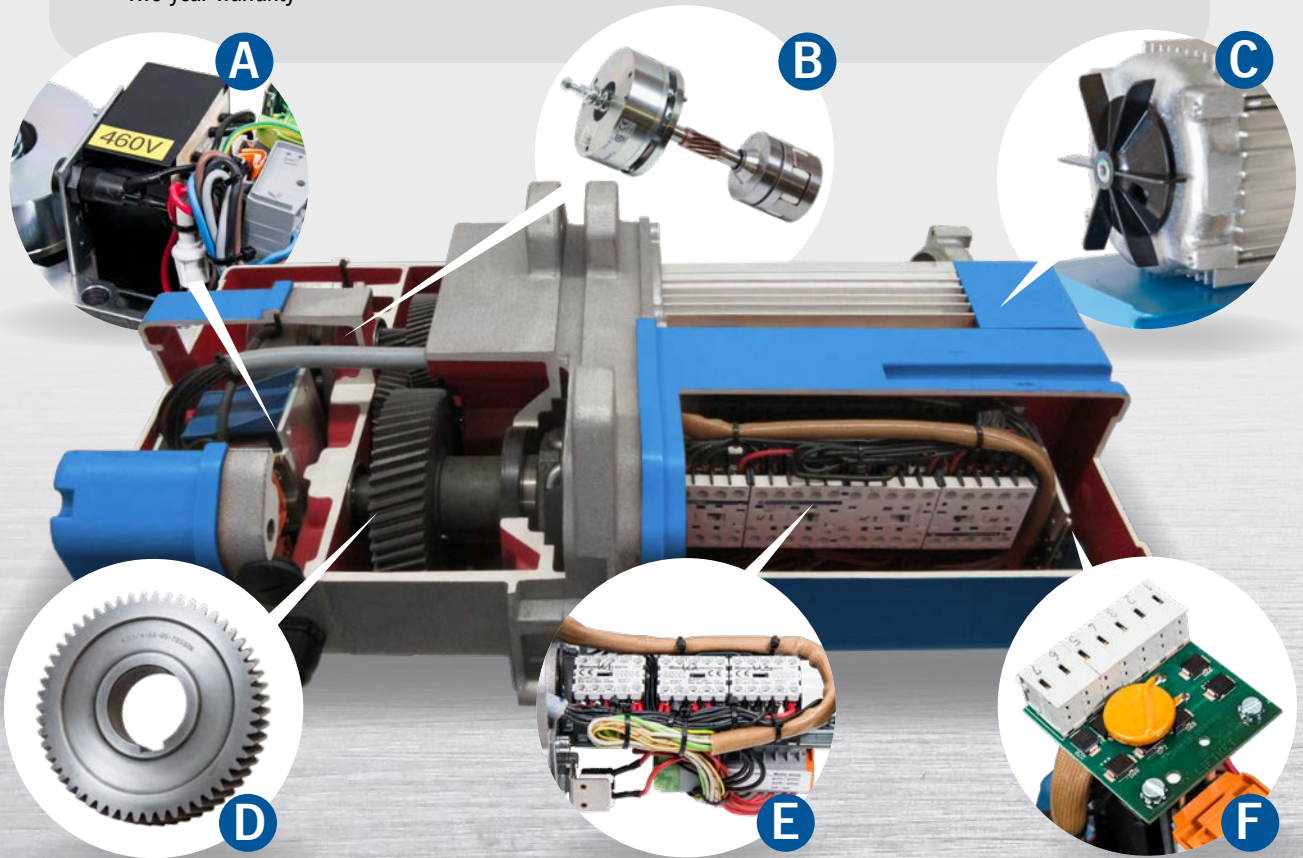
All Hoist are H4 rated, except for 115V single phase hoist, which are H3 rated.



## New Hoists from the Gorbel Name you Trust

Gorbel's GS hoist line offers a wide range of models in different speeds and capacities to best meet your needs. Our rugged construction makes them ideal for both high production environments and those applications requiring only periodic lifting and positioning.

- The compact body design makes it the perfect dimension for any work area and makes it an ideal hoist for low headroom applications. Plus, the smaller size lends itself to easy installation and relocation
- All components from gears to case are fabricated at a single location for superior quality control
- Available in a variety of three phase configurations as well as 115-1-60
- Capacities from 1/8 to 5 tons to meet the needs of users in a wide range of industries
- Can be used with Gorbel Work Station Crane trolleys or equipped with trolleys for S Beams and W Beams
- Direct acting upper and lower limit switches
- Tested in accordance with ASME as well as FEM/ISO
- Ideal for both high production environments and those applications requiring only periodic lifting and positioning
- Two-year warranty



### Gorbel Electric Chain Hoist Features

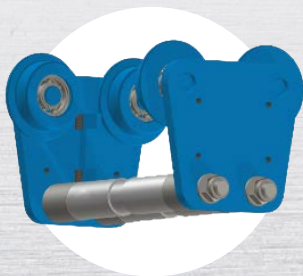
- A** Low voltage, 24V transformer fused for operator protection.
- B** Modular brake and clutch externally mounted for easy service. Standard DC brake for long service life.
- C** Totally enclosed, fan cooled motor.
- D** Cased hardened gears provide quiet, smooth operation, and longevity. All components from gears to case are fabricated at a single location for superior quality control.
- E** Modular control package features standard IEC contactors as well as upper and lower limit switches.
- F** Consistent rectifier throughout the hoist offering and voltage range minimizes spare parts inventory.

## Trolley Options

A variety of manual and motor-driven trolleys are available to match your hoist with the appropriate beam flange.

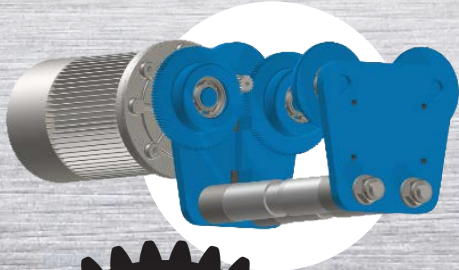
	Part No.	Standard Flange Width		Gorbel P/N	Larger Flange Width, S1		Gorbel P/N	Larger Flange Width, S2		Speed ft/min	Capacity lbs	Compatible Hoist Types
		mm	in		mm	in		mm	in			
Motor-Driven Single Speed 460-3-60	95100	50-106	1.97-4.17	95110	110-200	4.33-7.87	95120	210-300	8.27-11.81	63	1000	020-030
	95101	66-135	2.6-5.31	95111	137-215	5.39-8.46	95121	220-300	8.66-11.81	63	2000	030-071
	95102	66-135	2.6-5.31	95112	137-215	5.39-8.46	95122	220-300	8.66-11.81	63	4000	070/071
	95103	82-155	3.23-6.1	95113	137-215	5.39-8.46	95123	220-300	8.66-11.81	31	4000	090/091
	95104	82-155	3.23-6.1	95114	137-215	5.39-8.46	95124	220-300	8.66-11.81	31	7000	090/091
Motor-Driven Two Speed 460-3-60	95130	50-106	1.97-4.17	95140	110-200	4.33-7.87	95150	210-300	8.27-11.81	19, 78	1000	020-030
	95131	66-135	2.6-5.31	95141	137-215	5.39-8.46	95151	220-300	8.66-11.81	19, 78	2000	030-071
	95132	66-135	2.6-5.31	95142	137-215	5.39-8.46	95152	220-300	8.66-11.81	19, 78	4000	070/071
	95133	82-155	3.23-6.1	95143	137-215	5.39-8.46	95153	220-300	8.66-11.81	19, 78	4000	090/091
	95134	82-155	3.23-6.1	95144	137-215	5.39-8.46	95154	220-300	8.66-11.81	19, 78	7000	090/091
	95135	90-155	3.54-6.1	95145	160-226	6.3-8.9	95155	240-310	9.45-12.2	15, 63	10000	110/111
Manual, Push	95160	50-106	1.97-4.17	95170	110-200	4.33-7.87	95180	210-300	8.27-11.81	N/A	1000	020-030
	95161	66-135	2.6-5.31	95171	137-215	5.39-8.46	95181	220-300	8.66-11.81	N/A	2000	030-071
	95162	66-135	2.6-5.31	95172	137-215	5.39-8.46	95182	220-300	8.66-11.81	N/A	4000	070/071
	95163	82-155	3.23-6.1	95173	137-215	5.39-8.46	95183	220-300	8.66-11.81	N/A	4000	090/091
	95164	82-155	3.23-6.1	95174	137-215	5.39-8.46	95184	220-300	8.66-11.81	N/A	7000	090/091
Manual, Geared	95200	90-155	3.54-6.1	95210	160-226	6.3-8.9	95230	240-310	9.45-12.2	N/A	10000	110/111

All motor-driven hoists shown are 460-3-60.



### Manual Trolley

The most popular trolley style, the manual trolley quickly attaches to the beam of a traditional I or W Beam jib and provides a convenient means of moving the hoist along the beam when performing work activities. Hoist with double hole plate suspension is ideal for use with the manual trolleys as it provides a secure fit between the trolley and the hoist. All trolleys come equipped with two attachment bolts that line-up with the double hole suspension.



### Motor-Driven Trolleys

Motor-driven trolleys are also available and may be part of a complete integration package for the jib crane. Using a similar design of the manual trolley, motor-driven trolleys may be specified for single or dual speeds.



**GORBEL**  
A CLASS ABOVE

© 2017 Gorbel Inc. All Rights Reserved.