

Kattsafe® Height access
and fall protection



NON-PENETRATING WARNING LINE

WL33



PRODUCT OVERVIEW



The Kattsafe WL33 Non-Penetrating Warning Line provides high visual warning of a fall hazard on membrane and built-up roofs. The aluminum posts are positioned every 20 feet (with the exception of corners and terminations) and connected with plastic coated stainless aircraft cable with aluminum danger pennants every 6 feet. Our WL33 Non-Penetrating Warning Line for membrane and built-up roofs, features a plastic coated concrete weighted base that is completely non-penetrating and sits on top of the roofing membrane. WL33 provides OSHA compliance and high visual awareness to ensure people are kept a safe distance from fall hazards.

Applications

- Visual warning line around roof perimeter
- Visual warning line around rooftop equipment, machinery, and other unprotected fall edges

Features

- Can be customized on-site to meet the required application
- Can be combined with Kattsafe guardrail systems to create an OSHA compliant roof
- OSHA compliant
- Posts supplied yellow as standard for increased visibility

TECHNICAL SPECIFICATION

Material

- Membrane protection under the base is provided for added safety.
- Cable: 1/8in galvanized aircraft cable, vinyl-coated with aluminum crimped termination sleeves.
- Flags: Aluminum sheet flags with a 'Warning' stamp, powder-coated in safety yellow for increased visibility.
- Flag Location: Flags are spaced every 6ft, with an aluminum sleeve to maintain evenly spaced intervals.

Finish

All aluminum sections are mill-type, free from sharp edges and snagging points

Compliance

WL33 is compliant with OSHA Code 1926.502(f)(2)(iii), designed to be erected a minimum of 6 feet from the roof edge. It can resist a horizontal force of at least 16lbs without tipping over.

Installation

The product mounts to a weighted base. The warning flags should be spaced every 6ft.

Installation

As per the standard company policy, the WL33 comes with a warranty period of 5 years from the date of installation, subject to proper installation, use, and maintenance as per the manufacturer's specifications. This excludes the weighted bases. Extended warranties could be available on a project basis.

Kattsafe Height access
and fall protection



METAL ROOF MOUNT GUARDRAIL

GR32



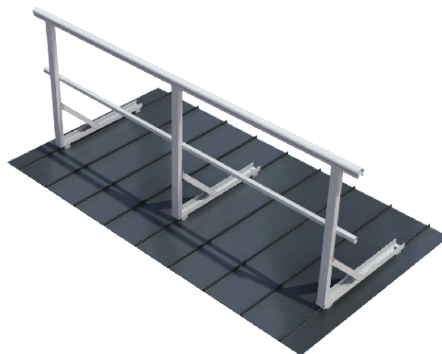
PRODUCT OVERVIEW



GR32 Metal Roof Mount Guardrail is designed for metal roofs including R panel and standing seam systems. The GR32 system can either be fastened down with self-sealing rivets to the metal deck or with non-penetrating clamps to suit the standing seam profile. Roof guardrail systems can be purchased by simply selecting the kit length(s) required, the number of corner kits, wall termination kits and ladder connection hardware kits. GR32 guardrail is simple and quick to install.

Features

- Manufactured of high tensile aluminum
- Modular system facilitates infinite configurations
- Can be easily customized on site to suit application
- OSHA compliant



TECHNICAL SPECIFICATION



Material and dimensions

- Top rail: 2in aluminum profiled tube - 6005-T5. 0.75lbs/ft
- Mid rail: 1-5/8in aluminum profiled tube - 6005-T5. 0.40lbs/ft
- Splice joints: profiled aluminum tube
- Post: 2-1/4 x 1-1/2 x 1/8in Aluminum Rectangular Tube 6005-T5 - 40in; 2-1/2 x 1-1/2 x 1/8in Aluminum Channel 6005-T5 - 31.5in; 2-1/2 x 1-1/2 x 1/8in Aluminum Channel 6005-T5 - 18in
- Post mounting: standing seam clamps or rivets
- Tobe board: 4-1/4 x 1 x 3/32in Aluminum Channel - 6005-T5. 0.70lbs/ft
- Hardware: all stainless steel
- Corner elbows: die cast aluminum. Top rail corner - 0.8lbs. Mid rail corner - 0.42lbs
- End caps: plastic caps

Finish

All aluminum sections are supplied mill finish as standard. Safety Yellow option in stock. Custom colors are available

Layout and installation

- Railing height to be 42in (-/+ 3in per OSHA) when installed correctly. Distance between top rail and mid rail cannot exceed 19in
- Post spacing is a maximum of 8ft
- GR32 guardrail posts are secured to the roof substrate with standing seam clamps or rivets. Project-specific data is required to determine the correct type of fastener and number needed to secure each post. An ANSI/SPRI FX-1 Pull Test is recommended to measure the pull-out resistance of fasteners included in the load path

Compliance

The GR32 modular guardrail system is designed and manufactured to meet and exceed OSHA and ANSI regulations as applicable.

Product warranty

5 years from date of installation, subject to correct installation, use, and maintenance in accordance with manufacturer's specifications and recommendations. Extended warranty is available on a per project basis.

Kattsafe[®] Height access
and fall protection

NON-PENETRATING GUARDRAIL

GR34



PRODUCT OVERVIEW



The GR34 Non-Penetrating Guardrail system provides the highest level of passive safety for membrane and built up roof systems. The GR34 guardrail features a plastic coated, steel weighted base that sits up top of the roofing membrane resulting in a completely freestanding system that is OSHA compliant. GR34 bases and posts are positioned a maximum 10ft on center. This system is sold in kit form to ensure all components are included for seamless installation. Roof guardrail systems can be purchased by simply selecting the kit length(s) required, the number of corner kits, return kits, wall termination kits and ladder connection hardware kits. GR34 guardrail is simple and quick to install. The system can be easily customized on-site to suit specific site requirements.

Features

- Manufactured of high tensile aluminum
- Modular system facilitates infinite configurations
- Can be easily customized on site to suit application
- OSHA compliant



TECHNICAL SPECIFICATION



Material and dimensions

- Top rail: 2in extruded 6005-T5 aluminum profiled tube. 0.75lbs/ft
- Mid rail: 1-5/8in extruded 6005-T5 aluminum profiled tube. 0.40lbs/ft
- Splice joins: profiled aluminum tube
- Post: 2-1/4 x 1-1/2 x 1/8in extruded 6005-T5 rectangular tube. 2.70lbs
- Toe board: 4-1/4 x 1 x 3/32in extruded 6005-T5 aluminum channel. 0.70lbs/ft
- Hardware: all stainless steel
- Corner elbows: die cast aluminum. Top rail corner - 0.8lbs. Mid rail corner - 0.42lbs
- End caps: plastic caps
- Roof protective pads: 24 x 24 x 5/32in recycled rubber

Finish

All aluminum sections are supplied mill finish as standard. Safety Yellow option in stock. Custom colors are available

Layout and installation

- Railing height to be 42in when installed correctly. Distance between top rail and mid rail cannot exceed 19in
- Post spacing is a maximum of 10ft. Please note that in certain states, the maximum is 8ft
- A 90 degree return kit is required at the start and stop of any GR34 free-standing guardrail system regardless of length. This is typically 5ft in length. This geometry ensures the system meets the loads required per OSHA.
- The GR.PAD.EPDM Roof Protective pad is required under every base where there is no parapet or small wall.
- Bases should be positioned a minimum of 2ft from the roof edge where there is no parapet or small wall.

Compliance

The GR34 modular guardrail system is designed and manufactured to meet and exceed OSHA and ANSI regulations as applicable.

Product warranty

5 years from date of installation, subject to correct installation use and maintenance in accordance with manufacturer's specifications and recommendations with the exception of the weighted bases which have a warranty of 2 years. Extended warranty is available on a per project basis.

NON-PENETRATING WARNING LINE

WL32



PRODUCT OVERVIEW



The WL32 Non-Penetrating Warning Line provides high visual warning of a fall hazard on membrane and built-up roofs. The aluminum posts are positioned every 25 to 30ft and connected with plastic coated galvanized aircraft cable with aluminum danger pennants every 6ft. Our WL32 Non-penetrating Warning Line for membrane and built-up roofs, features a plastic coated steel weighted base that is completely non-penetrating and sits on top of the roofing membrane. Kattsafe WL32 provides OSHA compliance and high visual awareness to ensure people are kept a safe distance from fall hazards

Applications

- Visual warning line around roof perimeter
- Visual warning line around rooftop equipment, machinery, and other unprotected fall edges

Features

- Can be customized on-site to meet the required application
- Can be combined with Kattsafe guardrail systems to create an OSHA compliant roof
- OSHA compliant
- Posts supplied yellow as standard for increased visibility

TECHNICAL SPECIFICATION

Material

- Mounting Posts: 2-1/4 x 1-1/2 x 1/8in high tensile aluminum rectangular hollow sections, mill finish, and free from sharp edges and snag points. Post height: 39in. These posts mount to the weighted base using stainless steel hardware.
- Weighted Bases: 5/8 x 23 x 23in hot rolled galvanized steel bases.
- Pre-tapped holes for post mounting.
- Membrane protection under the base is provided for added safety.
- Cable: 1/8in galvanized aircraft cable, vinyl-coated with aluminum crimped termination sleeves.
- Flags: Aluminum sheet flags with a 'Warning' stamp, powder-coated in safety yellow for increased visibility.
- Flag Location: Flags are spaced every 6ft, with an aluminum sleeve to maintain evenly spaced intervals.

Finish

All aluminum sections are mill-type, free from sharp edges and snagging points

Compliance

WL32 is compliant with OSHA Code 1926.502(f)(2)(iii), designed to be erected a minimum of 6 feet from the roof edge. It can resist a horizontal force of at least 16lbs without tipping over.

Installation

The product mounts to a weighted base using stainless steel hardware. The warning flags should be spaced every 6ft.

Product Warranty

As per the standard company policy, the WL32 comes with a warranty period of 5 years from the date of installation, subject to proper installation, use, and maintenance as per the manufacturer's specifications.

Kattsafe® Height access
and fall protection



WARNING LINE FOR METAL ROOFS

WL31



PRODUCT OVERVIEW



The WL31 roof safety line is our warning line system for metal roofs. This product has two mounting types available — self-sealing rivets or non-penetrating seam clamps. Both mounting types offer the same OSHA compliance and high visual awareness to ensure people are kept at a safe distance from fall hazards.

For metal decks and standing seam roofs, we offer an aluminum base that spans multiple roof profiles and can be fastened down every 15-30 feet. These poles are connected with plastic-coated stainless steel cables. Aluminum danger pennants are attached to this cable every 6 feet to make the cable more visible.

Features

- Can be customized on-site to meet the required application
- Can be combined with Kattsafe guardrail systems to create an OSHA compliant roof
- OSHA compliant
- Posts supplied yellow as standard for increased visibility

Applications

- Visual warning line around roof perimeter
- Visual warning line around rooftop equipment, machinery, and other unprotected fall edges

TECHNICAL SPECIFICATION

Material

- Mounting Posts: High tensile 2-1/4 x 1-1/2 x 1/8in aluminum rectangular hollow sections. These are mill finish, free from sharp edges and snag points, and mount to the metal roof with stainless steel hardware. Post Height: 39in
- Metal Roof Bases: Aluminum (5000 series) measuring 5/8 x 26 x 16-1/4in, with pre-drilled holes for post mounting.
- Cable: Comes with a 1/8in galvanized aircraft cable, which is vinyl-coated with aluminum crimped termination sleeves.
- Flags: The product includes 'Warning' stamped flags made from aluminum sheet. These flags are powder-coated in safety yellow, located every 6 feet with an aluminum sleeve for spacing maintenance.
- Connecting Hardware: Hardware made from 304 stainless steel compliant with ASTM F593-13a and ASTM F606/F606M-14a. The kit includes fasteners, anchors, 305 stainless steel rivets, and aluminum rivets with a 5/16in diameter. A non-penetrating clamp in aluminum is also part of the accessories.

Finish

All aluminum sections are mill-type, free from sharp edges and snagging points.

Compliance

WL31 is compliant with OSHA Code 1926.502(f)(2)(iii), designed to be erected a minimum of 6 feet from the roof edge. It can resist a horizontal force of at least 16lbs without tipping over.

Installation

The product mounts to a metal roof mounting base using stainless steel hardware. The warning flags should be spaced every 6ft.

Product Warranty

As per the standard company policy, the WL31 comes with a warranty period of 5 years from the date of installation, subject to proper installation, use, and maintenance as per the manufacturer's specifications. This excludes the weighted bases which come with a 2-year warranty. Extended warranties could be available on a project basis.

Kattsafe[®] Height access
and fall protection



SURFACE MOUNT GUARDRAIL

GR36



PRODUCT OVERVIEW



The GR36 Surface Mount Guardrail is designed for sloped roof projects and application where higher wind loads, ice build-up, and snow loads are typical. The GR36 system can be fastened down with the Kattsafe Anchor System. The Anchor is supplied with project specific roof membrane pre-attached to ensure a waterproof connection and maintain the warranty. The Anchor is approved by all major manufacturers. This system can be easily customized on-site to suite specific site requirements.

Features

- Manufactured of high tensile aluminum
- Modular system facilitates infinite configurations
- Can be easily customized on site to suit application
- Lightweight for easy handling

IMPORTANT NOTE:

The surface attachment method (formerly referred to as KATTPOINTS) will require a certified installer for the final waterproofing (heat welding/ adhering of roof membrane).

TECHNICAL SPECIFICATION

Stocked colors

Mill finish, safety yellow

Custom colors

Inquire about custom colors

OSHA compliance

OSHA 1926.501(b), 1910.28(b)

Max. spacing between posts

10ft

Kattsafe Height access
and fall protection



INTERNAL WALL MOUNT GUARDRAIL

GR31



PRODUCT OVERVIEW



The GR31 Internal Wall Mount Guardrail provides the highest level of passive safety for internal wall mounted applications. GR31 posts are positioned a maximum of 8ft on center. This system is sold in kit form to ensure all components are included for a seamless installation. Roof guardrail systems can be purchased by simply selecting the kit length(s) required, the number of corner kits, wall termination kits and ladder connection hardware kits. GR31 guardrail is simple and quick to install. This system can be easily customized on-site to suit specific site requirements.

Features

- Manufactured of high tensile aluminum
- Modular system facilitates infinite configurations
- Can be easily customized on site to suit application
- Lightweight for easy handling

TECHNICAL SPECIFICATION

Stocked colors

Mill finish, safety yellow

Custom colors

Inquire about custom colors

OSHA compliance

OSHA 1926.501(b), 1910.28(b)

Max. spacing between posts

8ft

Kattsafe Height access
and fall protection

ROOF HATCH GUARDRAIL

KG



PRODUCT OVERVIEW



The Kattsafe Roof Hatch Guardrail system meets all OSHA requirements for safe entry through rooftop openings. This fixed railing system provides permanent fall protection for hatch openings. Available in multiple sizes, the roof hatch guardrail can fit most existing hatches or can be easily installed on our Kattsafe roof hatch. The innovative clamping system eliminates the need to drill holes into the hatch or roof surface, jeopardizing the roof warranty. This system installs in minutes with basic tools.

Features

- Permanent fall protection system goes up in minutes
- Meets OSHA requirements for rooftop openings
- Can attach to any size roof hatch
- No roof penetration - protects roof warranty
- 5-year warranty (moving parts not included)

TECHNICAL SPECIFICATION

Sizes

Standard roof hatch sizes available in stock. Can be custom made to fit irregular roof hatch sizes

Color

Safety Yellow Standard. Powder coating available

OSHA compliance

OSHA 1910.28(b)(3)(i), 1910.28(b)(3)(iv)

Warranty

5 years (does not include moving parts)

Kattsafe[®] Height access
and fall protection

FLEXIBLE WALKWAY

PVC



PRODUCT OVERVIEW



Kattsafe Flexible Walkway PVC is a two-layer roof walkway matting for safety and comfort underfoot. A highly specialized walkway matting for flat roofs, gantries and high level walkways, PVC is certified slip resistant and able to withstand all types of weather. Made from flexible PVC, it's designed to be loose laid with no fixing required, so can be installed quickly and easily, even in adverse weather conditions. The durable, two-layer construction contours to the roof structure and protects the membrane, while the diamond-cut pattern and cross-directional top ribs ensure a firm underfoot grip. It remains stable in winds up to 60mph/hr (96km).

Features

- Diamond-cut pattern
- Two-layer construction
- Flexible, one-piece construction
- Loose lay, no fixing required
- Supplied in 33' (10m) rolls

Colors

-  Light Gray
-  Black
-  White
-  Yellow

More colors available upon request

TECHNICAL SPECIFICATION

Standard sizes

- Height: 9/16in (14mm)
- Standard roll options: 33ft x 2ft (10 x 0.6m) | 33ft x 3ft 6in (10 x 0.91m) | 33ft x 4ft (10 x 1.22m)
- Weight: 1.3lbs/sq. ft (6.6kg/m²)

Tolerances

- Height (+/- 0.05in): 9/16in (14mm)
- Length (0+1 ft): 33ft
- Width (+/- 1/2in): 2ft 3ft 4ft

Technical information

- Acoustic: Excellent sound absorption
- Composition: Resistant to most acids, alkalines and oils. You can read more about specific chemical resistances by downloading this information sheet
- Drainage: DIN 51130: V10
- Environment: PVC is 100% recyclable. When manufactured in black, it's made using our post industrial recycled material. The recycled content averages at least 30%, but we strive for 100% wherever possible. We don't use any substances included in the SVHC list under REACH in any of our matting products.
- Flammability: UL 94 HB Self Extinguished (material ignited but stopped burning prior to reaching the timing zone) / No Burn Rate. UL 214 did not ignite
- Hygiene: Made from non-porous PVC that's naturally resistant to bacteria growth
- Reversion: Thermoplastic shrinkage can result in size reductions up to 2%. This may be accelerated in hot environments. You can read more about the causes of shrinkage by downloading this information sheet
- Slip resistance: ASTM F 1677 - Dry/Wet: 1.0/0.9 | DIN 51130: R10
- Thermal: Designed to function at temperatures from -9°F and up to +140°F. Slight size variation may occur at temperature extremes.
- UV light: Resistant to PVC degradation
- Wind resistance: PVC remains stable in winds up to 60mph (96km/h). Tests at PRI Construction Materials Technologies LLC in Florida showed PVC when laid flat on a stable platform remained in position for wind speeds of 125mph (200 km/h).
- Warranty: Five years. Visit our policies page for more information about warranties

TECHNICAL SPECIFICATION CONTINUED

Benefits

- Certified slip resistance (DIN) 51130: R10; ASTM 1677: 1.0/0.9)
- Excellent drainage (DIN 51130: V10)
- Contours to roof structure and protects the membrane
- Stable in winds up to 60mph/hr (96km)
- Quick to install

Installation

- Installation is simple
- Loose lay, no fixing required
- Durable, one-piece construction
- Supplied in 33' rolls; simply cut to fit on site
- Contours to the roof structure

Cleaning

- Simply lift or roll to clean
- Easy to clean with a high pressure hose

Kattsafe Height access
and fall protection

FLEXIBLE WALKWAY

TPO



PRODUCT OVERVIEW



Kattsafe Flexible Walkway TPO is a highly specialized walkway matting compatible with TPO and EPDM roof membranes. TPO has been specifically created to protect flat roofs from heavy foot traffic, dropped tools and maintenance equipment.

Made from flexible TPO, it's designed to be loose laid with no fixing required, so can be installed quickly and easily, even in adverse weather conditions. The durable, welded construction contours to the roof structure, effectively protecting the membrane from any potential damage. The embossed surface ensures a firm underfoot grip, providing safe access for staff and maintenance workers. It remains stable in winds up to 55mph/h (89km).

Features

- Embossed surface
- Two-layer construction
- Durable, welded construction
- Loose lay, no fixing required
- Made from flexible TPO

Colors

-  Light Gray
-  White
-  Yellow

More colors available upon request

TECHNICAL SPECIFICATION

Standard sizes

- Height: 1/2in (12mm)
- Standard roll options: 33ft x 2ft (10 x 0.6m) | 33ft x 2ft 6in (10 x 0.75m) | 33ft x 3ft (10 x 0.9m)
- Weight: 1.1lbs/sq. ft (5.2kg/m²)

Tolerances

- Height (+/- 0.05in): 1/2in (12mm)
- Length (0+1 ft): 33ft
- Width (+/- 1/2in): 2ft 2ft6in 4ft

Technical information

- Acoustic: Excellent sound absorption
- Composition: Thermoplastic polyolefin
- Drainage: DIN 51130: V10
- Environment: Flexible Walkway TPO is 100% recyclable. We don't use any substances included in the SVHC list under REACH in any of our matting products.
- Flammability: UL 94 HB Self Extinguished (material ignited but stopped burning prior to reaching the timing zone) / No Burn Rate. UL 214 did not ignite
- Slip resistance: DIN 51130: R9 | ASTM 1677: 1.1/0.9
- Wind resistance: When loose laid, Flexible Walkway TPO can withstand winds up to 55mph (89 km/h). In laboratory conditions, on a flat stable platform at The University Of Hertfordshire, School of Aerospace, Automotive & Design Engineering, TPO remained stable in wind speeds up to 88mph (142 km/h).
- Warranty: Four years. Visit our policies page for more information about warranties

Benefits

- Certified slip resistance (DIN) 51130: R10; ASTM 1677: 1.0/0.9)
- Excellent drainage (DIN 51130: V10)
- Contours to roof structure and protects the membrane
- Stable in winds up to 60mph/hr (96km)
- Quick to install

Installation

- Installation is simple
- Loose lay, no fixing required
- Durable, one-piece construction
- Supplied in 33' rolls; simply cut to fit on site
- Contours to the roof structure

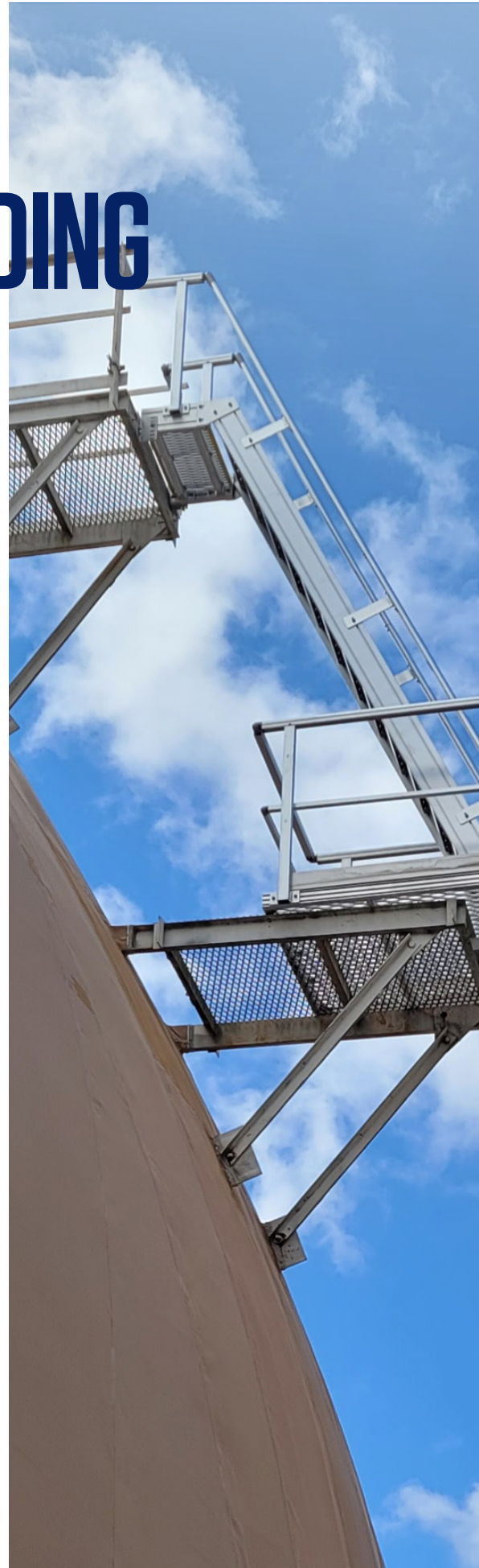
Cleaning

- Simply lift or roll to clean
- Easy to clean with a high pressure hose

HEIGHT ACCESS & FALL PROTECTION



WE ARE WORLD-LEADING HEIGHT ACCESS AND FALL PROTECTION MANUFACTURERS



Simpler systems are safer systems. That's why we design and manufacture industry-leading, high-spec products for height safety and access systems that deliver maximum safety with minimum fuss. But 'good' is never enough for us and we continue to push the standards of safety forward with each innovation we develop.

From designing the highest quality products and systems in the industry to providing all the specifications and details you need for safe installation and use, we're obsessed with making your fall protection and height access systems as simple, and as safe, as possible. Because when it comes to protecting lives, there are no shortcuts.





GO WHERE YOU NEED TO, SAFELY WITH KATTSAFE

Designed by industry-leading experts and manufactured using advanced fabrication techniques at our facilities in the USA and Australia, every Kattsafe component, product, and system is designed to the highest specification for complete confidence that your people's lives will be protected.

Our high-spec components and products integrate seamlessly for modular systems that offer endless opportunities to create the safest solution possible.

By using innovative components across multiple products and systems, we can customize our safety systems to suit any building or business around the world.



OUR PRODUCTS

ACCESS. PROTECT. CONNECT.



Go where you need to, safely with the most advanced height access and safety systems from Kattsafe.

Designed by industry-leading experts and manufactured using advanced fabrication techniques at our facilities in the USA and Australia, every Kattsafe component, product, and system is designed to the highest specification for complete confidence that your people's lives will be protected.

Access

- Fixed ladder systems
- Fold down ladders
- Roof hatches
- Ship ladders
- Stair & platform systems
- Rooftop crossovers
- Modular ramp systems

Protect

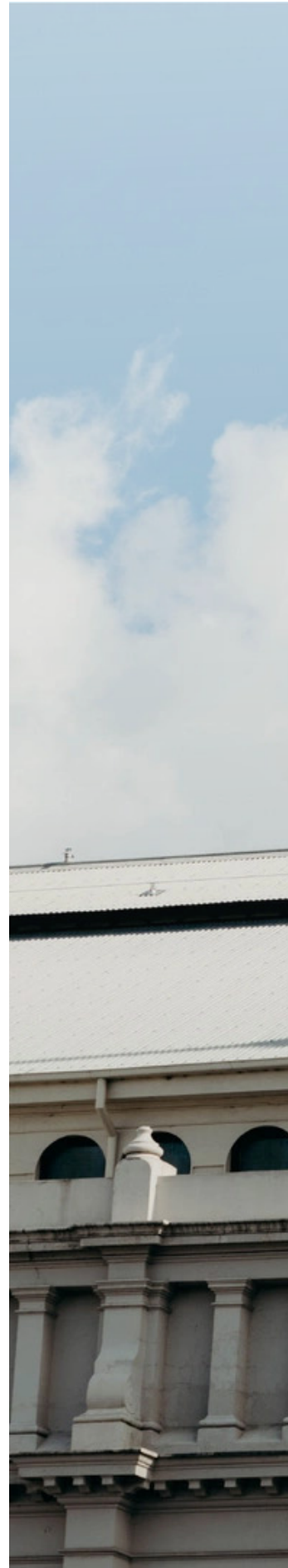
- Guardrails
- Walkways
- Skylight protection

Connect

- Lifelines
- Anchor points

Accessories

- Signage, fixings and hardware



LADDER FALL ARREST

Ladder fall arrest system

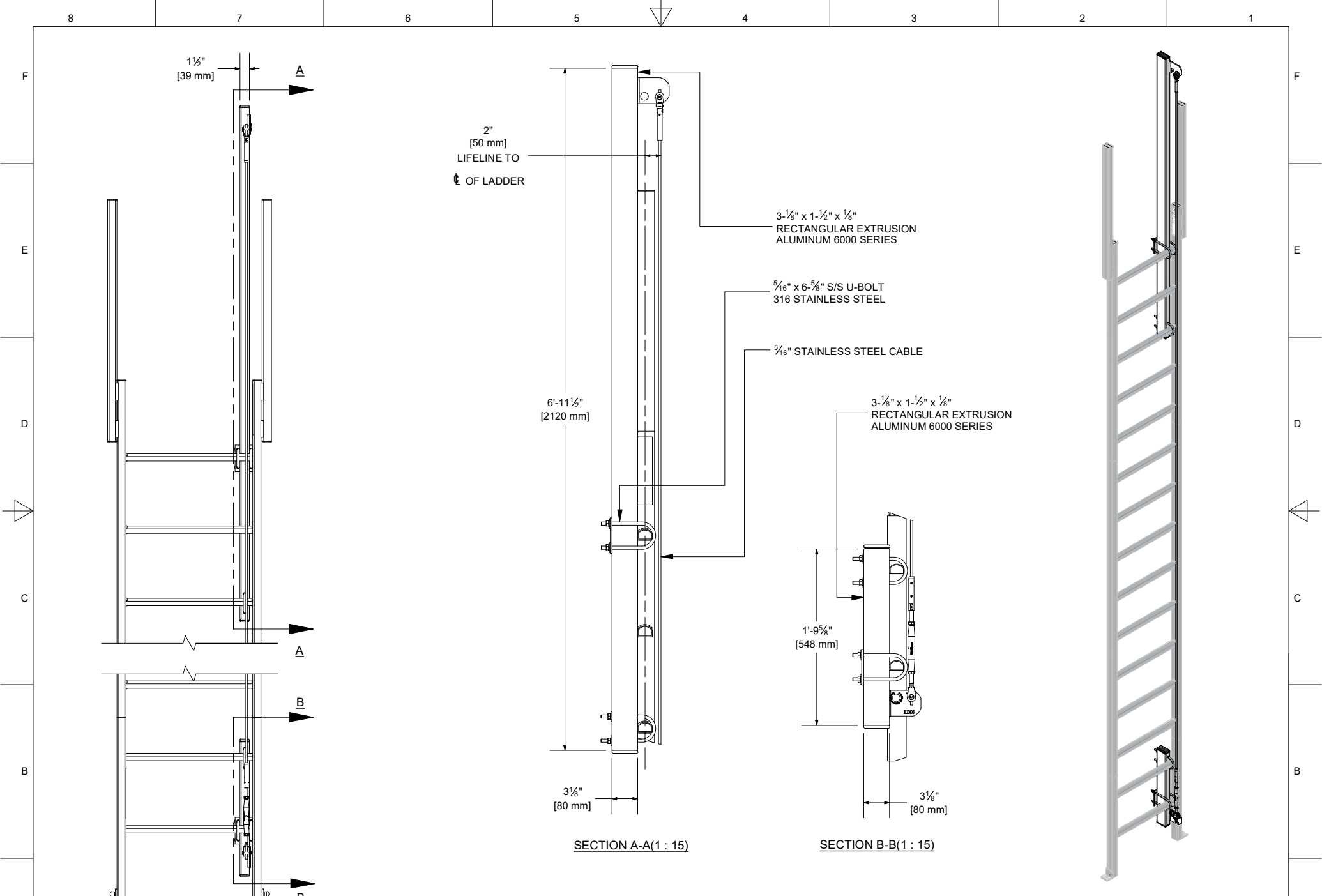
Ladder fall arrest solution that integrates with the Kattsafe ladders and can also be retrofitted to existing OSHA compliant fixed ladders.



Ladder fall arrest traveler device

A minimum fuss traveler device that is exclusively used with the Kattsafe ladder fall arrest system.





		DESCRIPTION		PRODUCT CODE		1 : 30		PAGE 1 OF 1	
		VERTICAL LIFELINE RETROFIT KIT		VL1		ALD		DATE: 03/12/24	
3921 PERRY BLVD WHITESTOWN, IN 46075 TEL: 888 637 7872 SALES@KATTSAFE.COM		MATERIAL		FINISH		DWG No.		REV.	
THIS DRAWING REMAINS THE PROPERTY OF KATTSAFE® AND MAY NOT BE CHANGED WITHOUT WRITTEN PERMISSION		ALUMINUM		MILL		VL1.TD			

REV	DATE	BY	COMMENTS
8			
7			
6			

Kattsafe Height access
and fall protection



ROOF ACCESS HATCH

KH



PRODUCT OVERVIEW



The Kattsafe Roof Access Hatch provides convenient, cost efficient rooftop access, allowing for ladder and stair access to the roof from the interior of the building. The Kattsafe Roof Access Hatch is designed and engineered for use over roof openings and is secured from the base flange to the roof for superior durability, safety and ease of installation.

Codes and Descriptions

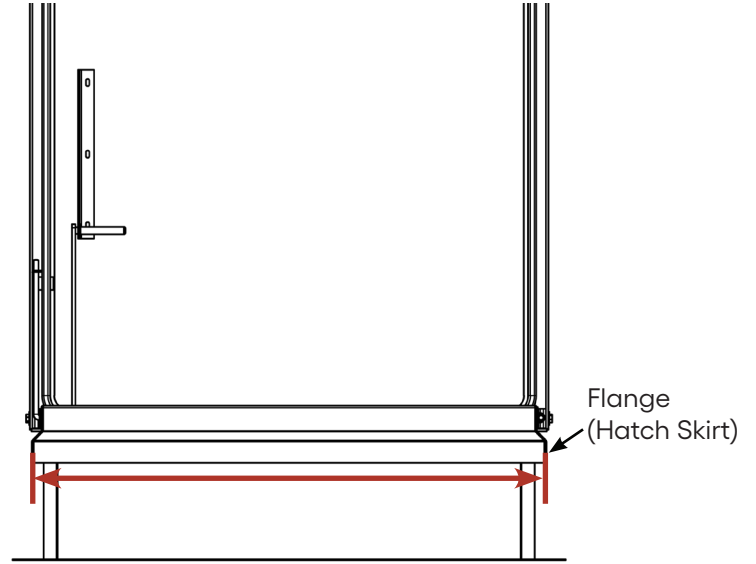
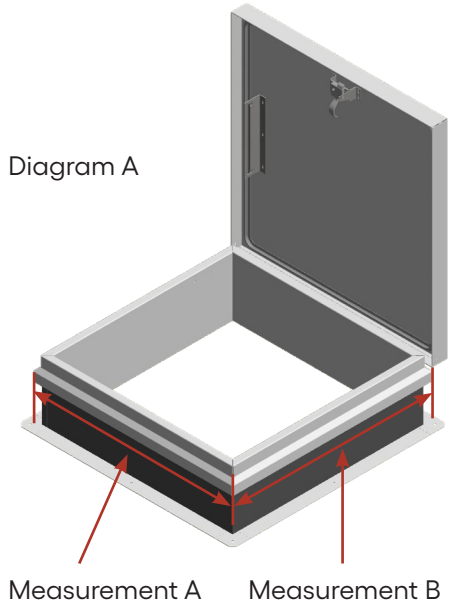
- **KH3036:** Galvanized Roof Hatch - 30in x 36in
- **KH3636:** Galvanized Roof Hatch - 36in x 36in
- **KH3054:** Galvanized Roof Hatch - 30in x 54in
- **KH3096:** Galvanized Roof Hatch - 30in x 66in

Features

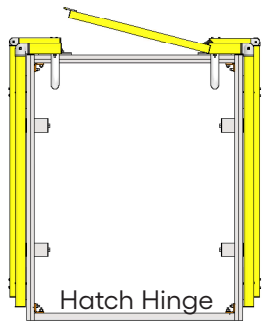
- Durable construction - made to outlast your roof
- Galvanized 14 gauge steel cover and curb
- Full insulated cover and curb
- Locking feature for added security
- Full 90 degree opening
- High load capacity up to 70psf
- Heavy duty torsion coil spring for easy open/close
- Pre-drilled holes for simple install of the Roof Hatch Guardrail
- 5-year warranty

ROOF HATCH ASSESSMENT FORM

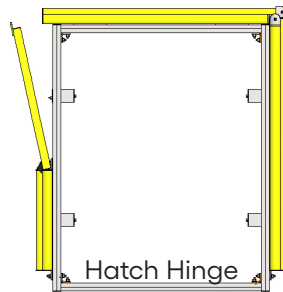
1. Measure the roof hatch flange length for measurement 'A'.
2. Measure the roof hatch flange length for measurement 'B'.
3. Circle your exit type.
4. Submit a photo of your application with this form to sales@kattsafe.com for an accurate quote.
5. If you are unable to accurately complete this form due to a unique application, then please contact Kattsafe for further assistance.



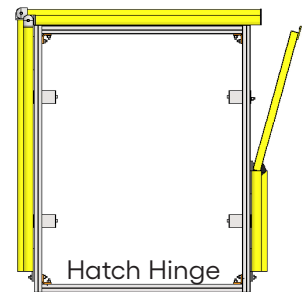
Measurements in Diagram (A) are referencing the length of the flange.



A: Front Exit



B: Left Exit



C: Right Exit

Contact Name	
Contact Info (Phone/Email)	
Project Reference	
Measurement A	
Measurement B	
Exit Option	

ROOF HATCH HOIST

KH0001



PRODUCT OVERVIEW



The Kattsafe Roof Hatch Hoist System provides a safe, easy method to lift items up to the rooftop. This system simply, quickly and securely connects to the Kattsafe Roof Hatch Guardrail system allowing the contractor or maintenance technician to safely lift items such as small tools, compressors and other equipment to the roof through the hatch. Aluminum construction and powder coated finish allows for installation by one person and results in long term, low maintenance performance. Critical hardware components are manufactured of stainless steel to ensure protection against the elements. For aesthetic purposes, the top section of the can be easily dismantled when not in use.

An electric hoist option is available to allow for simple, quick lifting of product when access is more frequent. A cargo net is also available to lift small tools.

Lifting Capacity - 100lbs

Codes and Descriptions

- KH001: Roof hatch mounted hoist system - 100lbs capacity
- KH.CNET: 3ft x 3ft cargo net

w.w.Cannon, Inc.

Design. Layout. Build. Install.

1-800-442-3061
www.wwcannon.com