



Flip-Up Step Dock Accessories



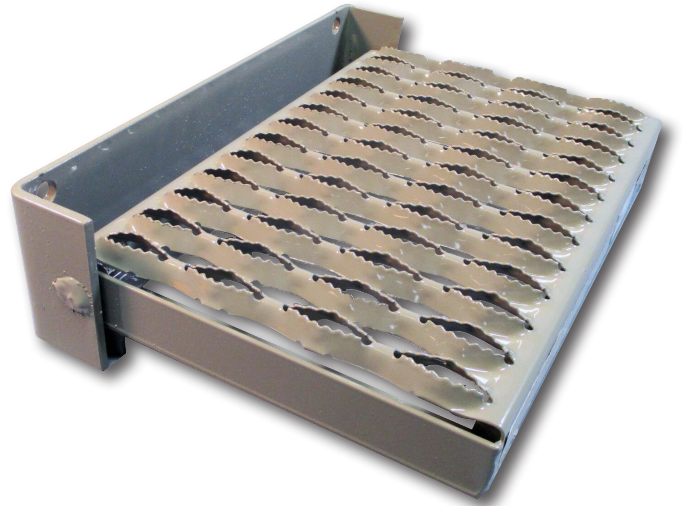
FEATURES

- Constructed of high-strength steel
- Designed to safely support up to 350 lbs
- Step will safely store in an upright position so it stays out of your way
- Easily accommodates larger feet
- Serrated top grating for maximum slip-resistance
- Two 9/16" pre-drilled installation holes
- Sized at 15" L x 10³/₄" W x 4" H
- Design and manufactured in the USA

Flip-Up Step Dock Accessories



Flip Up Step in the stored position



Flip Up Step in the deployed position is
15"L x 10³/₄"W x 4" H

The Allied Solutions flip up step can be mounted just about anywhere in your facility. Eliminate the need for a ladder by adding the flip up step to access valves, machines, or loading docks. Constructed of sturdy steel and powder coated gray, the step easily accommodates large feet to help prevent falls.

