

## WHEEL RESTRAINING UNIT



- ▶ Help prevent a truck trailer from rolling
- ▶ Available in laminated rubber, molded rubber or molded urethane
- ▶ Lightweight and durable
- ▶ Available with a chain and optional cradle
- ▶ Resistant to extreme weather conditions
- ▶ Easy to use
- ▶ Meets OSHA standards
- ▶ Use in conjunction with RIG-based vehicle restraints

# WHEEL CHOCK

## WHEEL RESTRAINING UNIT

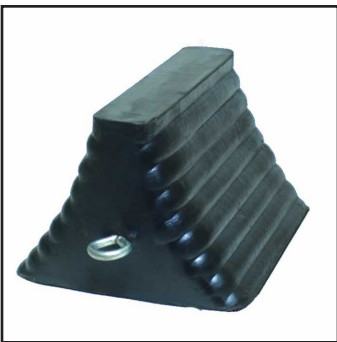


Model 88-8

### Model 88-8

- Extra heavy-duty
- Laminated rubber pads assembled on 3/4" (19.1mm) bolts and compressed between 1/4" (6.35mm) steel plates
- Contoured to fit tire
- Fully meets OSHA requirements
- Completely reversible
- Constructed of fabric reinforced rubber pads cut from recycled truck tires
- Available with chain
- Weight: 15lbs (6.80kg) each

\* **NOTE:** also available with gripper cleats for better traction in snow, ice, dirt and mud



Model 68-9

### Model 68-9

- Molded from a tough fabric reinforced rubber compound
- Well suited for trailer truck and other heavy equipment
- Economical and long lasting
- Easy on macadam surfaces
- Available with chain
- Weight: 10lbs (4.54kg) each



Model 811-7

### Model 811-7

- Light weight yet heavy-duty
- Molded urethane chock contoured to fit truck tires
- Designed to grip both the tire and the pavement
- Will not harm macadam
- Weight: 6.5lbs (2.95kg) each

Model	A width	B height	C length	weight	color
88-8	8" (203.2mm)	8" (203.2mm)	8" (203.2mm)	15lbs (6.80kg)	black
68-9	8" (203.2mm)	5 <sup>3</sup> / <sub>4</sub> " (146mm)	9" (228.6mm)	9lbs (4.8kg)	black
811-7	11 <sup>3</sup> / <sub>8</sub> " (295.3mm)	8 <sup>1</sup> / <sub>4</sub> " (209.6mm)	7 <sup>5</sup> / <sub>8</sub> " (193.7mm)	6.5lbs (2.95kg)	orange

**W.W. Cannon, Inc.**

Design. Layout. Build. Install.

1-800-442-3061  
www.wwcannon.com