



## Connecting Your Loading Docks Online to myQ Dock Management

### IMPROVE EFFICIENCY

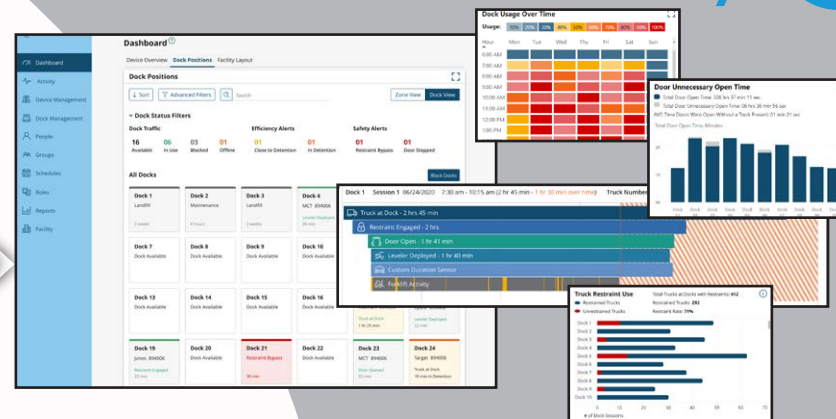
- ▶ Analyze and improve loading operations
- ▶ Review forklift activity in/out of a trailer
- ▶ Receive alerts of inefficient loading sessions or trucks approaching required load times
- ▶ Compare activity with time stamps at your loading docks on any date
- ▶ Monitor the real-time status of each dock

### REDUCE EXPENSES

- ▶ Evaluate and manage truck detention time
- ▶ Monitor and correct unnecessary dwell time
- ▶ Compare any detention fees by carrier, dock, or date
- ▶ Get notified of trucks past required load times
- ▶ Assign trucks to docks for more accurate turn times

### SIMPLIFY MAINTENANCE & PRIORITIZE SAFETY

- ▶ Analyze any off balance usage to ensure all levelers and restraints are being utilized evenly
- ▶ Find the least busy hours to schedule maintenance
- ▶ Receive alerts of any low hydraulic fluid levels
- ▶ Monitor activity at unrestrained trailers
- ▶ Receive open-door alerts



## ANALYZE YOUR LOADING DOCK ACTIVITY ONLINE

Login to your online account at [myQ.com](http://myQ.com) to review and analyze visual reports generated from your iDock Link and sensors. Enhance your loading efficiency and improve turn times.

### ONLINE REPORTS INCLUDE:

- **REAL-TIME ACTIVITY** Check the current status of each dock and time stamps of live truck-at-dock sessions.
- **LOADING DOCK ANALYTICS** Compare the efficiency and activity of any docks during a selected period of time.

## GATHER DATA AT YOUR LOADING DOCKS

**iDOCK LINK** Mounted at any loading dock, iDock Link utilizes a series of sensors installed throughout the dock to gather loading data and send it to the cloud for online analytics in myQ Dock Management, helping to improve your operational efficiency.

### SENSORS INCLUDE:

- **TRUCK PRESENT** Track the full turn time of a trailer at the dock and any stagnant dwell time before or after loading.
- **LEVELER STORED** Review the amount of time a dock leveler is deployed to determine how long loading actually took.
- **RESTRAINT ENGAGED** Monitor the vehicle restraint usage at your docks and ensure trailers are safely secured to the dock during loading.
- **DOOR OPEN** For safety, security, and energy consumption, become alerted if a dock door is left open without a trailer present.
- **FORKLIFT ACTIVITY** Analyze loading activity to ensure personnel are efficient and trucks aren't sitting idle for too long without any activity.
- **HYDRAULIC FLUID LEVEL** Keep your hydraulic dock levelers running smooth by maintaining sufficient fluid levels.

**EXISTING DOCK EQUIPMENT** There is no need to replace all of your existing loading dock equipment to connect online. iDock Link can be added to most loading docks to offer the benefits of myQ Dock Management.

# Connecting your existing loading docks to the Future

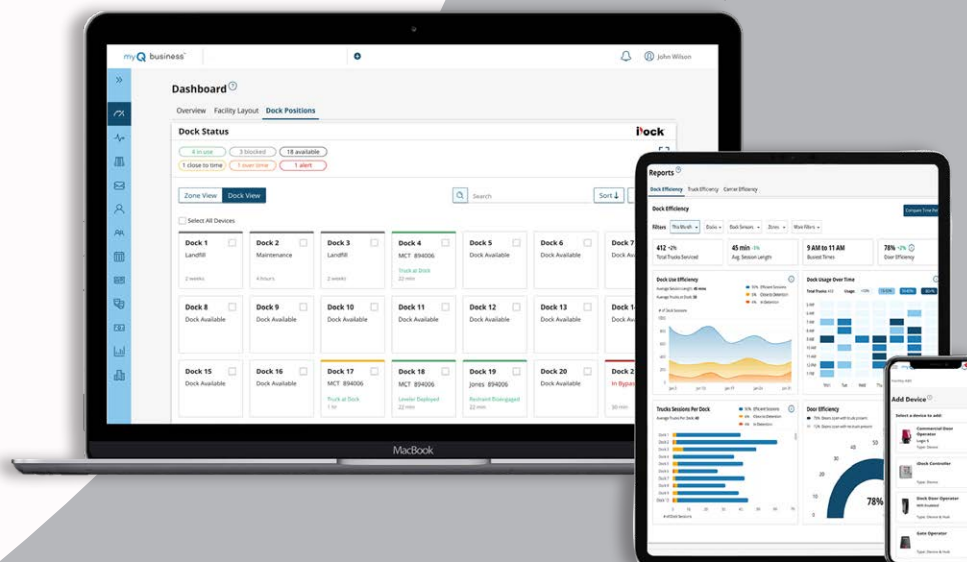
### FACILITY OVERVIEW

Each location can be setup with a clear view of the status of all loading docks, including active loading, available docks, and alerts.



### DEVICE AGNOSTIC

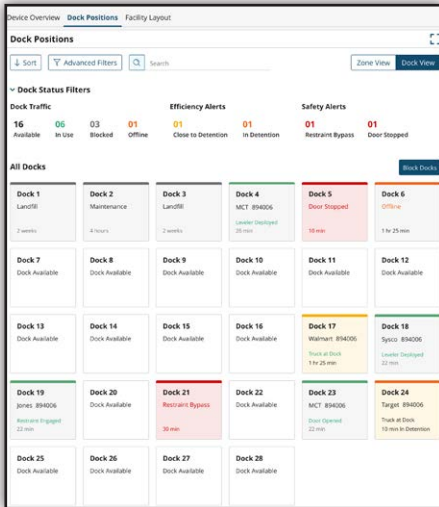
Login online anywhere, at anytime from a desktop, tablet or mobile device.



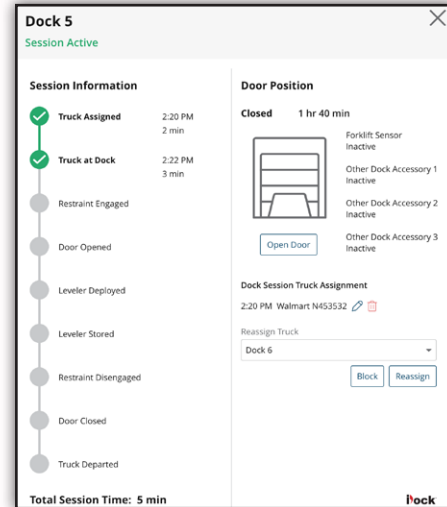
### NOTIFICATIONS

Receive email or text message alerts of events such as trucks approaching load time limits, inefficient loading activity, unrestrained trailers, doors left open, after hours activity, and more.

# Real-Time Dock Activity

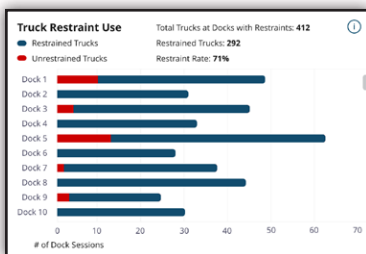


Quickly see the current status of each loading dock in real time, with colors and alerts of inefficiencies or safety concerns.

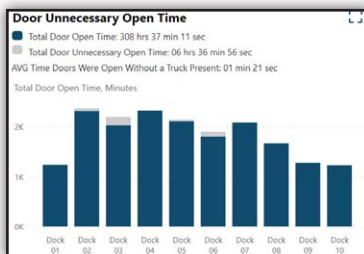


Open any current truck-at-dock session to review time stamps of activity or assign carrier information.

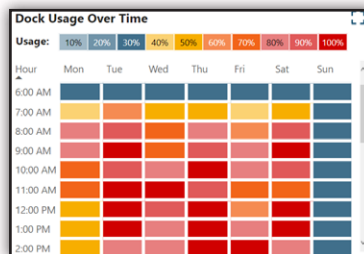
## Loading Dock Analytics



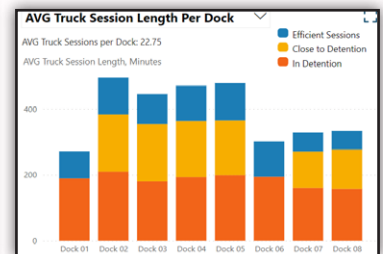
Monitor the amount of unrestrained vs. restrained trailers per dock during any date range



Check the amount of time any dock doors are unnecessarily left open without a truck present.



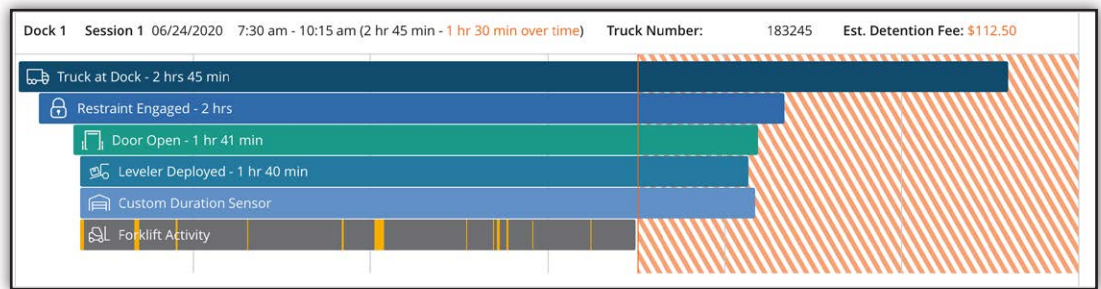
See what days and hours your docks are the busiest on average during a selected period of time.



Review the number of trucks serviced at each dock, average load times, and any amount of detention time.



Compare and manage any incurred detention fees by carrier or date.



Analyze individual truck-at-dock sessions to correct any inefficiencies or evaluate estimated detention fees.

