



# ADJUSTABLE WORKBENCH



## DISTINCTIVE FEATURES

- Table height can be adjusted according to the current task
- Work standing up or sitting down in the same location
- Height adjustable from 30" to 42"
- Ergonomic, heavy duty and functional
- Manual and electric versions available



EASILY ADJUST THE HEIGHT  
TO SUIT TO THE CURRENT TASK

# ADJUSTABLE WORKBENCH

## IDEAL FOR A RANGE OF ENVIRONMENTS

---

### IDEAL FOR SHIFT CHANGES



With an adjustable workbench, you can create a workspace that provides optimal comfort, safety, security and efficiency. Available in both manual and electric versions, it offers many benefits for users. With the manual version, you can quickly go from a sitting position at 30" to standing at 42" by turning the crank handle. If you prefer the electric version, you can program up to four different heights to suit the task at hand or the requirements of different users.

### HELPS TO MAINTAIN GOOD POSTURE

Configure and highly personalize your workspace by choosing the dimensions, color, work surface and accessories.

### ERGONOMIC AND FUNCTIONAL



## TYPE OF ADJUSTMENT

---

### ELECTRIC

- Quick and easy programmable mechanism
- Motor integrated into the cylinders
- Includes a 10' power cord
- Press the button to raise or lower the table to the desired or preprogrammed position
- Preprogram up to 4 positions

### MANUAL

- Turn the crank to raise or lower the table
- For use without an electrical connection
- 4 hydraulic cylinders

### MANY DIFFERENT CONFIGURATIONS POSSIBLE



The WM structure can only be installed on the electric version.



Controls

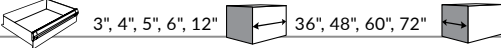


Retractable handle

# FOR AN ERGONOMIC AND FUNCTIONAL WORK ENVIRONMENT

## SPECIFICATIONS

\*Manual workbench : 825lb.  
 \*Electric workbench : 1,125lb.



3", 4", 5", 6", 12"      36", 48", 60", 72"      30", 36"      Height adjustable from 30" to 42"

\* Capacity may vary depending on the choice of top.



### COMPUTER MOUNTS

Sit-stand workstation for better ergonomics

### MULTIPLE TOP AND RISER SHELF OPTIONS

Power outlet(s) and/or USB port available with a riser shelf

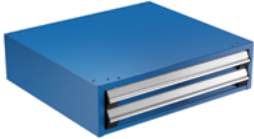


### DRAWER UNIT

Create more space by adding drawers (heavy-duty or compact) under the work surface

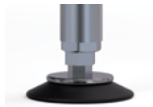
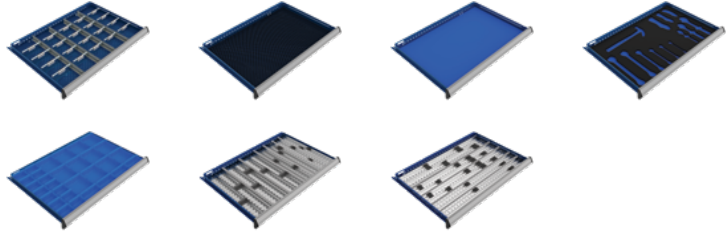


Compact: 100lb. load capacity per drawer



Heavy-duty: 200lb. load capacity per unit

### DRAWER ACCESSORIES



### LEVELING GLIDES

Integrated leveling glides keep your workbench level.

## DID YOU KNOW?

One of Rousseau's biggest strengths is our wide range of color options. Choose from 20 standard colors.



Classic Blue	Avalanche Blue	Everest Blue	Midnight Blue	Glossy Sapphire Blue	Glossy EverGreen	Glossy Yellow	Sienna Orange	Flame Red	Glossy Carmine Red	Glossy Cranberry Red	White	Beige	Frost White	Light Gray	Modern Gray	Charcoal Gray	Glossy Black	Black	Glossy Carbon Black
052	055	051	057	560	1025	208	085	081	806	815	616	041	061	071	745	072	902	091	741

## MOST POPULAR MODELS

Go to [rousseau.com](http://rousseau.com) for more suggested models.



Icons		Icons	
48"	30"	WSN1HH001E	WSN1HH001M
60"	30"	WSN1KH001E	WSN1KH001M
72"	30"	WSN1LH001E	WSN1LH001M

Icons		Icons	
48"	30"	WSN3HH006E	WSN3HH006M
60"	30"	WSN3KH006E	WSN3KH006M
72"	30"	WSN3LH006E	WSN3LH006M

Icons		Icons	
48"	30"	WSN2HH002E	WSN2HH002M
60"	30"	WSN2KH002E	WSN2KH002M
72"	30"	WSN2LH002E	WSN2LH002M



Icons		Icons	
48"	30"	WSN2HH005E	WSN2HH005M
60"	30"	WSN2KH005E	WSN2KH005M
72"	30"	WSN2LH005E	WSN2LH005M

Icons		Icons	
48"	30"	WSN3HH004E	WSN3HH004M
60"	30"	WSN3KH004E	WSN3KH004M
72"	30"	WSN3LH004E	WSN3LH004M

Icons		Icons	
48"	30"	WSN1HH003E	WSN1HH003M
60"	30"	WSN1KH003E	WSN1KH003M
72"	30"	WSN1LH003E	WSN1LH003M

For more information, contact our representative:

**w.w.Cannon, Inc.**  
Design. Layout. Build. Install.  
1-800-442-3061  
[www.wwcannon.com](http://www.wwcannon.com)

 ELECTRIC  
 MANUAL