



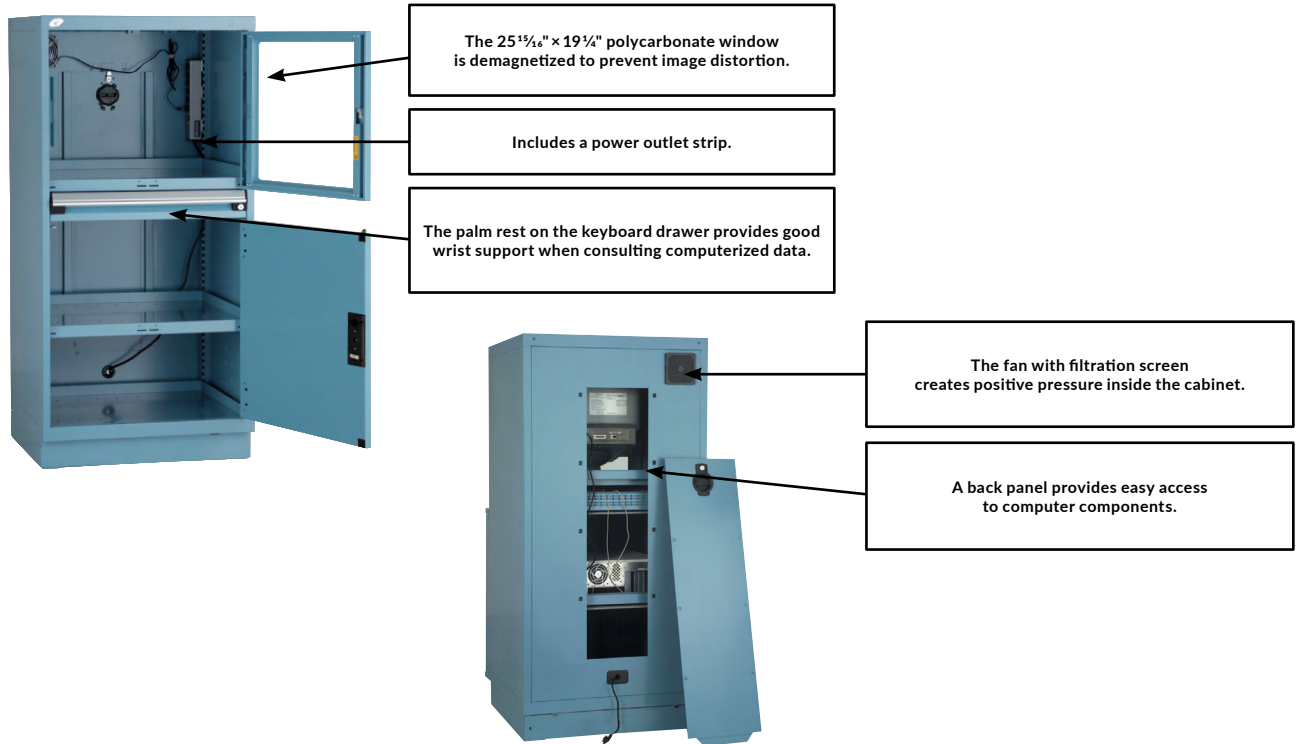
INDEX	PAGE(S)
Computer Station	248
Preconfigured Models . . .	249-253
Components	254-259

COMPUTER STATION

With our vast range of products and accessories, you can create a customized computer station tailored to your needs. Whether you need a simple computer cabinet, look-up station or fully-equipped workstation with extra storage and accessories, we have the ideal solution. Our products are designed for industrial use (production floor, packing, maintenance and repair, machine shops, etc.), but their attractive design also lends themselves to office environments (laboratories, electronics and IT environments, etc.).

COMPUTER CABINET

Rousseau computer cabinets provide protection for computer equipment. The fan with filter help to remove heat from the unit.



COMPUTER CABINET WITH ADJUSTABLE SHELF

Stationary



R5JDG-5801

- 1 computer cabinet housing with back access panel
- 1 adjustable shelf (for monitor)
- 1 keyboard drawer
- 1 keyboard riser
- 1 adjustable shelf (for printer)
- 1 bottom shelf (for computer)
- 1 polycarbonate door for monitor
- 1 single integrated door

Stationary cabinet includes:

- 1 recessed base (front access)
- 1 back kick plate

Mobile cabinet includes:

- 2 rigid casters, 4"
- 2 swivel casters with total-lock brake, 4"

MODEL	PRODUCT NO.	W x D x H
Stationary	R5JDG-5801	30" x 27" x 62"
Mobile	R5JDG-5821	30" x 27" x 63 ¹ / ₄ "

Mobile



R5JDG-5821



PRECONFIGURED MODELS

COMPUTER CABINET WITH ROLL-OUT SHELF

Stationary



R5JDG-5815

- 1 computer cabinet housing with back access panel
- 1 adjustable shelf (for monitor)
- 1 keyboard drawer
- 1 keyboard riser
- 1 front access roll-out shelf (for printer)
- 1 bottom shelf (for computer)
- 1 polycarbonate door for monitor
- 1 single integrated door

Stationary cabinet includes:

- 1 recessed base (front access)
- 1 back kick plate

Mobile cabinet includes:

- 2 rigid casters, 4"
- 2 swivel casters with total-lock brake, 4"

MODEL	PRODUCT NO.	W×D×H
Stationary	R5JDG-5815	30"×27"×62"
Mobile	R5JDG-5837	30"×27"×63¼"

Mobile



R5JDG-5837



COMPUTER CABINET WITH TWO ROLL-OUT SHELVES

Stationary



R5JDG-5819

- 1 computer cabinet housing with back access panel
- 1 adjustable shelf (for monitor)
- 1 keyboard drawer
- 1 keyboard riser
- 1 front access roll-out shelf (for printer)
- 1 front access roll-out shelf (for computer)
- 1 polycarbonate door for monitor
- 1 single integrated door

Stationary cabinet includes:

- 1 recessed base (front access)
- 1 back kick plate

Mobile cabinet includes:

- 2 rigid casters, 4"
- 2 swivel casters with total-lock brake, 4"

MODEL	PRODUCT NO.	W×D×H
Stationary	R5JDG-5819	30"×27"×62"
Mobile	R5JDG-5839	30"×27"×63¼"

Mobile

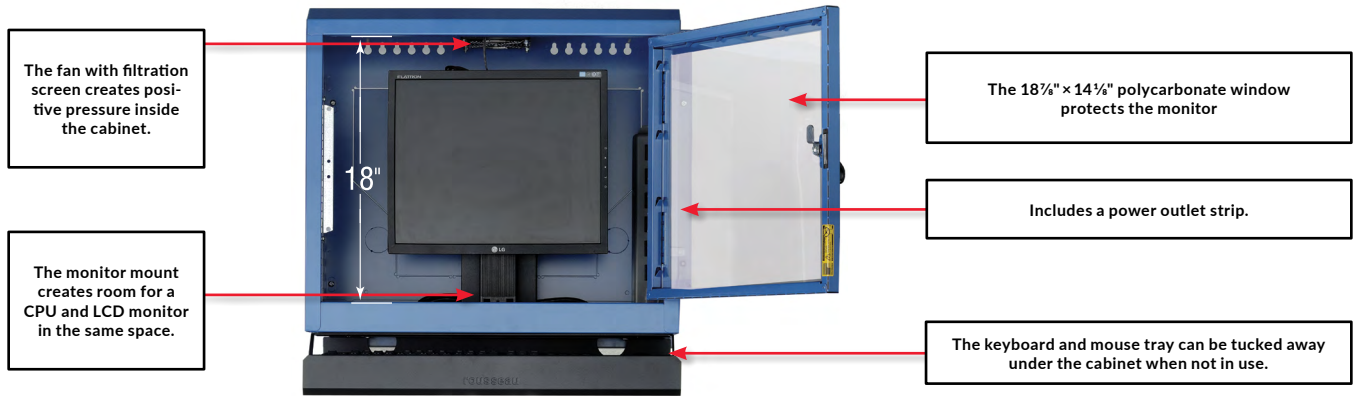


R5JDG-5839

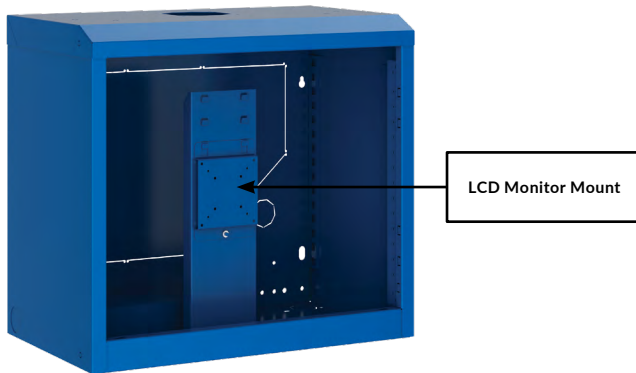


WALL-MOUNTED COMPUTER CABINET

Our wall-mounted computer cabinet is an interesting alternative to conventional computer cabinets. You can choose from various door and keyboard tray configurations to meet your specific requirements.



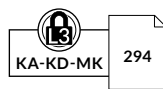
WALL-MOUNTED COMPUTER CABINET WITH CHOICE OF CONFIGURATIONS



- Cabinet dimensions: 24"W x 14"D x 21"H
- Polycarbonate window dimensions: 18 7/8"W x 14 1/8"H
- Keyboard tray's usable area: 22 1/2"W x 14 1/2"D

PRODUCT NO.	TYPE
R5MCA-2450	Wall-mounted cabinet only
R5MCA-2451	Wall-mounted cabinet with polycarbonate door
R5MCA-2452	Wall-mounted cabinet with keyboard and mouse tray
R5MCA-2453	Wall-mounted cabinet with polycarbonate door, and keyboard and mouse tray
R5MCA-2454	Wall-mounted cabinet with flipper door and laptop tray

NOTES: Wall-mounted cabinets include an LCD monitor mount.
Model R5MCA-2454 is sold without the fan and power outlet strip.



NOTE: A RD47 tray can also be installed under an RD02 cabinet to hold a laptop.

PRECONFIGURED MODELS

WORKSTATION

Some of our most popular computer workstations are shown below. Please refer to the Workcenters – WS/WM section for the various accessories and configurations available, [see pages 164-171](#).

COMPUTER WORKSTATION WITH CPU HOLDER



LC3006C

PRODUCT NO.	W×D×H
LC3006C	60"×30"×58"

- 1 CPU holder
- 1 laminated hardwood top
- 1 open leg
- 1 L Compact Cabinet
- 3 multi-purpose uprights
- 2 upright crossmembers
- 1 adjustable keyboard tray
- 1 LCD monitor mount
- 1 power outlet module
- 1 tiltable shelf
- 2 plastic bin rails
- 8 plastic bins
- 2 partial dividers

COMPUTER WORKSTATION WITH MONITOR AND KEYBOARD ARM



LC3005C

PRODUCT NO.	W×D×H
LC3005C	60"×30"×68"

- 1 double WM bench frame
- 1 LCD monitor and keyboard arm
- 1 tiltable shelf
- 3 partial dividers
- 1 plastic bin rail
- 4 plastic bins
- 1 power outlet module with three 12A outlets
- 1 tackboard / whiteboard
- 1 panel bracket kit
- 1 laminated hardwood top
- 1 open leg
- 1 L Compact Cabinet

COMPUTER WORKSTATION WITH TABLET ARM



LC3123C

PRODUCT NO.	W×D×H
LC3123C	60"×30"×80"

- 1 double WM bench frame
- 1 tablet arm
- 2 tiltable shelves
- 4 partial dividers
- 2 plastic bin rails
- 6 plastic bins
- 1 power outlet channel with 3 power outlets (12A) and 2 USB ports
- 1 storage cabinet with door
- 1 overhead LED workstation light
- 1 pair of cantilever overhead supports
- 1 lamp with magnifier and LED light
- 1 plastic laminate top
- 1 open leg
- 1 L Compact Cabinet with 4"H base

FREESTANDING STATIONS

Some popular freestanding station configurations are shown below. Please refer to the Freestanding Station section for the various accessories available, [see pages 164-171](#).

OFF-CENTERED MODEL



WMA4061

PRODUCT NO.	W×D×H
WMA4061	32"×27"×85"

- 1 off-centered WM stand, 84"H
- 1 LCD monitor arm and keyboard & mouse tray
- 1 document holder with arm
- 1 tackboard / whiteboard
- 1 panel bracket kit
- 1 tiltable shelf
- 2 partial dividers
- 1 plastic bin rail
- 3 plastic bins
- 1 bottom shelf with ribbed mat

CENTERED MODEL



WMA3051

PRODUCT NO.	W×D×H
WMA3051	32"×27"×85"

- 1 centered WM stand, 84"H
- 2 laptop trays
- 2 utility panels
- 1 panel bracket kit
- 1 document holder
- 2 plastic bin rails
- 6 plastic bins
- 2 tiltable shelves
- 1 pack of 10 double back single hooks
- 2 cantilever overhead supports
- 2 overhead LED workstation lights
- 1 bottom shelf with ribbed mat

COMPONENTS

COMPUTER CABINET

COMPUTER CABINET HOUSING WITH BACK ACCESS PANEL

RD31



- Includes a fan with filtration screen
- Includes a power outlet strip
- Back panel provides easy access to computer components. Includes a lock
- Includes a grommet to run cables through

- Compatible with 4" and 6" casters
- Compatible with RA53 forklift bases, RA55 recessed bases and RB94/RB95 base risers

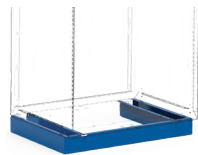
PRODUCT NO.	W×D×H
RD31-302758L3	30" × 27" × 58"



NOTE: Ordering a riser base (RA55, RB94 or RB95) is strongly recommended for using in a standing position or for taller people.

RECESSED BASE

RA55



- Raises the height of a cabinet by 4"
- Can be used to move the cabinet from the front with a forklift or pallet truck
- Includes a removable kick plate at the front for a neater finish and for moving the cabinet from the front
- The front kick plate spans the full width for easier floor cleaning
- Compatible with an optional RA56 kick plate at the back (front kick plate is included)
- Compatible with RA74 leveling glides
- Designed so the cabinet can be anchored to the floor

PRODUCT NO.	W×D×H
RA55-302704	30" × 27" × 4"

NOTE: Not compatible with casters.

RISER BASE

RB95



- Raises the height of a cabinet by 8"
- Provides improved ergonomics for taller people
- Installs directly under the cabinet
- Can be used for moving the cabinet from the front with a forklift
- Compatible with RA74 leveling glides
- Compatible with an optional RB98 kick plate at the back (front kick plate is included)

PRODUCT NO.	W×D×H
RB95-302708	30" × 27" × 8"

NOTE: Not compatible with casters.

RISER BASE FOR MOBILE CABINET

RB94

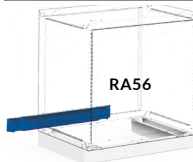


- Raises the height of a mobile cabinet by 4"
- Provides improved ergonomics for taller people
- Installs directly under the cabinet
- Compatible with 4" and 6" casters

PRODUCT NO.	D×H
RB94-2704	27" × 4"

KICK PLATE

RA56 / RB98



- RA56 Closes off the back of 4"H recessed bases (RA55)
- RB98 Closes off the back of riser bases (RB95)

PRODUCT NO.	W×H	FOR
RA56-3004	30" × 4"	RA55
RB98-3008	30" × 8"	RB95



LEVELING GLIDE KIT

RA74



- Sold in kits of 4
- Adjusts the height of cabinets 1½" to 2" on uneven floor surfaces
- Installs directly under a cabinet without base or under RB95 riser bases

PRODUCT NO.
RA74-01

ADJUSTABLE SHELF

RB21



- For storage of bulky items
- The back and side edges prevent objects from falling to the bottom of the cabinet
- Height can be adjusted in 1" increments c/c
- Load capacity of up to 400lb., evenly distributed

PRODUCT NO.	W × D
RB21-3027	30" × 27"

BOTTOM SHELF

RB25



- For storage of bulky items
- The back and side edges prevent objects from falling to the bottom of the cabinet
- Load capacity of up to 400lb., evenly distributed

PRODUCT NO.	W × D
RB25-3027	30" × 27"

CASTERS

RB81 / RB84



- Sold in pairs
- Three types of casters available: rigid, swivel and swivel with total-lock brake (on wheel and swivel)
- 4" caster: 5¼"H total
- 6" caster: 7½"H total
- Heavy-duty, non-marking polyurethane casters; Superior industrial quality
- Casters are installed directly under a cabinet without base or under RB94 riser bases for mobile cabinets

PRODUCT NO.	HEIGHT	CASTER TYPE
RB81-01	4"	Rigid
RB81-02	4"	Swivel
RB81-03	4"	Swivel with total-lock brake
RB84-01	6"	Rigid
RB84-02	6"	Swivel
RB84-03	6"	Swivel with total-lock brake

KEYBOARD RISER

RD40



- Raises the keyboard and mouse into an ergonomic position
- Includes a palm rest
- Leaves room for a standard ring binder (12"D) to be stored behind the keyboard
- Leaves room for the drawer to be subdivided with partitions, dividers and plastic bins

PRODUCT NO.	W × D × H
RD40-301204	30" × 12" × 4"

KEYBOARD DRAWER

RF31



- A standard ring binder (12"D) can be stored behind the keyboard
- Can be subdivided with partitions, dividers and plastic bins [see pages 242-245](#)
- Standard lock included

PRODUCT NO.	W × D × H
RF31-302704L3	30" × 27" × 4"



ROLL-OUT SHELF FOR SINGLE INTEGRATED DOOR

RF55



- For storage of bulky items
- Compatible with RB62 integrated doors
- 65% extension
- Load capacity: 175lb.
- Painted steel with edges on the sides and back
- Full access to contents

PRODUCT NO.	W × D
RF55-3027	30" × 27"

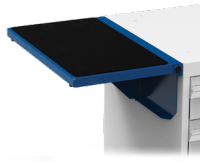
NOTE: To retrofit this product, order an RF56-3027.

NOTE: Ordering an RD40 keyboard riser is strongly recommended to place the keyboard and mouse in an ergonomic position.

COMPONENTS

FOLDAWAY SHELF

RC00

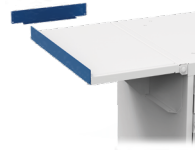


- Load capacity: 50lb. (evenly distributed)
- Includes a protective rubber surface
- Compatible with optional RCO1 side and back stops for foldaway shelf

PRODUCT NO.	W × D
RC00-152701	15" × 27"

SIDE AND BACK STOPS FOR FOLDAWAY SHELF

RC01



- Use the 15" stop for front or back of shelf
- Use the 27" stop for the sides
- Height: 1"

PRODUCT NO.	WIDTH
RC01-15	15"
RC01-27	27"

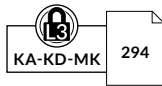
POLYCARBONATE DOOR FOR MONITOR

RD51



- The 24¹⁵/₁₆"W × 19¹/₄"H polycarbonate window
- Factory installed on RD31 cabinet housings
- Standard lock included

PRODUCT NO.	W × H
RD51-3022L3	30" × 22"



SINGLE INTEGRATED DOOR, SOLID OR POLYCARBONATE

RB62 / RB61



- Integrated door: RB62
- Polycarbonate integrated door: RB61
- Compatible with RB25 bottom shelves, RB21 adjustable shelves and RF55 roll-out shelves
- Opens 180° for full access to items stored inside
- Factory installed on RD31 cabinet housings
- Add L3 to the product number for a standard lock, and L50 for an electronic lock



PRODUCT NO.	W × H
RB62-3028__	30" × 28"
RB61-3028__	30" × 28"

ACCESSORIES UNDER THE WORK SURFACE

SLIDING KEYBOARD TRAY

WS90



- Installs under all types of top
- Mouse tray slides to the left or right as required
- Usable surface area: 21 1/2"W × 11 3/16"D
- Mouse tray: 9 3/8"D × 9 3/8"W

PRODUCT NO.	COLOR
WS90-01	Black

ADJUSTABLE KEYBOARD TRAY

WS90



- Mount with an articulating arm for working while sitting or standing
- Installs under all types of top
- Includes:
 - Mouse tray that slides to the left or right
 - Ergonomic palm wrist
- Usable surface area: 9 1/2"D × 20 1/2"W
- Mouse tray: 9 3/8"D × 9"W

PRODUCT NO.	COLOR
WS90-02	Black

CPU HOLDER

WS92



- Installs under all types of top
- Includes a handle for adjusting the width of the plastic side support
- Adjustable to hold computer cases from 3 1/2"W to 9 1/4"W by 12 1/2"H to 22 1/2"H
- Width: 8 3/4" to 11 1/2"
- Depth: 6 3/4" (8 1/2" with handle)
- Height: 18" to 26"

PRODUCT NO.	COLOR
WS92-01	Black

COMPUTER MOUNTS FOR WORK SURFACES

All models featured here have the following characteristics:

- Installs on the work surface with an RC68 or RC69 cover panel for electronics mounts
- Compatible with the following work surfaces: RC35, RC37, WS08, WS14 and WS16
- Includes an 18"H pole for height adjustment to suit each user
- The work surface must extend beyond the rear by 1½"
- Articulating arms, adapters and trays are painted black
- Does not install directly on the housing
- Height can be easily adjusted, no tools required
- Optimum ergonomics

LCD MONITOR ARM



- Compatible with most LCD monitors (max. 21") on the market
- Complies with VESA 75 and 100 monitor mounting standards
- Includes one or two articulating arm(s) with two joints
- The articulating arm with two joints provides extra adjustment options
- Screen can be rotated and tilted
- Single and dual arm versions are available

PRODUCT NO.	FOR
RC59-03	Single Monitor
RC59-04	Two Monitors

LAPTOP ARM



- Holds a laptop, electronic device or any other object
- Tray's usable area: 14"W × 12"D
- Includes an articulating arm with two joints
- The articulating arm with two joints provides extra adjustment options
- Tray can be rotated and tilted

PRODUCT NO.
RC59-42

LCD MONITOR MOUNT AND KEYBOARD & MOUSE ARM



- Holds a computer monitor, keyboard and mouse
- Keyboard tray's usable area: 23¾"W × 8½"D
- Includes an articulating arm with a single joint
- Compatible with most LCD monitors (max. 21") on the market
- Complies with VESA 75 and 100 monitor mounting standards
- Screen and tray can be rotated and tilted

PRODUCT NO.
RC59-21

TABLET ARM



- Compatible with most tablets on the market
- The clamps and mount have a non-slip surface to keep the tablet stable
- Includes an articulating arm with two joints
- The articulating arm with two joints provides extra adjustment options
- Tablet can be rotated and tilted
- Compatible tablet sizes:
 - Small: 7¾"W to 10"W
 - Large: 9¾"W to 12¼"W

PRODUCT NO.	FOR
RC59-62-01	Small tablet
RC59-62-02	Large Tablet

COMPONENTS

COMPUTER MOUNTS FOR WM FRAMES AND WALL-MOUNTED APPLICATIONS

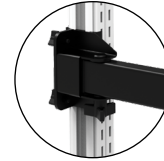
IMPORTANT

All models featured below have the following characteristics:

- Color: black
- Superior durability
- Easy adjustment
- Anchoring hardware not included in the wall-mounted version



Wall-Mounted



For WM11 Frame



Double Articulating Arm

LAPTOP ARM



- Holds a laptop, electronic device or any other object
- Tray's usable area: 16"W x 13⁷/₈"D
- Includes a heavy-duty articulating arm with one or two joints
- The heavy-duty articulating arm with two joints provides extra adjustment options
- The tray includes a non-slip rubber mat

JOINTS	FOR WM11 FRAME	WALL-MOUNTED
Single	WM62-01A	WM64-01A
Double	WM62-02A	WM64-02A

LCD MONITOR ARM



- Compatible with most LCD monitors on the market
- Complies with VESA 75 and 100 monitor mounting standards
- Includes a heavy-duty articulating arm with one or two joints
- The heavy-duty articulating arm with two joints provides extra adjustment options
- Monitor can be rotated and tilted

JOINTS	FOR WM11 FRAME	WALL-MOUNTED
Single	WM65-01A	WM66-01A
Double	WM65-02A	WM66-02A

LCD MONITOR ARM AND KEYBOARD & MOUSE TRAY



- Holds a computer monitor, keyboard and mouse
- Compatible with most LCD monitors on the market
- Complies with VESA 75 and 100 monitor mounting standards
- Keyboard tray's usable area: 23³/₈"W x 8¹/₂"D
- Includes a heavy-duty articulating arm with one or two joints
- The heavy-duty articulating arm with two joints provides extra adjustment options
- Screen can be rotated and tilted

JOINTS	FOR WM11 FRAME	WALL-MOUNTED
Single	WM65-01B	WM66-01B
Double	WM65-02B	WM66-02B

TABLET ARM



- Compatible with most tablets on the market
- The clamps and mount have a non-slip surface to keep the tablet stable
- Compatible tablet sizes:
 - Small: 7⁵/₈"W to 10"W
 - Large: 9⁷/₈"W to 12¹/₄"W
- Tablet can be rotated and tilted
- Includes a heavy-duty articulating arm with one or two joints

JOINTS	TABLET SIZE	FOR WM11 FRAME	WALL-MOUNTED
Single	Small	WM65-01C-01	WM66-01C-01
Single	Large	WM65-01C-02	WM66-01C-02
Double	Small	WM65-02C-01	WM66-02C-01
Double	Large	WM65-02C-02	WM66-02C-02

IMPORTANT

All models featured below have the following characteristics:

- Color: black
- Height can be easily adjusted, no tools required
- Optimum ergonomics
- Anchoring hardware not included in the wall-mounted version

LCD MONITOR ARM



- Compatible with most LCD monitors (max. 21") on the market
- Complies with VESA 75 and 100 monitor mounting standards
- Includes one or two articulating arm(s) with two joints
- The articulating arm with two joints provides extra adjustment options
- Monitor can be rotated and tilted

PRODUCT NO.	FOR
WM05-03	WM11 Bench Frame
WM06-03	Wall-Mounted

LAPTOP ARM



- Holds a laptop, electronic device or any other object
- Tray's usable area: 14"W x 12"D
- Includes an articulating arm with two joints
- The articulating arm with two joints provides extra adjustment options
- Tray can be rotated and tilted

PRODUCT NO.	FOR
WM05-42	WM11 Bench Frame
WM06-42	Wall-Mounted

TABLET ARM



- Compatible with most tablets on the market
- The clamps and mount have a non-slip surface to keep the tablet stable
- Includes an articulating arm with two joints
- The articulating arm with two joints provides extra adjustment options
- Tablet can be rotated and tilted
- Compatible tablet sizes:
 - Small: 7 $\frac{3}{8}$ "W to 10"W
 - Large: 9 $\frac{7}{8}$ "W to 12 $\frac{1}{4}$ "W

TABLET SIZE	FOR WM11 FRAME	WALL-MOUNTED
Small	WM05-62-01	WM06-62-01
Large	WM05-62-02	WM06-62-02

LCD MONITOR ARM AND KEYBOARD & MOUSE ARM



- Holds a computer monitor, keyboard and mouse
- Keyboard tray's usable area: 23 $\frac{3}{8}$ "W x 8 $\frac{1}{2}$ "D
- Includes an articulating arm with a single joint and an articulating arm with two joints
- The articulating arm with two joints provides extra adjustment options
- Compatible with most LCD monitors (max. 21") on the market
- Complies with VESA 75 and 100 monitor mounting standards
- Screen and tray can be rotated and tilted

DESCRIPTION	FOR WM11 FRAME	WALL-MOUNTED
Complete kit	WM05-22	WM06-22
LCD Monitor Arm	WM05-02	WM06-02
Keyboard & Mouse Arm	WM05-32	WM06-32

LCD MONITOR MOUNT AND KEYBOARD & MOUSE TRAY



- Holds a computer monitor, keyboard and mouse
- Keyboard tray's usable area: 23 $\frac{3}{8}$ "W x 8 $\frac{1}{2}$ "D
- Includes an articulating arm with a single joint
- Compatible with most LCD monitors (max. 21") on the market
- Complies with VESA 75 and 100 monitor mounting standards
- Screen and tray can be rotated and tilted

PRODUCT NO.	DESCRIPTION
WM06-21	Wall-Mounted Kit
WM06-01	LCD Monitor Mount
WM06-31	Keyboard & Mouse Arm

