



MULTI-LEVEL SHELVING

Not enough space? Before you embark on an expansion project, consider Rousseau multi-level shelving, which makes efficient use of vertical space, as well as depth and width.

Our specialists will suggest solutions to work around all your building's obstacles: beams, columns, doors, air ducts, building structure, etc.

Rousseau multi-level shelving maximizes your storage potential by combining shelving, modular drawers and Mini-Racking, and adapting everything to your inventory. The system allows you to store more parts in less space, while also reducing trips back and forth and therefore wasted time.

Big challenges need big solutions!

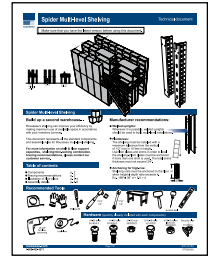


EXPERTISE THAT LEAVES NOTHING TO CHANCE

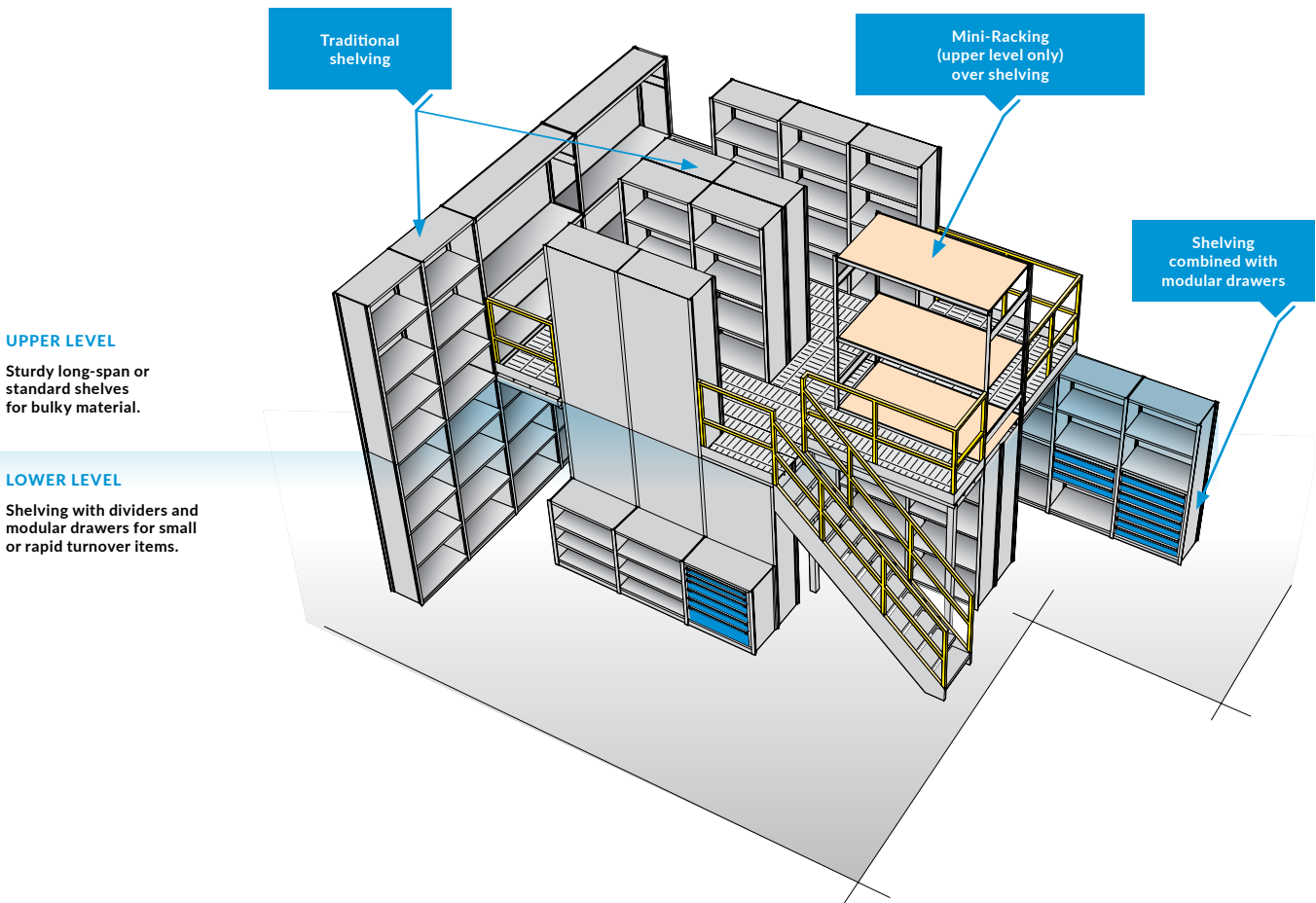
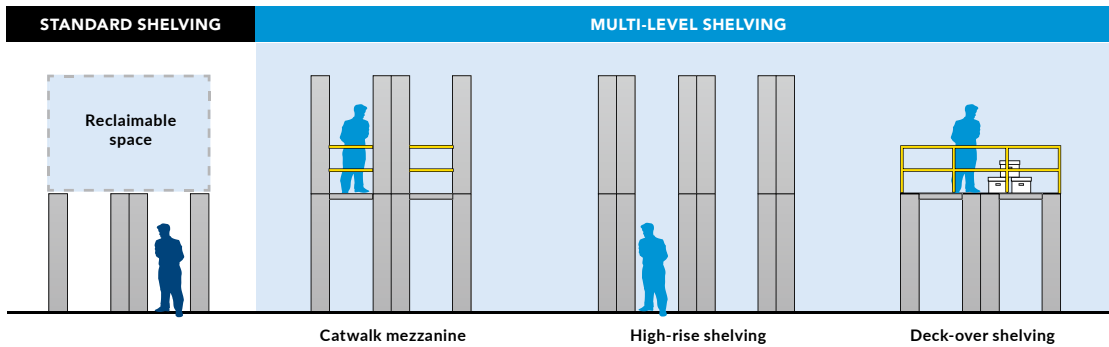
IMPORTANT

Multi-level shelving systems are subject to standards and recommendations in earthquake-prone regions. Rousseau project managers are available to help you work out what shelving and sway bracing you need and help complete your multi-level shelving project. Call Rousseau's sales department and ask to speak to one of our project managers..

NOTE: For technical specifications, please refer to technical guide S05 Multi-Level Shelving.



SOLUTIONS



NOTE: Stairs, guardrails and ramps are not supplied by Rousseau.

STACK & STORE CABINET MEZZANINE

MORE STORAGE, SAME FLOOR SPACE

Our Stack & Store Cabinet Mezzanine is a turnkey solution and includes: ground-level cabinets, stacked cabinets, floor panels, railing and stairs.

It provides easily accessible high-density storage on two levels.

It is quick and easy to install, and the ground-level cabinets are pre-drilled for easy installation of the railing and floor panels. It can also be moved or reconfigured as needed.



UPPER LEVEL
Items with lower turnover and/or lighter

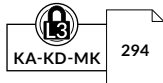
LOWER LEVEL
Items with higher turnover and/or heavier

CABINET HOUSING FOR MEZZANINE

RA38



- Compatible with modular drawers, roll-out shelves, adjustable shelves and bottom shelves
- Includes 8 holes on top for securing RA91 railing and RA93 floors, and for the option of stacking cabinets
- Includes a concrete-floor anchoring kit for cabinet housings and bases, and hardware for stacking cabinets
- An RA52 base is required, [see page 20](#)
- For factory installation of an electronic lock, order an RB00-DDHHL50, [see page 11](#)
- To order a One-Drawer-at-a-Time mechanism, add A to the product number



PRODUCT NO.	W×D×H	TYPE OF LOCK
RA38-302758L3_	30"×27"×58"	Keys
RA38-302758LP_	30"×27"×58"	Safety hasp

NOTES: The height specified refers to the height of the housing excluding the base.
For RA30 housing units, [see page 19](#).
30"D housing also available. Contact Customer Service.

END RAILING

RA92



- The railing complies with 42"H safety standards

PRODUCT NO.	D×H
RA92-30	30"×42"

FILLER

RA94



- Fills the space between back-to-back cabinets
- Two heights available: 58"H housings with 2" base (total 60"H) or 4" base (total 62"H)
- Installs at an aisle end without stairs (not compatible with stairs)

PRODUCT NO.	D×H
RA94-03060	3"×60"
RA94-03062	3"×62"

CABINET SPACER

RA96



- Maintains a consistent space between back-to-back cabinets
- Order an RA96 for each cabinet under the floor
- Anchoring hardware included

PRODUCT NO.	DEPTH
RA96-03	3"

STAIRS

RA90

- Includes six 9½"D treads
- Clear width of 26½"
- Galvanized steel treads with non-slip surface
- Two heights available: 58"H housings with 2" base (total 60"H) or 4" base (total 62"H)
- One or two handrails

PRODUCT NO.	W×D×H	NO. OF HANDRAILS
RA90-306060-01	30"×60"×60"	1
RA90-306060-02	30"×60"×60"	2
RA90-306062-01	30"×60"×62"	1
RA90-306062-02	30"×60"×62"	2



1 handrail



2 handrails

AISLE RAILING

RA91

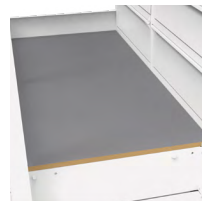


- The railing complies with 42"H safety standards
- Installs in the pre-drilled holes in RA38 housings

PRODUCT NO.	W×H
RA91-30	30"×42"
RA91-60	60"×42"

FLOOR PANEL

RA93



- Heavy-duty wood fiber floor section
- Stain and scratch resistant
- Easy-to-clean, non-slip surface

PRODUCT NO.	W×D
RA93-3030	30"×30"
RA93-6030	60"×30"

FLOOR ANCHOR AND SHIM PLATES

RA95 / RA97



- 12ga galvanized steel
- The RA95 floor anchor plate acts as a base for anchoring the stair to the ground
 - Sold in pairs
 - Includes floor anchoring hardware
- The RA97 shim plate is used to level the stairs. It slides under the floor anchoring plate
 - Sold individually

PRODUCT NO.	TYPE
RA95-01	Floor Anchor Plate
RA97-12	Shim Plate