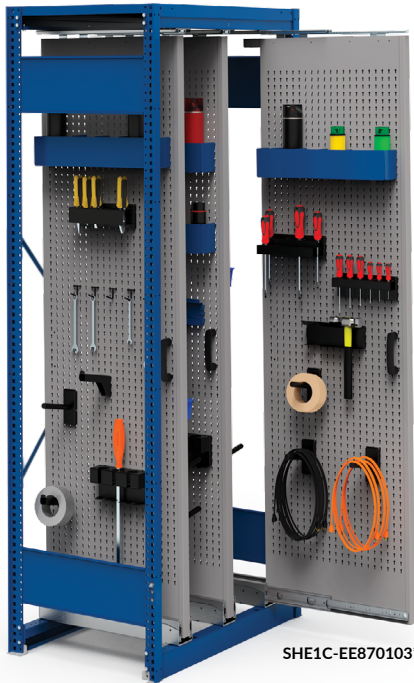




SLIDING UTILITY PANEL

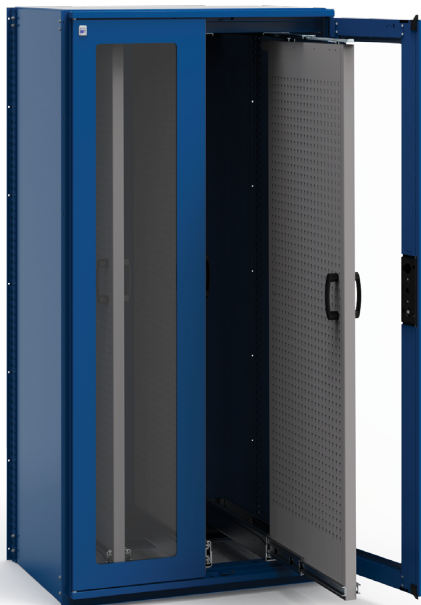


SHE1C-EE870103*

DISTINCTIVE FEATURES

- For storing a wide range of items: tools, straps, cables, pipes, gaskets, etc.
- Load capacity: 300lb. per panel (weight evenly distributed)
- Compatible with open and closed Spider® Shelving
- Panels width adjustable in 1" increments c/c
- Wide range of 5S accessories available: light-duty hooks, heavy-duty hooks, tool holders, can holders, etc.
- Made in North America

OPTIMIZE YOUR FLOOR SPACE USAGE!



SRD2C-EE750103D



SRX9001

SOME OF OUR MOST POPULAR MODELS



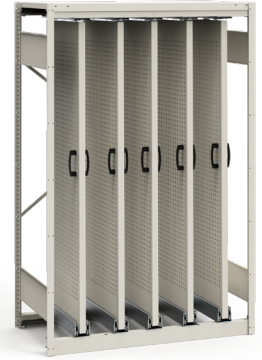
W × D × H	
30" × 18" × 75"	S_1C-DC750102
30" × 24" × 75"	S_1C-DE750102
30" × 18" × 87"	S_1C-DC870102
30" × 24" × 87"	S_1C-DE870102



W × D × H	
36" × 18" × 75"	S_1C-EE750103
36" × 24" × 75"	S_1C-EE750103
36" × 18" × 87"	S_1C-EE870103
36" × 24" × 87"	S_1C-EE870103



W × D × H	
42" × 18" × 75"	S_1C-GC750104
42" × 24" × 75"	S_1C-GC750104
42" × 18" × 87"	S_1C-GC870104
42" × 24" × 87"	S_1C-GC870104



W × D × H	
48" × 18" × 75"	S_1C-HC750105
48" × 24" × 75"	S_1C-HC750105
48" × 18" × 87"	S_1C-HC870105
48" × 24" × 87"	S_1C-HC870105



W × D × H	
30" × 18" × 75"	S_2C-DC750102
30" × 24" × 75"	S_2C-DE750102
30" × 18" × 87"	S_2C-DC870102
30" × 24" × 87"	S_2C-DE870102



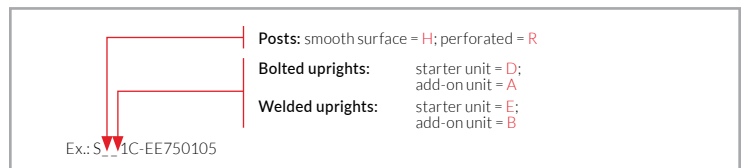
W × D × H	
36" × 18" × 75"	S_2C-EE750103
36" × 24" × 75"	S_2C-EE750103
36" × 18" × 87"	S_2C-EE870103
36" × 24" × 87"	S_2C-EE870103



W × D × H	
42" × 18" × 75"	S_2C-GC750104
42" × 24" × 75"	S_2C-GC750104
42" × 18" × 87"	S_2C-GC870104
42" × 24" × 87"	S_2C-GC870104



W × D × H	
48" × 18" × 75"	S_2C-HC750105
48" × 24" × 75"	S_2C-HC750105
48" × 18" × 87"	S_2C-HC870105
48" × 24" × 87"	S_2C-HC870105



NOTE: Refer to technical guide S84 for spacing between panels.



The panel support must be anchored to the ground to ensure stability