



**ELEVATE
YOUR
STANDARDS®**

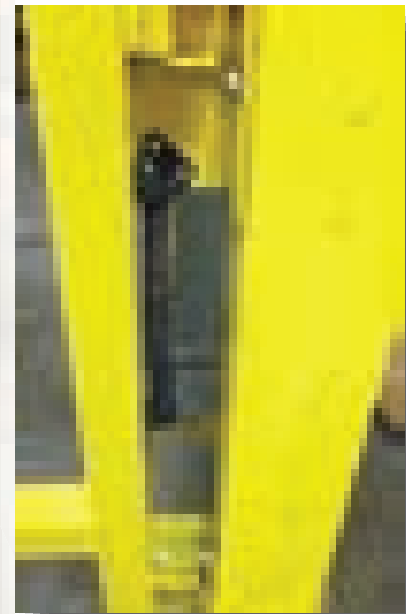
**SaferGate™
Pedestrian
Crossing Gate**

**Safe, convenient access to
equipment.**

The durable Wildeck SaferGate™ Pedestrian Crossing Gate is a safe and convenient way to access areas protected by guard rail in your facility.

This high-performance, self-closing swing gate installs in minutes on new or existing Wilgard® guard rail columns. It is the ideal way to:

- ▶ **Reduce accident potential**
- ▶ **Channel pedestrian traffic to a specific location**
- ▶ **Provide convenient access to protected areas**



GUARDING

SAFERGATE™

GENERAL SPECIFICATIONS

FEATURES AND BENEFITS:

Wildeck's high-performance SaferGate™ Pedestrian Crossing Gate is a convenient way to reduce accident potential in your facility by channeling pedestrians to specific areas.

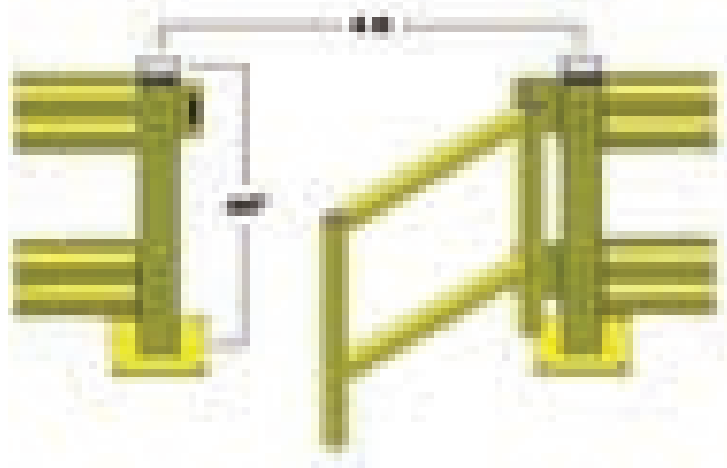
The SaferGate™ is designed for easy field retrofit and maximum durability and reliability. The gate is painted safety yellow for high visibility with a tough polyurethane finish that can withstand a high volume of traffic.



SPECIFICATIONS:

- ▶ Self-closing, spring-loaded hinges, tested to withstand over 100,000 cycles.
- ▶ Installs in minutes, and replaces a 4' section of Wilgard® guard rail without modification to existing columns.
- ▶ Bright yellow polyurethane finish stands up to daily use.
- ▶ Creates 34-5/8" clear opening for pedestrian or cart traffic.
- ▶ Gates open out into the aisle, and include a safety latch for personnel.
- ▶ All gate hardware is included.

Assembled Gate



ELEVATE
YOUR
STANDARDS®

w.w.Cannon, Inc.

Design. Layout. Build. Install.

1-800-442-3061
www.wwcannon.com



Precision Gears, Inc.

- EdgeGard™ Folding-Rail Dock Gate
- (3) – EdgeGard™ Straight-Rail Dock Gates
- Wilgard® Guard Rail
- (2) – Laddergard™ Safety Swing Gates
- Custom Safety Handrail

We are very pleased with Wildeck's quality safety products and the outstanding customer service we have received. We would definitely purchase from them again.

Precision Gears' specialized loading dock access needs."

"Wildeck products have an appealing look," Vincze said. "And being a strong steel product, we have confidence in them."

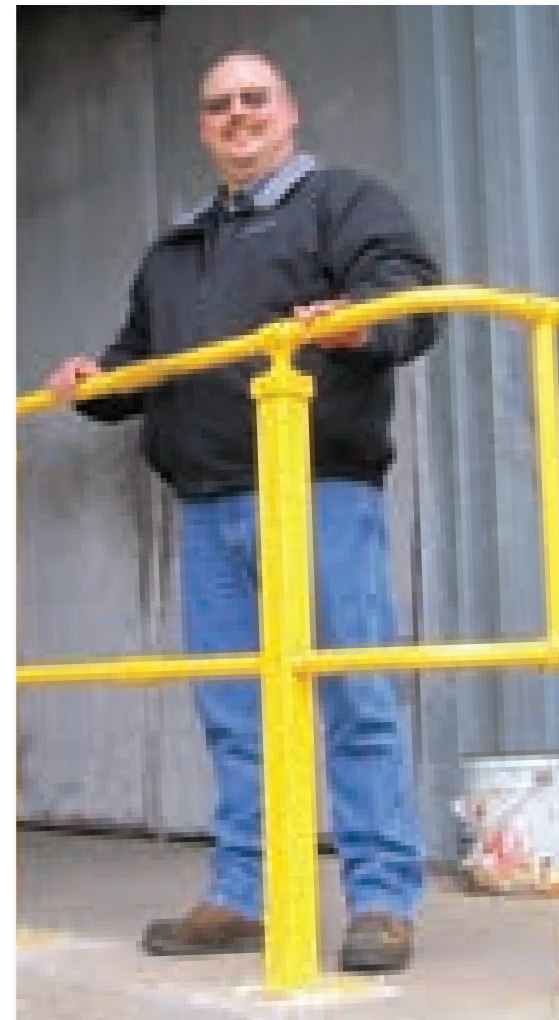
"All of the Wildeck products are working great," Vincze said. "We've had zero complaints from truck drivers or employees."

As with everything Wildeck produces, there is an assurance that comes with all designs. A guarantee that stems from the people who are committed to creating and delivering superior storing, lifting and guarding products that work where you need them, when you need them.

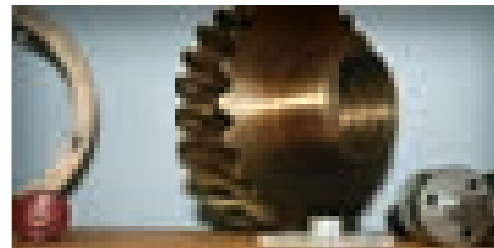
"We are very pleased with Wildeck's quality safety products," he said. "And the outstanding customer service we have received. We would definitely purchase from them again."

The Wildeck safety products protecting Precision Gears' loading dock include:

- EdgeGard™ Folding-Rail Dock Gate
- (3) EdgeGard™ Straight-Rail Dock Gates
- Wilgard® Guard Rail
- (2) Laddergard™ Safety Swing Gates
- Custom Safety Handrail



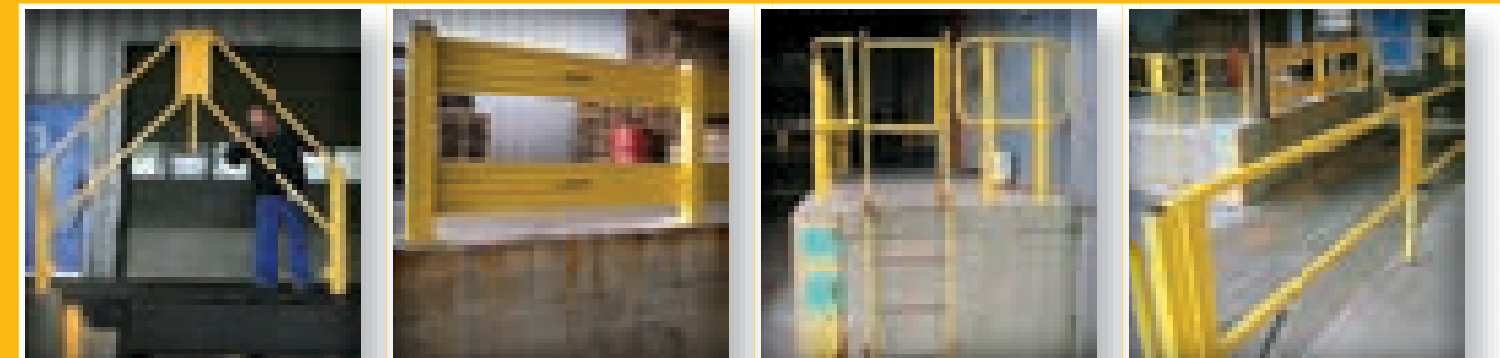
Ronald Vincze, Quality Manager, Precision Gears, Inc.



Precision Gears, Inc.
 N13 W24705 Bluemound Road
 Pewaukee, WI 53072
 Phone: (262) 542-4261
 Fax: (262) 542-1592
 Email: sales@precisiongears.com



Safety First at Precision Gears



Wildeck, Inc.
 405 Commerce Street
 Waukesha, WI 53186
 262-549-4000
 800-325-6939
 Fax 262-549-3466
info@wildeck.com

www.wildeck.com

You could say that Ronald Vincze has a passion for safety.

Vincze, quality manager of Pewaukee, Wis.,-based Precision Gears, Inc., recently evaluated his facility with a critical eye on safety. One area that needed attention was the unprotected ledges on the loading dock in the shipping and receiving area.

Precision Gears (precisiongears.com) is a family run business that operates a state-of-the-art-gear manufacturing facility and is equipped with precision CNC turning, milling, broaching, gear cutting and grinding machinery. It is known as a job-shop manufacturer that meets its customers' specifications. It focuses on the manufacturing of short- and long-run, high-quality precision gears, parts and assemblies.

Vincze began by researching and consulting the Occupational Health and Safety Administration's website for information on unprotected edges. OSHA requires guarding for heights above 48", and after measuring the heights around his loading dock, Vincze believed it was time to look into outfitting the area with better guarding protection.

He returned to the Internet to research dock protection and the types of protective products that would protect Precision Gears employees, visitors and truck drivers from any potential dock accidents. Vincze analyzed numerous supplier websites, including several videos of Wildeck® guarding products on YouTube®. Coincidentally, Wildeck is located just a few miles from Precision Gears in the nearby city of Waukesha. The convenient location and extensive



Unprotected ledges (two inset photos) pose a significant safety hazard to workers, which is why Precision Gears turned to Wildeck® to install guard rail on its loading dock (lower photo).

product offering made Wildeck the right call for Vincze.

Jim Hathaway, Wildeck's guarding products specialist, put Vincze in touch with a local dealer, Jeff Keough, of Capital Equipment & Handling in Hartland, Wis.

"Wildeck focuses on building quality relationships," Hathaway said. "Together, the end user and dealer outlined the application and worked toward finding the best solution. My job is to ensure Wildeck customers get the right combination of products to protect their facility."

Wildeck and Capital Equipment worked

through the application and assessed the needs of Precision Gears' loading dock. Within three days, Vincze had a quote in hand with the recommendation of several Wildeck guarding products to meet his facility's safety requirements.

"I was incredibly happy with the customer service from Capital Equipment & Handling and Wildeck," he said. "I am a big believer in customer service and I could not be more impressed with the response time to get a quote for our project."

Ironically, he was actively working on getting protection installed in the loading dock area when OSHA came

in for a surprise visit to the Precision Gears facility.

As part of their report, OSHA identified that the company needed to add safety guarding protection to the loading dock area.

The loading dock is primarily used for shipping and receiving, including raw goods for manufacturing. Everything Precision Gears needs for manufacturing their products enters through this point in their facility. Albeit the loading dock is fairly typical, it is also equipped with overhead crane access for flatbed trucks. The dock also has a horseshoe configuration with various access points and multiple doors.

Four things to keep in mind with this application:

1. Many people access the area
2. The area has to allow navigation for material up to 30 feet in length
3. Fork truck and overhead cranes need mobility access
4. Delivery truck drivers access the area continually

"The goal was to fully protect the area and do it right the first time," Vincze said. "I wanted to make sure that we had complete protection for our exposed edges for all of our employees. We went beyond the OSHA requirements and installed Wildeck products that protect the exposed edges, protect our employees and provide the access we need to get materials into our bay."

A key feature about Wildeck's guarding products that attracted Vincze is that they are manufactured from steel and are tested for impact resistance.

The variety of Wildeck safety products provided complete safety coverage to all of the access points on the company's loading dock, while meeting the clearance requirements of the dock overhang and the overhead crane.

"The on-site visit by our dealer was so helpful in putting together a complete package to protect the entire area," Hathaway said. "We were able to select from our full lineup of safety guarding solutions to create the product mix that would meet all of

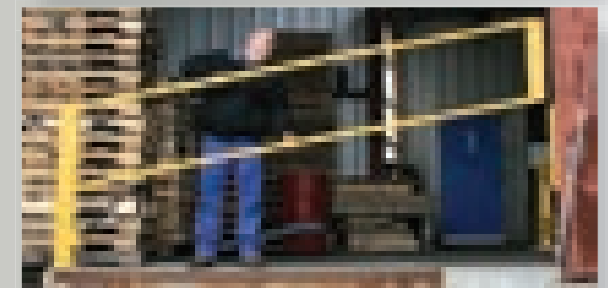
We went beyond the OSHA requirements and installed Wildeck® products that protect the exposed edges, protect our employees and provide the access we need to get materials into our bay.



The EdgeGard Folding-Rail Dock Gates has a pivot point in the center of the gate that folds up and protects a wider opening.



Wildeck's guard rail has a 13,000 pound impact rating, and uses corrugated 11 gauge steel for added strength.



The EdgeGard Straight-Rail design helps protect personnel and equipment from falling off wide truck pits and loading docks.

Wildeck, Inc., headquartered in Waukesha, WI, is the largest manufacturer of mezzanines, vertical lifts and safety guarding products for safe and efficient handling, storage and movement of materials. For more than 35 years, the company has grown through a dedicated and experienced network of customer-service-oriented dealers and systems integrators, nationwide.

For more information on the complete line of Wildeck® products and services, visit www.wildeck.com or e-mail info@wildeck.com.



For more information on mezzanines, gates, stair systems and other Wildeck® products,

JIFFYRAIL™

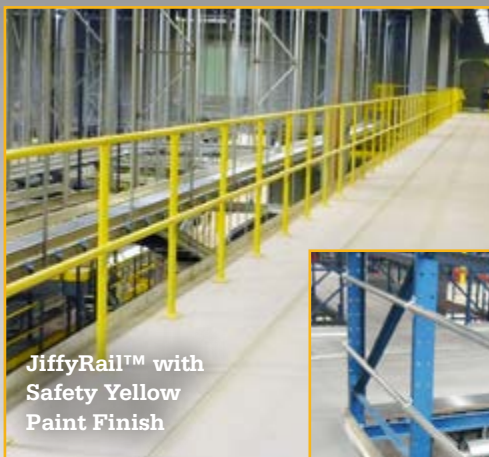
Mezzanine Platform Guard Rail

Open, exposed areas on mezzanine platforms or other elevated surfaces pose a threat to you, your personnel, and your bottom line. Easy-to-install JiffyRail™ will help eliminate these fall hazards by providing strong barrier protection for increased safety and peace of mind.

- ▶ **Helps Reduce Workman's Compensation Claims**
- ▶ **Helps Prevent OSHA Safety Violations**
- ▶ **Designates Pedestrian Traffic Patterns**
- ▶ **Modular, Economic Design**
- ▶ **Industrial Strength for Indoor and Outdoor use**

Ladder Industries (a subsidiary of Wildeck, Inc.) is firmly committed to manufacturing high quality safe access products, and performing with integrity. This has allowed Ladder Industries to emerge as one of the oldest and most dedicated designer/manufacturer of stair and ladder products. We appreciate the loyalty and trust our dealers and customers have placed in our company for over 60 years.

Thank you for considering our products and capabilities—we look forward to finding a solution for your application.



JiffyRail™ with
Safety Yellow
Paint Finish



C-Clamps Directly
to Rack Uprights

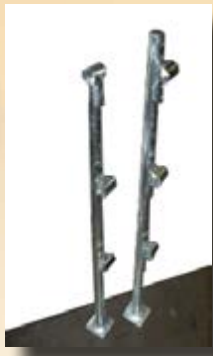
GENERAL SPECIFICATIONS

SPECIFICATIONS:

- ▶ **Exclusive tee & cross fittings furnished prewelded to posts**
- ▶ **All railings made from 1-1/2" steel tubing**
- ▶ **Posts made from 1-5/8" diameter steel tubing**
- ▶ **4" Toe Board**
- ▶ **Standard 4" x 4" Base Plate**
- ▶ **Zinc plating resists corrosion**
- ▶ **Custom paint colors available**

APPLICATIONS:

- ▶ **Mezzanine Platforms**
- ▶ **Access Solution Protection**
- ▶ **Pedestrian Walkways**
- ▶ **Loading Docks**
- ▶ **Pick Modules**
- ▶ **Other Elevated Structures/Surfaces**



**Standard and
Inline Posts**



Corner Post



**EASY
INSTALLATION:**
Simply slide
the rail through
the fittings and
tighten the
screw.



Watch a video
demonstration
by following the
QR code

*All standard products are eligible for Fast Track, allowing your orders to leave our facility at a faster speed.

JIFFYRAIL™ ACCESS GATES



Single and Double Swing Gates

Hinged to the vertical guard rail posts and rolls using an 8 inch wheel. Single gate widths available from 4 to 6 ft, and double gate widths available from 6 to 10 ft.



Impact Gate

Made of heavy duty construction and mounts directly to mezzanine or rack platform railing.



Pallet Drop Zone Gate

Easily pivots into open position and securely locks into closed position. Available in widths from 4 to 8 ft.



A Subsidiary of Wildeck, Inc.





**ELEVATE
YOUR
STANDARDS®**

Laddergard™ Safety Swing Gate

**Keeping personnel safe is a
vital concern in every facility**

High-traffic access ladders can present many risks and are often located in obscure areas. Wildeck's Laddergard™ is the perfect cost-effective solution to improve safety in your facility.

Don't overlook the need for protection in these important areas:

- ▶ **Loading dock ladders**
- ▶ **Mezzanine or platform access**
- ▶ **Rooftop ladders**
- ▶ **Maintenance access ladders**



GUARDING

LADDERGARD™ SWING GATE

GENERAL SPECIFICATIONS

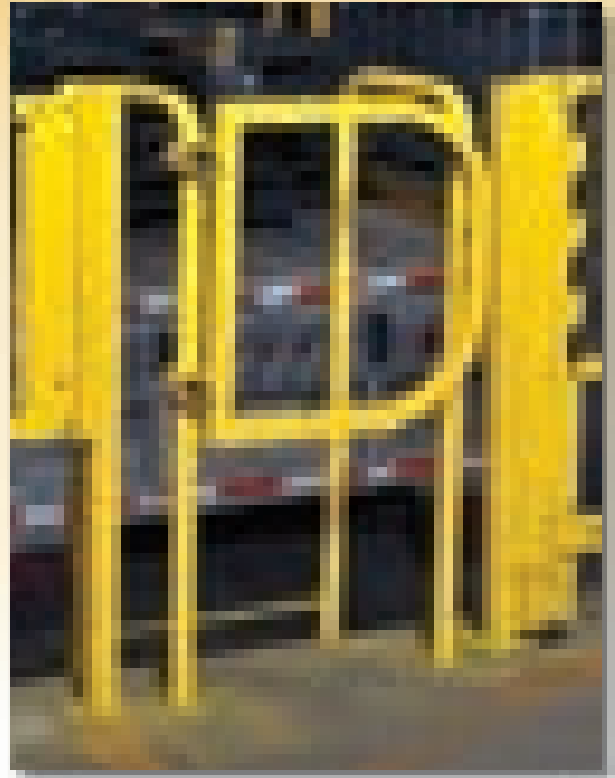
FEATURES AND BENEFITS:

Wildeck's self-closing Laddergard™ Safety Swing Gates are adjustable to fit openings from 16" to 40" and comply with OSHA 1910.23 safety requirements.

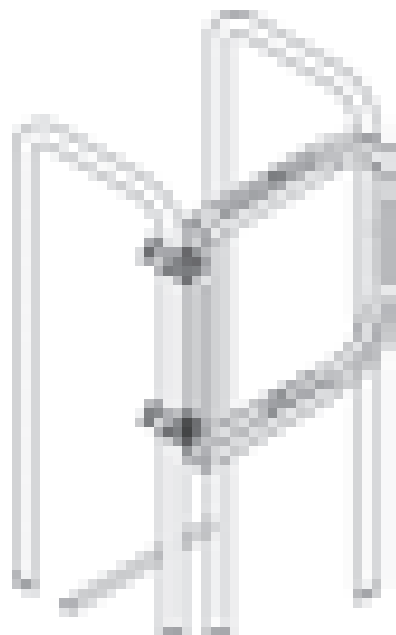
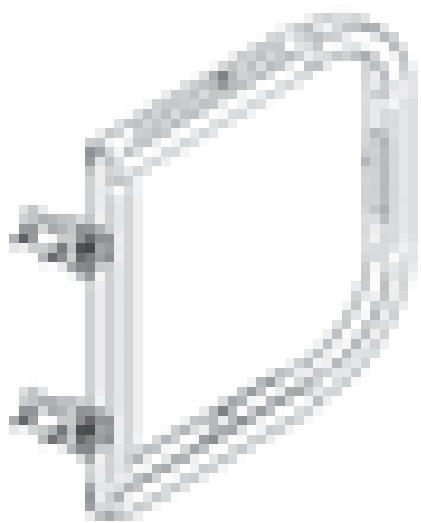
Laddergard™ gates are easy to install and have been designed for maximum durability and reliability. They are painted safety yellow for high visibility and feature a tough polyurethane finish that can withstand harsh industrial environments. All installation hardware and mounting instructions are included.

SPECIFICATIONS:

- ▶ Self-closing spring loaded hinges
- ▶ Reversible – left or right
- ▶ Easily installs to pipe rails up to 2" diameter
- ▶ Mounting hardware included
- ▶ Safety yellow paint finish
- ▶ Two available sizes to cover a wide range of openings:
 - ✓ WGLG-1626 adjustable from 16" to 26"
 - ✓ WGLG-2740 adjustable from 27" to 40"



Assembled Gate



ELEVATE
YOUR
STANDARDS®



ELEVATE YOUR STANDARDS

GUARDING

MACHINE GUARDS

For Machine Impact Protection

Safeguard expensive machinery and employees from lift truck impacts with high visible machine guards. Built to last, these safety guards are made from tubular steel.

Assembled as a complete "U" shaped unit, Wildeck machine guards can be bolted to the surface or secured in concrete for maximum safety.

- ▶ Solid, Quality Construction
- ▶ Easy, Fast Installation
- ▶ Functional, Reliable Design
- ▶ Painted Safety Yellow

Specifications:

Steel Tube - 5" x 5" x 3/16"

Base Plate - 9" x 9" x 3/8"

Heights - 10", 24" and 42"



Stock	Description
WG-1036	10" Height by 36" Width
WG-1048	10" Height by 48" Width
WG-2436	24" Height by 36" Width
WG-2448	24" Height by 48" Width
WG-4236	42" Height by 36" Width
WG-4248	42" Height by 48" Width

STORING | LIFTING | GUARDING

Wildeck, Inc. • P.O. Box 89 • 405 Commerce Street • Waukesha, WI 53186
262-549-4000 • 800-325-6939 • FAX 262-549-3466 • info@wildeck.com
www.wildeck.com

WILGARD® MT SERIES GUARD RAIL GATE

Wilgard® MT Series Guard Rail can now be configured with a swing gate that allows for forklifts and personnel to quickly access work areas. All guard rail and gate components include necessary hardware and anchors.

Highlights

- Create entry/exit points along Wilgard MT Guard Rail Systems
- Available in any Wilgard MT rail length
- Prevents workers' compensation claims
- Directs pedestrian and forklift traffic flow



48-Hour quickship available for standard sizes!

HOW IT WORKS

Wilgard MT series' guard rail gate ships to your location with all necessary hardware required for installation.

For use in a new guard rail system, specify the size of gate opening needed so that correct gate rail lengths can be provided (custom gate rail lengths available). The Wilgard MT series gate can also be integrated into existing Wilgard MT series guard rail systems.

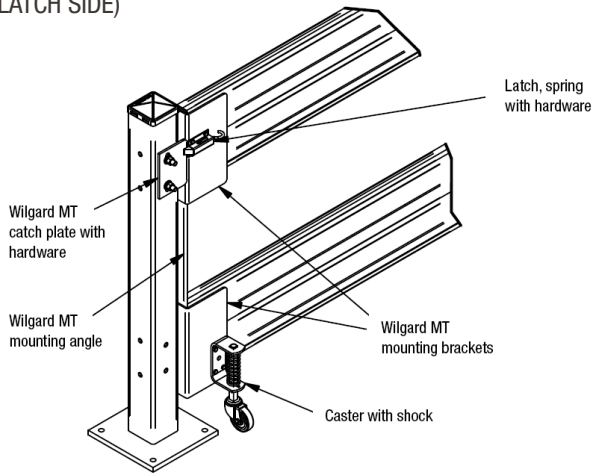
Once installed, the gate rolls along a spring-loaded caster for smooth operation and locks in place when not in use. It provides a visible barrier that matches the appearance of Wilgard MT guard rail systems.



WILGARD® MT SERIES GUARD RAIL GATE

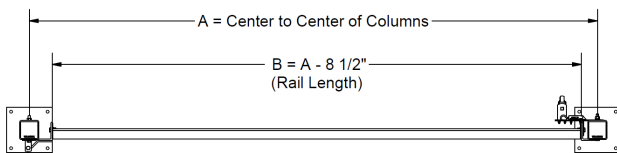
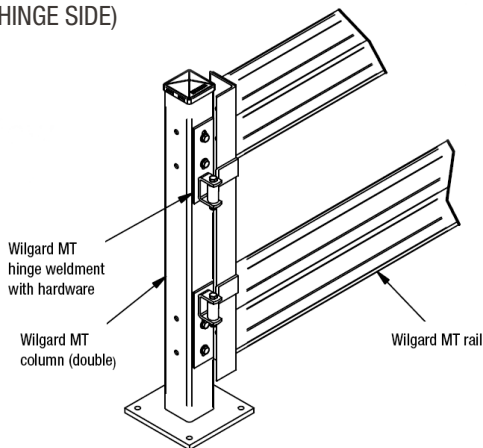
REAR VIEW

(LATCH SIDE)



FRONT VIEW

(HINGE SIDE)



SPECIFICATIONS

- Columns: 4" x 4" x 3/16" structural tube; 18" H single rail; 44" H double rail; and 44" H triple Rail
- Base Plates: 10" x 10" x 5/8" plate steel
- Anchors: 1/2" x 5" wedge bolts (included)
- Post Cap: Zinc plated snap-on steel cap
- Rails: Corrugated 12 gauge steel guard rails, 12" H with hemmed / rolled edges
- Lengths: 2 ft. – 10 ft. in one foot increments
- Rail Hardware Pack: (4) 1/2" x 5-1/2" thru bolts, nuts, and flat washers
- Column Hardware Pack: (4) 1/2" x 5" wedge bolts, yellow plastic plugs for unused holes, and zinc plated snap-on steel cap
- Caster with Shock: 125 lb., 3" dia. x 13/16" wide wheel
- Spring-loaded latch keeps gate closed when not in use
- All hardware included with gate kit components

Gate Components	Part #	Notes
Wilgard MT Gate Kit	WMSG	Requires (2) rails and (2) columns

Wilgard MT Column	Part #	Height	Weight (with hardware)
Double Rail Column	WCM44	44"	52 lbs.

Wilgard MT Rail	Part #	Rail Lengths	Weight (with hardware)
10' Guard Rail	WM10	116"	67 lbs.
9' Guard Rail	WM9	104"	61 lbs.
8' Guard Rail	WM8	92"	55 lbs.
7' Guard Rail	WM7	80"	49 lbs.
6' Guard Rail	WM6	68"	43 lbs.
5' Guard Rail	WM5	56"	37 lbs.
4' Guard Rail	WM4	44"	31 lbs.
3' Guard Rail	WM3	32"	25 lbs.
2' Guard Rail	WM2	20"	18 lbs.

w.w.Cannon, Inc.

Design. Layout. Build. Install.

1-800-442-3061

www.wwcannon.com



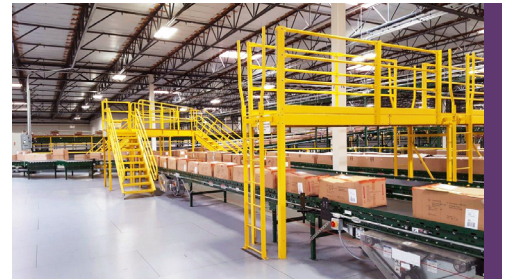
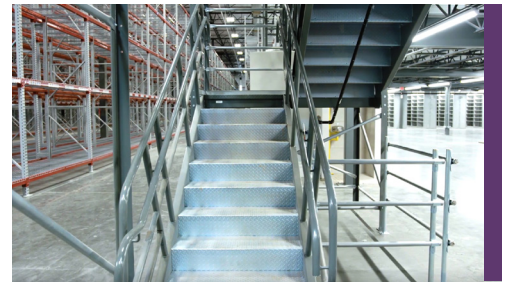
GUARDS
MEZZANINES
LIFTS
ACCESS

PICK MODULE ACCESSORIES

A well-designed and equipped pick module can improve productivity, material flow, efficiency, and safety in your fulfillment center. Wildeck creates durable products that can withstand the fast pace and heavy use of the distribution center environment. We strive to help you with maximizing your cube and space utilization through standard and custom solutions. Typical applications for Wildeck products include: pallet flow, case flow, pallet rack, conveyor crossovers, catwalks, AS/RS and custom projects.

Highlights

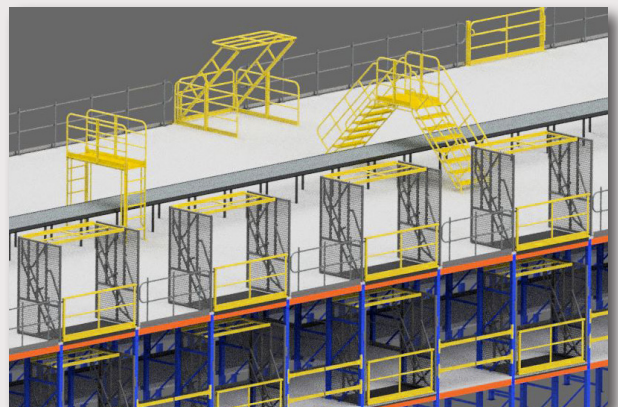
- Improve access and mobility around material handling/automated systems
- Add entries/exits for egress, maintenance, or personnel access on multi-level pick modules/rack systems
- Transform pallet bay areas on multi-level pick modules into protected, gated systems



ENGINEERING SERVICES

We know that one size doesn't always fit all. That is why we listen to you, the customer, to design products that work within the parameters of your space and application. We will work directly with your project files and "drop-in" the products you need, to provide accurate drawings quickly. Engineering services include:

- CAD Design and layout in PDF and .dwg
- Custom designs
- Code compliance
- Installation support



PICK MODULE ACCESSORIES



Stair / Tower Systems

IBC (egress) and OSHA (maintenance) stairways mount to Wildeck towers, platforms, or your rack beams.



Pallet Drop Zone Gate

Safety gate that maximizes the cube and utilizes multiple pivot points to accommodate taller, wider, and deeper pallet loads — while minimizing footprint occupied on the deck surface. Available in freestanding or rack mounted configurations.



Conveyor Crossovers

IBC (egress) and OSHA (maintenance) crossover units to provide access to and around machinery and equipment.



JiffyRail™ and Gates

Top, side, and rack-mounted configurations available, with no on-site welding required. Toe board and flashing provided for “B” deck, “N” deck, or bar grating.

IMPROVE YOUR PICK MODULE'S

USABILITY

SAFETY

EFFICIENCY

...AND ACCESS FOR PERSONNEL



Custom Platforms

Custom platform configurations available to best meet your space, safety, and application requirements.



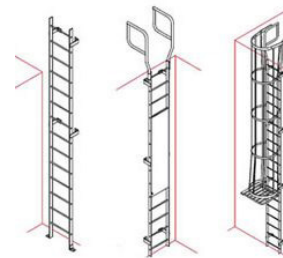
Pick Module Safety Gates

A variety of safety gate designs to best meet the requirements of your rack bay or elevated surface (*pick module tilt gate displayed above*).



Impact Gates

Commonly used in pallet flow areas; freestanding and rack mounted options available; choose between 4-panel (*displayed above*), 2-panel, and finger gate variations.



Access Ladders

Available with fall arrest systems to meet current OSHA codes.



GUARDS
MEZZANINES
LIFTS
ACCESS

WILGARD® XT SERIES GUARD RAIL GATE

Wilgard® XT-series Guard Rail can now be configured with its own gate components, offering one of the most versatile gate systems available for Wilgard XT rail. All guard rail and gate components include necessary hardware and anchors.

Highlights

- Create entry/exit points along Wilgard XT Guard Rail Systems
- Available in any Wilgard XT rail length
- Prevents workers' compensation claims
- Directs pedestrian and forklift traffic flow



48-Hour quickship available for standard sizes!

HOW IT WORKS

Wilgard XT series' guard rail gate ships to your location with all necessary hardware required for installation.

For use in a new guard rail system, specify the size of gate opening needed so that correct gate rail lengths can be provided (custom gate rail lengths available). The Wilgard XT series gate can also be integrated into existing Wilgard XT series guard rail systems.

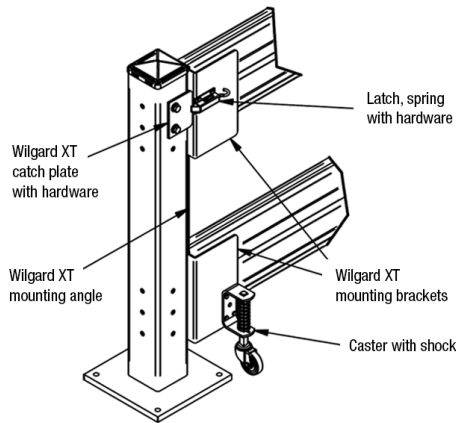
Once installed, the gate rolls along a spring-loaded caster for smooth operation and locks in place when not in use.



WILGARD® XT SERIES GUARD RAIL GATE

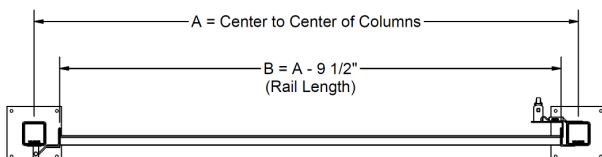
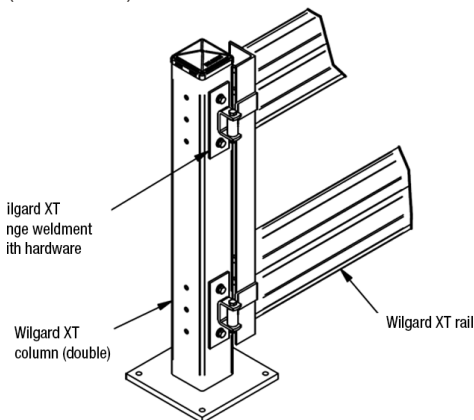
REAR VIEW

(LATCH SIDE)



FRONT VIEW

(HINGE SIDE)



SPECIFICATIONS

- Columns: 5" x 5" x 3/16" structural tube; 18" H Single Rail; 44" H Double Rail; and 44" H Triple Rail
- Base Plates: 12" x 12" x 3/4" plate steel
- Anchors: 1/2" x 5" Wedge Bolts (included)
- Post Cap: Zinc plated snap-on steel cap
- Rails: Corrugated 11 gauge steel guard rails, 12" H with hemmed / rolled edges
- Lengths: 2 ft. – 10 ft. in one foot increments
- Rail Hardware Pack: (6) 1/2" x 1-1/2" thru bolts, nuts, and flat washers
- Column Hardware Pack: (4) 1/2" x 5" wedge bolts, yellow plastic plugs for unused holes, and zinc plated snap-on column cap
- Caster with Shock: 125 lb., 3" Dia. x 13/16" wide wheel
- Spring-loaded latch keeps gate closed when not in use
- All hardware included with gate kit components

Gate Components	Part #	Notes
Wilgard XT Gate Kit	WXSG	Requires (2) rails and (2) columns

Wilgard XT Column	Part #	Height	Weight (with hardware)
Double Rail Column	WC44	44"	75 lbs.

Wilgard MT Rail	Part #	Rail Lengths	Weight (with hardware)
10' Guard Rail	WG10	115"	71 lbs.
9' Guard Rail	WG9	103"	65 lbs.
8' Guard Rail	WG8	91"	58 lbs.
7' Guard Rail	WG7	79"	52 lbs.
6' Guard Rail	WG6	67"	45 lbs.
5' Guard Rail	WG5	55"	39 lbs.
4' Guard Rail	WG4	43"	32 lbs.
3' Guard Rail	WG3	31"	26 lbs.
2' Guard Rail	WG2	19"	19 lbs.

w.w.Cannon, Inc.

Design. Layout. Build. Install.

1-800-442-3061

www.wwcannon.com



GUARDS
MEZZANINES
LIFTS
ACCESS