

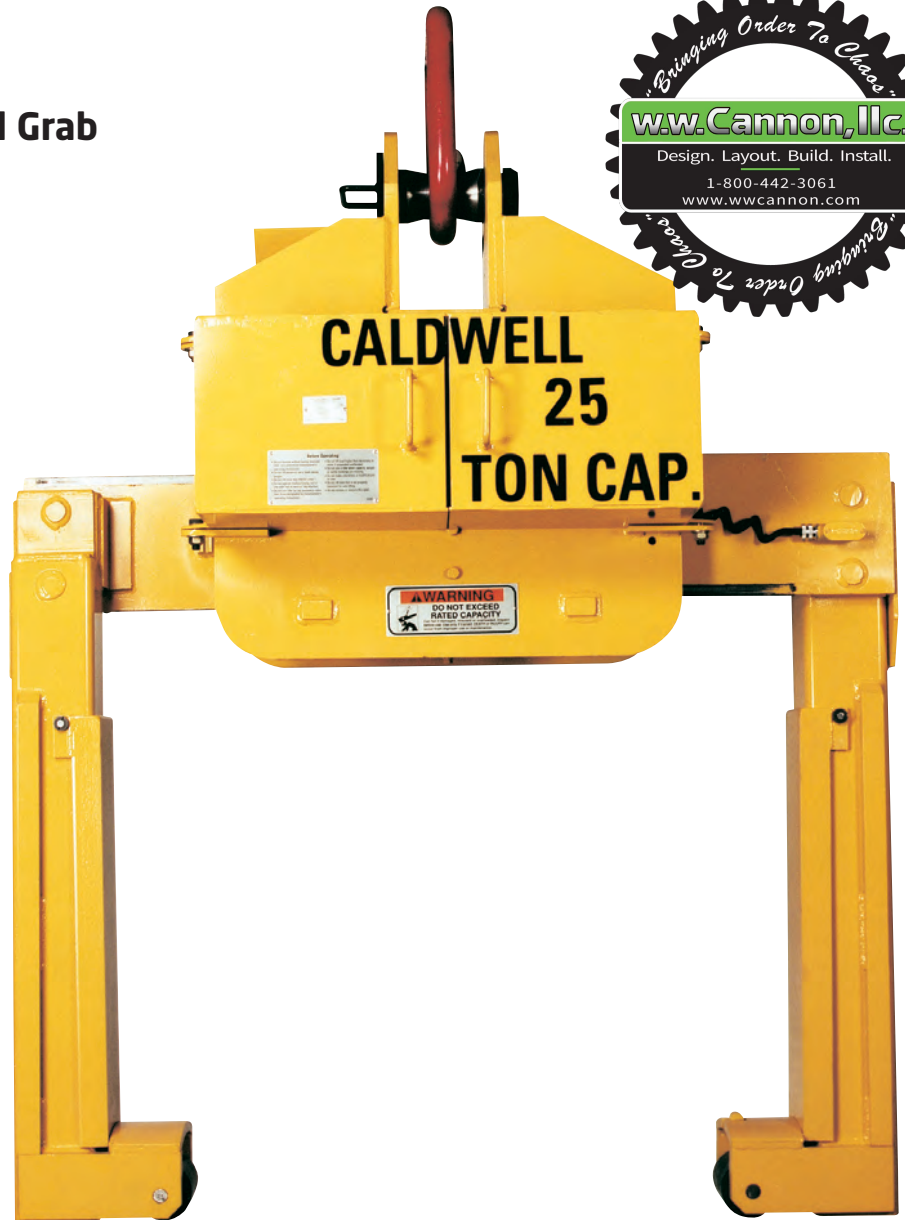
Model 85

Fixed-Bail Telescoping Coil Grab

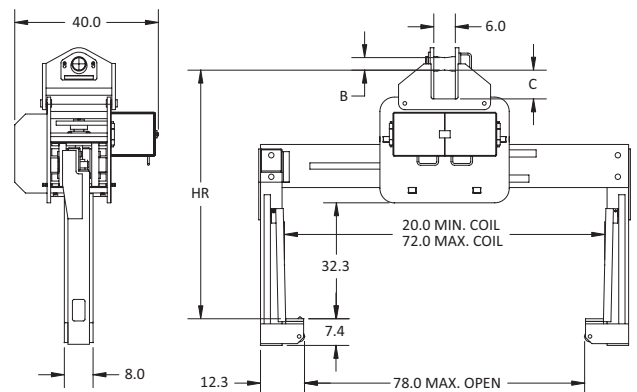
If there was a Caldwell Lifting Solutions Hall of Fame, the Model 85 Coil Lifter could claim "Legend" status. The rugged and efficient stock units sold here are ready to handle up to 33 tons, but that's just the beginning. The Model 85 is also one of our most customized lifters. Higher capacities, rotation, load scales, indicator lights, padding, toe rollers, and more are available. See the following pages for details.

Product Features:

- Motorized leg drive maximizes the efficient handling of coils
- Leg drive speed - 2.8" per second
- Narrow aisle stacking maximizes coil storage floor space
- Curved lifting pads for coil protection
- High-impact plastic toe rollers prevent lifter foot contact
- Anti-clamp limit switch protects coil during closing of lifter
- Heavy-duty torque limiting drive protection during maximum open/closed conditions
- Lockout limit switch prevents inadvertent leg opening during lift
- Alloy steel pin bail
- Easily replaceable slide wear guides
- Design allows for easy maintenance access to drive components
- Designed to operate on AC power supply
- Field upgradeable to rotating style
- Complies with ASME standards



MODEL85



Outside width at 20" minimum coil dimension is 79-1/2".
NOTE: Dimensions shown in inches.

Model Number	Capacity (tons)	Dimensions (inches)				Pin/Bail		Weight (lbs.)
		Coil Width		HR Headroom	Throat	B	C	
		Min.	Max.					
85-15-72	15	20	72	67-1/2	32.3	3	8-1/4	3440
85-20-72	20	20	72	67-1/2	32.3	3	8-1/4	3540
85-25-72	25	20	72	69-1/4	32.3	3-1/2	8	3780
85-33-72	33	20	72	69-1/4	32.3	3-1/2	8	3880

Other sizes available, consult factory.

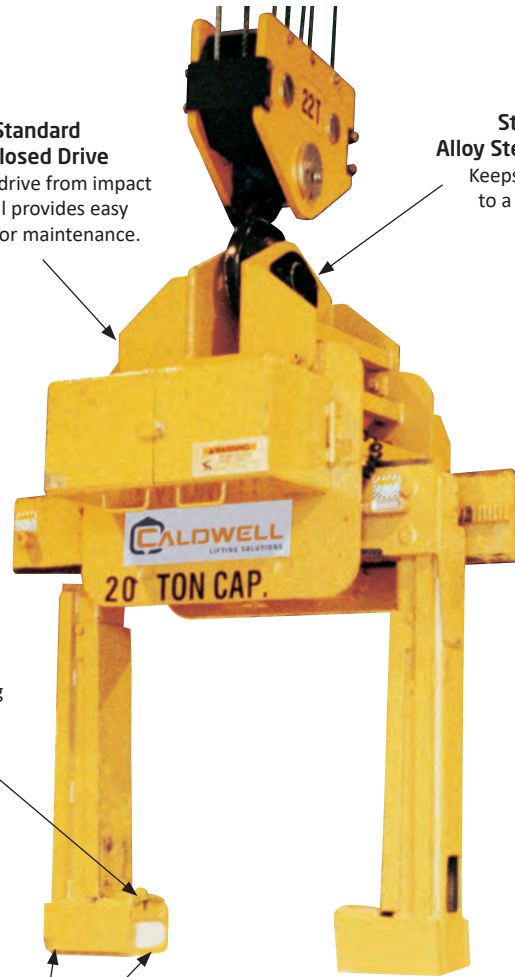
Customize Your Model 85 With:



Optional Motorized Bail Rotation
Allows for independent and precise positioning of the load or the lifter.

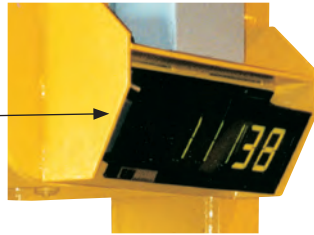
Standard Enclosed Drive
Protects drive from impact yet still provides easy access for maintenance.

Standard Alloy Steel Lifting Pin
Keeps headroom to a minimum.

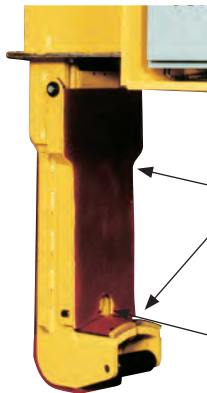


Standard Lockout Limit Switch
Prevents inadvertent leg opening during lift.

Optional Built-In Load Scale
With digital readouts for precise coil weight.



Standard Anti Clamp & Toe Rollers
Protects sides of coil from lifter damage.



Optional Urethane Padding
Urethane coil edge protection attached to legs, feet, or both.

Optional I.D. Photo-Electric Sensor
Photo-electric sensor indicates lifter foot alignment with coil I.D.

Optional Lift Beam
Perform other lifts without the need to remove the grab from the crane hook.



ADDITIONAL OPTIONS

Optional Parking & Maintenance Stands
Provides storage for lifter when not in use and easy access for normal inspection & maintenance. See page 67.

Optional Severe-Duty Drive Package
For high-cycle operations.

Optional Indicator Lights
Visual indicator for various functions.

Optional Controls
Can include starter with overload, VFD (variable frequency drive) NEMA-12 enclosure and pigtail.