

Model 18

Fixed Twin Basket Sling Lifting Beam

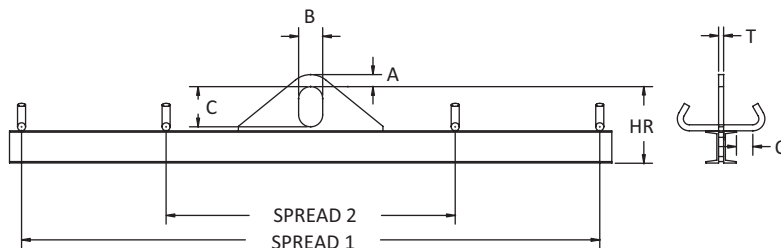


The Fixed Twin Basket Sling Lifting Beam should perhaps be called El Toro for its resemblance to a longhorn bull! Just as tough and ready to roll, this unique beam comes standard with two sets of bent bar hooks on all units with a spread of 6'L or greater, if you need a different configuration, let us know – it's customizable.

Product Features:

- Designed to be used with slings in a basket hitch
- Provides greatest clearance in low-headroom applications
- Two sets of bent bar hooks are standard on units with a spread of 6' and greater
- Spread 2 is 1/2 of spread 1
- Hooks are designed to handle up to a 2" sling eye width
- Complies with ASME standards

MODEL 18



Capacity (tons)	Model Number HR Headroom (in.) Weight (lbs.)	Spread (feet)						Other Dimensions (in.)	
		3*	4*	6	8	10	12	A=7/8 B=3 C=5	T=3/4 O=2
1/2	Model Number	18-1/2-3	18-1/2-4	18-1/2-6	18-1/2-8	18-1/2-10	18-1/2-12	A=7/8 B=3 C=5	T=3/4 O=2
	HR Headroom	8-1/2	8-1/2	8-1/2	8-1/2	8-1/2	9-1/2		
1	Model Number	18-1-3	18-1-4	18-1-6	18-1-8	18-1-10	18-1-12	A=7/8 B=3 C=5	T=3/4 O=2
	HR Headroom	8-1/2	8-1/2	9-1/2	10-1/2	10-1/2	11-1/2		
2	Model Number	18-2-3	18-2-4	18-2-6	18-2-8	18-2-10	18-2-12	A=7/8 B=3 C=5	T=3/4 O=2
	HR Headroom	9-1/2	10-1/2	10-1/2	11-1/2	12-1/2	13-1/2		
5	Model Number	18-5-3	18-5-4	18-5-6	18-5-8	18-5-10	18-5-12	A=2 B=4 C=7	T=1-1/4 O=2
	HR Headroom	13-1/2	14-1/2	15-1/2	16-1/2	17-1/2	19-1/2		
7 1/2	Model Number	18-7 1/2-3	18-7 1/2-4	18-7 1/2-6	18-7 1/2-8			A=2 B=4 C=7	T=1-1/4 O=2
	HR Headroom	12	14	15	17				
	Weight	125	185	315	475				

* 3' and 4' beams are provided with one set of bent bar hooks.

Customize Your Model 18

Need to add more bent bar hooks? No problem. Call 800.628.4263 and speak to one of our Customer Service Reps to discuss your exact requirements.



PRODUCT OPERATION

