



Model 60M

Motorized Heavy-Duty Sheet Lifters

This standard 20-ton capacity lifter is just the beginning. Choose the voltage, leg length, grab shoe length, greater capacity, and more for a fully customized unit.

Product Features:

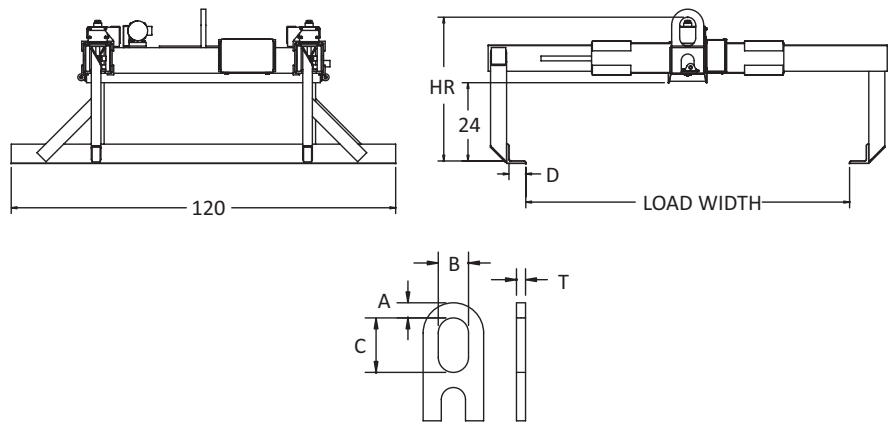
- Motorized leg adjustment, 460 volt
- Versatile handling of bundles, sheets, plates, and other materials stacked horizontally
- Low-headroom design for optimum lifting capabilities
- One-person operation minimizes handling cost
- Self-locking worm gear drive for leg adjustment is standard
- Easy adjustment for different sheet widths
- Rack and pinion leg drive
- Designed for ease of maintenance
- Broad adjustment range handles various load widths
- Complies with ASME standards

Product Options:

- Battery-powered motorization
- End chains with plate hooks (recommended for all widths 72" and greater)
- Extended grab shoe lengths
- Longer legs increase load clearance
- Controls shipped mounted or loose
- Other voltages available
- Remote control



MODEL 60M



! WARNING
Do not lift loosely bundled, thin or oily sheets.

Model Number	Capacity (tons)	Bundle Width		HR Headroom	Shoe D	Min. Aisle	Bail Opening				Weight (lbs.)
		Min.	Max.				A	B	C	T	
60M-20-96	20	38	96	45	5.25	15	2.5	5	9	1.5	3150

Other sizes available, consult factory.