

**w.w.Cannon, Inc.**

**Design. Layout. Build. Install.**

1-800-442-3061  
[www.wwcannon.com](http://www.wwcannon.com)

# INTELLI- CONNECT™

DIAGNOSTICS AND ANALYTICS



COLUMBUS MCKINNON CORPORATION

### **Improving Safety, Uptime, and Productivity Through Automation.**

Downtime due to unexpected maintenance or equipment failure is expensive. Intelli-Connect™, a solution from Columbus McKinnon's Automation Division, can help enable predictive maintenance and minimize downtime.

Intelli-Connect diagnostics and analytics enable quick and easy programming, maintenance, monitoring, and troubleshooting of overhead cranes and hoists. Using the Intelli-Connect Mobile App, you can access detailed information right from the plant floor. With diagnostic information available at your fingertips, you can address issues more quickly, plan maintenance, and ultimately reduce downtime.

Intelli-Connect is ideal for all types of overhead crane applications in industries including power generation, automotive, aerospace, metals, pulp and paper, and much more.

DEVELOPED BY



COLUMBUS MCKINNON  
AUTOMATION

Columbus McKinnon and its dedicated Automation Division are working side by side with customers to leverage automation technology to improve their safety, uptime, and productivity. We'll partner with you every step of the way, from project evaluation to aftermarket support, to ensure your application needs are met – every time.

# INTELLI-CONNECT™

## DIAGNOSTICS AND ANALYTICS

### FEATURES & BENEFITS

#### INFORMATION AT YOUR FINGERTIPS

Intelli-Connect's diagnostic and analytic capabilities deliver system status information, whether you're using a smartphone or tablet, to help you manage equipment 24/7. With Intelli-Connect, you can get insight into how your systems operate and how your equipment is utilized to ensure proper and timely maintenance.

#### IMPROVED SAFETY

Using Intelli-Connect, you can monitor and troubleshoot a Magnetek variable frequency drive (VFD) right from the plant floor. Intelli-Connect wirelessly connects to crane equipment located up to 100 feet in the air, allowing you to safely and quickly get an overview of your system's operation. You no longer need to climb up to the VFD, power down, and connect hardware to access VFD status information, thus eliminating potentially hazardous situations.

#### QUICK TROUBLESHOOTING AND RECOVERY

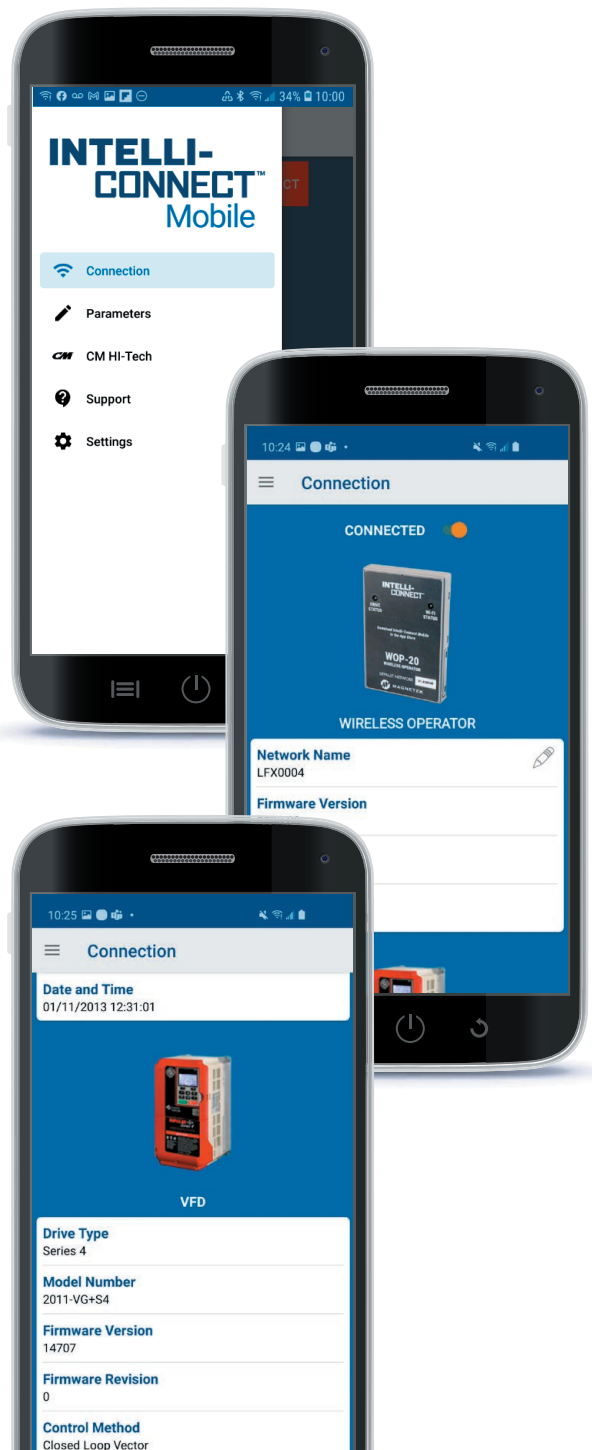
Intelli-Connect's advanced diagnostics provide critical information, such as signal monitors, equipment status, and energy use, to keep your system functioning effectively. By incorporating this technology into your overhead crane or hoist, you can proactively monitor and schedule maintenance to ensure you have the necessary parts and support available when you need it. And, if your system does go down unexpectedly, Intelli-Connect can help reduce your mean time to recover (MTTR). With instant access to user manuals available through the app, operators can easily reference system setup and diagnostics to get equipment back up and running quickly.

#### SECURE CONNECTION

The wireless operator connects the Magnetek VFD and your smartphone or tablet via a secure Wi-Fi connection. Set your own SSID (service set identifier) and password to establish a protected link for data flow.

#### PRODUCT AND PROJECT SUPPORT

Every automated system from Columbus McKinnon is designed, engineered, and built in-house by our expert team of engineers and automation specialists. Our highly trained support team is always available – 24/7, 365 days a year – to assist with technical application issues and tight installation timelines. Plus, with the Intelli-Connect Mobile App, you can easily email our service team right from the app with any product setup or troubleshooting questions.



**EASY PRODUCT INTEGRATION**

Intelli-Connect can be combined with any electric wire rope or chain hoist, including select Columbus McKinnon models, that utilize IMPULSE®-G+/VG+ Series 4 or IMPULSE®-G+ Mini VFDs. New or existing hoists utilizing Magnetek VFDs can be enhanced with Intelli-Connect, giving you added intelligence and information to keep your equipment and operations running. If an existing application already operates with a Magnetek VFD, Intelli-Connect can be installed with a remote mounting kit.

Hoists currently using CM HI-Tech™ (Hoist Interface Technology) can easily integrate with Intelli-Connect, giving you access to even more status and system information. You'll get all the features of CM HI-Tech, such as the ability to quickly and easily adjust hoist speed and performance parameters, without the need for a PC or connector cable. Designed to work together for optimal performance, Columbus McKinnon's products provide complete intelligent solutions for your lifting and positioning applications.

**CHOOSE FROM:**

COLUMBUS MCKINNON HOISTS

CM Lodestar® VS Electric Chain Hoist



Shaw-Box® SK™ and 800 Wire Rope Hoists

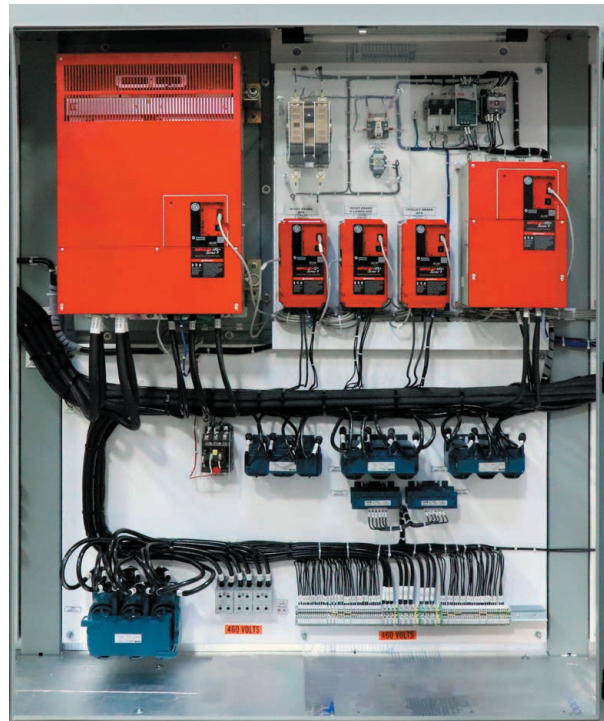


Yale® YK™, Y80, Cable King, and LodeKing LT™ Wire Rope Hoists



MAGNETEK VARIABLE FREQUENCY DRIVES

IMPULSE®-G+/VG+ Series 4 or IMPULSE®-G+ Mini VFDs

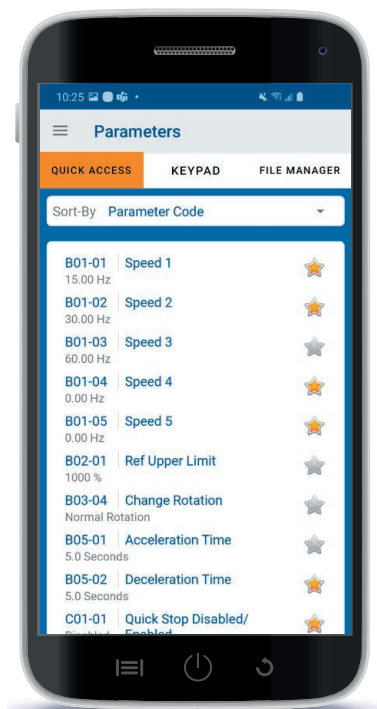
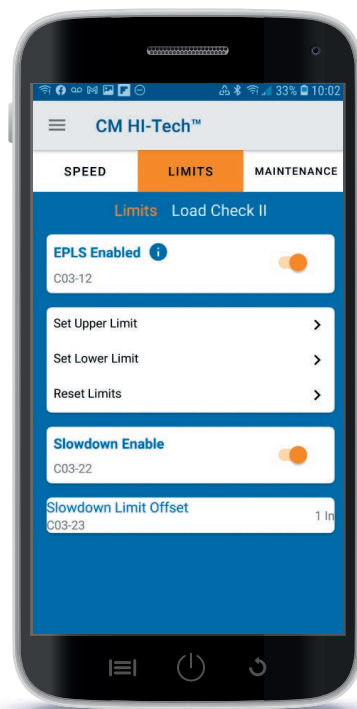
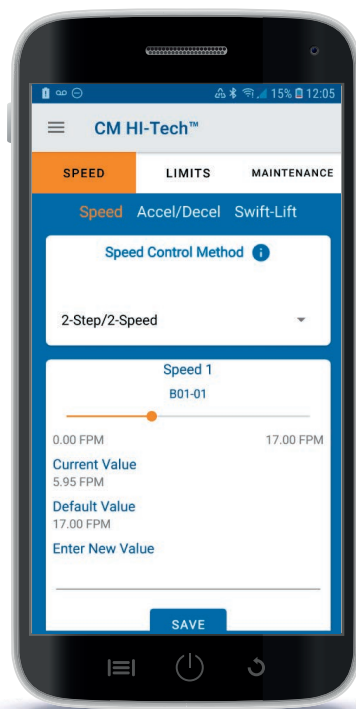


# INTELLI-CONNECT MOBILE

Intelli-Connect Mobile is comprised of a wireless operator module (WOP-20) mounted on the control panel that is connected to a single Magnetek VFD on a hoist or single crane motion via a CAT5 Ethernet cable. The wireless operator creates a wireless network, which is accessible from a personal electronic device (PED), such as a smartphone or tablet. Once linked, Intelli-Connect Mobile enables quick and easy programming, maintenance, monitoring, and troubleshooting of VFDs associated with your hoist or crane motion. The mobile app is available as a free download on Google Play or the Apple® App Store®\*.

## FEATURES

- Easy system setup
- Access to the latest user manuals and troubleshooting guides
- Ability to adjust parameters and store backup sets to the wireless operator or PED
- Quick access to parameters with the ability to set parameter favorites based on frequent use
- Functionality to easily copy a parameter set from one Magnetek VFD and download onto another
- Access to technical support through the app for parameter setup and troubleshooting
- Over-the-air updates for wireless operator
- Detailed event logging of faults and alarms
- Secure Wi-Fi connection to wireless operator installed on VFDs
- Integration with CM HI-Tech for use with CM Lodestar VS hoists



\*Google Play is a trademark of Google LLC. Apple and App Store are registered trademarks of Apple Inc., registered in the U.S. and other countries.

# INTELLI-CONNECT MOBILE+

Intelli-Connect Mobile+ provides you with all the capabilities of Intelli-Connect Mobile, along with advanced diagnostics and analytics, including trending data and event logging as well as the remaining operating life of the hoist. With this additional information, you'll be able to easily coordinate maintenance schedules to keep downtime to a minimum and ultimately save money. Upgrade to Mobile+ functionality for a one-time fee through the Intelli-Connect Mobile App.

## FEATURES

- Continuous monitoring of pre- and post-VFD events and trending data
- Ability to trigger data-logging events
- Visibility to remaining hoist life, which requires a third-party load cell
- Expanded fault and alarm history
- Inspection log to track maintenance notes

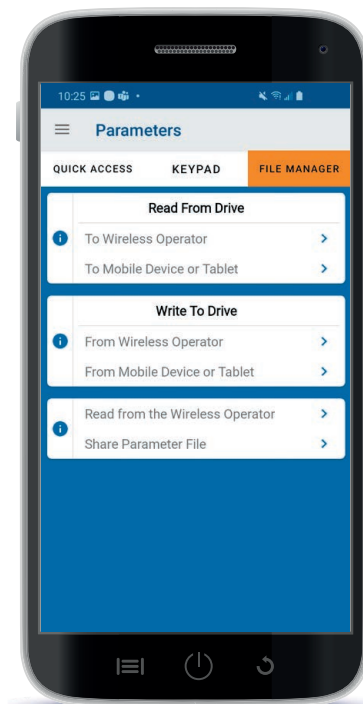
## WHY UPGRADE TO MOBILE+?

With the upgraded Intelli-Connect Mobile+, you can continuously monitor your equipment and track trends over a period of time. It tracks long-term information, providing a comprehensive view of your system by monitoring runs, faults, alarms, and VFD status, including fault codes, motor voltage, current, available hoist operating life, and more. In the event that regulatory or company standards apply to your crane, you can also keep track of inspection notes right in the Mobile+ app.


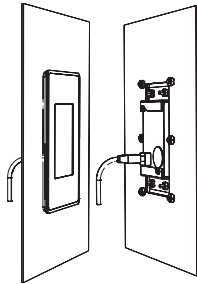
With Intelli-Connect Mobile+, you'll be able to:

- View continuous trending data
- Plan maintenance and inspections
- Predict when to repair or purchase equipment
- Put service teams in place for quick repairs
- Utilize manuals in the app to troubleshoot and recover quickly from faults and alarms

With more VFD information at your fingertips, you'll be able to keep equipment operating safely and efficiently to ensure the highest levels of productivity in your facility.



FEATURES	Intelli-Connect Mobile	Intelli-Connect Mobile +
One-to-One Connection from App to IMPULSE G+/VG+ Series 4 and G+ Mini VFDs	●	●
CM HI-Tech PC Interface	●	●
Monitoring of VFD Current, Torque, Digital I/Os, etc.	●	●
Fault Reset	●	●
Read and Write Subset of Parameters (Quick Access)	●	●
Operator Emulator Mode (LCD and Buttons)	●	●
Upload and Download VFD Parameter Files	●	●
IMPULSE®-Link 5 Compatible Files	●	●
Device Documentation Access (Manuals, Help Screens, etc.)	●	●
Secure Wi-Fi Connection: SSID Name and Password	●	●
Trending Logs and Run/Fault/Alarm Logs		●
Hoist Service Life (Requires a Load Cell)		●
Maintenance and Inspection Log		●
Monitor and Trend Subsets		●
Event Log with Trigger and Time/Date Stamp		●

CATALOG NUMBER	Description	
WOP-20	Wireless Operator	
S4-RMT-OPER-KIT	Panel Mounting Kit* <ul style="list-style-type: none"> <li>• NEMA 4X/IP66</li> <li>• Mounting Bracket</li> <li>• CAT5 Ethernet Cables</li> </ul>	
WOP-20 KIT	Includes Wireless Operator and Panel Mounting Kit	

\* Mounting the wireless operator on the control panel door is recommended for the best wireless signal strength.



**CMC**  
COLUMBUS McKINNON  
PARTNERS IN MOTION CONTROL

