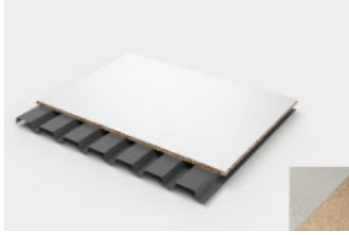


Wildeck Mezzanine Flooring Options



Roof Deck & Resin Board

Description

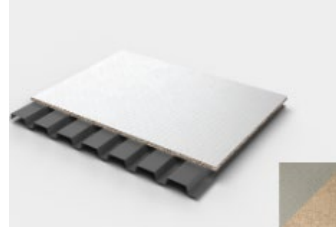
20 gauge painted steel roof deck with 3/4" resin board. The roof deck is painted medium gray on top and white on the underside to reflect light and brighten the area under the mezzanine. The resin board is available with electrostatic dissipative finish (ESD).



Roof Deck & Unfinished Resin Board

Description

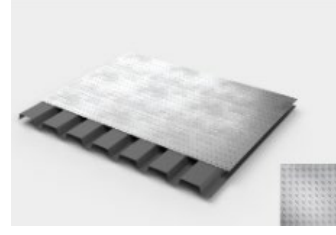
20 gauge painted steel roof deck with specialty wood (straight edge or tongue & groove). The roof deck is painted medium gray on top and white on the underside to reflect light and brighten the area under the mezzanine.



Roof Deck & Specialty Panels

Description

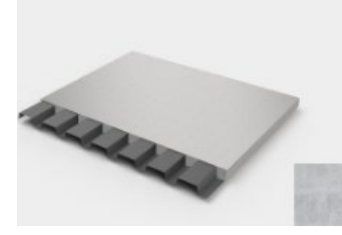
20 gauge painted steel roof deck with resin board coated in laminate finish. Laminate finish is available in different thicknesses and textures. The roof deck is painted medium gray on top and white on the underside to reflect light and brighten the area under the mezzanine.



Roof Deck & Floor Plate

Description

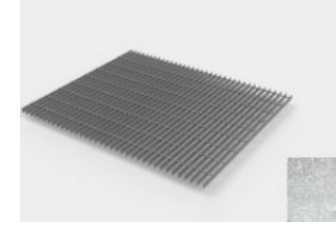
20 gauge painted steel roof deck with 12-gauge galvanized floor plate. (Painted or unpainted steel floor plate over roof deck is also available). The roof deck is painted medium gray on top and white on the underside to reflect light and brighten the area under the mezzanine.



Roof Deck & Concrete

Description

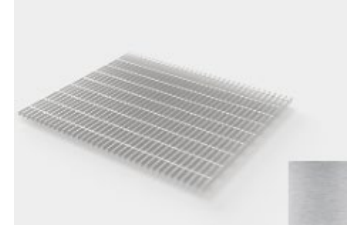
20 gauge painted steel roof deck with lightweight concrete (concrete is not supplied by Wildeck). The roof deck is painted medium gray on top and white on the underside to reflect light and brighten the area under the mezzanine.



Bar Grating

Description

1" x 1/8" painted steel bar grating (NAAMM). Bar grating in other sizes and material are also available.



Stainless Bar Grating

Description

1" x 1/8" stainless steel bar grating

