



MORSE

The Specialist In Drum Handling Equipment



morsedrum.com



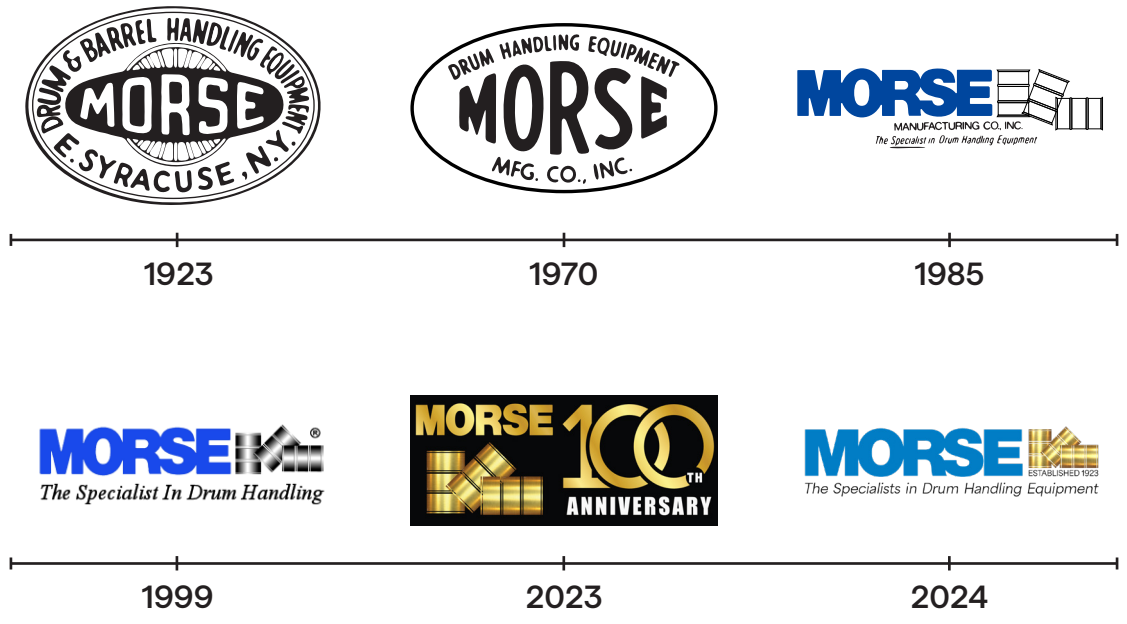


FOUNDED IN 1923

Founded in 1923, Morse has built a reputation for quality, safety, and reliability, with a relentless commitment to delivering solutions that maximize efficiency and safety in material handling. As a pioneer in the industry, Morse's dedication to customer satisfaction and continuous improvement has driven our growth from a small family business in Central New York to a global presence.

Today, as we begin the next century of excellence, Morse is embracing the future with a refreshed identity. Our recent rebranding, which includes a new logo, reflects our focus on innovation while honoring our rich heritage.

You'll see our new logo throughout this catalog, and beyond, representing a *renewed energy and a continued promise to deliver the highest standards in drum handling solutions.*



MORSE

DRUMROLLERS



4

DRUMTUMBLERS



5

POWER-PROPELLED HANDLERS



6

VERTICAL-LIFT POURERS



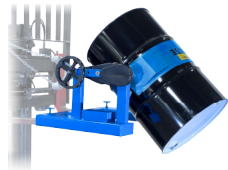
7

HYDRA-LIFT KARRIERS



8

FORKLIFT DRUM HANDLERS



9

BELOW HOOK DRUM HANDLERS



10

DRUMRACKERS



11

DRUMPALLETIZERS



12

DRUM TRUCKS, DOLLIES & CRADLES



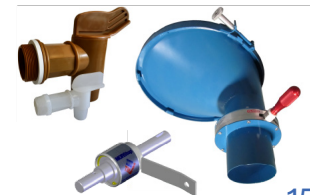
13

5 GALLON PAIL HANDLERS



14

ACCESSORIES, OPTIONS & KITS



15



DRUM ROLLERS

*Morse Drum Rollers gently mix the contents of a closed drum.
Roll drum on its side in horizontal position.*

Industrial drums have inconsistencies in sidewall thickness which can lead to inconveniences for your business.

- Gentle drum mixing for various applications
- Mix contents of 5-55 gallon (19-210L) steel drum
- Fixed or variable speed options
- Single or double drum models available (5154 Series)



**OSHA, CSA and EU REQUIRE ALL Drum Rotators be in Enclosure with Safety Interlock.*



456 Series Hydra-Lift Drum Rollers

Easy Floor-Level Loading
Hydraulic Power Tilt
Variable drum RPM
Capacity: 1000 Lb. (454 kg) liquid load
400 Lb. (182 kg) dry load



201 Series Portable Drum Rollers

Rock-Over Drum Loading
Fixed or variable speed
Capacity: 500 Lb. (227 kg) liquid load
300 Lb. (136 kg) dry load



5154 Series Stationary Drum Rollers

Load horizontal drum with hoist
Fixed or variable speed
Single or double drum models
Capacity: 1000 Lb. (454 kg) liquid load
300 Lb. (136 kg) dry load



DRUM TUMBLERS

Thorough “corner-over-corner” mixing action.

309 Series Pictured



*ALL Drum Rotators REQUIRE Controls to Start / Stop

Combine ingredients or blend sediment and valuable contents back into suspension while mixing inside a closed drum, eliminating contamination, reducing clean-up and risk of worker exposure. Use Morse Drum Mixers to:



- Ensure uniform batches
- Mix the contents of a closed steel, plastic, or fiber drum
- Mix drum of powder, paint, oils, urethane resin, plastisol, glue, dyes, flavors, etc.
- Grind and smooth parts in media
- Capacity: 800 Lb. (363 kg) full drum
400 Lb. (182 kg) half-full drum

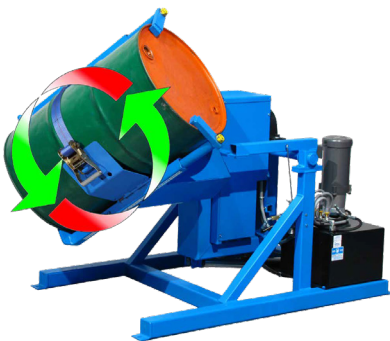
309 Series Drum Tumblers



Load upright drum with hoist
Secure drum with web strap and two top clamps
Fixed or variable speed
Single or double drum models available



310 Series Tilt-To-Load Drum Tumblers



Easy Floor-Level Loading
Hydraulic Power Lift
Variable drum RPM



311 Series Complete Tilt-To-Load Drum Tumblers



Includes Drum Tumbler, Automated Controls and Enclosure with Interlock
Automated Controls lift drum, rotate for time set, then return drum to upright at floor-level for easy unloading

*Control Packages & Guard Enclosures sold separately



POWER-PROPELLED HANDLERS

Self-Propelled Drum Handlers For Safe And Efficient Drum Handling

Morse <PILOT> Power-Propelled Drum Handlers feature intuitive, industry-standard throttle, steering and drum positioning controls.

- Raise drum up to 10.5 feet (3.2 m) high
- Adjustable leg straddle from 42" to 50" (106.7 to 127 cm)
- Built-in Safety Systems:
 - Automatic brake activates when handle is released
 - "Belly-button" switch prevents operator from being pinned



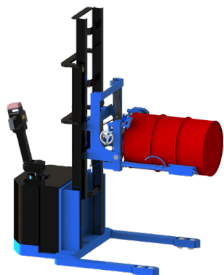
Model 900 Drum Pourer

Lift, transport and dispense a drum
Fully invert your drum in just 8 seconds
Familiar ergonomic controls
Capacity is 1500 Lb. (680 kg)



Model 905 Scale-Equipped Drum Pourer

Adds the ability to weigh while you pour
Dispense just the amount you need
Capacity is 800 Lb. (363 kg)



Model 910 MORSTAK Drum Racker

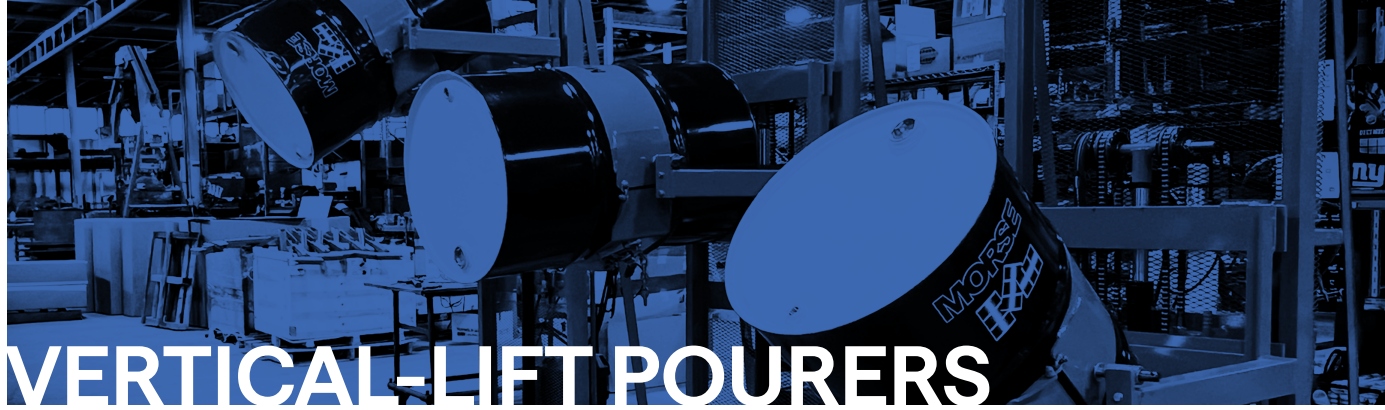
Rack drum in horizontal position up to 10.5' (3.2 m) high
Rack a 55-Gallon (210 liter) steel or plastic drum with suitable top rim
Move drums on and off racks, pallets, trucks, etc.
Lift an upright drum and place in horizontal position
Position drums in rack with virtually zero clearance in between



Model 915 MOR SPEED Drum Stacker

Lift, Transport & Stack a RIMMED drum
Jaws grip drum top rim
Position upright drum in rack with virtually zero clearance
Capacity is 1500 Lb. (681 kg)





VERTICAL-LIFT POURERS

Lift, Weigh, And Pour Drums With Precision And Safety

Morse Vertical-Lift Drum Pourers offer versatile options for controlled dispensing, accurate weighing, and enhanced maneuverability at heights up to 106" (2.7 m).

- 60" or 106" (152 or 269 cm) pour
- Controlled pouring with 360° drum rotation
- Scale-equipped models for accurate batching
- Stable drum support to reduce spills and injuries
- Capacity: 800 Lb. (363 kg) full drum
500 Lb. (227 kg) half-full drum

MORCINCH
*It's a CINCH to handle almost any drum, with
 the MORCINCH Drum Handling System!*



510 and 520 Series Vertical-Lift Drum Pourers

Lifts drum straight up
Compact base and turning radius
Rotate 360°



515 and 525 Series Scale-Equipped Vertical-Lift Drum Pourers

Weigh drum while pouring
Dispense amount needed
No need for separate scale



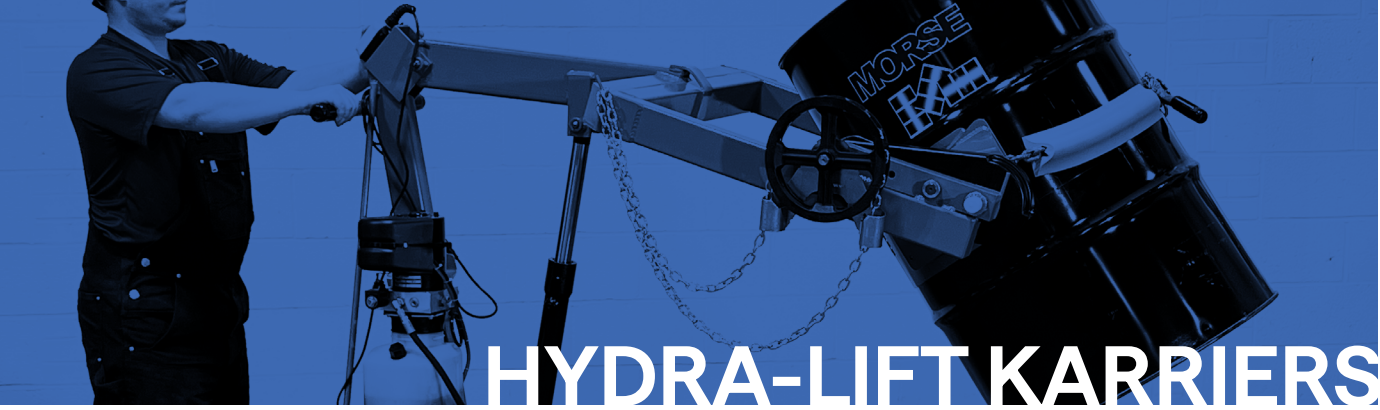
80 Series Mobile-Karriers

Lower handle to raise drum
Grasp drum to tilt by hand
800 Lb. (363 kg) capacity

Stainless Steel Vertical-Lift Drum Pourers

Type 304 Stainless Steel Construction
Stainless Steel Drum Pourers are ideal for many food, pharmaceutical and chemical drum handling applications
Stainless steel drum handlers provide the corrosion resistance, durability, and wash down capability these industries require





HYDRA-LIFT KARRIERS

Hydraulic Drum Dumpers On Wheels To Lift, Move, And Pour

Morse Hydra-Lift Drum Karriers provide controlled drum dispensing, reducing risks of injury and damage while improving efficiency in your drum handling operations.

- Controlled dispensing to minimize spills
- Fully supports drum weight for stability
- 360° drum rotation in either direction
- Handles drum with faucets or cones
- Available in stainless steel or with spark-resistant parts



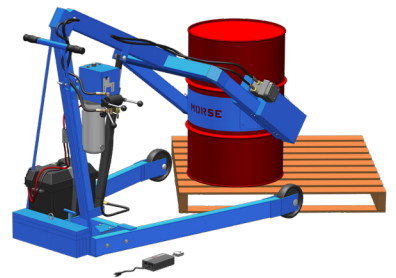
400A Series Hydra-Lift Karriers

72" or 96" (183 or 244 cm) pour
Capacity: 800 Lb. (363 kg) full drum
500 Lb. (227 kg) half-full drum



400S-XR Series Extended Reach

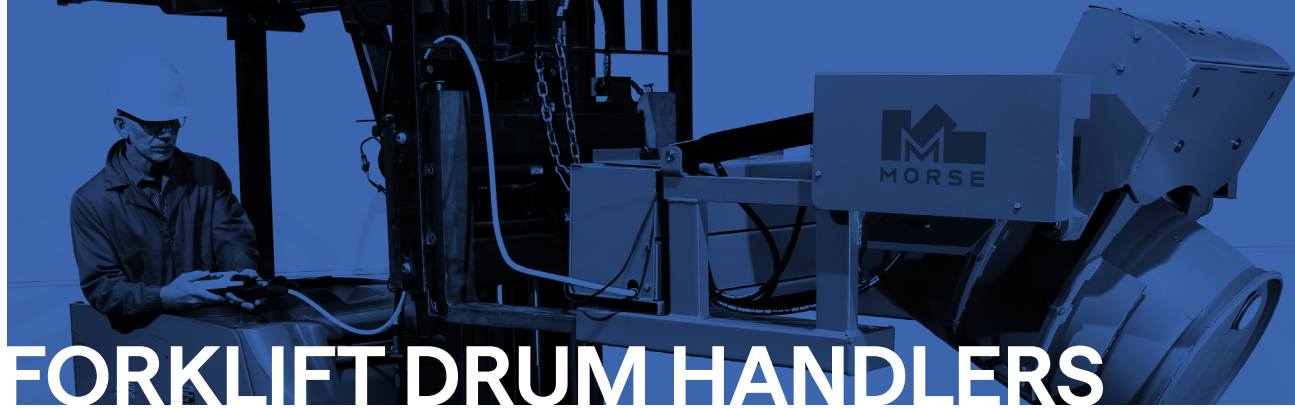
Access drum on pallet
Pour 20" (50.8 cm) beyond wheels at 71" (180 cm) high
Capacity: 600 Lb. (272 kg) full drum
300 Lb. (136 kg) half-full drum



410 Series Heavy-Duty Hydra-Lift Karriers

72" (183 cm) pour
More stable: Twin boom, 2 cylinders
Narrow footprint, parallel legs
Capacity: 1200 Lb. (544 kg) full drum
600 Lb. (272 kg) half-full drum



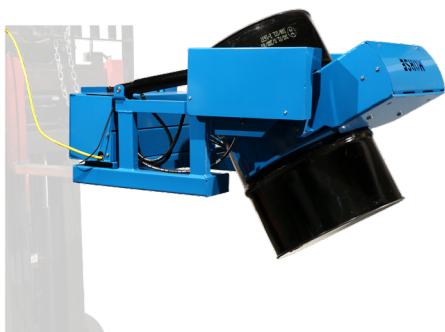


FORKLIFT DRUM HANDLERS

Enhance Your Forklift's Capability For Safety, Precision and Versatility

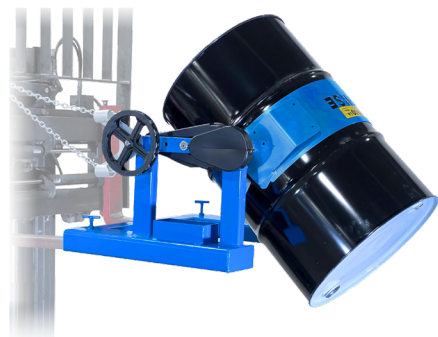
Forklift-mounted drum handling solutions for safe and efficient lifting, transporting, and positioning. Morse Forklift Drum Handlers address safety concerns by eliminating dangerous bare fork handling and improving workplace productivity.

- Attachments to lift, pour, and rack drum
- Safely transport upright or horizontal drum
- GRIP+GO Power-Grip allows lifting, pouring, and placing without leaving the forklift
- Options for drum pouring, upright transport, or horizontal racking
- Handle rimmed steel, plastic, or fiber drums



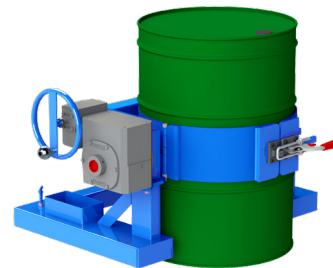
GRIP+GO Power-Grip Fork Mount Drum Handler

Power Grip and Tilt
Self-contained battery
Lift and pour right from forklift
14" to 24" (35.6 to 61 cm) diameter drum
Requires 25" (63.5") between forks
Capacity: 1500 Lb. (680 kg)



Forklift Attachments to Lift and Pour Drum

Available in 3 drum holder styles
- MORCINCH
- Three-piece drum holder
- Two web straps with ratchets
Power or manual tilt
Capacity: 2500 Lb. (1134 kg) drum



MOR SPEED Series Forklift Drum Grippers

Grab, lift, move and place drums without the operator leaving the driver's seat
Mounts on forks in seconds without tools
Does not require any modification to your truck
Contoured steel jaws securely grasp drum's upper rim





BELOW-HOOK DRUM HANDLERS

Lift, Move or Pour Drums with Precision using a Hoist or Crane

Morse Below-Hook Drum Handlers combine safety, reliability, and versatility to meet your drum handling needs.

- Independently load-tested to ASME B30.20 standards
- Certificate of load testing included with every unit
- Models for lifting and pouring or moving upright drums
- Power-tilt options with AC or air-powered drum tilt control
- Heavy-duty models for drums up to 2500 Lb. (1134 kg)
- Manual pull chain or hand tilt options for precise control



Power-Tilt Kontrol-Karriers

Lift, rotate and pour a heavy drum with hoist and crane
 Motorized drum rotation 360° in both directions
 AC Power Tilt models have 2-button pendant on 7 foot cord (2.1 m cord)
 Air Power Tilt models have control valve on 6 foot (183 cm) hose
 Capacity: 1500 Lb. (680 kg)



Kontrol-Karriers to Lift & Pour Drum Overhead

Pull Chain Kontrol-Karriers to Lift and Pour Drum Overhead
 Geared 360° controlled drum rotation in either direction
 Install MORCINCH options to handle other drum types and sizes
 Lift and invert drum with faucet or valve in place



Drum Karriers to Lift and Pour Within Reach

Grasp drum by hand to turn drum 360° in either direction
 Lock drum upright to transport, at horizontal position to pour
 Release tilt locks for hand-controlled tilt
 Capacity: 800 Lb. (363 kg) full drum
 500 Lb. (227 kg) half-full drum



Drum Lifters - Barrel Lifters

86 Series Drum Lifters have Under-Drum Support
 90 Series with Remote Grip and Release
 Model 91 Narrow Profile Steel Drum Lifter
 92 Series for Rimmed Steel, Plastic or Fiber Drum
 41 Series Drum Lifting Hooks lift a horizontal drum with your crane
 Model 42 Heavy-Duty Lifter

DRUM RACKERS & STACKERS

Safely Place and Retrieve Drums from Racks and Stacks

Morse Drum Rackers and Stackers eliminate the risks of dangerous bare fork drum handling, ensuring secure and efficient drum placement and retrieval for a variety of applications.

- Avoid hazards associated with improper drum handling techniques
- Rack drum horizontally for dispensing or stack them vertically for efficient storage
- Choose from battery, AC, or AIR power controls to streamline operations
- Spark-resistant models available for safe use in flammable environments



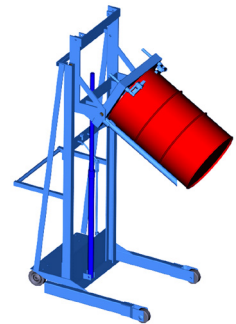
405 Series Omni-Lift Drum Rackers

Rack 72" (183 cm) high
Larger footprint than MORStak Rackers
Lifts drum in arc
Requires space between racked drums



611 & 620 Series MORStak Drum Rackers

Rack 56" or 102" (142 or 259 cm) high
Rack horizontally side-by-side
Move in tight spaces
6 Foot (183) turning radius
Tilt to place in rack in horizontal position



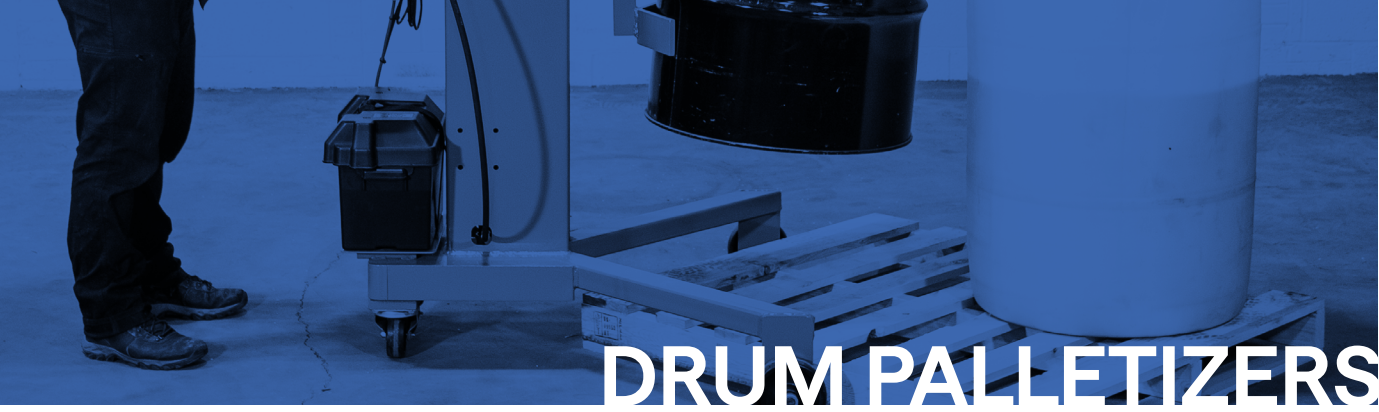
612 & 622 Series Drum Rackers

NO Tilt Function
Rack horizontally side-by-side
Move in tight spaces
6 Foot (183) turning radius



512 & 522 Series Drum Stackers

NO Tilt Function
Lift, move and stack a drum
Only handle rimmed drum
Move in tight spaces



DRUM PALLETIZERS

Ergonomic Solutions for Palletizing, Transporting and Pouring

Morse Drum Palletizers simplify moving drums onto and off pallets, spill containment pallets, or dollies while reducing manual effort and improving workplace safety.

- Handle rimmed 55-gallon (210 liter) steel, plastic, or fiber drums
- Models with integrated scales for weighing drum during handling
- Options for power lift (Air, AC, or DC) or manual hand pump lift
- Tilt and pour capabilities with hand crank or manual drum rotation
- Palletize drums up to 26" (66 cm) high, with options for pouring



Palletize Upright Drum 825H, 82H & 81 Series

RIMMED steel, plastic or fiber drum
 Raise drum 19" (483 cm)
 Scale-Equipped option available
 Drum Spotter Manual Palletizer
 Capacity: 800 Lb. (363 kg) 81 Series, 825H Series
 1000 Lb. (454 kg) 82H



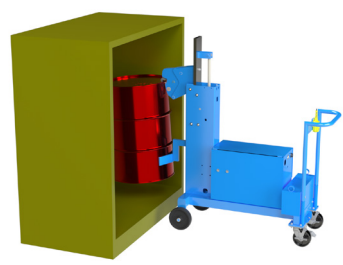
Palletize and Pour Drum 82A-GT & 82A Series

Pour 26" (66 cm) high
 Hand Pump Manual Drum Lift
 Grasp Drum and Tilt by Hand - Use Tilt Locks to hold drum horizontal
 - GT Models have Hand Crank Geared Tilt Control
 Capacity: 600 Lb. (272 kg)



MORREACH 82H-XR Series

Optimized for cabinet loading and drum palletizing
 Suitable for rimmed steel, plastic, and fiber drum
 Holds drum 4" (10 cm) beyond front wheels
 Raises 55-gallon drum up to 20" (51 cm)
 Integrated safety features
 Capacity: 600 lbs. (272 kg)





DRUM TRUCKS/DOLLIES/CRADLES

Transport, Dispense or Reposition Drums Safely and Efficiently

Efficient and ergonomic solutions for moving, positioning, and dispensing drums of various sizes. These tools ensure drum-handling safety and simplify tasks in manufacturing, warehousing, and industrial settings.

- Move, position and dispense a variety of drum sizes, including steel, plastic or fiber drums
- Features like wide stances, secure grips, and hands-free operation to reduce strain and risk of injury
- Heavy-duty materials, including all-steel frames and polyolefin wheels stand up to any job
- Ergonomic long handles, curved toes, and smooth rolling wheels ensure effortless maneuverability
- Spark-resistant and stainless-steel models available for specific operational needs



Drum Trucks

4-Wheel Drum Trucks:
Move, palletize, and pour drums effortlessly
For 30-85 gallon steel, plastic, or fiber drums
Capacity: Up to 1,000 lbs (454 kg)

2 & 3 Wheel Drum Trucks:
Simplified drum movement and positioning
Includes No-Spill Drum Truck and 5-Gallon PailPRO Truck



Drum Dollies

Round or Square Drum Dollies
Ideal for steel, plastic, or fiber drums
Wide stance for stability and easy movement
Steel, spark-resistant and stainless-steel models
Clamp+GO Dolly Handle attaches to round dolly, easily disengage. Enhances maneuverability



Drum Cradles

Move, position, and dispense drums
Also known as Drum Cradle Trucks, Tilting Drum Stands or Drum Carts
Steel and Stainless steel models available

Use Model 32 Drum Upender provides leverage to raise a horizontal drum to upright position

**Not designed for lowering drums from upright to horizontal*



5-GALLON PAIL HANDLERS

PailPRO Dependable Solutions For Your 5-Gallon Pail Needs

Morse PailPRO Series offers specialized equipment to lift, move, pour, and mix 5-gallon (20 liter) pails and cans. Choose from a variety of models to meet your specific needs, from transporting and dispensing to tumbling and heating.



Pail Trucks

Simplifies lifting and transporting heavy 5-gallon pails or cans.

Example: Model 152-5
A two-wheel PailPRO ergonomic truck for efficient and safe handling.



Mobile Pail Handlers

Simplifies lifting and transporting heavy 5-gallon pails or cans.

Example: Model 83-XR
An Extended Reach Mobile 5-Gallon (20L) Pail Handler with hand crank pail lift and hand wheel pail tilt.



Can Tumblers

Mix contents inside sealed 1 to 5-gallon pails without opening.

Example: Model 1-305-1
Single Can Tumbler for blending ingredients in a secure and efficient manner.



Can Tippers

Provides leverage to tilt and pour pails or cans manually.

Example: Model 15 Can Tipper
Ergonomically designed for controlled dispensing.



Below-Hook Pail Carriers

Allows hoist lifting and pouring of 5-gallon pails or cans.

Example: Model 85-5
PailPRO Below-Hook Pail-Karrier for lifting and pouring with precision.



Below-Hook Pail Lifters

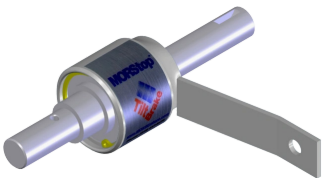
Enables hoist attachment to lift and transport pails securely.

Example: Model 92-5
PailPRO Below-Hook Pail Lifter for efficient vertical lifting.

ACCESSORIES, OPTIONS & KITS

Enhance The Safety, Efficiency and Functionality of Your Operations

Morse Accessories, Options & Kits are tailored to elevate your drum handling experience with enhanced safety, precision, and versatility.



Tilt-Brake Systems

MORStop Tilt-Brake holds drum tilt position automatically, preventing uncontrolled movement even when contents shift.

MORSTOP
TILTBRAKE

Available factory-installed or as a kit for retrofitting existing equipment.



Drum Cones

Drum cones control the flow of dry materials, reduce dust, and extend pouring reach.

Select the correct drum cone size and use a clamp collar for secure attachment. Add slide gates or iris valves to start and stop dispensing as needed.



Drum Faucets

Drum spigots fit standard 2" and 3/4" bungs, allowing flow control for various liquids.

Select plastic or iron "Molasses Gate" based on the liquid you are dispensing.



Drum Wrenches

MORplug Drum Wrenches feature multiple shapes to fit virtually any drum bung plug and generous length for extra hand clearance and effortless operation.

Available in powder coated standard steel or spark-resistant.



Drum Pumps

Double-action piston pumps deliver liquid on both forward and back strokes.

For liquids up to 80°F (26°C) with viscosities as thick as 30-weight motor oil.



Drum Heaters

Electric drum heater bands warm contents quickly with adjustable temperature control.

Moisture and chemical-resistant bands conform to drum curvature.



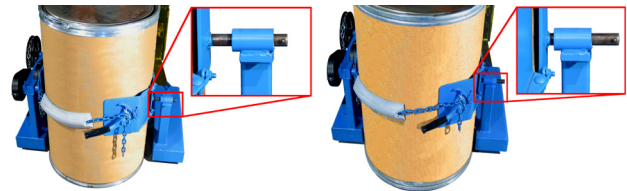
Versatile and Safe Drum Handling for Various Drum Types

The MORCINCH Drum Handling System provides a reliable solution for handling a wide range of drum types, including plastic, fiber, and smaller drums. Engineered to enhance safety and efficiency, the system adapts to different drum sizes and styles, ensuring secure handling in industrial applications.

Key Features

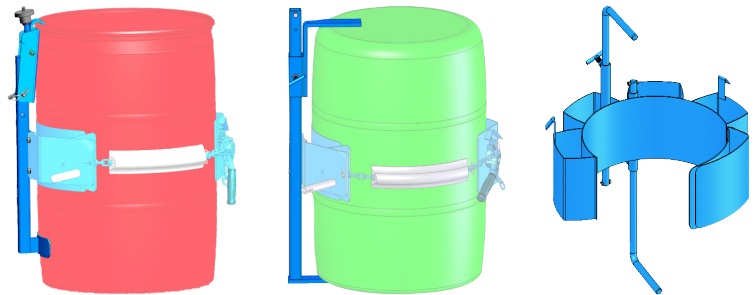
Universal Compatibility:

- Automatically adjusts for drum diameters ranging from 22" to 23.5" (55 to 59.7 cm)
- Compatible with steel, plastic, fiber, and smaller drums with appropriate adapters



Enhanced Safety for Flexible Drums:

- Top Rim Clamp Kit: Secures RIMMED plastic drums to prevent slippage
- Bracket Kit: Ensures safe handling of RIMLESS plastic drums
- Diameter Adapters: Allow safe handling of smaller-sized drums
- Prevents lengthwise slipping of flexible plastic or fiber drums, which lack the structural ribs of steel drums



Benefits

Efficiency:

- Enables one drum handler to manage various drum types with minimal setup changes

Safety:

- Prevents accidents caused by drum instability or slippage

Adaptability:

- Provides the tools necessary to securely handle non-standard drum materials and sizes



The MORCINCH Drum Handling System is the key to safer and more versatile drum handling, making it an essential addition to any industrial drum-handling equipment.