

Kattsafe Height access
and fall protection



INTERNAL WALL MOUNT GUARDRAIL

GR31



PRODUCT OVERVIEW



The GR31 Internal Wall Mount Guardrail provides the highest level of passive safety for internal wall mounted applications. GR31 posts are positioned a maximum of 8ft on center. This system is sold in kit form to ensure all components are included for a seamless installation. Roof guardrail systems can be purchased by simply selecting the kit length(s) required, the number of corner kits, wall termination kits and ladder connection hardware kits. GR31 guardrail is simple and quick to install. This system can be easily customized on-site to suit specific site requirements.

Features

- Manufactured of high tensile aluminum
- Modular system facilitates infinite configurations
- Can be easily customized on site to suit application
- Lightweight for easy handling

TECHNICAL SPECIFICATION

Stocked colors

Mill finish, safety yellow

Custom colors

Inquire about custom colors

OSHA compliance

OSHA 1926.501(b), 1910.28(b)

Max. spacing between posts

8ft

METAL ROOF MOUNT GUARDRAIL

GR32



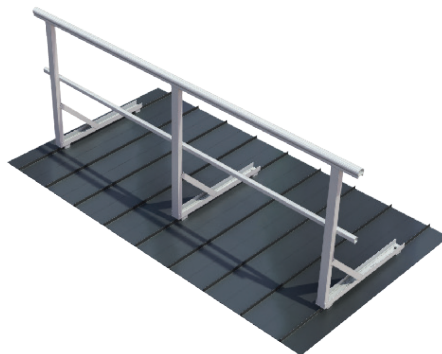
PRODUCT OVERVIEW



GR32 Metal Roof Mount Guardrail is designed for metal roofs including R panel and standing seam systems. The GR32 system can either be fastened down with self-sealing rivets to the metal deck or with non-penetrating clamps to suit the standing seam profile. Roof guardrail systems can be purchased by simply selecting the kit length(s) required, the number of corner kits, wall termination kits and ladder connection hardware kits. GR32 guardrail is simple and quick to install.

Features

- Manufactured of high tensile aluminum
- Modular system facilitates infinite configurations
- Can be easily customized on site to suit application
- OSHA compliant



TECHNICAL SPECIFICATION

Material and dimensions

- Top rail: 2in aluminum profiled tube - 6005-T5. 0.75lbs/ft
- Mid rail: 1-5/8in aluminum profiled tube - 6005-T5. 0.40lbs/ft
- Splice joins: profiled aluminum tube
- Post: 2-1/4 x 1-1/2 x 1/8in Aluminum Rectangular Tube 6005-T5 - 40in; 2-1/2 x 1-1/2 x 1/8in Aluminum Channel 6005-T5 - 31.5in; 2-1/2 x 1-1/2 x 1/8in Aluminum Channel 6005-T5 - 18in
- Post mounting: standing seam clamps or rivets
- Toe board: 4-1/4 x 1 x 3/32in Aluminum Channel - 6005-T5. 0.70lbs/ft
- Hardware: all stainless steel
- Corner elbows: die cast aluminum. Top rail corner - 0.8lbs. Mid rail corner - 0.42lbs
- End caps: plastic caps

Finish

All aluminum sections are supplied mill finish as standard. Safety Yellow option in stock. Custom colors are available

Layout and installation

- Railing height to be 42in (-/+ 3in per OSHA) when installed correctly. Distance between top rail and mid rail cannot exceed 19in
- Post spacing is a maximum of 8ft
- GR32 guardrail posts are secured to the roof substrate with standing seam clamps or rivets. Project-specific data is required to determine the correct type of fastener and number needed to secure each post. An ANSI/SPRI FX-1 Pull Test is recommended to measure the pull-out resistance of fasteners included in the load path

Compliance

The GR32 modular guardrail system is designed and manufactured to meet and exceed OSHA and ANSI regulations as applicable.

Product warranty

5 years from date of installation, subject to correct installation, use, and maintenance in accordance with manufacturer's specifications and recommendations. Extended warranty is available on a per project basis.

EXTERNAL WALL MOUNT GUARDRAIL

GR33



PRODUCT OVERVIEW



The GR33 External Wall Mount Guardrail provides the highest level of passive safety for external wall mounted applications. GR33 posts are positioned a maximum of 8ft on center. This system is sold in kit form to ensure all components are included for a seamless installation. Roof guardrail systems can be purchased by simply selecting the kit length(s) required, the number of corner kits, wall termination kits and ladder connection hardware kits. GR33 guardrail is simple and quick to install. This system can be easily customized on-site to suit specific site requirements.

Features

- Manufactured of high tensile aluminum
- Modular system facilitates infinite configurations
- Can be easily customized on site to suit application
- Lightweight for easy handling

TECHNICAL SPECIFICATION

Stocked colors

Mill finish, safety yellow

Custom colors

Inquire about custom colors

OSHA compliance

OSHA 1926.501(b), 1910.28(b)

Max. spacing between posts

8ft

Kattsafe[®] Height access
and fall protection

NON-PENETRATING GUARDRAIL

GR34



PRODUCT OVERVIEW



The GR34 Non-Penetrating Guardrail system provides the highest level of passive safety for membrane and built up roof systems. The GR34 guardrail features a plastic coated, steel weighted base that sits up top of the roofing membrane resulting in a completely freestanding system that is OSHA compliant. GR34 bases and posts are positioned a maximum 10ft on center. This system is sold in kit form to ensure all components are included for seamless installation. Roof guardrail systems can be purchased by simply selecting the kit length(s) required, the number of corner kits, return kits, wall termination kits and ladder connection hardware kits. GR34 guardrail is simple and quick to install. The system can be easily customized on-site to suit specific site requirements.

Features

- Manufactured of high tensile aluminum
- Modular system facilitates infinite configurations
- Can be easily customized on site to suit application
- OSHA compliant



TECHNICAL SPECIFICATION

Material and dimensions

- Top rail: 2in extruded 6005-T5 aluminum profiled tube. 0.75lbs/ft
- Mid rail: 1-5/8in extruded 6005-T5 aluminum profiled tube. 0.40lbs/ft
- Splice joints: profiled aluminum tube
- Post: 2-1/4 x 1-1/2 x 1/8in extruded 6005-T5 rectangular tube. 2.70lbs
- Toe board: 4-1/4 x 1 x 3/32in extruded 6005-T5 aluminum channel. 0.70lbs/ft
- Hardware: all stainless steel
- Corner elbows: die cast aluminum. Top rail corner - 0.8lbs. Mid rail corner - 0.42lbs
- End caps: plastic caps
- Roof protective pads: 24 x 24 x 5/32in recycled rubber

Finish

All aluminum sections are supplied mill finish as standard. Safety Yellow option in stock. Custom colors are available

Layout and installation

- Railing height to be 42in when installed correctly. Distance between top rail and mid rail cannot exceed 19in
- Post spacing is a maximum of 10ft. Please note that in certain states, the maximum is 8ft
- A 90 degree return kit is required at the start and stop of any GR34 free-standing guardrail system regardless of length. This is typically 5ft in length. This geometry ensures the system meets the loads required per OSHA.
- The GR.PAD.EPDM Roof Protective pad is required under every base where there is no parapet or small wall.
- Bases should be positioned a minimum of 2ft from the roof edge where there is no parapet or small wall.

Compliance

The GR34 modular guardrail system is designed and manufactured to meet and exceed OSHA and ANSI regulations as applicable.

Product warranty

5 years from date of installation, subject to correct installation use and maintenance in accordance with manufacturer's specifications and recommendations with the exception of the weighted bases which have a warranty of 2 years. Extended warranty is available on a per project basis.

Kattsafe® Height access
and fall protection

SURFACE MOUNT GUARDRAIL

GR36



PRODUCT OVERVIEW



The GR36 Surface Mount Guardrail is designed for sloped roof projects and application where higher wind loads, ice build-up, and snow loads are typical. The GR36 system can be fastened down with the Kattsafe Anchor System. The Anchor is supplied with project specific roof membrane pre-attached to ensure a waterproof connection and maintain the warranty. The Anchor is approved by all major manufacturers. This system can be easily customized on-site to suite specific site requirements.

Features

- Manufactured of high tensile aluminum
- Modular system facilitates infinite configurations
- Can be easily customized on site to suit application
- Lightweight for easy handling

IMPORTANT NOTE:

The surface attachment method (formerly referred to as KATTPPOINTS) will require a certified installer for the final waterproofing (heat welding/ adhering of roof membrane).

TECHNICAL SPECIFICATION

Stocked colors

Mill finish, safety yellow

Custom colors

Inquire about custom colors

OSHA compliance

OSHA 1926.501(b), 1910.28(b)

Max. spacing between posts

10ft

NON-PENETRATING GUARDRAIL

GR37



PRODUCT OVERVIEW



OSHA, CalOSHA
& ANSI compliant



In stock &
ready to ship



No drilling



Modular
components



Aluminum
manufacturing



5 year
market leading
warranty



Made in the
USA

The GR37 Non-Penetrating Guardrail system provides top-tier passive safety for membrane and built-up roof systems. Its stackable base design supports endless configurations, offering flexibility and ease of use. The 54lb bases and T-bolt fastening method ensure quicker setup as well as safer easier handling in the field.

Featuring a slotted post extrusion for enhanced durability, the vertical post is fixed at a 10-degree angle, making it less visible from the ground and blending seamlessly with the building facade. The GR37 system can also be powder-coated to match the building's aesthetics. Available in ballasted or cantilevered setups, the GR37 complies with OSHA, ANSI, and Cal OSHA standards.

Sold in kit form, the GR37 includes all necessary components for a seamless installation. Made in the USA, the GR37 exceeds testing requirements, ensuring safety, reliability, and a rust-free, aesthetically pleasing appearance.

Features

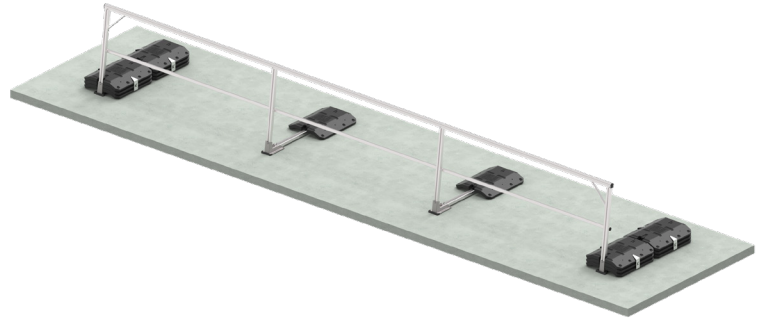
- Made from high strength aluminum
- Cast foot is fixed at a 10 degree angle, ensuring max aesthetics
- Stackable base design for endless configurations
- New end kit eliminates need for a return kit
- Base clips allow for less hardware and a faster and simpler install
- Ballasted or cantilevered setup
- OSHA, ANSI, & Cal OSHA compliant
- 5-year warranty
- 1-3 day lead time
- Flatpack shipping
- Made in the USA

CONFIGURATION OPTIONS

GR37.INT.CW Intermediate with Counterweight

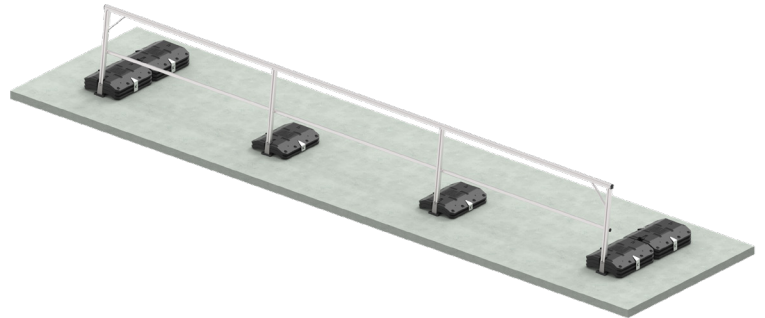
(1) base on counterweight set-up

NOTE: This is our standard configuration and will be supplied unless otherwise specified.



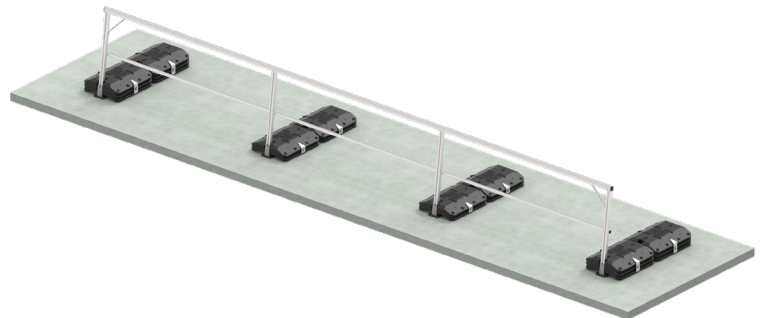
GR37.INT.IN In-line Intermediate

(2) bases mounted directly below the post



GR37.INT.HL Intermediate for any high load application

20lbs/ft. (4) bases



COMPONENTS

Weighted base



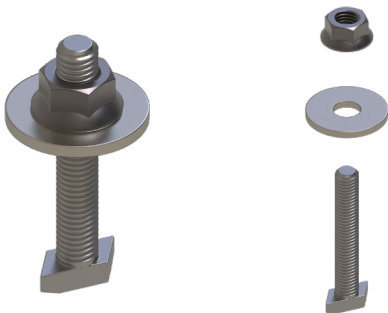
End post



Base foot



T-bolt



Intermediate counterweight



Base clips



TECHNICAL SPECIFICATION

Material and dimensions

- Top rail: 2in extruded 6000 series aluminum profiled tube. 0.75lbs/ft
- Mid rail: 1-5/8in extruded 6000 series aluminum profiled tube. 0.40lbs/ft
- Splice joins: profiled aluminum tube
- Post: 2-1/4 x 1-1/2 x 1/8in extruded 6000 series rectangular tube. 2.70lbs
- Toe board: 4-1/4 x 1 x 3/32in extruded 6000 series aluminum channel. 0.70lbs/ft
- Hardware: all stainless steel
- Corner elbows: die cast aluminum. Top rail corner - 0.8lbs. Mid rail corner - 0.42lbs
- End caps: plastic caps

Finish

All aluminum sections are supplied mill finish as standard. Safety Yellow option in stock. Custom colors are available

Layout and installation

- Railing height to be 42in when installed correctly. Distance between top rail and mid rail cannot exceed 19in
- Post spacing is a maximum of 8ft.
- GR37.END kit is required at the start and stop of any GR37 free-standing guardrail system regardless of length.
- Bases should be positioned a minimum of 2ft from the roof edge where there is no parapet or small wall.

Compliance

The GR37 modular guardrail system is designed and manufactured to meet and exceed OSHA, CAL-OSHA, and ANSI regulations as applicable.

Product warranty

5 years from date of installation, subject to correct installation use and maintenance in accordance with manufacturer's specifications and recommendations with the exception of the weighted bases which have a warranty of 2 years. Extended warranty is available on a per project basis.