

Kattsafe[®] Height access
and fall protection



ALUMINUM WALKWAY SYSTEMS

GW



PRODUCT OVERVIEW



Kattsafe aluminum walkway systems are built for safety and flexibility. It uses high-tensile-strength aluminum that's both lightweight and durable, making it long-lasting and easy to install. We supply walkway systems in various lengths, and we cut the panels to length and angle on-site according to your rooftop's size and shape.

Fasteners are also selected according to the roof at hand. Metal roof panels usually use specialist rivets with walkway battens, and standing seam roof profiles typically use non-penetrating clamps. The non-penetrating walkway system is suited for membrane and built-up roof systems.

Features

- Manufactured of high tensile aluminum
- Modular system facilitates infinite configurations
- Can be easily customized on site to suit application
- Provides a controlled access pathway for workers on roofs
- Can be mounted to standing seam roofs with clamps or to R panel roof systems with rivets
- Can be mounted on membrane and built-up roof systems with

AVAILABLE CONFIGURATIONS



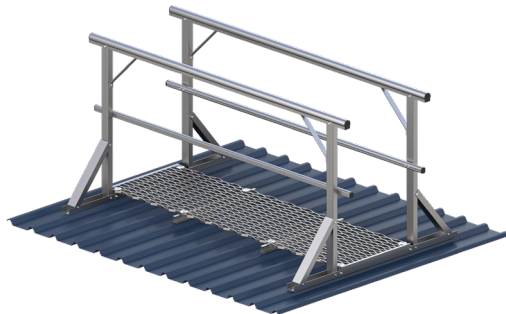
GW4

Aluminum walkway with one-sided guardrail



GW5

Aluminum walkway with one-sided guardrail leveled



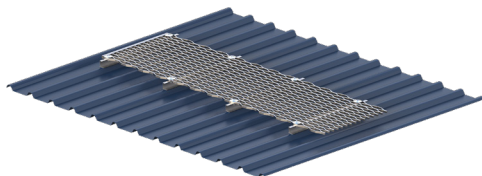
GW6

Aluminum walkway with two guardrails



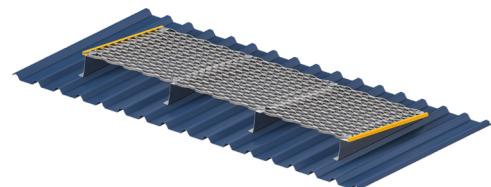
GW7

Aluminum walkway with two guardrails leveled



GW8

Aluminum walkway without guardrail



GW9

Aluminum walkway without guardrail leveled

TECHNICAL SPECIFICATION

Walkway material and dimensions

- Surface mesh: aluminum walkway grating. 1/2in (13mm) thick mesh, aluminum 6063-T4
- Walkway mounting disk: 2-1/8in x 1/8in
- Walkway joiner bar: 5/8in x 1-3/4in aluminum 6005-T5
- Walkway c-channel supports: 1-1/2in x 1-1/2in aluminum 6106T6

Guardrail material and dimensions

- Top rail: 2in extruded 6005-T5 aluminum profiled tube. 0.75lbs/ft
- Mid rail: 1-5/8in extruded 6005-T5 aluminum profiled tube. 0.40lbs/ft
- Splice joins: profiled aluminum tube
- Post: 2-1/4 x 1-1/2 x 1/8in extruded 6005-T5 rectangular tube. 2.70lbs
- Toe board: 4-1/4 x 1 x 3/32in extruded 6005-T5 aluminum channel. 0.70lbs/ft
- Hardware: all stainless steel
- Corner elbows: die cast aluminum. Top rail corner - 0.8lbs. Mid rail corner - 0.42lbs
- End caps: plastic caps

Finish

All aluminum sections are supplied mill finish as standard. Safety Yellow option in stock. Custom colors are available

Capacity

Unit shall support 60psf / 300lb point load as standard

Inspection and maintenance

Inspection required every 12 months or after any incident by a competent person in accordance with manufacturer's specifications

Compliance

The aluminum walkway systems are designed and manufactured to meet and exceed OSHA and ANSI regulations as applicable

Product warranty

5 years from date of purchase subject to correct configuration and installation. Use and maintenance to be in accordance with manufacturer's specifications and recommendations

Kattsafe[®] Height access
and fall protection

FLEXIBLE WALKWAY

PVC



PRODUCT OVERVIEW



Kattsafe Flexible Walkway PVC is a two-layer roof walkway matting for safety and comfort underfoot. A highly specialized walkway matting for flat roofs, gantries and high level walkways, PVC is certified slip resistant and able to withstand all types of weather. Made from flexible PVC, it's designed to be loose laid with no fixing required, so can be installed quickly and easily, even in adverse weather conditions. The durable, two-layer construction contours to the roof structure and protects the membrane, while the diamond-cut pattern and cross-directional top ribs ensure a firm underfoot grip. It remains stable in winds up to 60mph/hr (96km).

Features

- Diamond-cut pattern
- Two-layer construction
- Flexible, one-piece construction
- Loose lay, no fixing required
- Supplied in 33' (10m) rolls

Colors

-  Light Gray
-  Black
-  White
-  Yellow

More colors available upon request

TECHNICAL SPECIFICATION

Standard sizes

- Height: 9/16in (14mm)
- Standard roll options: 33ft x 2ft (10 x 0.6m) | 33ft x 3ft 6in (10 x 0.91m) | 33ft x 4ft (10 x 1.22m)
- Weight: 1.3lbs/sq. ft (6.6kg/m²)

Tolerances

- Height (+/- 0.05in): 9/16in (14mm)
- Length (0+1 ft): 33ft
- Width (+/- 1/2in): 2ft 3ft 4ft

Technical information

- Acoustic: Excellent sound absorption
- Composition: Resistant to most acids, alkalines and oils. You can read more about specific chemical resistances by downloading this information sheet
- Drainage: DIN 51130: V10
- Environment: PVC is 100% recyclable. When manufactured in black, it's made using our post industrial recycled material. The recycled content averages at least 30%, but we strive for 100% wherever possible. We don't use any substances included in the SVHC list under REACH in any of our matting products.
- Flammability: UL 94 HB Self Extinguished (material ignited but stopped burning prior to reaching the timing zone) / No Burn Rate. UL 214 did not ignite
- Hygiene: Made from non-porous PVC that's naturally resistant to bacteria growth
- Reversion: Thermoplastic shrinkage can result in size reductions up to 2%. This may be accelerated in hot environments. You can read more about the causes of shrinkage by downloading this information sheet
- Slip resistance: ASTM F 1677 - Dry/Wet: 1.0/0.9 | DIN 51130: R10
- Thermal: Designed to function at temperatures from -9°F and up to +140°F. Slight size variation may occur at temperature extremes.
- UV light: Resistant to PVC degradation
- Wind resistance: PVC remains stable in winds up to 60mph (96km/h). Tests at PRI Construction Materials Technologies LLC in Florida showed PVC when laid flat on a stable platform remained in position for wind speeds of 125mph (200 km/h).
- Warranty: Five years. Visit our policies page for more information about warranties

TECHNICAL SPECIFICATION CONTINUED

Benefits

- Certified slip resistance (DIN) 51130: R10; ASTM 1677: 1.0/0.9)
- Excellent drainage (DIN 51130: V10)
- Contours to roof structure and protects the membrane
- Stable in winds up to 60mph/hr (96km)
- Quick to install

Installation

- Installation is simple
- Loose lay, no fixing required
- Durable, one-piece construction
- Supplied in 33' rolls; simply cut to fit on site
- Contours to the roof structure

Cleaning

- Simply lift or roll to clean
- Easy to clean with a high pressure hose

Kattsafe Height access
and fall protection

FLEXIBLE WALKWAY

TPO



PRODUCT OVERVIEW



Kattsafe Flexible Walkway TPO is a highly specialized walkway matting compatible with TPO and EPDM roof membranes. TPO has been specifically created to protect flat roofs from heavy foot traffic, dropped tools and maintenance equipment.

Made from flexible TPO, it's designed to be loose laid with no fixing required, so can be installed quickly and easily, even in adverse weather conditions. The durable, welded construction contours to the roof structure, effectively protecting the membrane from any potential damage. The embossed surface ensures a firm underfoot grip, providing safe access for staff and maintenance workers. It remains stable in winds up to 55mph/h (89km).

Features

- Embossed surface
- Two-layer construction
- Durable, welded construction
- Loose lay, no fixing required
- Made from flexible TPO

Colors

-  Light Gray
-  White
-  Yellow

More colors available upon request

TECHNICAL SPECIFICATION

Standard sizes

- Height: 1/2in (12mm)
- Standard roll options: 33ft x 2ft (10 x 0.6m) | 33ft x 2ft 6in (10 x 0.75m) | 33ft x 3ft (10 x 0.9m)
- Weight: 1.1lbs/sq. ft (5.2kg/m²)

Tolerances

- Height (+/- 0.05in): 1/2in (12mm)
- Length (0+1 ft): 33ft
- Width (+/- 1/2in): 2ft 2ft6in 4ft

Technical information

- Acoustic: Excellent sound absorption
- Composition: Thermoplastic polyolefin
- Drainage: DIN 51130: V10
- Environment: Flexible Walkway TPO is 100% recyclable. We don't use any substances included in the SVHC list under REACH in any of our matting products.
- Flammability: UL 94 HB Self Extinguished (material ignited but stopped burning prior to reaching the timing zone) / No Burn Rate. UL 214 did not ignite
- Slip resistance: DIN 51130: R9 | ASTM 1677: 1.1/0.9
- Wind resistance: When loose laid, Flexible Walkway TPO can withstand winds up to 55mph (89 km/h). In laboratory conditions, on a flat stable platform at The University Of Hertfordshire, School of Aerospace, Automotive & Design Engineering, TPO remained stable in wind speeds up to 88mph (142 km/h).
- Warranty: Four years. Visit our policies page for more information about warranties

Benefits

- Certified slip resistance (DIN) 51130: R10; ASTM 1677: 1.0/0.9)
- Excellent drainage (DIN 51130: V10)
- Contours to roof structure and protects the membrane
- Stable in winds up to 60mph/hr (96km)
- Quick to install

Installation

- Installation is simple
- Loose lay, no fixing required
- Durable, one-piece construction
- Supplied in 33' rolls; simply cut to fit on site
- Contours to the roof structure

Cleaning

- Simply lift or roll to clean
- Easy to clean with a high pressure hose